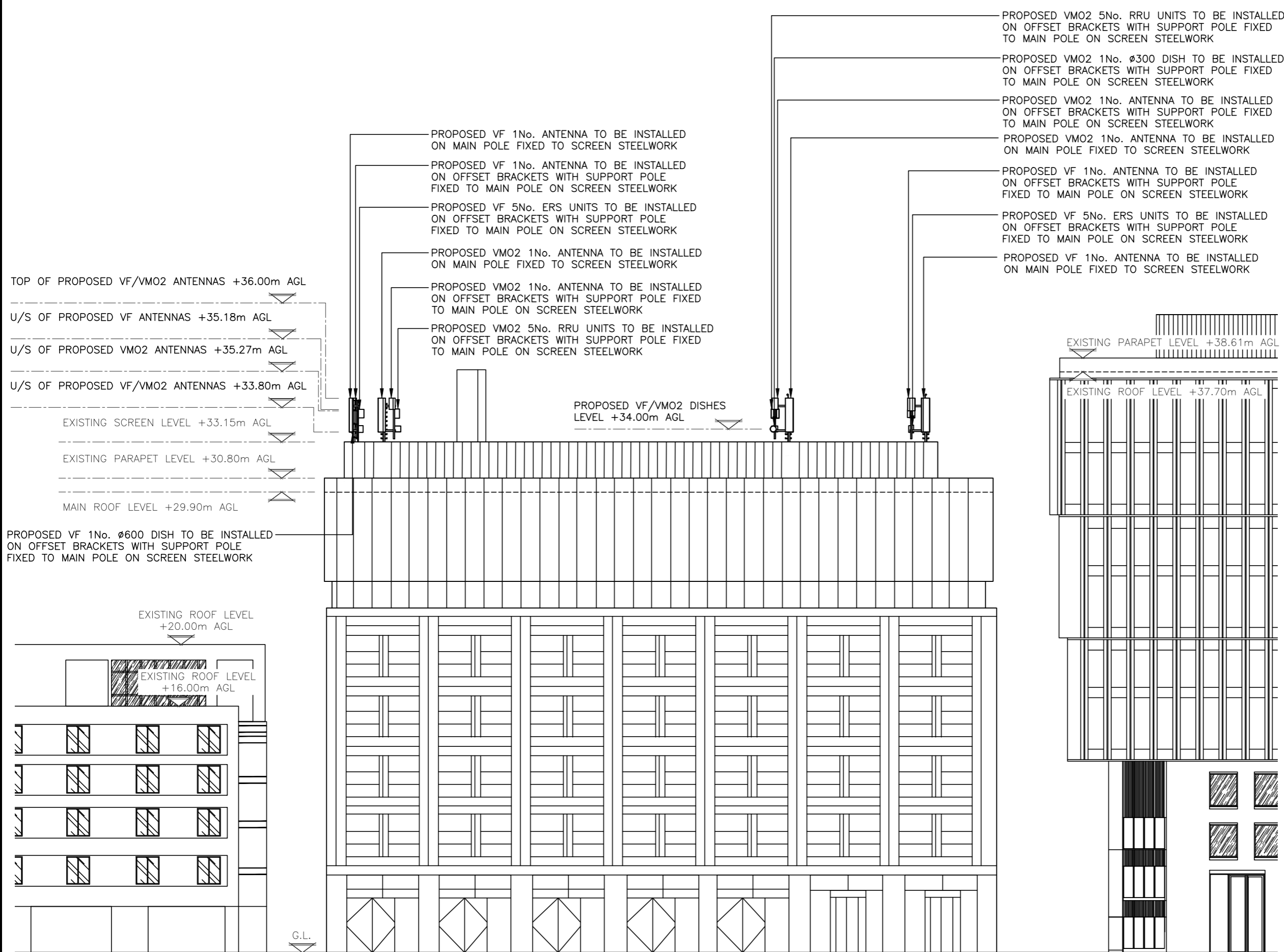


ALL DIMENSIONS ARE IN mm UNLESS NOTED OTHERWISE

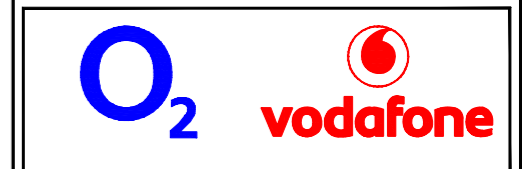
N.G.R E: 529574 N: 183820

NOTES:



- PROPOSED VMO2 5No. RRU UNITS TO BE INSTALLED ON OFFSET BRACKETS WITH SUPPORT POLE FIXED TO MAIN POLE ON SCREEN STEELWORK
- PROPOSED VMO2 1No. Ø300 DISH TO BE INSTALLED ON OFFSET BRACKETS WITH SUPPORT POLE FIXED TO MAIN POLE ON SCREEN STEELWORK
- PROPOSED VMO2 1No. ANTENNA TO BE INSTALLED ON OFFSET BRACKETS WITH SUPPORT POLE FIXED TO MAIN POLE ON SCREEN STEELWORK
- PROPOSED VMO2 1No. ANTENNA TO BE INSTALLED ON MAIN POLE FIXED TO SCREEN STEELWORK
- PROPOSED VF 1No. ANTENNA TO BE INSTALLED ON OFFSET BRACKETS WITH SUPPORT POLE FIXED TO MAIN POLE ON SCREEN STEELWORK
- PROPOSED VF 5No. ERS UNITS TO BE INSTALLED ON OFFSET BRACKETS WITH SUPPORT POLE FIXED TO MAIN POLE ON SCREEN STEELWORK
- PROPOSED VF 1No. ANTENNA TO BE INSTALLED ON MAIN POLE FIXED TO SCREEN STEELWORK

B	Antenna Bearings & S2 Location Amended	MT	FD	24.08.23
A	Issued for Approval	ASE	FD	02.08.23
REV	MODIFICATION	BY	CH	DATE



Cell Name	Opt.
TRIBECA - THE APEX	A

Cell ID No		
CORNERSTONE	VF	VMO2
305482_00	20207	95827

Site Address / Contact Details
 2-6 ST PANCRAS WAY
 CAMDEN
 NW1 0TB

Drawing Title: PROPOSED SITE ELEVATION			
Purpose of issue: PLANNING			Dwg Rev: B
Drawing Number: 301			Pack Issue: D
Surveyed By: FD	Date: 24.08.23	Original Sheet Size: A3	Checked: FD
Drawn: MT	Date: 24.08.23	Checked: FD	Date: 24.08.23

These drawings comply with VF & VMO2 Standard ICNIRP guidelines, under configuration VM7F
 Designed in accordance with Cornerstone documents: SDN0007 & SDN0009 v6.0

PROPOSED SOUTH WEST ELEVATION
 (1:250)

