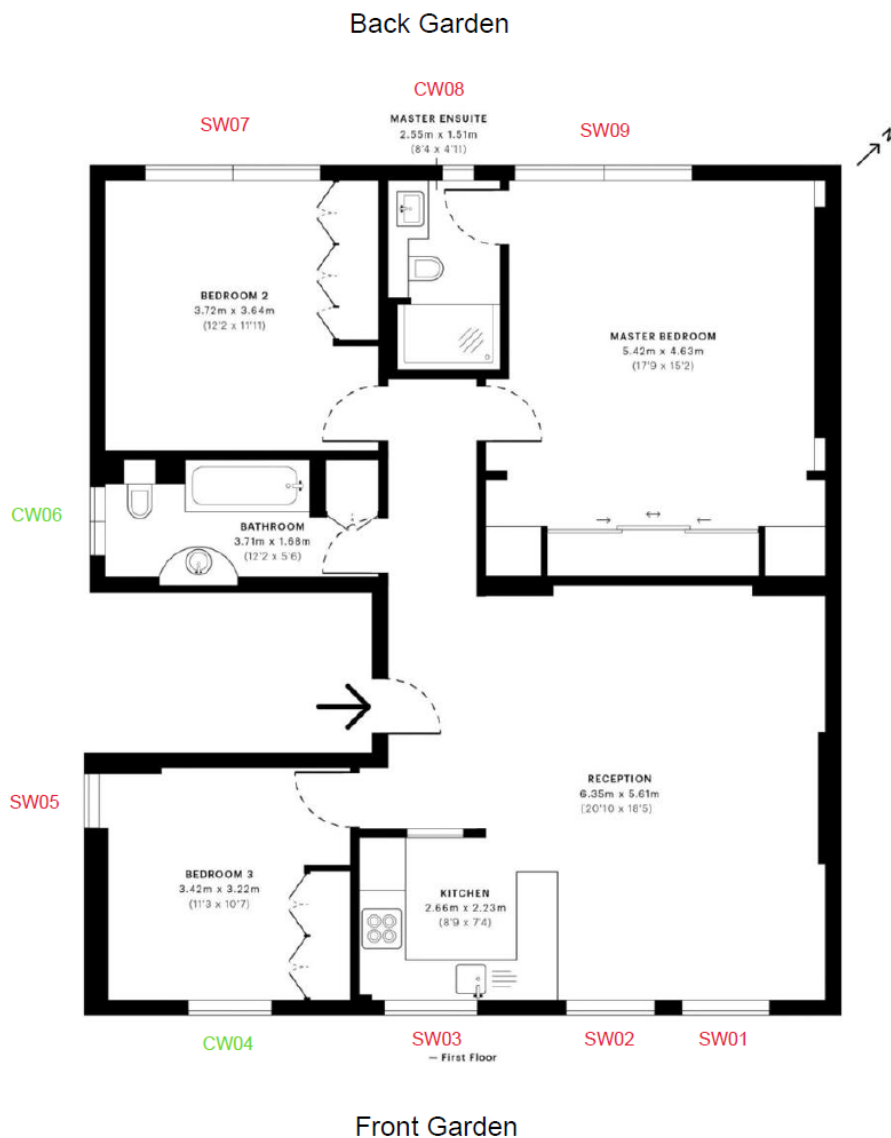


Window Replacement Application of Flat 2, 77 Aberdare Gardens

This application is to replace single to double glazing windows of the mid floor flat of 77 Aberdare Gardens in order to improve energy efficiency.

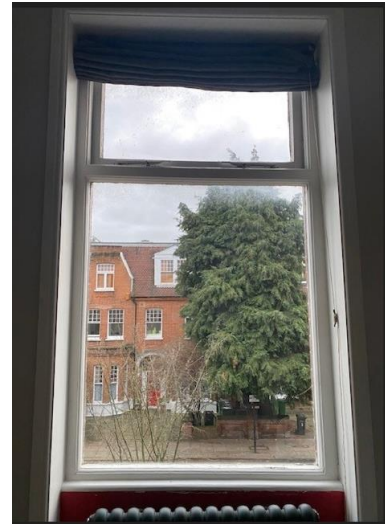
All 9 windows of the flat will be replaced with double-glazing windows with concealed trickle vents. All windows will use wood material and white colour.

Seven of them (Sash window 1-3, Sash window 5, Sash window 7, Case window 8, Sash window 9) will be replaced like for like. Two of them (Case window 4 and Case window 6) have proposed designs different from the existing windows.

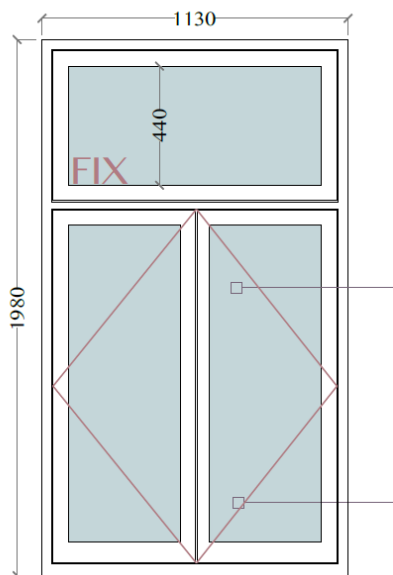


Window cw04

The existing case window on the lefthand side of the front elevation (cw04) has a fixed lower part and an openable upper part. The upper part is too high to reach, which makes it difficult to open and close without using a ladder.



The proposed design of this window has a fixed upper part and an openable lower part.



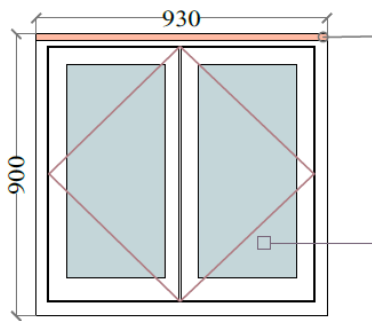
The proposed design will be the same as the windows in the same position of the neighbouring houses on the street (75, 79, 68, 70 Aberdare Gardens).

Window cw06

The existing bathroom case window (cw06) on the west side elevation has 3 sections.



The proposed design will have two sections side by side.



This window is almost invisible from any public path.