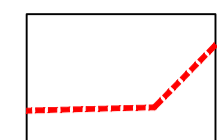
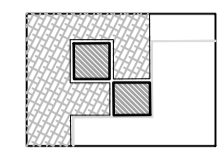
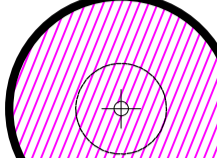
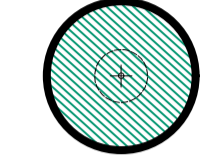


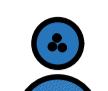


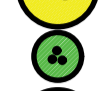




APPENDIX A: S4 Public Realm Soft Landscaping - SOFT LANDSCAPE GENERAL ARRANGEMENT & PLANTING PLANS

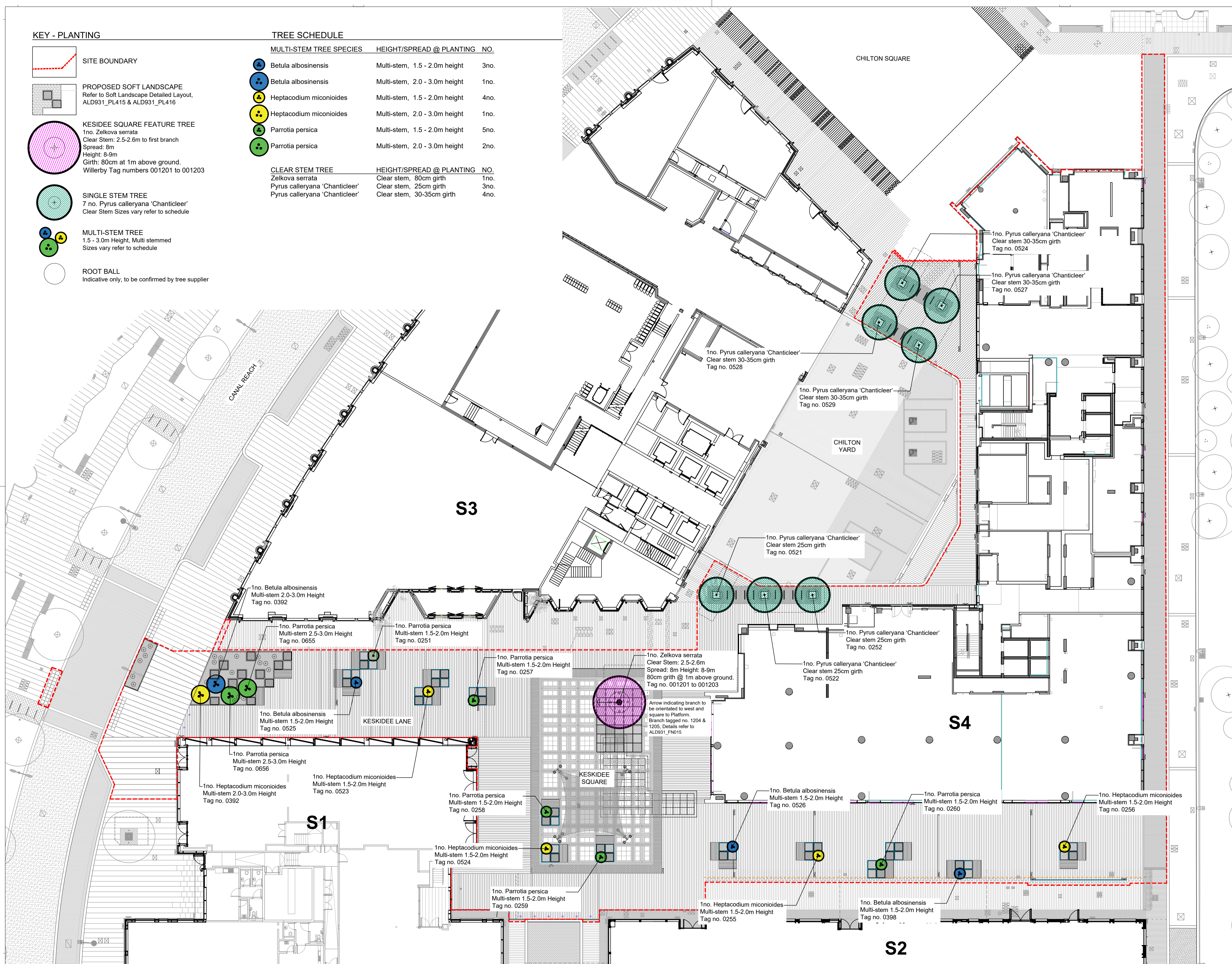
KEY - PLANTING

-  SITE BOUNDARY
-  PROPOSED SOFT LANDSCAPE
Refer to Soft Landscape Detailed Layout, ALD931_PL415 & ALD931_PL416
-  KESIDEE SQUARE FEATURE TREE
1no. Zelkova serrata
Clear Stem: 2.5-2.6m to first branch
Spread: 8m
Height: 8-9m
Girth: 80cm at 1m above ground.
Willerby Tag numbers 001201 to 001203
-  SINGLE STEM TREE
7 no. Pyrus calleryana 'Chanticleer'
Clear Stem Sizes vary refer to schedule
-  MULTI-STEM TREE
1.5 - 3.0m Height, Multi stemmed
Sizes vary refer to schedule
-  ROOT BALL
Indicative only, to be confirmed by tree supplier

TREE SCHEDULE

MULTI-STEM TREE SPECIES	HEIGHT/SPREAD @ PLANTING	NO.
 Betula albosinensis	Multi-stem, 1.5 - 2.0m height	3no.
 Betula albosinensis	Multi-stem, 2.0 - 3.0m height	1no.
 Heptacodium miconioides	Multi-stem, 1.5 - 2.0m height	4no.
 Heptacodium miconioides	Multi-stem, 2.0 - 3.0m height	1no.
 Parrotia persica	Multi-stem, 1.5 - 2.0m height	5no.
 Parrotia persica	Multi-stem, 2.0 - 3.0m height	2no.

CLEAR STEM TREE	HEIGHT/SPREAD @ PLANTING	NO.
Zelkova serrata	Clear stem, 80cm girth	1no.
Pyrus calleryana 'Chanticleer'	Clear stem, 25cm girth	3no.
Pyrus calleryana 'Chanticleer'	Clear stem, 30-35cm girth	4no.



All dimensions to be verified on site. Figured dimensions to take precedence to those scaled. Any areas indicated on this drawing are for guidance only, no responsibility is taken for their accuracy.
The drawing is the property of Applied Landscape Design Limited. Copyright is reserved by them and the drawing is issued on the condition that it is not copied, reproduced, retained or disclosed to any unauthorised person, either wholly or in part without the written consent in writing of Applied Landscapes.

© 2023 Applied Landscape Design Limited. All rights reserved.

CDM/H&S:
The works illustrated on this drawing have been reviewed against the Design CDM Risk Register and significant risks are noted as:
Construction:

- Handling heavy materials, kerbs, paving materials
- Working adjacent to highways, vehicular impact
- Working adjacent to existing structures, boundary walls and buildings
- Working in a 'live' site - pedestrian activity in close proximity
- Risk of noise, dust from cutting activities

 Maintenance:

- Working adjacent to highways, pedestrian areas, and in close proximity to residential areas

NOTES / KEY:

REFERENCE DRAWINGS/DOCUMENTS	
ALD931_MP010	General Arrangement
ALD931_PL415 & ALD931_PL416	Soft Landscape Detailed Layout

REVISIONS

no.	issued	drn	chkd	date
P01	ISSUE FOR PLANNING	XW	CW	22.12.23

CLIENT:

KCCGPL

LANDSCAPE ARCHITECT:
 **applied landscape design**
 Falcon House
 Telford Road, Bicester
 Oxfordshire, OX26 4LD
 Tel: 01869 249776
 Email: mail@appliedlandscape.co.uk

PROJECT:
**BUILDING S4 PUBLIC REALM
 KESKIDEE SQUARE, KXC**

DRAWING TITLE:
**KESKIDEE SQUARE PUBLIC REALM
 TREE PLANTING - PLANNING
 GENERAL ARRANGEMENT**

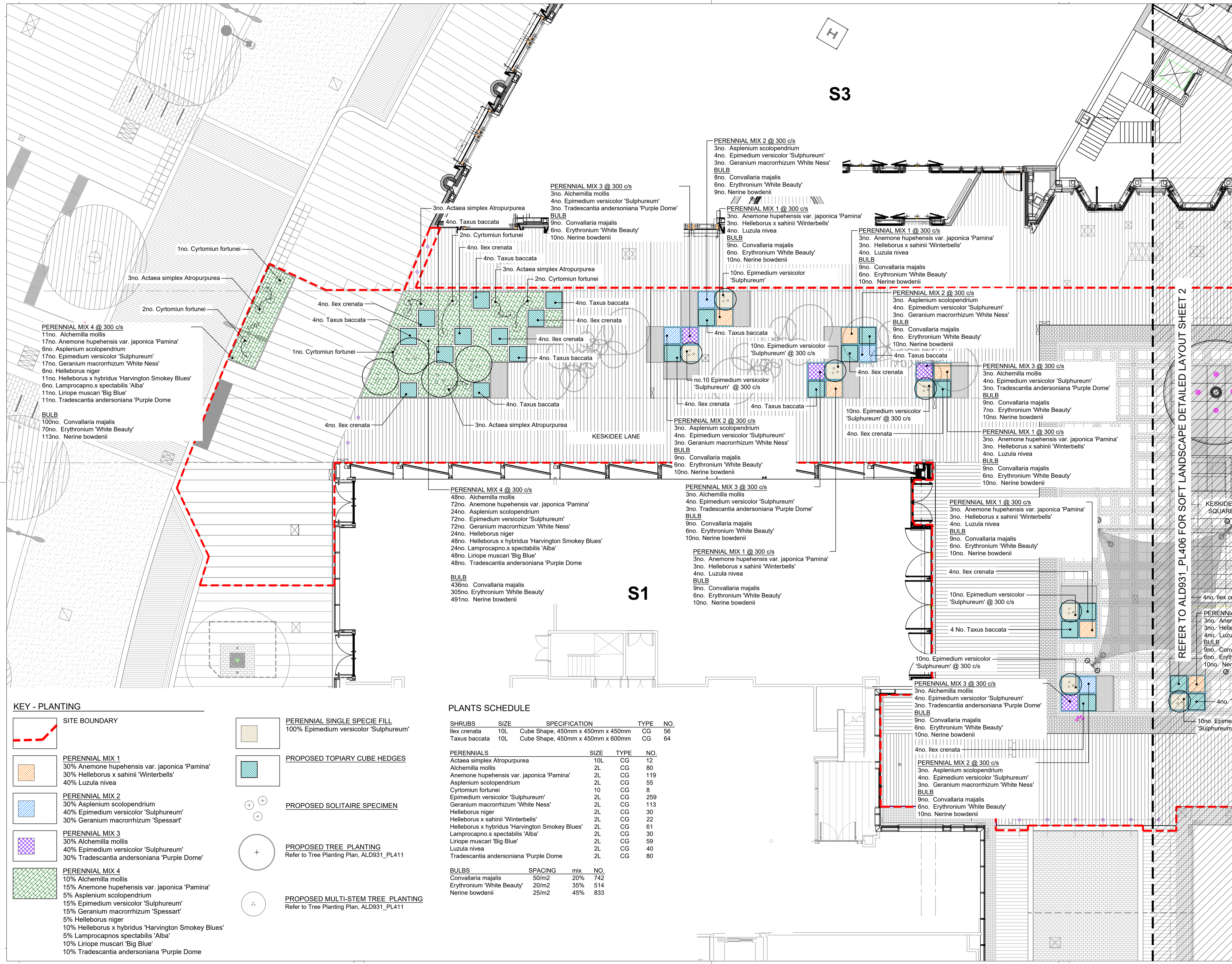
drawn: XW	checked: CW
scale: 1:200 @ A1	date: 21.04.2023
status: PLANNING	xref file ref: ALD931_PLbase

DRAWING NUMBER: ALD931_PL411	REVISION: P01
---------------------------------	------------------

All dimensions to be verified on site. Figured dimensions to take precedent to those scaled. Any areas indicated on this drawing are for guidance only, no responsibility is taken for their accuracy.
 The drawing is the property of Applied Landscape Design Limited. Copyright is reserved by them and the drawing is issued on the condition that it is not copied, reproduced, retained or disclosed to any unauthorised person, either wholly or in part without the written consent in writing of Applied Landscapes.
 © 2023 Applied Landscape Design Limited. All rights reserved.

CDM/H&S:
 The works illustrated on this drawing have been reviewed against the Design CDM Risk Register and significant risks are noted as:
 Construction:
 • Handling heavy materials, kerbs, paving materials
 • Working adjacent to highways, vehicular impact
 • Working adjacent to existing structures, boundary walls and buildings
 • Working in a 'live' site - pedestrian activity in close proximity
 • Risk of noise, dust from cutting activities
 Maintenance:
 • Working adjacent to highways, pedestrian areas, and in close proximity to residential areas

NOTES / KEY:



REFERENCE DRAWINGS/DOCUMENTS

ALD931_MP010	General Arrangement
ALD931_PL411	Tree Planting General Arrangement

REVISIONS

no.	issued	drn	chkd	date
P01	FOR APPROVAL	XW	CW	22.12.23

CLIENT:
KCCGPL

LANDSCAPE ARCHITECT:
ALD applied landscape design
 Falcon House
 Telford Road, Bicester
 Oxfordshire, OX26 4LD
 Tel: 01869 249776
 Email: mail@appliedlandscape.co.uk

PROJECT:
**BUILDING S4 PUBLIC REALM
 KESKIDEE SQUARE, KXC**

DRAWING TITLE:
**KESKIDEE SQUARE PUBLIC REALM
 SOFT LANDSCAPE - PLANNING
 DETAILED LAYOUT SHEET 1**

drawn: XW	checked: CW
scale: 1:00 @ A1	date: 21.04.2023
status: PLANNING	xref file ref: ALD931_PLbase
DRAWING NUMBER: ALD931_PL415	REVISION: P01

KEY - PLANTING

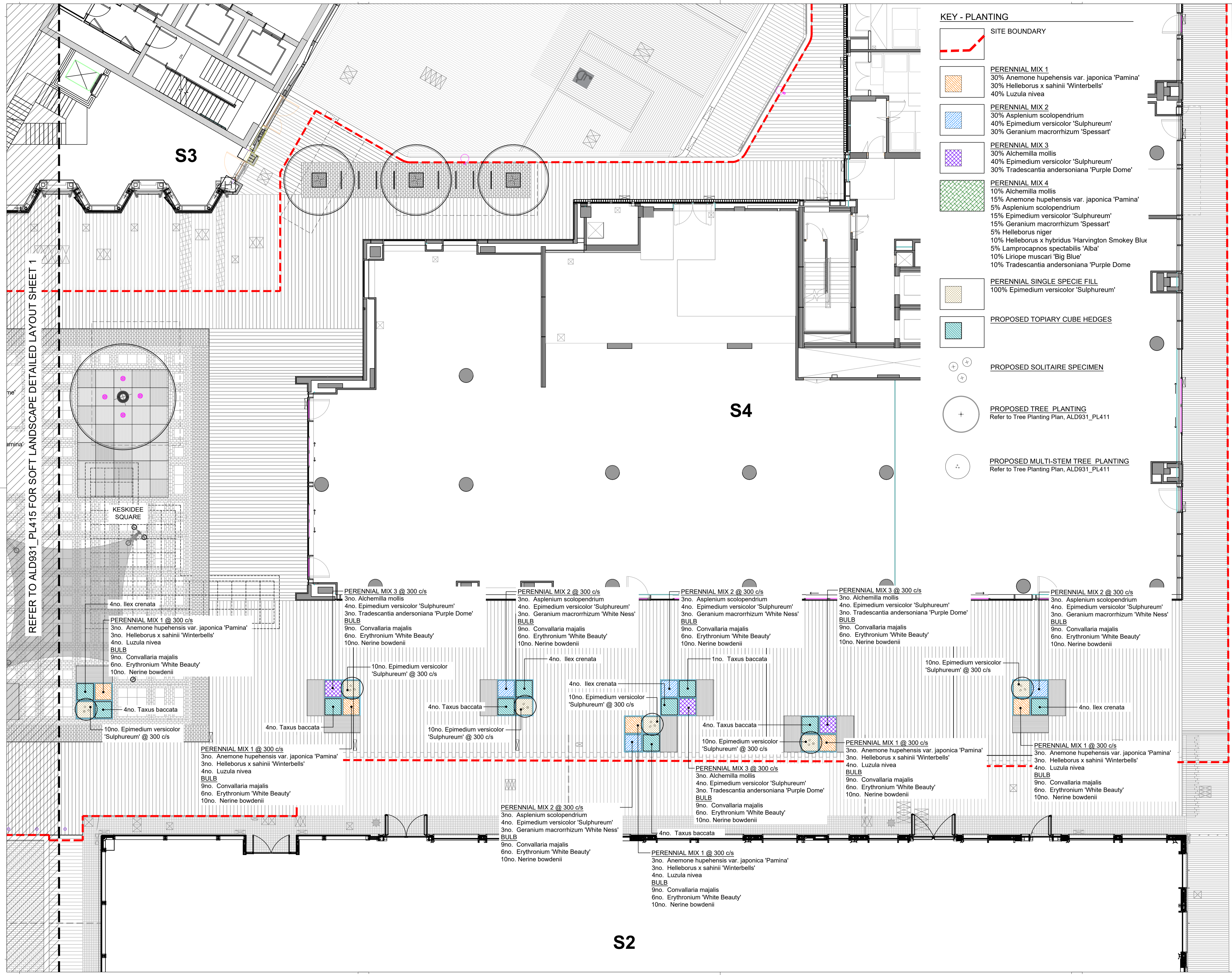
- SITE BOUNDARY
- PERENNIAL MIX 1
30% *Anemone hupehensis var. japonica 'Pamina'*
30% *Helleborus x sahinii 'Winterbells'*
40% *Luzula nivea*
- PERENNIAL MIX 2
30% *Asplenium scolopendrium*
40% *Epimedium versicolor 'Sulphureum'*
30% *Geranium macrorrhizum 'Spessart'*
- PERENNIAL MIX 3
30% *Alchemilla mollis*
40% *Epimedium versicolor 'Sulphureum'*
30% *Tradescantia andersoniana 'Purple Dome'*
- PERENNIAL MIX 4
10% *Alchemilla mollis*
15% *Anemone hupehensis var. japonica 'Pamina'*
5% *Asplenium scolopendrium*
15% *Epimedium versicolor 'Sulphureum'*
15% *Geranium macrorrhizum 'Spessart'*
5% *Helleborus niger*
10% *Helleborus x hybridus 'Harvington Smokey Blues'*
5% *Lamprocapnos spectabilis 'Alba'*
10% *Liriope muscari 'Big Blue'*
10% *Tradescantia andersoniana 'Purple Dome'*
- PERENNIAL SINGLE SPECIE FILL
100% *Epimedium versicolor 'Sulphureum'*
- PROPOSED TOPIARY CUBE HEDGES
- PROPOSED SOLITAIRE SPECIMEN
- PROPOSED TREE PLANTING
Refer to Tree Planting Plan, ALD931_PL411
- PROPOSED MULTI-STEM TREE PLANTING
Refer to Tree Planting Plan, ALD931_PL411

PLANTS SCHEDULE

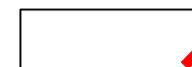


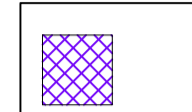


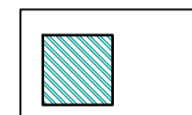
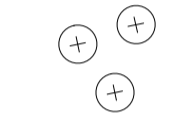

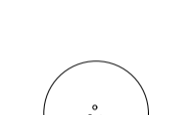
SHRUBS	SIZE	SPECIFICATION	TYPE	NO.
<i>Ilex crenata</i>	10L	Cube Shape, 450mm x 450mm x 450mm	CG	56
<i>Taxus baccata</i>	10L	Cube Shape, 450mm x 450mm x 600mm	CG	64

PERENNIALS	SIZE	TYPE	NO.
<i>Actaea simplex Atropurpurea</i>	10L	CG	12
<i>Alchemilla mollis</i>	2L	CG	80
<i>Anemone hupehensis var. japonica 'Pamina'</i>	2L	CG	119
<i>Asplenium scolopendrium</i>	2L	CG	55
<i>Cyrtomium fortunei</i>	10	CG	8
<i>Epimedium versicolor 'Sulphureum'</i>	2L	CG	259
<i>Geranium macrorrhizum 'White Ness'</i>	2L	CG	113
<i>Helleborus niger</i>	2L	CG	30
<i>Helleborus x sahinii 'Winterbells'</i>	2L	CG	22
<i>Helleborus x hybridus 'Harvington Smokey Blues'</i>	2L	CG	61
<i>Lamprocapnos spectabilis 'Alba'</i>	2L	CG	30
<i>Liriope muscari 'Big Blue'</i>	2L	CG	59
<i>Luzula nivea</i>	2L	CG	40
<i>Tradescantia andersoniana 'Purple Dome'</i>	2L	CG	80

BULBS	SPACING	mix	NO.
<i>Convallaria majalis</i>	50/m2	20%	742
<i>Erythronium 'White Beauty'</i>	20/m2	35%	514
<i>Nerine bowdenii</i>	25/m2	45%	833



KEY - PLANTING

-  SITE BOUNDARY
-  PERENNIAL MIX 1
30% Anemone hupehensis var. japonica 'Pamina'
30% Helleborus x sahinii 'Winterbells'
40% Luzula nivea
-  PERENNIAL MIX 2
30% Asplenium scolopendrium
40% Epimedium versicolor 'Sulphureum'
30% Geranium macrorrhizum 'Spessart'
-  PERENNIAL MIX 3
30% Alchemilla mollis
40% Epimedium versicolor 'Sulphureum'
30% Tradescantia andersoniana 'Purple Dome'
-  PERENNIAL MIX 4
10% Alchemilla mollis
15% Anemone hupehensis var. japonica 'Pamina'
5% Asplenium scolopendrium
15% Epimedium versicolor 'Sulphureum'
15% Geranium macrorrhizum 'Spessart'
5% Helleborus niger
10% Helleborus x hybridus 'Harvington Smokey Blue'
5% Lamprocapnos spectabilis 'Alba'
10% Liriope muscari 'Big Blue'
10% Tradescantia andersoniana 'Purple Dome'
-  PERENNIAL SINGLE SPECIE FILL
100% Epimedium versicolor 'Sulphureum'
-  PROPOSED TOPIARY CUBE HEDGES
-  PROPOSED SOLITAIRE SPECIMEN
-  PROPOSED TREE PLANTING
Refer to Tree Planting Plan, ALD931_PL411
-  PROPOSED MULTI-STEM TREE PLANTING
Refer to Tree Planting Plan, ALD931_PL411

All dimensions to be verified on site. Figured dimensions to take precedence to those scaled. Any areas indicated on this drawing are for guidance only, no responsibility is taken for their accuracy.
The drawing is the property of Applied Landscape Design Limited. Copyright is reserved by them and the drawing is issued on the condition that it is not copied, reproduced, retained or disclosed to any unauthorized person, either wholly or in part without the written consent in writing of Applied Landscapes.

© 2023 Applied Landscape Design Limited. All rights reserved.

CDM/H&S:
The works illustrated on this drawing have been reviewed against the Design CDM Risk Register and significant risks are noted as:
Construction:
• Handling heavy materials, kerbs, paving materials
• Working adjacent to highways, vehicular impact
• Working adjacent to existing structures, boundary walls and buildings
• Working in a 'live' site - pedestrian activity in close proximity
• Risk of noise, dust from cutting activities
Maintenance:
• Working adjacent to highways, pedestrian areas, and in close proximity to residential areas

NOTES / KEY:

NOTE:
For Plant Schedule refer to drawing ALD931_PL415

REFERENCE DRAWINGS/DOCUMENTS

ALD931_MP010	General Arrangement
ALD931_PL411	Tree Planting General Arrangement

REVISIONS

no.	issued	drn	chkd	date
P01	FOR APPROVAL	XW	CW	22.12.23

CLIENT:

KCCGPL

LANDSCAPE ARCHITECT:
ALD applied landscape design
Falcon House
Telford Road, Bicester
Oxfordshire, OX26 4LD
Tel: 01869 249776
Email: mail@appliedlandscape.co.uk

PROJECT:

**BUILDING S4 PUBLIC REALM
KESKIDEE SQUARE, KXC**

DRAWING TITLE:
**KESKIDEE SQUARE PUBLIC REALM
SOFT LANDSCAPE - PLANNING
DETAILED LAYOUT SHEET 2**

drawn: XW	checked: CW
scale: 1:00 @ A1	date: 21.04.2023
status: PLANNING	xref file ref: ALD931_PLbase

DRAWING NUMBER: ALD931_PL416	REVISION: P01
---------------------------------	------------------