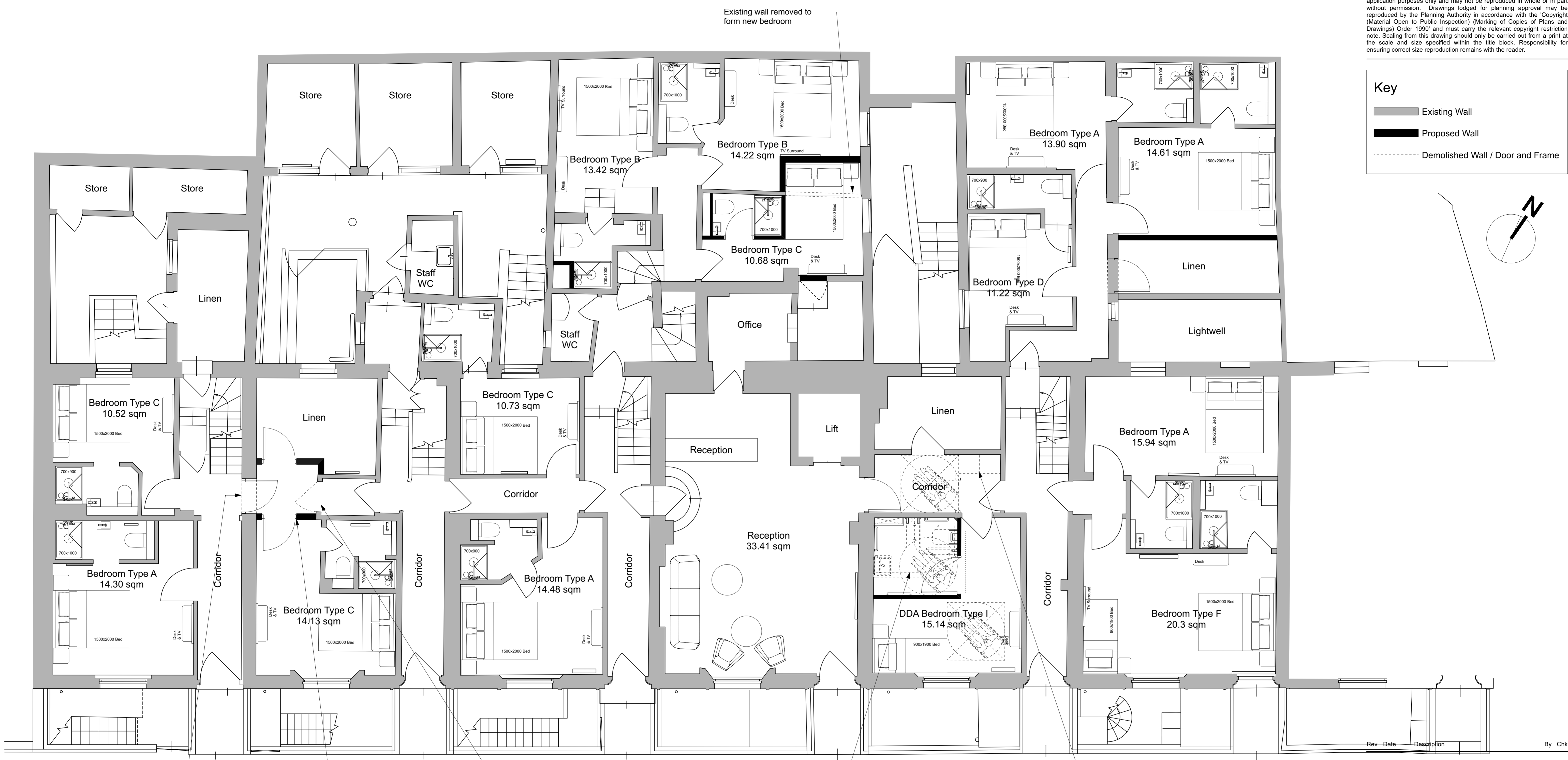
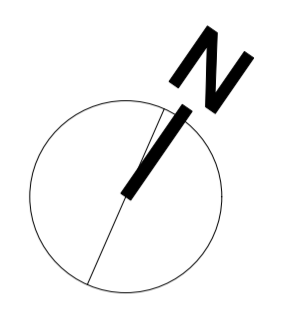


This drawing is the copyright of Axiom Architects. It is for planning application purposes only and may not be reproduced in whole or in part without permission. Drawings lodged for planning approval may be reproduced by the Planning Authority in accordance with the "Copyright (Material Open to Public Inspection) (Marking of Copies of Plans and Drawings) Order 1997" and must carry the relevant copyright restriction note. Scaling from this drawing should only be carried out from a print at the scale and size specified within the title block. Responsibility for ensuring correct size reproduction remains with the reader.

Key

- Existing Wall
- Proposed Wall
- Demolished Wall / Door and Frame



Form new door opening shown dashed to link hotel at ground floor

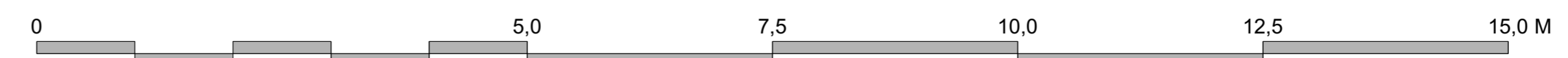
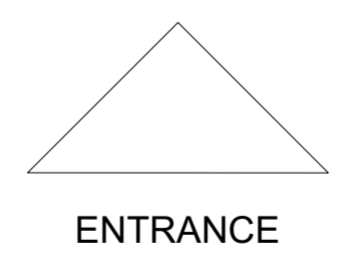
Form new partition

Existing wall and door removed

Existing wall removed to form accessible toilet

Existing wall and door removed to form entrance to accessible bedroom

2 Proposed Ground Floor Plan
Scale: 1:50



1 Brooklands Yard Southover High Street Lewes East Sussex BN7 1HU
Tel. 01273 479434 www.axiomarchitects.co.uk

Client
Splendid Hospitality Group

Project
Comfort Inn
St Chad's Street
London

Drawing
Proposed Ground Floor Plan

Scale	Date	Drawn	Checked
1:50	12/10/2023	AB	AB

Drawing No. Revision

4924-P2- 021

Status
PLANNING