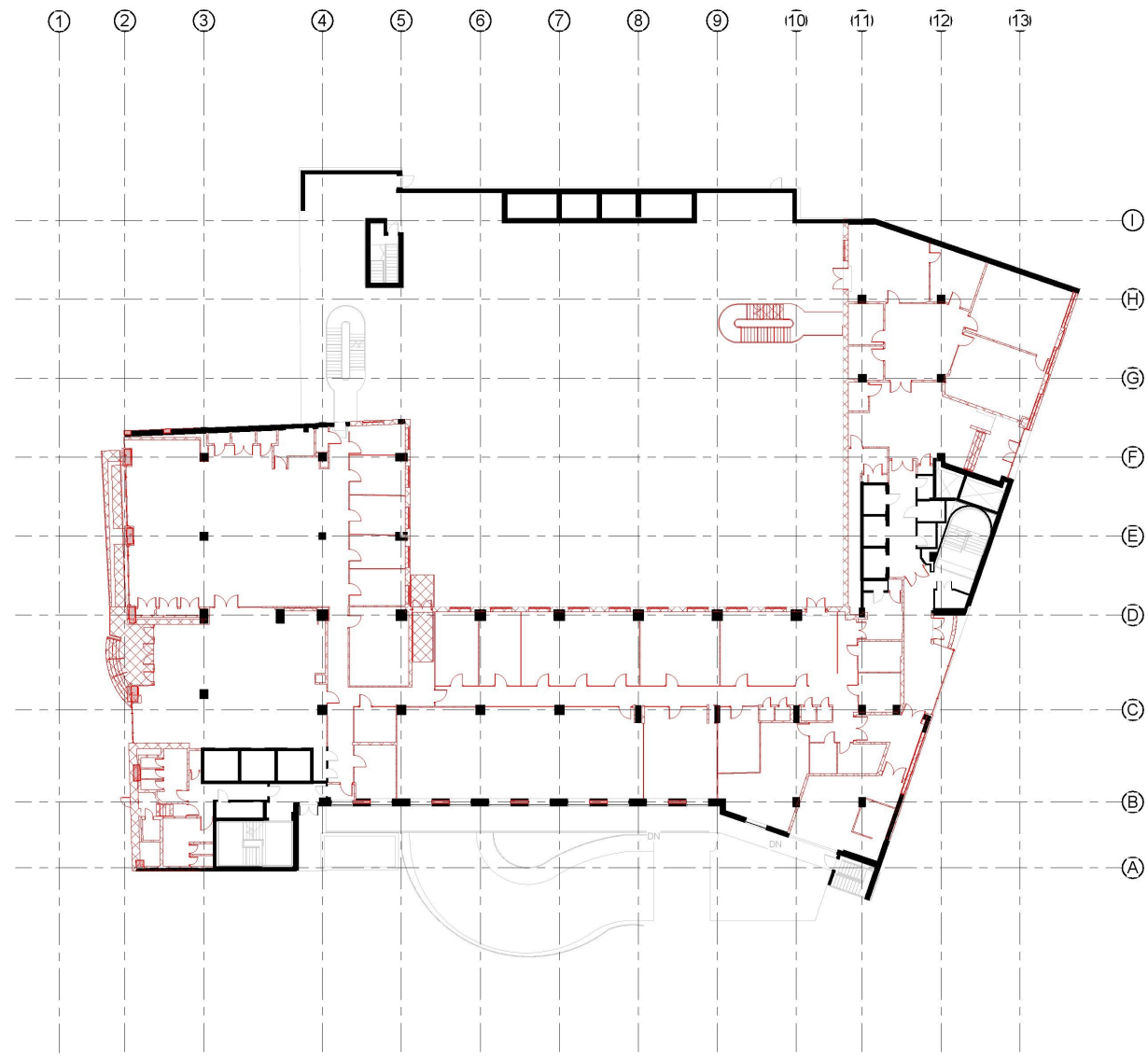


Key:



© Buckley Gray Yeoman Ltd.  
 All dimensions to be checked on site prior to commencement of any works, and/or preparation of any shop drawings for actual sizes/dimensions. Sizes of and dimensions to any structural elements are indicative only. See structural engineers drawings for actual sizes and dimensions.  
 See service engineers drawings for actual sizes and dimensions.  
 This drawing to be read in conjunction with all other Architect's drawings, specifications and other Consultants' information. All proprietary systems shown on this drawing are to be installed strictly in accordance with the Manufacturers/Suppliers recommended details.  
 Any discrepancies between information shown on this drawing and any other contract information or manufacturers/suppliers recommendations is to be brought to the attention of the Architect.  
 DO NOT SCALE FROM THIS DRAWING.

**GENERAL NOTES:**

**KEY**

- Building fabric to be demolished
- Screed and existing floor finishes layer to be demolished

**Extent of demolition TBC, pending Structural Engineer's information**

REV	DATE	NOTE

CLIENT <b>General Projects and Valeo Capital</b>	DRAWING <b>Demolition Plan - Level 00</b>
PROJECT <b>Fox Court</b>	STATUS APPROVED BY <b>SX</b>
DWG No. <b>1195-BGY-XXX-100L-DR-A-02100</b>	REVISION SCALE <b>As indicated @A1</b>
	DATE

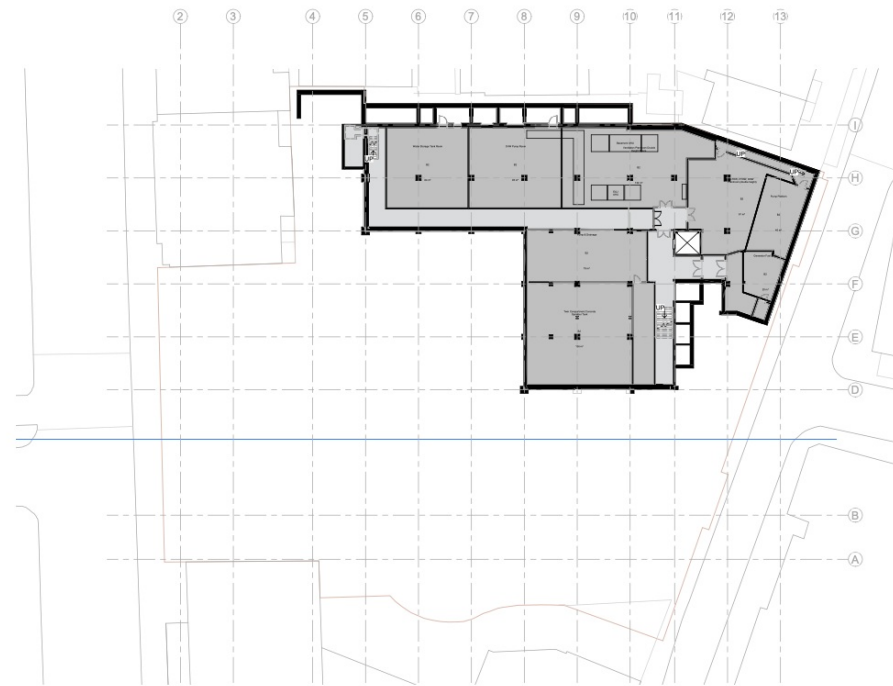
**BGY**  
 BUCKLEY GRAY YEOMAN  
 + 44 20 7033 9913  
 BGY.CO.UK



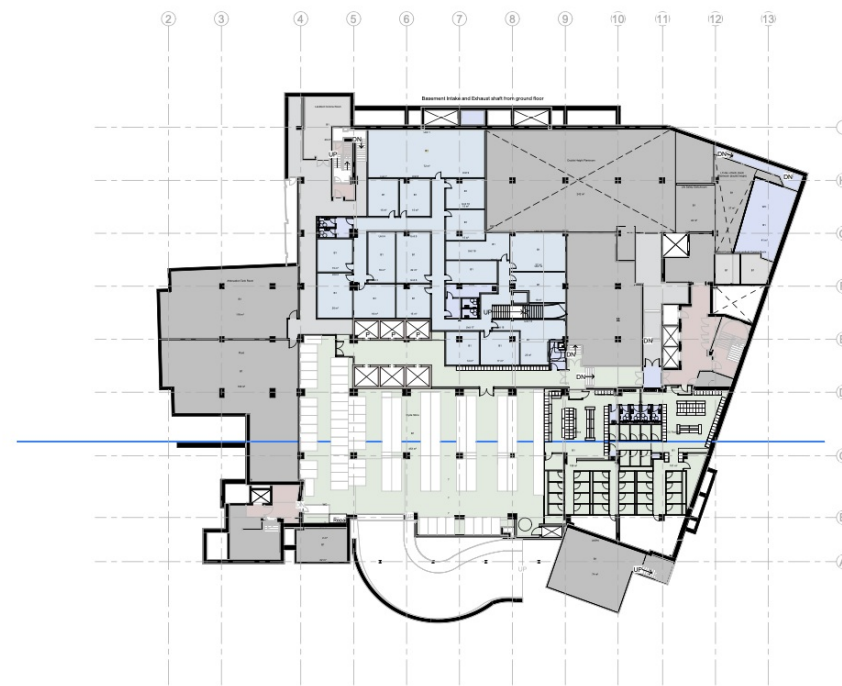
**Grays Inn Rd, London**

Figure 16  
 Demolition plan level 00

## Proposed Plans



**Basement 2**



**Basement 1**

BUCKLEY GRAY YEOMAN

Key:



HAWK HERITAGE

### Grays Inn Rd, London

Figure 17

Proposed plans Basement level 2 and  
basement level 1



Fig 18.View of the site from Gray's Inn Rd



Fig 19. View of the rear of the site



Fig 20. View of the courtyard