

- THIS DRAWING IS TO BE READ IN CONJUNCTION WITH ALL RELEVANT ARCHITECTS AND ENGINEERS DRAWINGS AND SPECIFICATIONS.
- ALL FIRE DAMPERS REQUIRE SUITABLE ACCESS. ACCESS DOORS IN PLASTERBOARD CEILING/WALLS ARE TO BE PROVIDED BY THE MAIN CONTRACTOR WHERE DUCTWORK ACCESS DOORS ARE SHOWN.
- ALL FIRE DAMPERS OPENING ARE TO BE TRIMMED BY WALLING TO ALLOW FIXING INTO PROPRIETARY STUD WORK IN ACCORDANCE WITH THE MANUFACTURERS DETAILS.
- SUITABLE SPACE IS TO BE LEFT ALONG DUCTWORK TO FACILITATE CORRECT BEFORE & AFTER SPACINGS FOR TEST POINTS.
- COMMISSIONING ENGINEERS ARE TO INCLUDE FOR INSERTING TEST POINTS & ALSO PROVIDING & INSTALLING TEST POINT CAPS.
- ALL DUCTWORK TO BE TESTED IN COMPLIANCE WITH THE REQUIREMENTS FOR THE PROJECT SPECIFIC EPC/PART L COMPLIANCE CHECK LIST. THE FOLLOWING FINISHES ARE TO BE APPLIED TO THERMAL INSULATION:
 - CEILING VOID - FOIL FACE FINISH
 - PLANT ROOMS - VENTURE CLAD INTERNAL & EXTERNAL
 - RISERS - FOIL FACE FINISH
 - VRF SECONDARY/CONDITIONED AIR DUCTWORK - FOIL FACE FINISH
- THE DUCTWORK CONTRACTOR IS DEEMED TO OR INCLUDED FOR ALL NECESSARY OFFSETS AND BENDS TO PROVIDE A COMPLETE INSTALLATION.
- ALL METAL DUCTWORK IS TO BE INSTALLED IN ACCORDANCE WITH DW144 SPECIFICATION FOR SHEET METAL DUCTWORK - LOW, MEDIUM & HIGH PRESSURE/VELOCITY AIR SYSTEMS.
- ALL DUCTWORK IS TO BE INSTALLED AN INTERMEDIATE PROTECTION, DELIVERY AND INSTALLATION STANDARD AS SET OUT WITHIN TR15.
- ALL DIMENSIONS ARE IN MILLIMETRES.
- DUCTWORK WITHIN RISERS AND FOLLOW AREAS SHALL BE INSULATED, WHERE DUCTWORK IS EXPOSED IN AN OCCUPIED ROOM IT SHALL NOT BE INSULATED.
- ALL DUCTWORK FINAL CONNECTIONS SHALL BE INSTALLED IN FLEXIBLE DUCTWORK WITH A MAXIMUM DISTANCE OF 600mm.
- THE CONTRACTOR SHALL ALLOW FOR ALL ACCESS HATCHES IN DUCTWORK TO FACILITATE CLEANING AND ACCESS FIRE DAMPERS. AS A MINIMUM THIS SHOULD BE BEFORE AND AFTER EACH DAMPER, 1 No. FOR EACH BEND, AND 1 No Every 10m OF STRAIGHT RUNS.
- ALL MFD'S TO BE CONTROLLED VIA CENTRAL PANEL LOCATED IN PLANTROOM (FINAL POSITION TBC) AND MONITORED BY BMS.
- ALL FINAL BRANCHES TO HAVE VCD'S IN ORDER TO COMMISSION APPROPRIATELY. (UNLESS AIR VALVE TYPE USED FOR FINAL COMMISSIONING / FINE BALANCING)

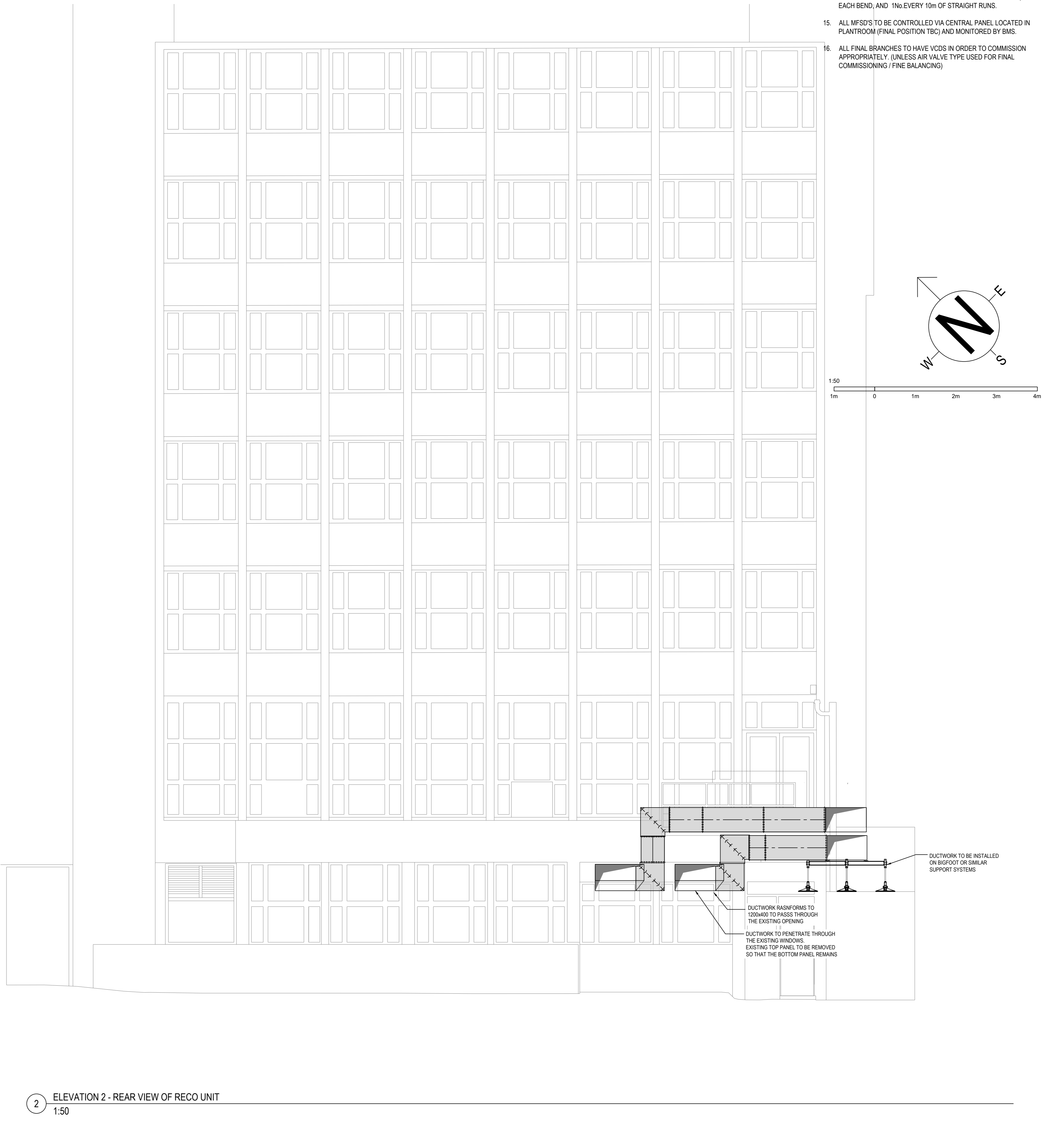
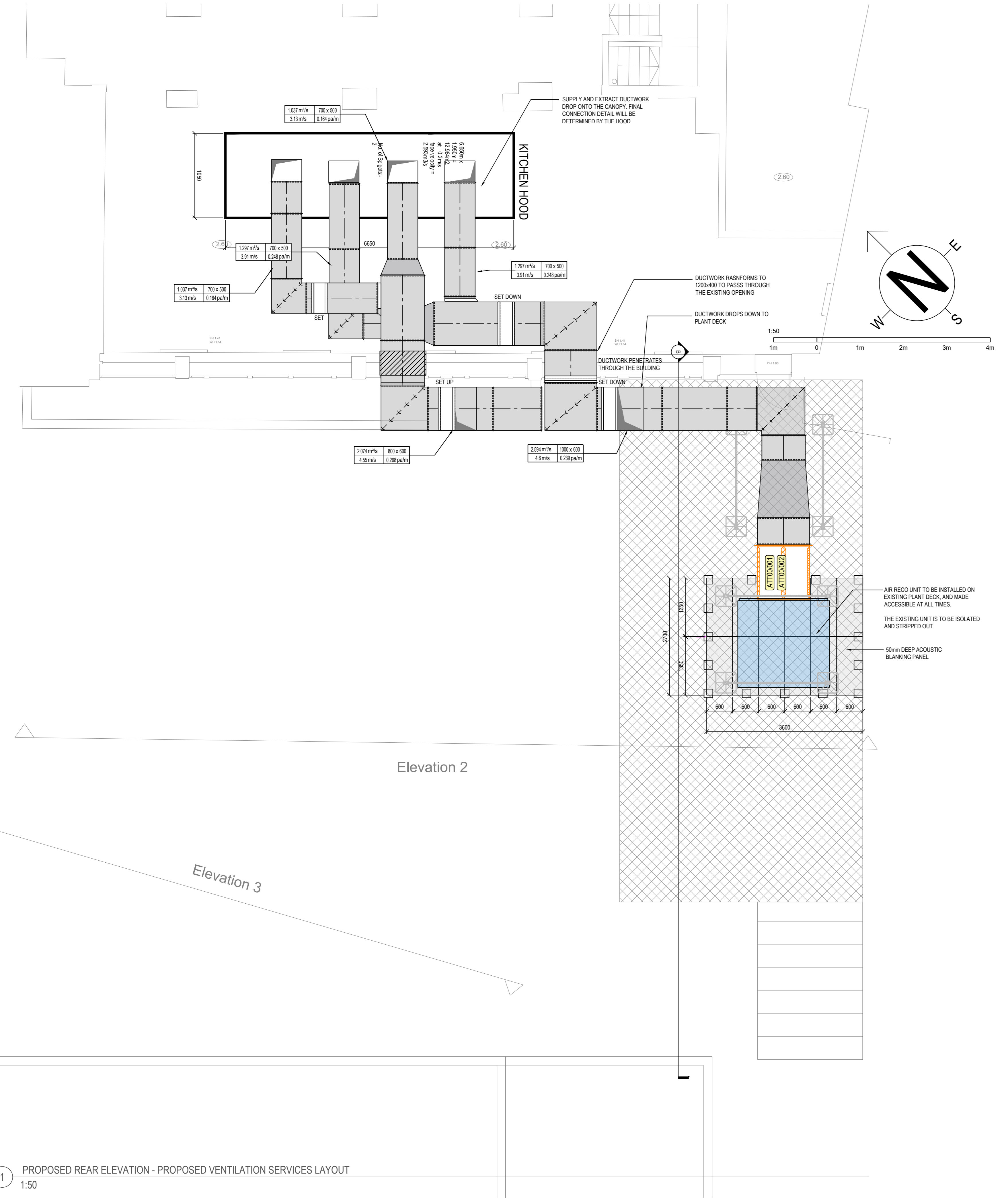
PROTECTED BY UK COPYRIGHT LAW

LEGEND

- CD SINGLE LEAF VOLUME CONTROL DAMPER
- CDX MULTILEAF VOLUME CONTROL DAMPER
- FD FIRE DAMPER
- Y ATTENUATOR
- FC FLEXIBLE CONNECTION
- LG LINEAR GRILLE
- EX EXTRACT BELLMOUTH
- EXD EXTRACT DUCT
- SU SUPPLY DUCT
- REF REFERENCE

ACRONYMS

- RIS RISE FROM BELOW
- RTH RISE TO HIGH LEVEL
- RTA RISE TO ABOVE
- DTB DROP TO BELOW
- DTL DROP TO LOW LEVEL
- DFA DROP FROM ABOVE
- GREY SERVICES DENOTES EXISTING



REV	DESCRIPTION	DES	CHK	DATE
P05	ACOUSTIC ENCLOSURE ADDED	J.L.W.	J.R.	15.12.23
P04	ELEVATION LINE REMOVED	J.L.W.	J.R.	30.11.23
P03	COMMENTS IMPLEMENTED	J.L.W.	J.R.	28.11.23
P02	REVISED ISSUE FOR PLANNING	J.J.	C.S.	22.11.23
P01	INITIAL ISSUE FOR COMMENT/ APPROVAL	J.J.	C.S.	11.10.23

JPA
MEP CONSULTANTS | BIM | SUSTAINABILITY
LONDON - EDINBURGH - NEWCASTLE
e: admin@jpaconsultants.co.uk | w: www.jpaconsultants.co.uk

Colliers

PROJECT
58 SOUTHAMPTON ROW, LONDON WC1B 4NB

SCALE: 1:50 ORIGINAL PAPER SIZE: A0 DATE: Dec-23

DRAWN: J.J. DESIGNED: J.J. CHECKED: J.J.

CONTRACT: J0226-JPA-ZZ-00-DR-M-57101

TITLE: Proposed Rear Elevation - Proposed Ventilation Services Layout REVISION: P05