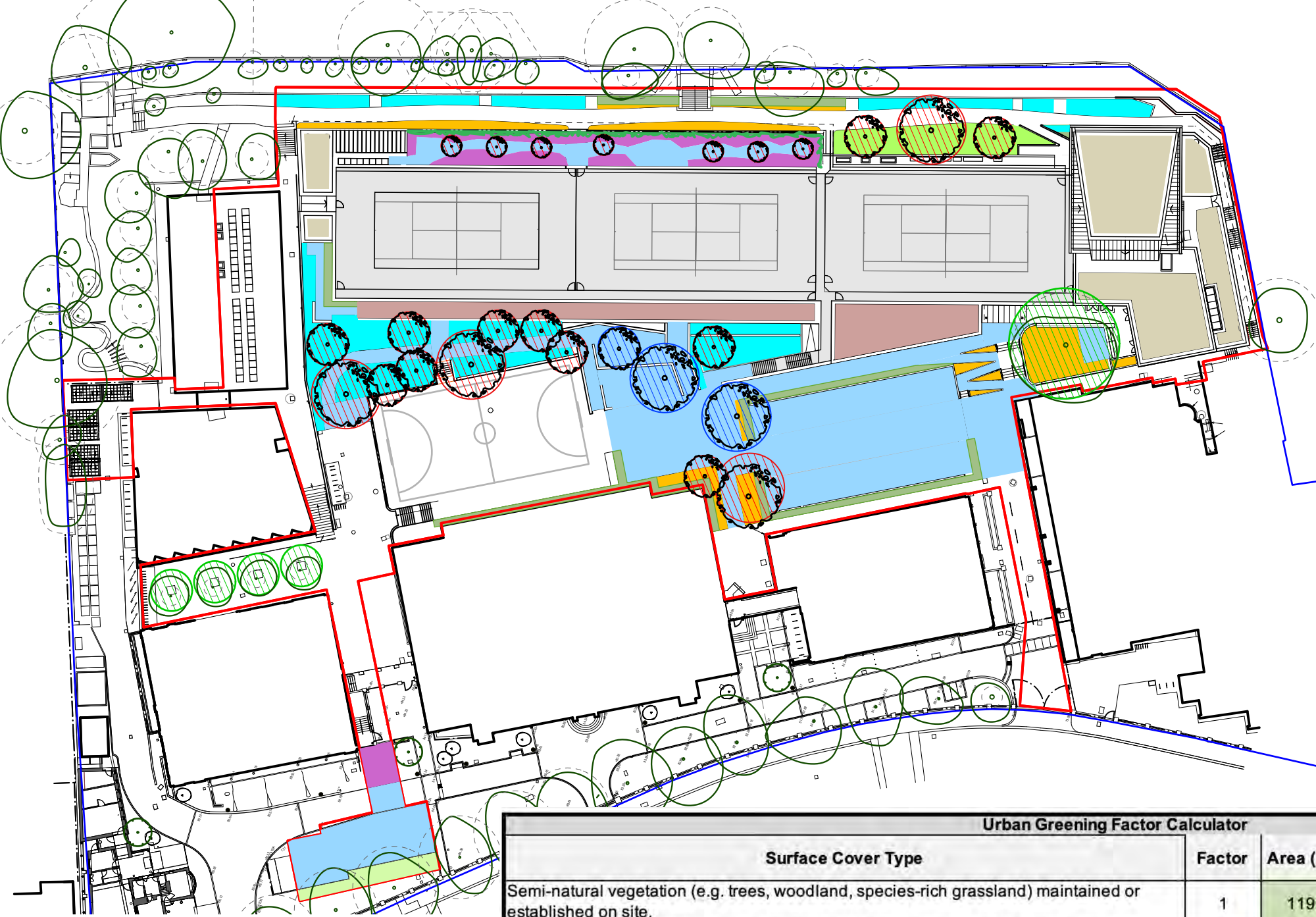
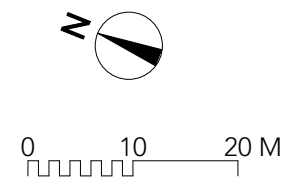


Do not scale from this drawing. This drawing is based on dimensional survey information provided by others. The landscape architect cannot accept responsibility for the accuracy of this survey information. All dimensions are shown in metric.  
This drawing remains the copyright of Staton Cohen Ltd.



- Semi natural vegetation - Native Scrub
- Semi natural vegetation - Meadow grass
- Semi natural vegetation - Ex Trees
- Intensive Green Roof - Native Scrub
- Standard trees planted in connected tree pit with soil volume equivalent to 2/3 mature canopy size  
Small tree: 3m dia spread  
Medium tree: 6m dia spread  
Large tree: 10m dia spread
- Extensive Green Roof - Meets GRO code 2014
- Flower rich perennial planting
- Hedges
- Standard trees planted in pits with soil volumes less than 2/3 mature canopy size
- Green Wall - 3.5m high below solar panels plus 1.1m high on guardrail above
- Groundcover planting
- Amenity grassland. Species poor, regularly mown.
- Permeable paving
- Site Boundary



Urban Greening Factor Calculator				
Surface Cover Type	Factor	Area (m <sup>2</sup> )	Contribution	Notes
Semi-natural vegetation (e.g. trees, woodland, species-rich grassland) maintained or established on site.	1	1198	1198	Includes ex tree canopies, heath planting to south and scrub planting to north & intensive roof areas (planted with heath species)
Wetland or open water (semi-natural; not chlorinated) maintained or established on site.	1	0	0	
Intensive green roof or vegetation over structure. Substrate minimum settled depth of 150mm.	0,8	0	0	
Standard trees planted in connected tree pits with a minimum soil volume equivalent to at least two thirds of the projected canopy area of the mature tree.	0,8	651	520,8	
Extensive green roof with substrate of minimum settled depth of 80mm (or 60mm beneath vegetation blanket) – meets the requirements of GRO Code 2014.	0,7	419	293,3	
Flower-rich perennial planting.	0,7	211	147,7	
Rain gardens and other vegetated sustainable drainage elements.	0,7	0	0	Included in semi-natural heath planting
Hedges (line of mature shrubs one or two shrubs wide).	0,6	183	109,8	
Standard trees planted in pits with soil volumes less than two thirds of the projected canopy area of the mature tree.	0,6	185	111	
Green wall –modular system or climbers rooted in soil.	0,6	296	177,6	
Groundcover planting.	0,5	181	90,5	
Amenity grassland (species-poor, regularly mown lawn).	0,4	44	17,6	
Extensive green roof of sedum mat or other lightweight systems that do not meet GRO Code 2014.	0,3		0	
Water features (chlorinated) or unplanted detention basins.	0,2		0	
Permeable paving.	0,1	1548	154,8	
Sealed surfaces (e.g. concrete, asphalt, waterproofing, stone).	0		0	
<b>Total contribution</b>			<b>2821,1</b>	
<b>Total site area (m<sup>2</sup>)</b>				<b>9231</b>
<b>Urban Greening Factor</b>				<b>0,305611526</b>

A Green wall measurement adjusted. 14/12/23  
ISSUE REASON FOR ISSUE DATE

## STATON COHEN

### Landscape Architecture

The Studio,  
34 Warwick Road  
Barnet  
EN5 5EH

www.statoncohen.com  
office@statoncohen.com  
0208 441 8629

PROJECT  
**UCS 200**

PROJECT CODE P192      CLIENT University College School

DRAWING TITLE  
**UGF Calculations**

SCALE NTS @ A3      DATE OF FIRST ISSUE DEC 2023

DRAWING NUMBER PL07      REVISION A      STATUS PLANNING