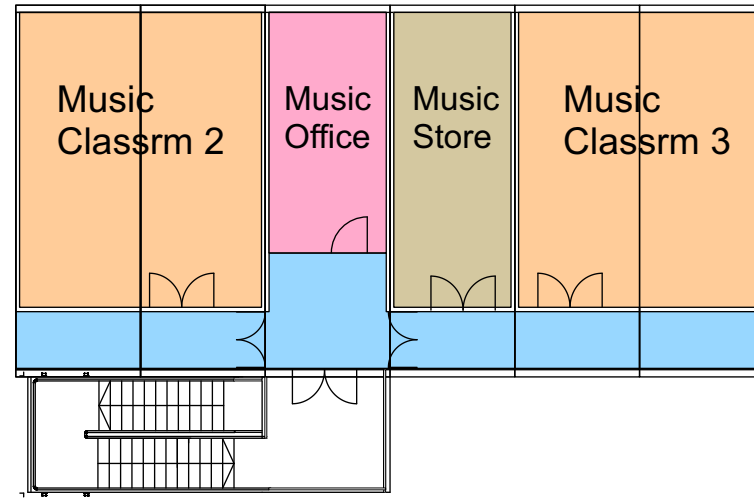
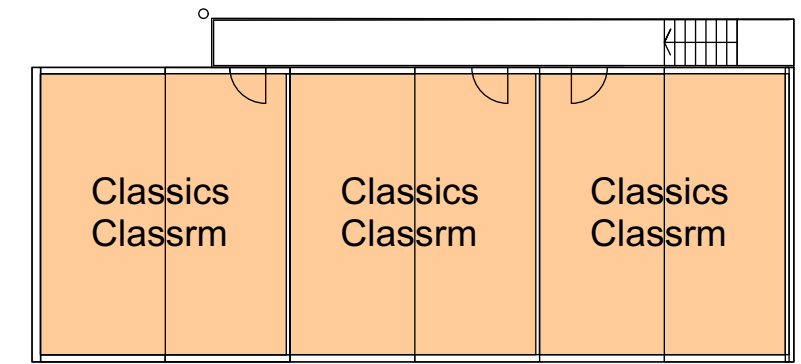


2-Storey East Block
Ground floor plan



2-Storey East Block
First floor plan



1-Storey West Block
Ground floor plan



Ground floor - refer to site plan

Individual cabins
Located as site layout, 6 no. independent units

Modular construction temporary accommodation:

Located as site layout, temporary accommdation units are modular proprietary interlinked cabins with accompanying modular access / fire escape stairs.

Final design & size will be made at award of cabins tender - approximate size only shown here.

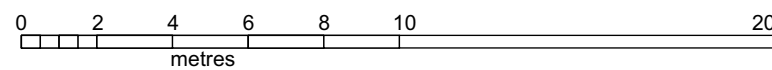
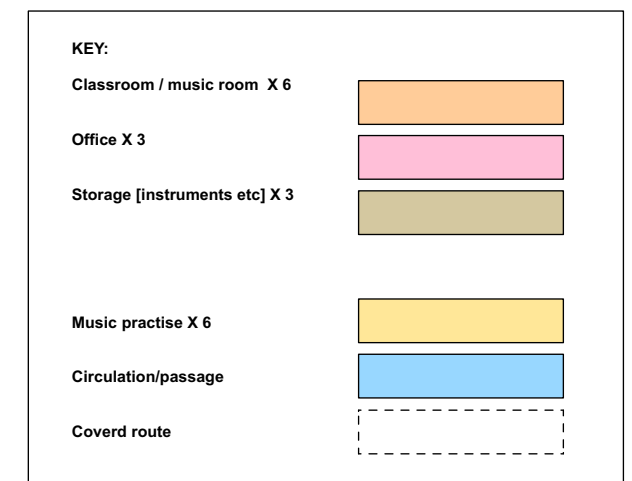
Finish of units - ppc / colour-coated steel panels

Colour of units - light grey

Units will be installed prior to start of main Construction project - units will be removed and all made good at completion of Construction project.

Areas:

East Block total GIA area	= 410 m2 including covered stairs
West Block total GIA area	= 146 m2
Music Practise Pods GIA area	= 6 x 13 = 78 m2
Temporary Accommodation Total GIA area	= 634 m2



ed toovey architects

studio 401 royle building
31 wenlock road
london n1 7sh
07880 725763
edtoovey@yahoo.co.uk

Revisions:

PLANNING ISSUE

- Always take site measurements to verify dimensions
- Refer to M&E Engineers drawings for all services

University College School : Project 200 East development

Temp Accommodation Units - Detail Plans Drwg No. 2037 / GA / 007 -

November 2023

Scale 1:200 @ A3