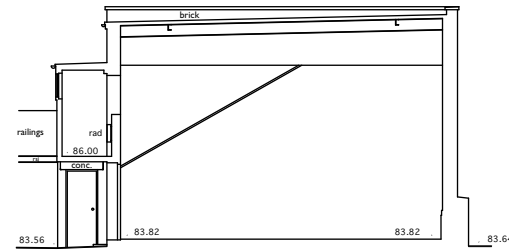
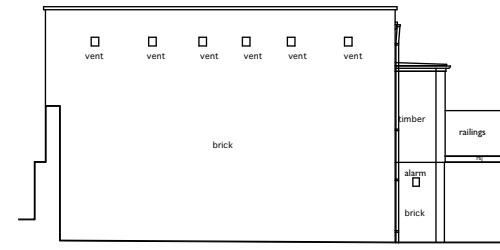


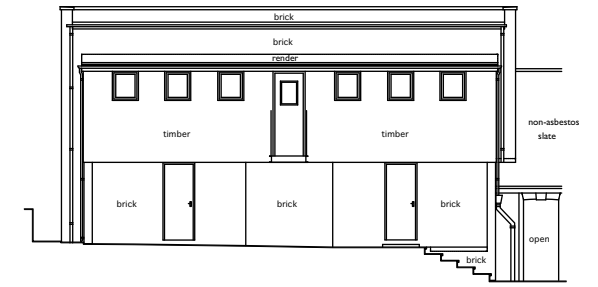
SOUTH-WEST ELEVATION



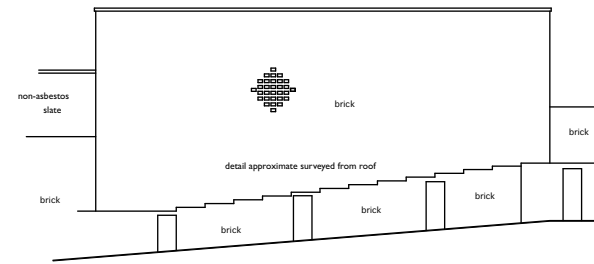
SECTION B-B



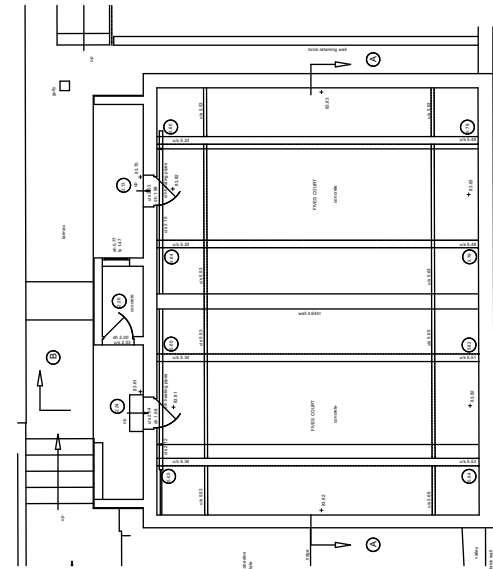
NORTH-EAST ELEVATION



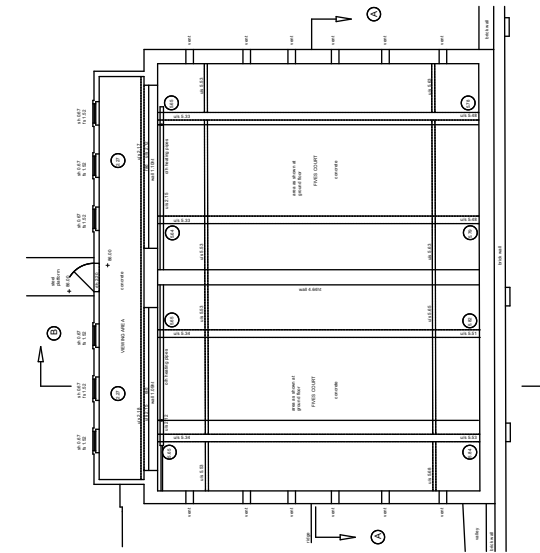
NORTH-WEST ELEVATION



SOUTH-EAST ELEVATION

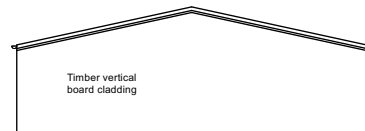


GROUND FLOOR PLAN

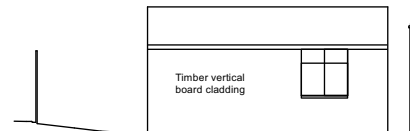


FIRST FLOOR PLAN

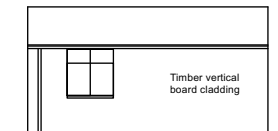
From survey drawings January 2000



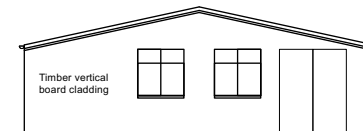
SOUTH ELEVATION



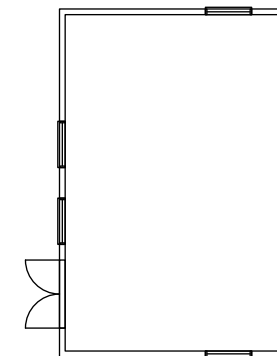
WEST ELEVATION



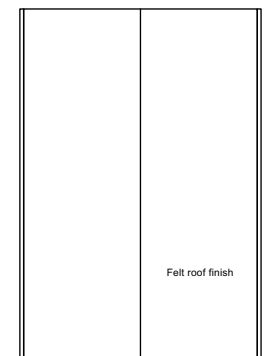
EAST ELEVATION



NORTH ELEVATION



GROUND FLOOR PLAN



ROOF PLAN



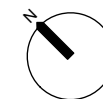
**ed toovey architects**

studio 401 royle building  
31 wenlock road  
london n1 7sh  
07880 725763  
edtoovey@yahoo.co.uk

Revisions:

**PLANNING ISSUE**

- Always take site measurements to verify dimensions  
- Refer to M&E Engineers drawings for all services



University College School : Project 200 East development

Existing Fives + Maintenance Hut survey

May 2021

Drwg No. 2037 / GS / 005 -

Scale 1:200 @ A3