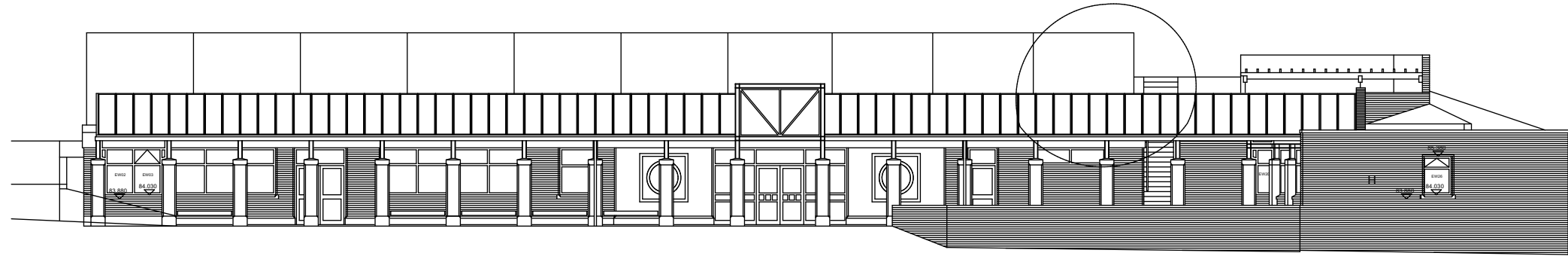
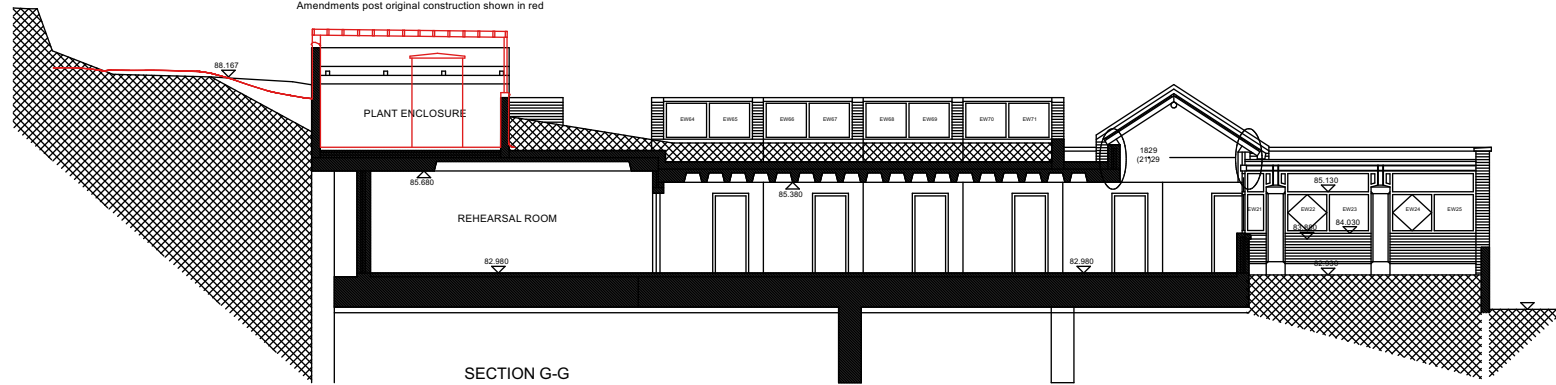


PART NORTH ELEVATION

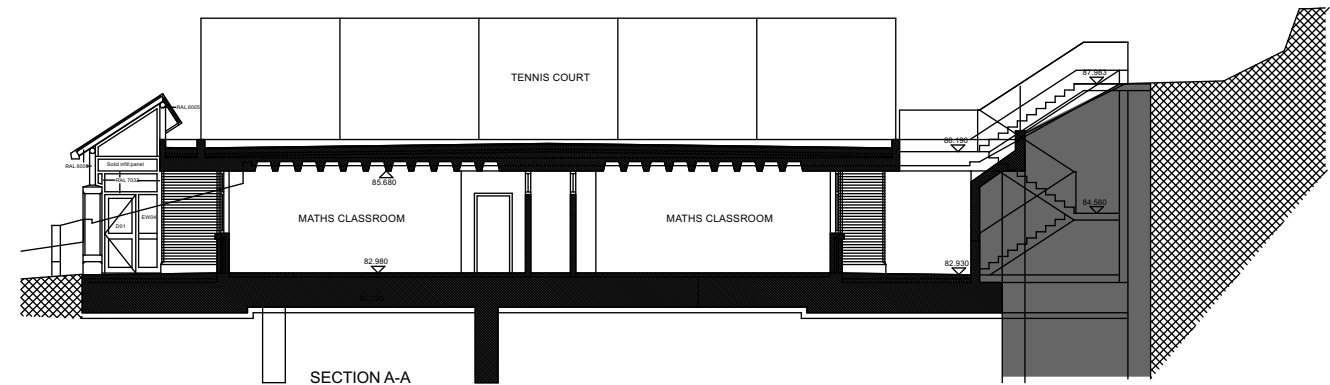


WEST ELEVATION

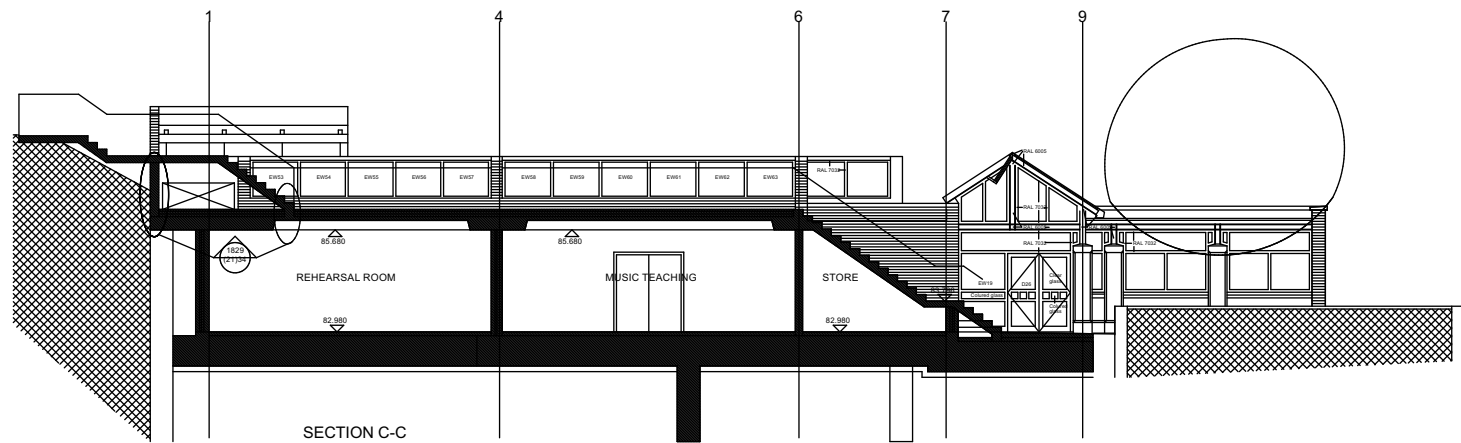
Amendments post original construction shown in red



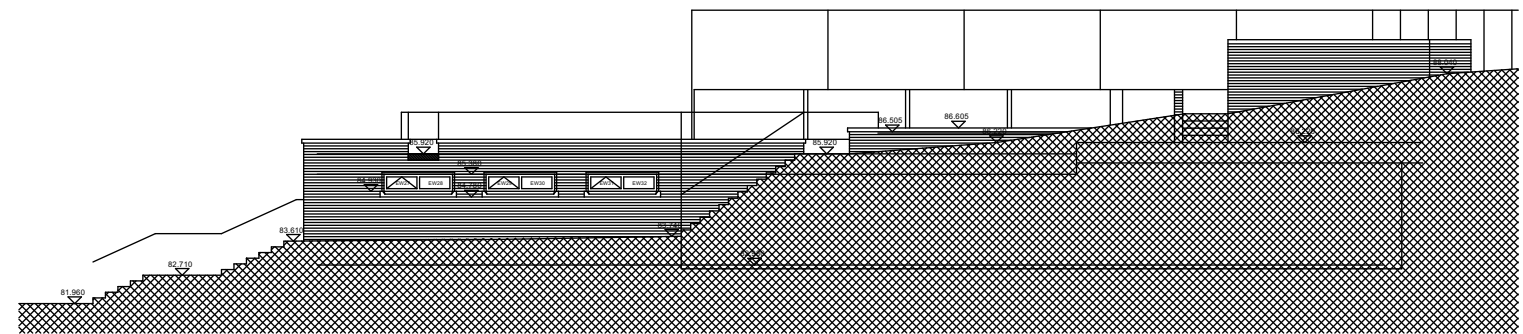
SECTION G-G



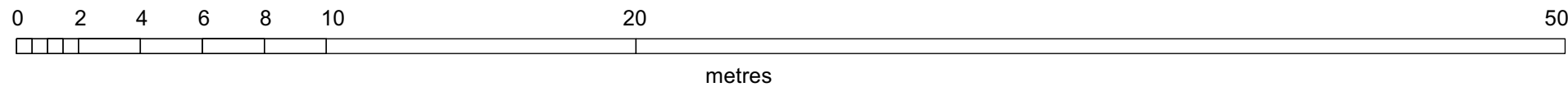
SECTION A-A



SECTION C-C



SOUTH ELEVATION



From original record drawings by Ian King Architects dated March 1993

ed toovey architects

studio 401 royle building
31 wenlock road
london n1 7sh
07880 725763
edtoovey@yahoo.co.uk

Revisions:

PLANNING ISSUE

- Always take site measurements to verify dimensions
- Refer to M&E Engineers drawings for all services

University College School : Project 200 East development

Existing GS Wing survey - sections_elevations Drwg No. 2037 / GA / 004 -

May 2021

Scale 1:200 @ A3