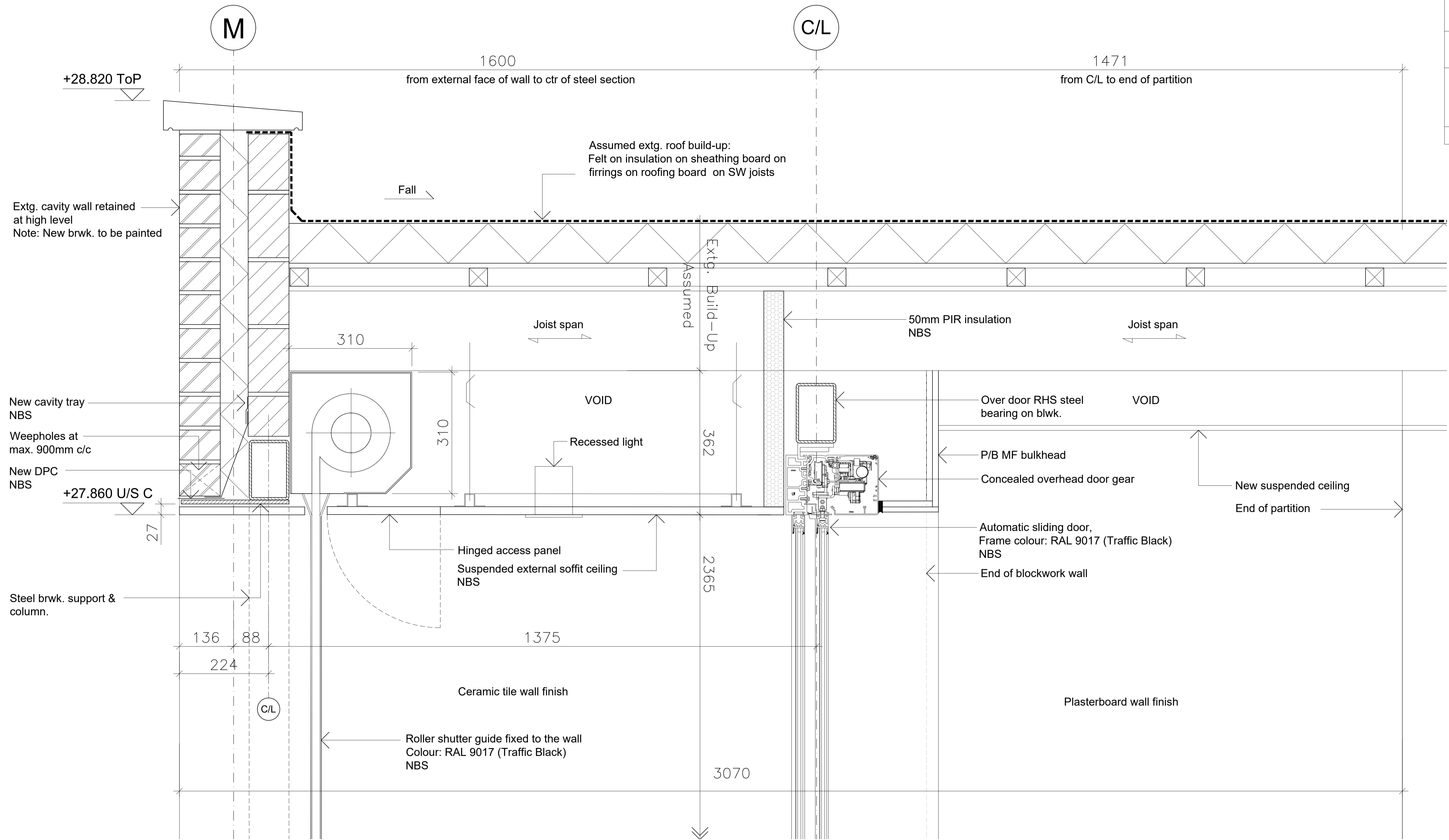


SAFETY, HEALTH & ENVIRONMENT INFORMATION
The risks noted below are in addition to the risks normally associated with the type of work detailed on this drawing
CONSTRUCTION: FBM-01 Gymnasium Changing Rooms and Link Corridor Asbestos removal FBM-02 Gymnasium Changing Rooms Rooflights Asbestos removal FBM-05 Demolition of Multi-Use Space External wall FBM-06 Demolition of Multi-Use Space Ground floor slab
OPERATIONS:
MAINTENANCE:
The above risks are listed in the FBM Design Risk Register which should be read in conjunction with this drawing.

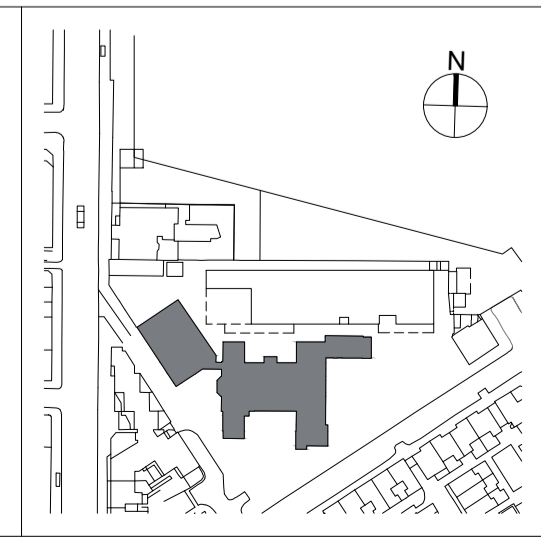


01 DETAILED SECTION 01
1:5

C01	First issue	MS xx	JSN xx	APB xx	<p>HS2 accepts no responsibility for any circumstances which arise from the reproduction of this document after alteration, amendment or abbreviation or if it is issued in part or issued incompletely in any way.</p> <p>© Crown Copyright and database right 2020. All rights reserved. Ordnance Survey Licence number 100049190</p> <p>© Crown Copyright material is reproduced with the permission of Land Registry under delegated authority from the Controller of HMSO.</p> <p>This material was last updated on 2020 and may not be copied, distributed, sold or published without the formal permission of Land Registry. Only an official copy of a title plan or register obtained from the Land Registry may be used for legal or other official purposes.</p>
Rev	Description	Drawn	Checked	Approved	Con Acc

Legends/Notes:

Scale with caution as distortion can occur.



HS2

Registered in England
Registration No. 06791686
Registered office:
2 Snow Hill, Queensway,
Birmingham, B4 6GA

Official

Stage 4	Project/Contract 1CP01	Creator/Originator MDS	Sub Originator FBM
Drawing Title SS08	Work Package Description SL23	Discipline/Function AR	System description DDE
Drawn by MS	Checked by JSN	Approved by APB	Date xx
Scale 1:5	Size A1	Suitability S6	Rev. C01
Drawing No. 1CP01-MDS_FBM-AR-DDE-SS08_SL23-000060			