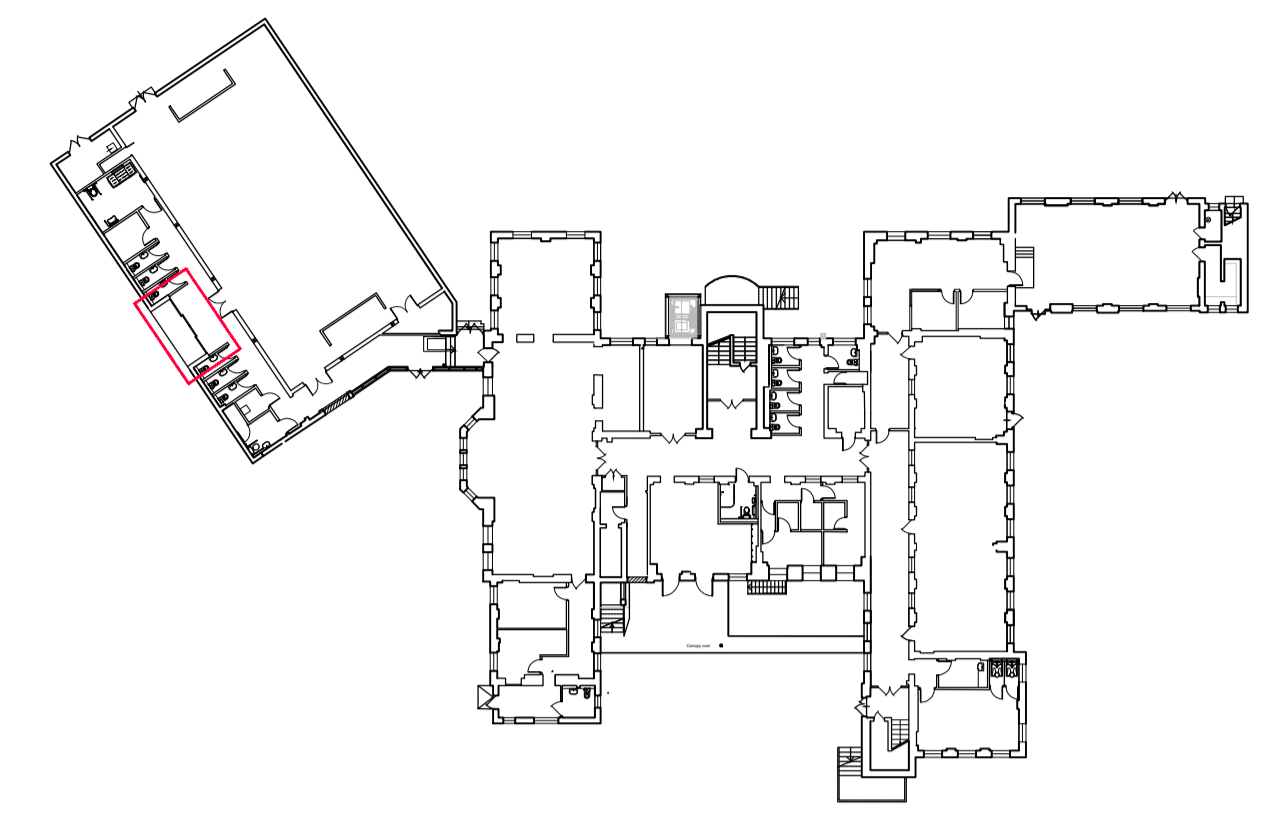
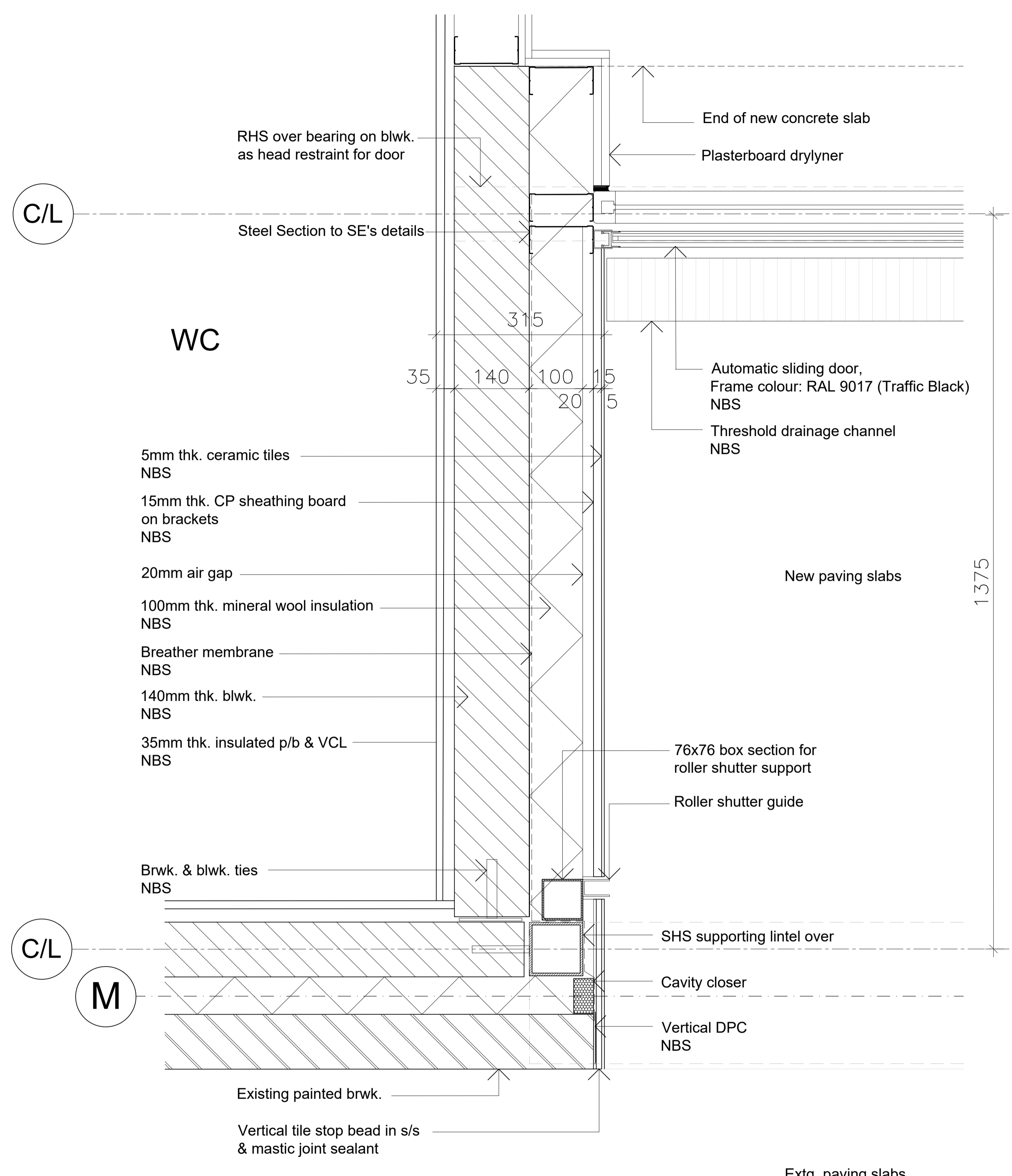


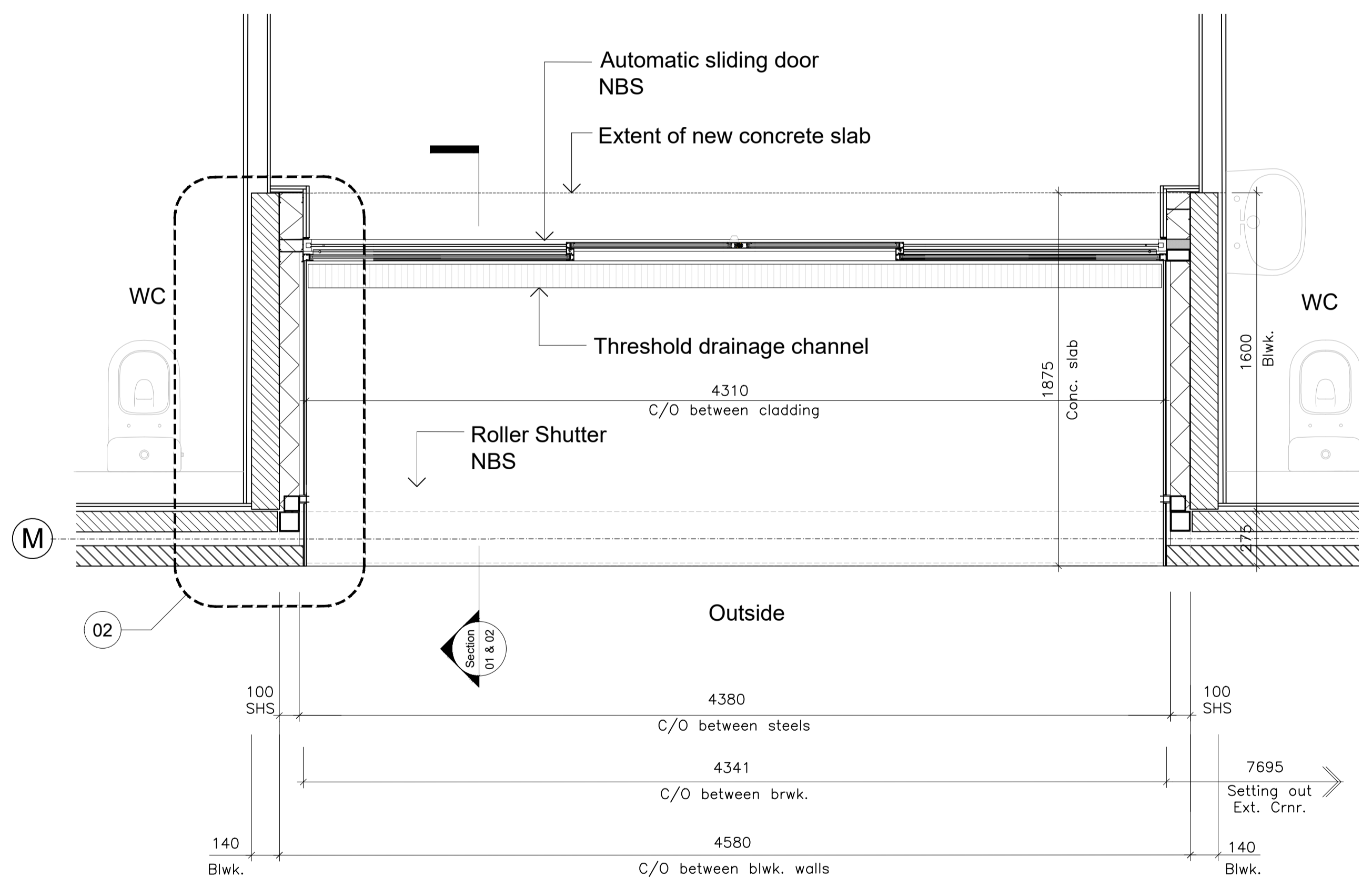
SAFETY, HEALTH & ENVIRONMENT INFORMATION	
The risks noted below are in addition to the risks normally associated with the type of work detailed on this drawing	
<b>CONSTRUCTION:</b> FBM-01 Gymnasium Changing Rooms and Link Corridor Asbestos removal FBM-02 Gymnasium Changing Rooms Rooflights Asbestos removal FBM-05 Demolition of Multi-Use Space External wall FBM-06 Demolition of Multi-Use Space Ground floor slab	
OPERATIONS:	
MAINTENANCE:	
The above risks are listed in the FBM Design Risk Register which should be read in conjunction with this drawing.	



00 Key Plan  
1:500



02 DETAIL PLAN  
1:5



01 COMMUNITY HALL NEW ENTRANCE DETAILED PLAN  
1:20

C01	First issue	MS 22/09/23	JSN 22/09/23	APB 22/09/23	HS2 accepts no responsibility for any circumstances which arise from the reproduction of this document after alteration, amendment or abbreviation or if it is issued in part or issued incompletely in any way.  © Crown Copyright and database right 2020. All rights reserved. Ordnance Survey Licence number 100049190  © Crown Copyright material is reproduced with the permission of Land Registry under delegated authority from the Controller of HMSO.  This material was last updated on 2020 and may not be copied, distributed, sold or published without the formal permission of Land Registry. Only an official copy of a title plan or register obtained from the Land Registry may be used for legal or other official purposes.
Rev	Description	Drawn	Checked	Approved	Con Acc

Legends/Notes:

Official

Registered in England  
 Registration No. 06791686  
 Registered office:  
 2 Snow Hill, Queensway,  
 Birmingham, B4 6GA

Stage 4	Project/Contract 1CP01	Creator/Originator MDS	Sub Originator FBM
Drawing Title SS08	Work Package Description SL23	Discipline/Function AR	System description DDE
Drawing Title Proposed Community Hall Entrance Details (Sheet 1)	Drawn by MS	Checked by JSN	Approved by APB
	Scale Varies	Size A1	Suitability S6
		Date xxxx	Rev. C01
Drawing No. 1CP01-MDS_FBM-AR-DDE-SS08_SL23-000059			