

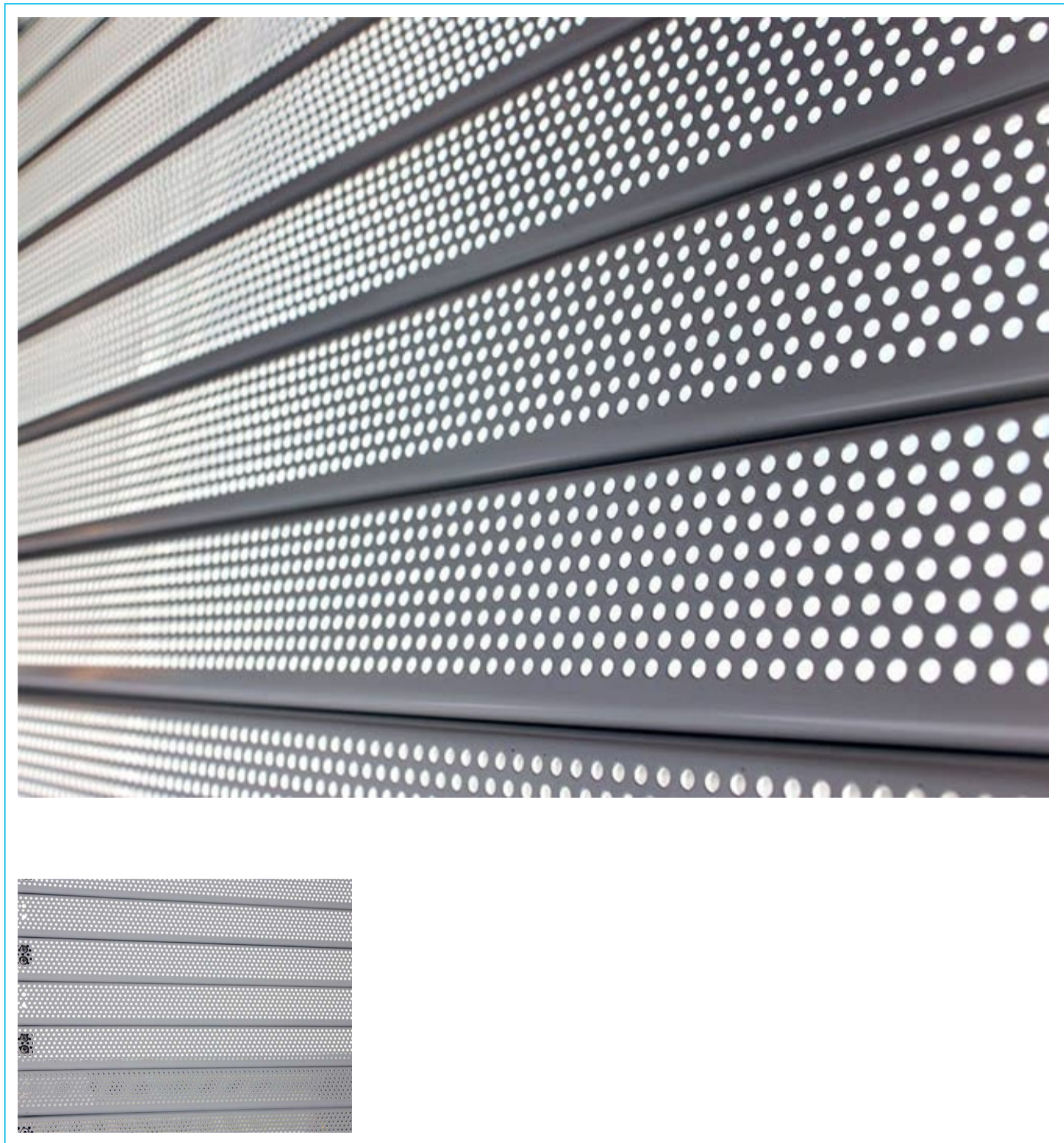
# Armourguard Through Vision Shutters **Model P1**

Technical Specifications



<https://www.hag.co.uk>  
Advice Line 0800 072 3444

# Armourguard Through Vision Shutters Model P1



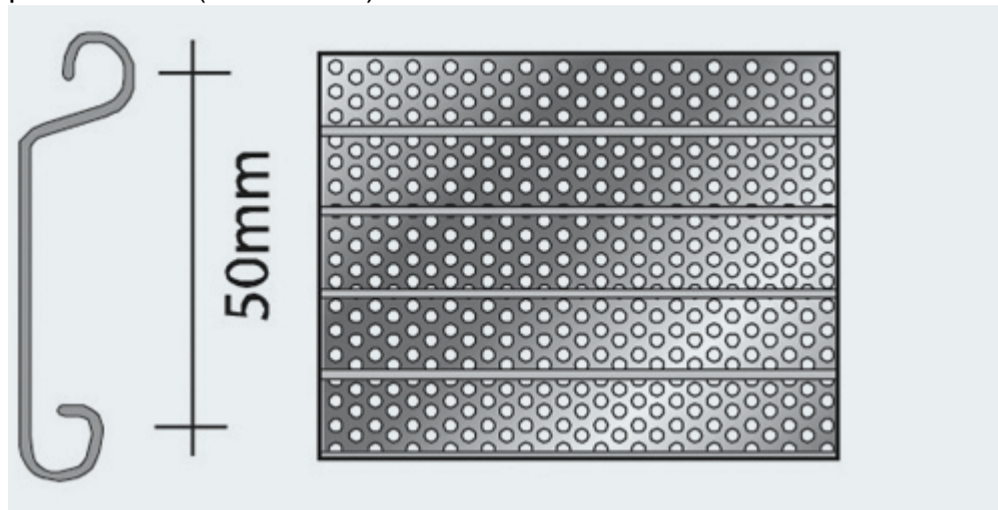
The Model P1 steel security shutters provides 30% through vision and a degree of ventilation via 3 mm perforations throughout each 0.9 mm thick galvanised steel section. Offers a medium level of security. Manual or electric operation depending on specification. Recommended maximum width 3500 mm.

## Product Overview

### Description

# Armourguard Through Vision Shutters Model P1

The Armourguard P1 security shutters are constructed from 50mm flat, galvanised 20 gauge lath with 3mm perforations. (30% Vision)



## Common use

Kiosk, bars and shop fronts security shutters where vision or ventilation is required

## Maximum Width

3500mm

## Dimensions

Normally 50mm x 0.91mm

## Weight

13kg per square metre

## Finish

Galvanised bright rolled mild steel, polyester powder coat colours are available.

## Shutter Box Specification

### Construction

0.91mm bright spangle galvanised pressed steel coil casing available in various different designs to suit individual circumstances.

### Box sizes

Overall height (top of box)

Up to 2050mm box size 254mm

Up to 2800mm box size 305mm

Up to 3500mm box size 355mm

### Finish

Galvanised steel standard polyester powder coat colours are available at an additional cost.

## Guide Rail Specification

### Construction

Standard guide rails: 38mm x 32mm x 3mm – 67mm x 32mm x 3mm dependant on width. Electric shutters require a 50mm x 50mm steel box section (both sides) used to allow for motor unit and safety brake.

### Finish

Galvanised steel standard polyester powder coat colours are available.

## Operational Specification

# Armourguard Through Vision Shutters **Model P1**

## **Spring Loaded**

A counter balanced spring ensures controlled raising and lowering with a key lock in-built at the bottom of the shutter for security.

## **Single Phase Electric**

A tubular motor within the barrel assembly with limit switches and thermal cut out to prevent overheating. Draw 240 volts and 0.5 – 2.5 amps dependant upon the shutter size. Provision of a 13 amp fused spur is required for installation.

## **Override**

A manual override is included to operate the shutter in the event of a power failure. This is usually only Operable from only one side.

## **Control**

Standard security key switch or rocker switch. Other controls are available on request.

---

**Product specification may change and it is advisable to consult with HAG technical advisors before specifying or ordering. HAG operates a policy of continuous improvement.**

---

