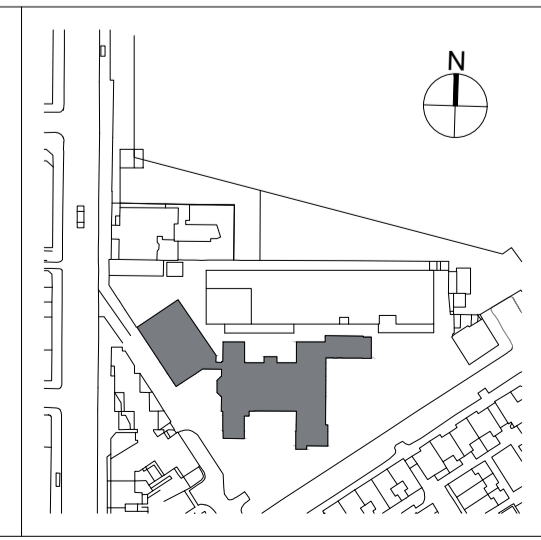


**01** EXISTING SECOND MEZZANINE FLOOR  
1:100

C01	First issue	GR	JSN	APB	20/04/22	20/04/22	20/04/22	HS2 accepts no responsibility for any circumstances which arise from the reproduction of this document after alteration, amendment or abbreviation or if it is issued in part or issued incompletely in any way.
C02	Window nos updated Grid added	MS	JSN	APB	12/09/23	12/09/23	12/09/23	© Crown Copyright and database right 2020. All rights reserved. Ordnance Survey Licence number 100049190
								© Crown Copyright material is reproduced with the permission of Land Registry under delegated authority from the Controller of HMSO. This material was last updated on 2020 and may not be copied, distributed, sold or published without the formal permission of Land Registry. Only an official copy of a title plan or register obtained from the Land Registry may be used for legal or other official purposes.
Rev	Description	Drawn	Checked	Approved	Con Acc	Scale with caution as distortion can occur.		

Legends/Notes:



**HS2**

Registered in England  
Registration No. 06791686  
Registered office:  
2 Snow Hill, Queensway,  
Birmingham, B4 6GA

Official

Stage	3	Project/Contract	1CP01	Creator/Originator	MDS	Sub Originator	FBM
Drawing Title	SS08	Work Package Description	SL23	Discipline/Function	AR	System description	DPL
Drawing Title	Existing Second Mezzanine Floor Plan			Drawn by	GR	Checked by	JSN
		Approved by	APB	Date	20/04/22		
	Scale	1:100	Size	A1	Suitability	S1	Rev.
							C02
	Drawing No.	1CP01-MDS_FBM-AR-DPL-SS08_SL23_M2-00001					