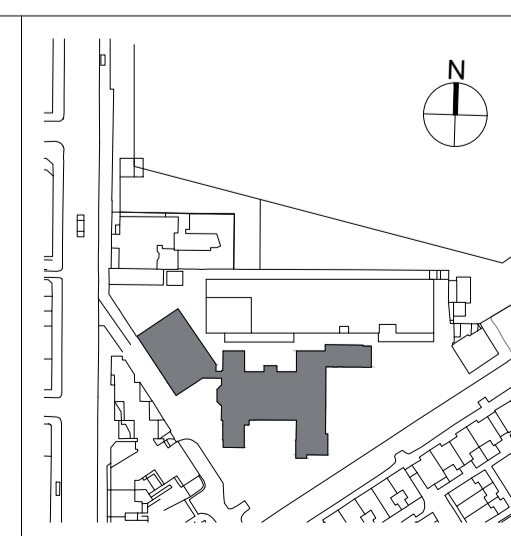




01 PROPOSED COMMUNITY HALL ELEVATION
1:100

| | | | | | | |
|-----|---------------------|----------------|-----------------|-----------------|---|---|
| C01 | Issued for Planning | MS 12/10/23 | JSN 22/09/23 | APB 12/10/23 | HS2 accepts no responsibility for any circumstances which arise from the reproduction of this document after alteration, amendment or abbreviation or if it is issued in part or issued incompletely in any way. | |
| C02 | Issued for Planning | MS 20/10/23 | JSN 20/10/23 | APB 20/10/23 | © Crown Copyright and database right 2020. All rights reserved. Ordnance Survey Licence number 100049190 | |
| | | | | | © Crown Copyright material is reproduced with the permission of Land Registry under delegated authority from the Controller of HMSO. This material was last updated on 2020 and may not be copied, distributed, sold or published without the formal permission of Land Registry. Only an official copy of a title plan or register obtained from the Land Registry may be used for legal or other official purposes. | |
| Rev | Description | Drawn | Checked | Approved | Con Acc | Scale with caution as distortion can occur. |

Legends/Notes:



HS2

Registered in England
Registration No. 06791686
Registered office:
2 Snow Hill, Queensway,
Birmingham, B4 6GA

Official

| | | | | | | | |
|---------------|---|--------------------------|---------------------------------------|---------------------|----------|--------------------|-------|
| Stage | 3 | Project/Contract | 1CP01 | Creator/Originator | MDS | Sub Originator | FBM |
| Drawing Title | SS08 | Work Package Description | SL23 | Discipline/Function | AR | System description | DEL |
| Drawing Title | Proposed Community Hall West Elevation | | | Drawn by | MS | Checked by | JSN |
| | | Approved by | APB | Date | 12/10/23 | Scale | 1:100 |
| | | Size | A1 | Suitability | S6 | Rev. | C02 |
| | | Drawing No. | 1CP01-MDS_FBM-AR-DEL-SS08_SL23-000018 | | | | |