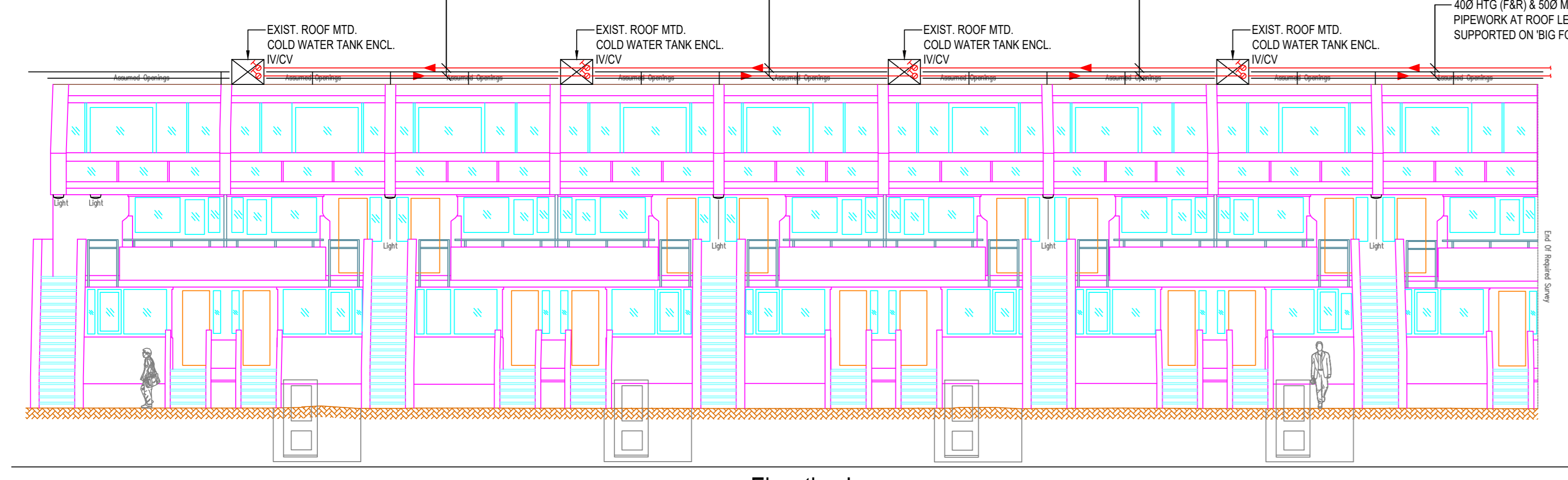
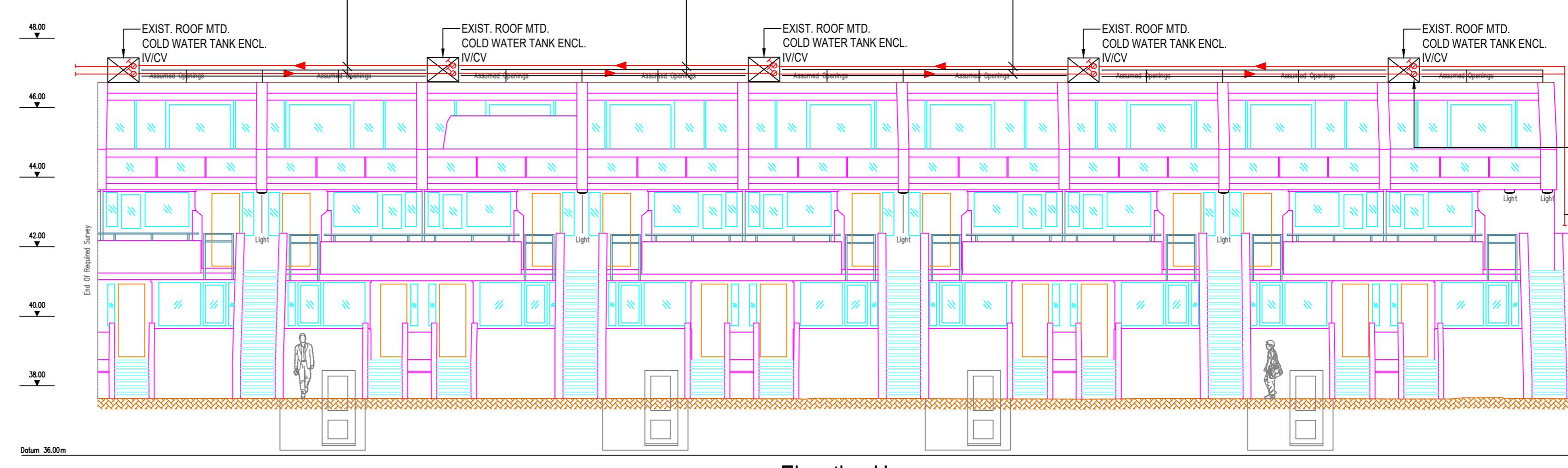


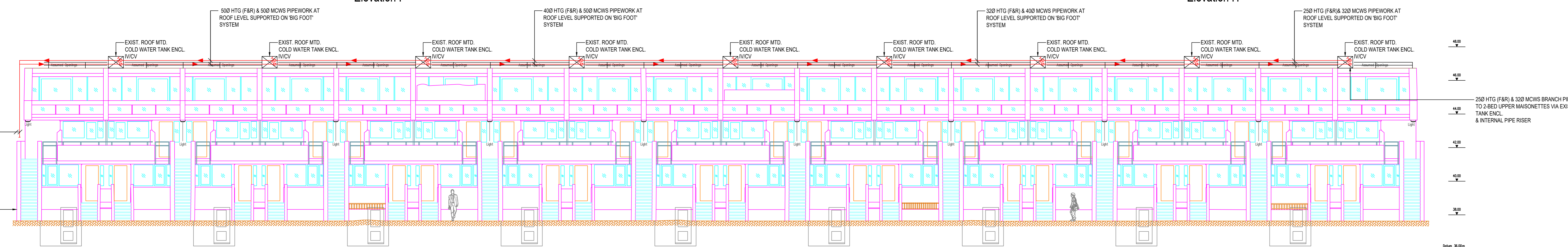
- NOTES
 1. FOR STANDARD DRAWING NOTES & LEGEND PLEASE REFER TO DRAWING NO. 3547-RW-M-001
 2. ALL PIPEWORK FULLY INSULATED AND WEATHER PROTECTED WITH P.I.B. AND STUCCO ALUMINUM CLADDING.
DRAWING LEGEND
 - - - - - EXISTING GAS SERVICE PIPE
 - - - - - NEW MAINS WATER PIPE
 - - - - - NEW HEATING FLOW & RETURN PIPE



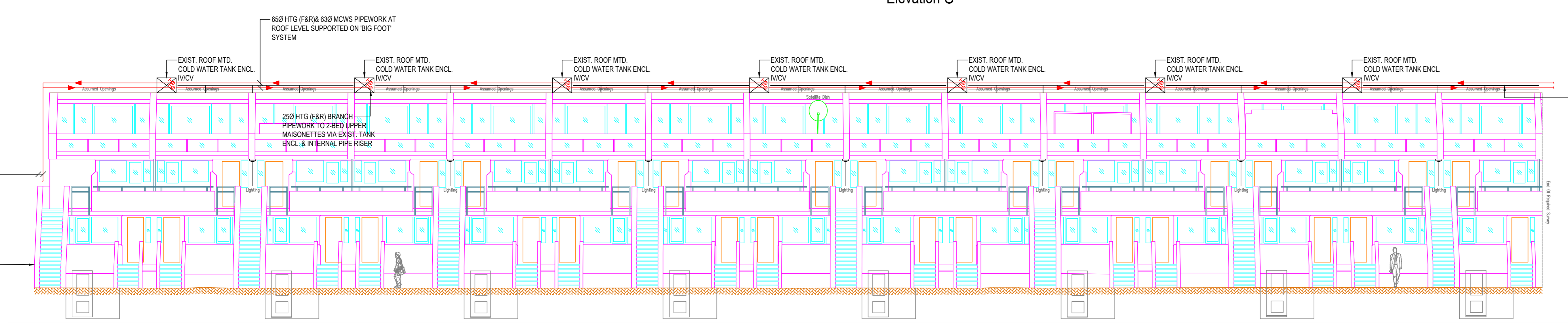
Elevation I



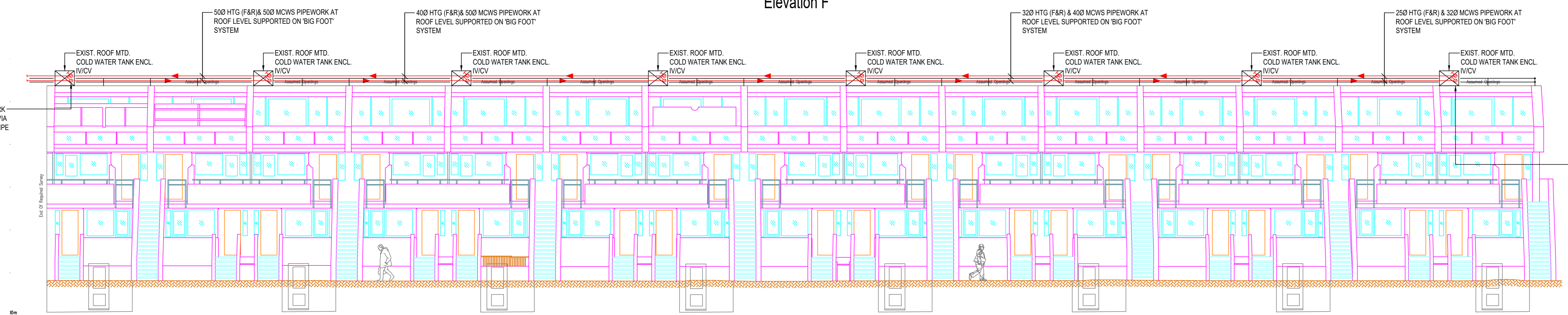
Elevation H



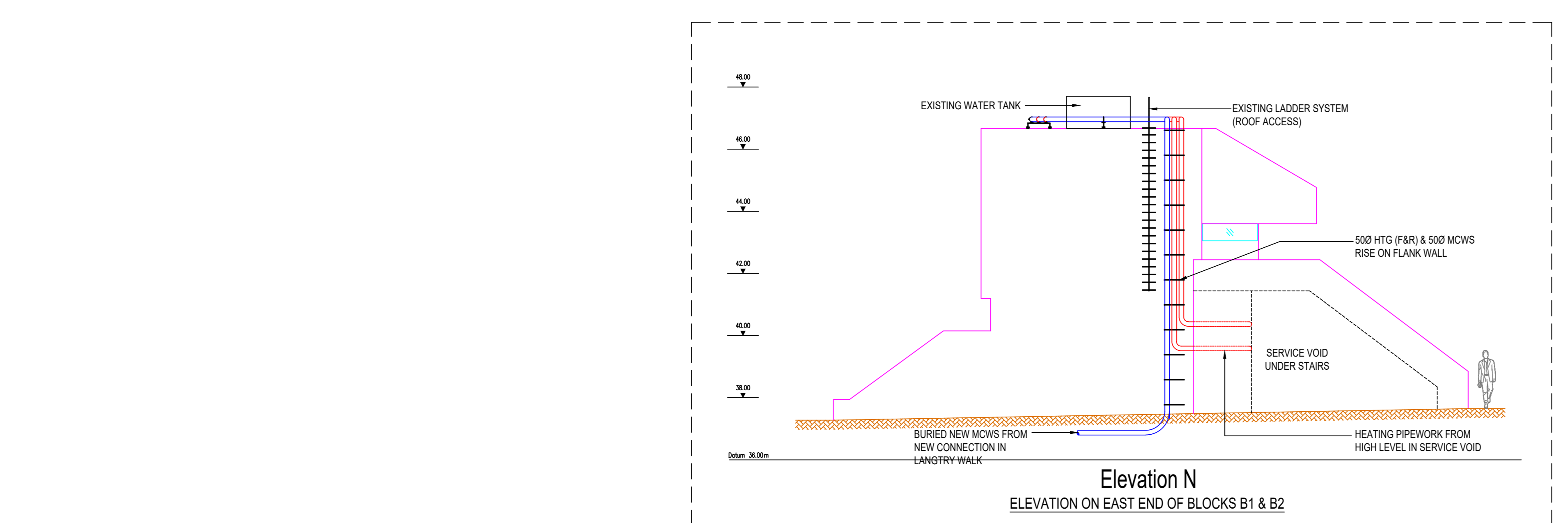
Elevation G



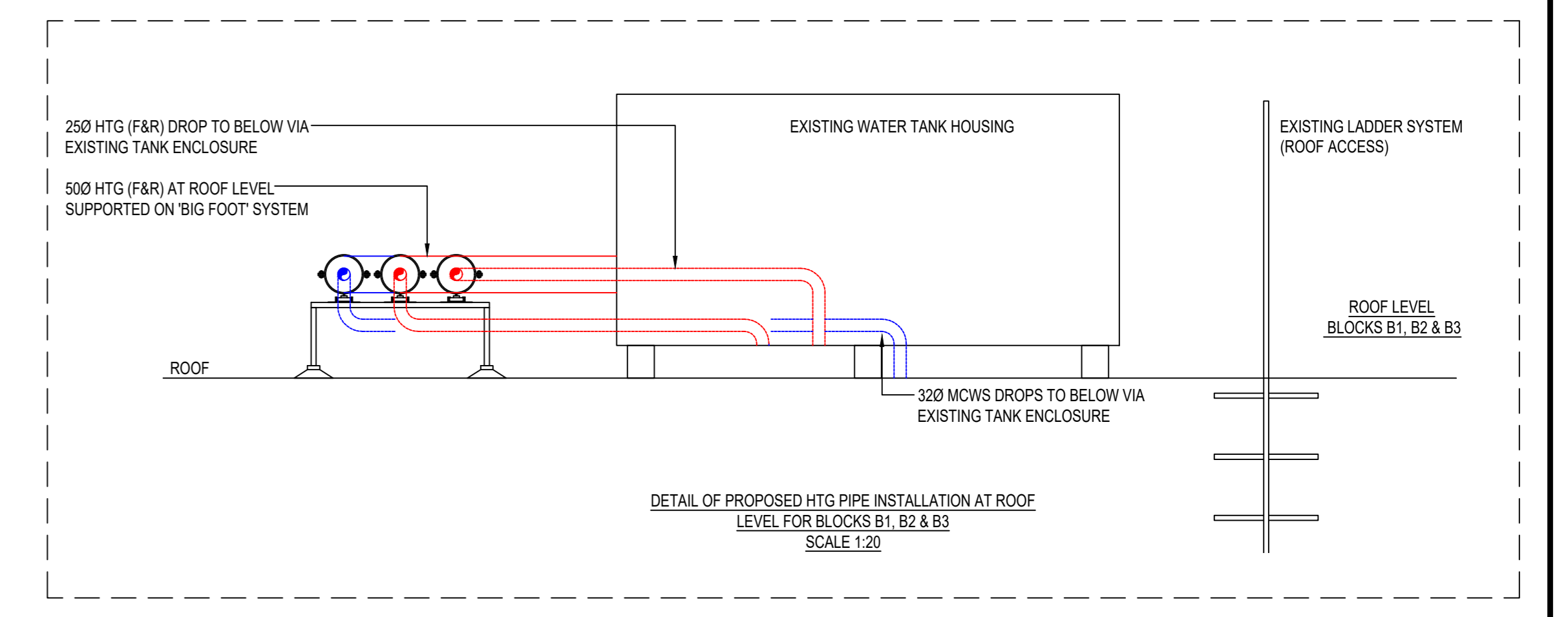
Elevation F



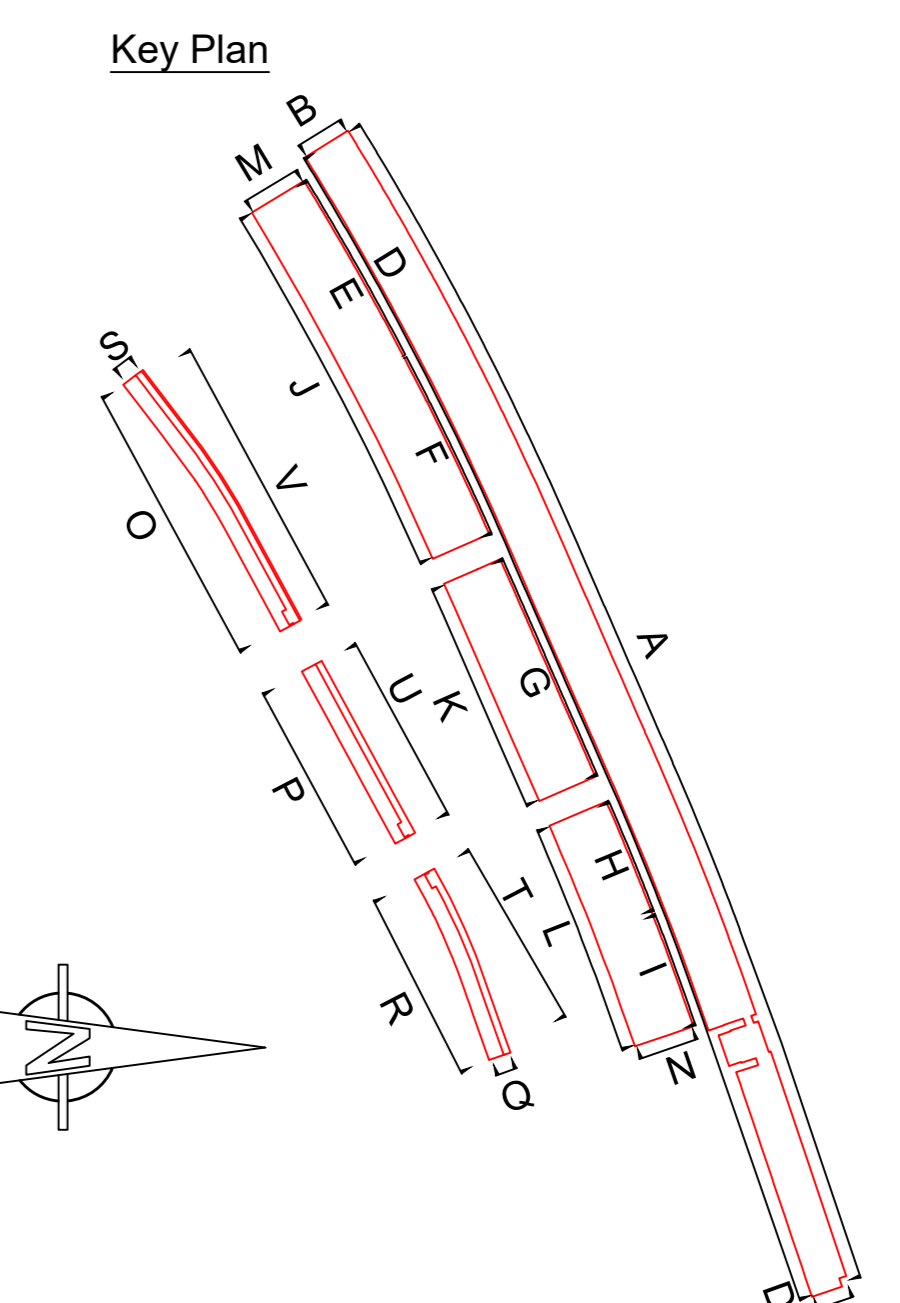
Elevation E



Elevation N
ELEVATION ON EAST END OF BLOCKS B1 & B2



250 HTG (F&R) & 320 MCWS BRANCH PIPEWORK TO 2-BED UPPER MAISONNETTES VIA EXIST. TANK ENCL. & INTERNAL PIPE RISER



Key Plan

| | | | | |
|-----|------------------------|-----|-----|----------|
| C | AMENDED TO LB COMMENTS | NS | DM | 16.03.20 |
| B | NOTES ADDED | NS | DM | 22.01.20 |
| REV | AMENDMENT | DRN | CHK | DATE |

Camden
 ARGYLE STREET
 LONDON
 WC1H 8NJ

BYA BUTLER & YOUNG ASSOCIATES

Mechanical and Electrical Consulting Engineers
 1st Floor, 54-62 Station Road East, Oxley, Surrey RH8 0PG
 Telephone 01883 717172 Fax 01883 717174
 Website www.bya.co.uk Email enquiries@bya.co.uk

PLANNING DRAWING

Client
 ALEXANDRA ROAD ESTATE
 (ROWLEY WAY)

Drawing Title
 PROPOSED REPLACEMENT HTG & DOM WATER SERVICES PIPE ROUTE TO EXTERNAL ELEVATION OF DWELLINGS (B1-B3)

| | | | | | | | | | |
|---------|-------|--------------|---------------|-------|----|---------|----|------|--------|
| Scales | 1:100 | Xref | - | Drawn | NS | Checked | JS | Date | NOV 23 |
| BYA Ref | 3547 | Drawn Number | 3547-RW-M-534 | REV | | | | | |

DOES NOT APPLY TO ELEVATION N
 EXTERNAL NEW INSTALLATIONS TO
 INTERMEDIATE FLANK WALLS ONLY