

**Job No. 527**

8 Hermit Place, London NW6 4BZ

Application : Non-Material Amendment

Ref: PP-12655599



Design & Planning Statement

Issue: 1 (6.12.23)

## **1. Introduction**

Alan Power Architects Ltd have been appointed by the applicant Castle Trading Ltd to submit this application for a minor amendment to the current planning approval ref. 2022/1044/P.

## **2. Application Drawings**

The application comprises of the following drawings:

527 – 300 Rev B	Proposed Plans
527 – 305 Rev B	Proposed Front (South-West) Elevation
527 – 309	Proposed Materials

## **3. Proposal**

It is proposed to amend the internal layout on the ground floor to improve the living, dining and kitchen area with a provision for a study area within the living area, with the dining area located within the kitchen area.

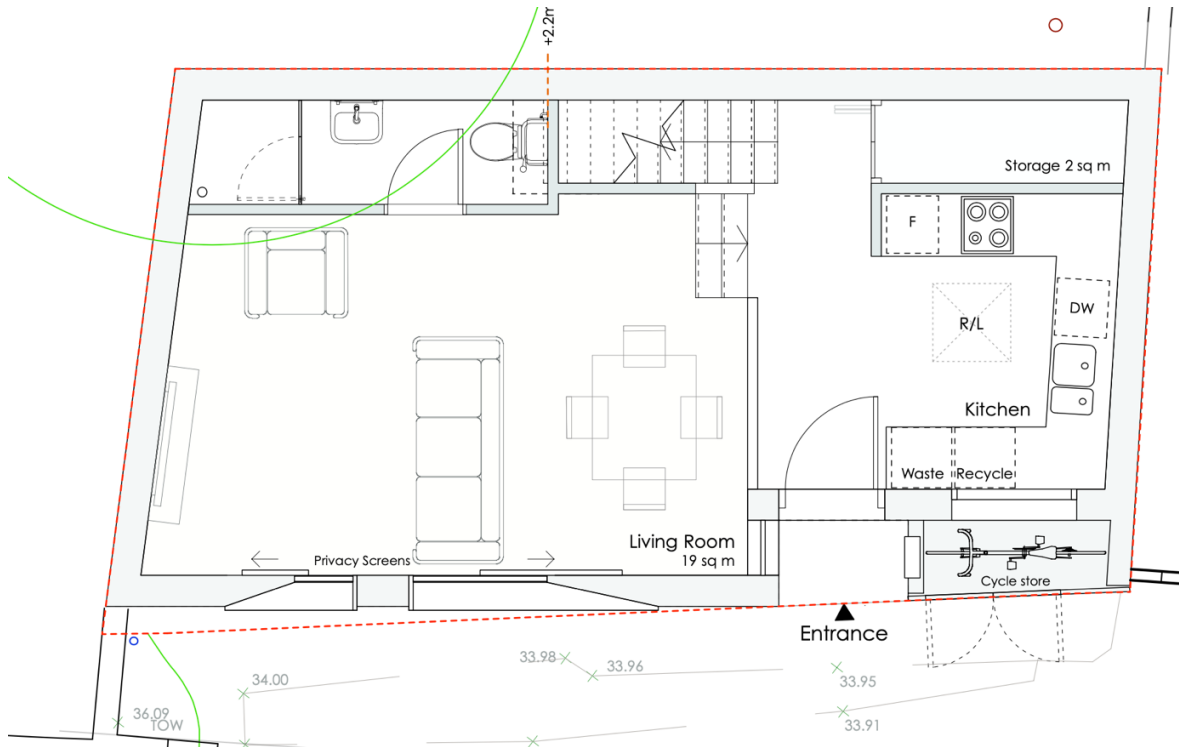
This will provide the future occupants with a space to working from home or study.

As a consequence the internal layout, the window setting out is also amended to suit with slightly wider windows and they are reposition slightly to the east and the rooflight over the kitchen / dining area enlarged.

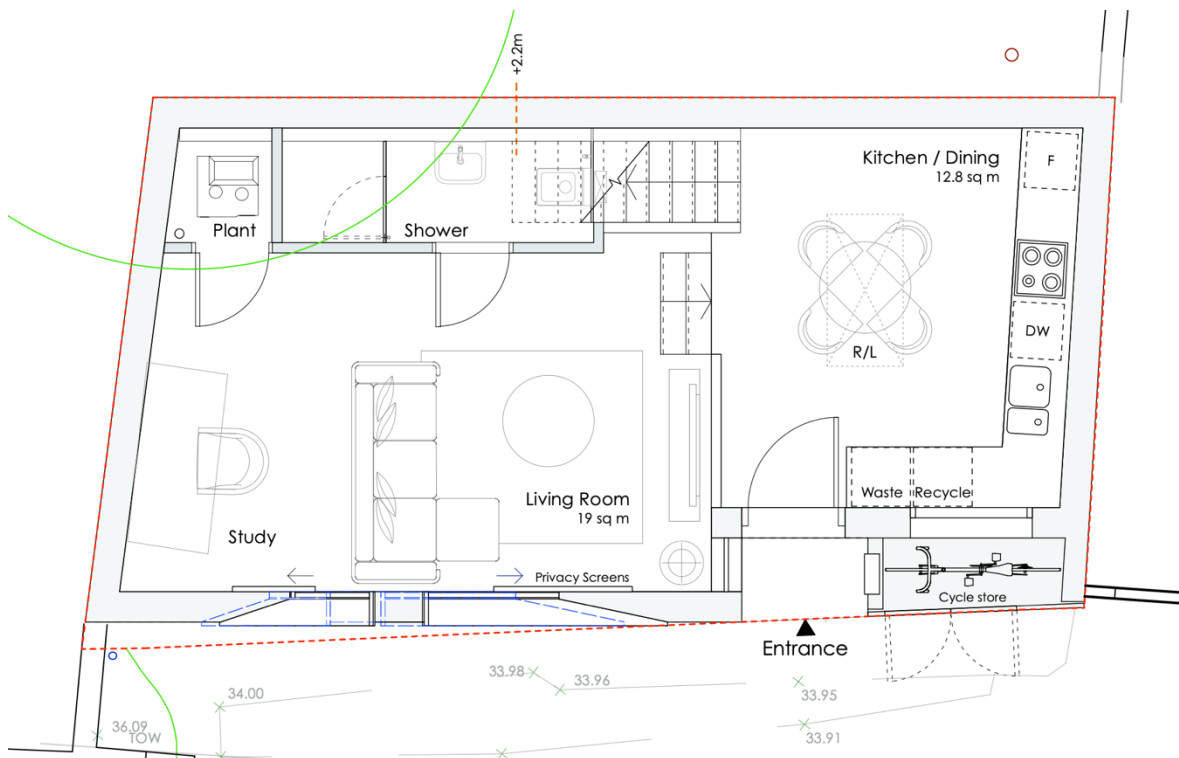
In addition to the above the applicant submits some photographic samples of the proposed materials, as it is intended to substitute the contrasting vertical stack bonded feature brickwork as indicated on the approved front elevation drawing with similar sized brick shaped ceramic tiles in a stack bonded configuration.

The proposed amendments are illustrated below, and we trust that the local authority will agree that these are minor in nature.

Please do not hesitate to contact us should you have any queries or require any further information.



1. Extract from the current approved ground floor plan drawing DRG No. 527-300 Rev A



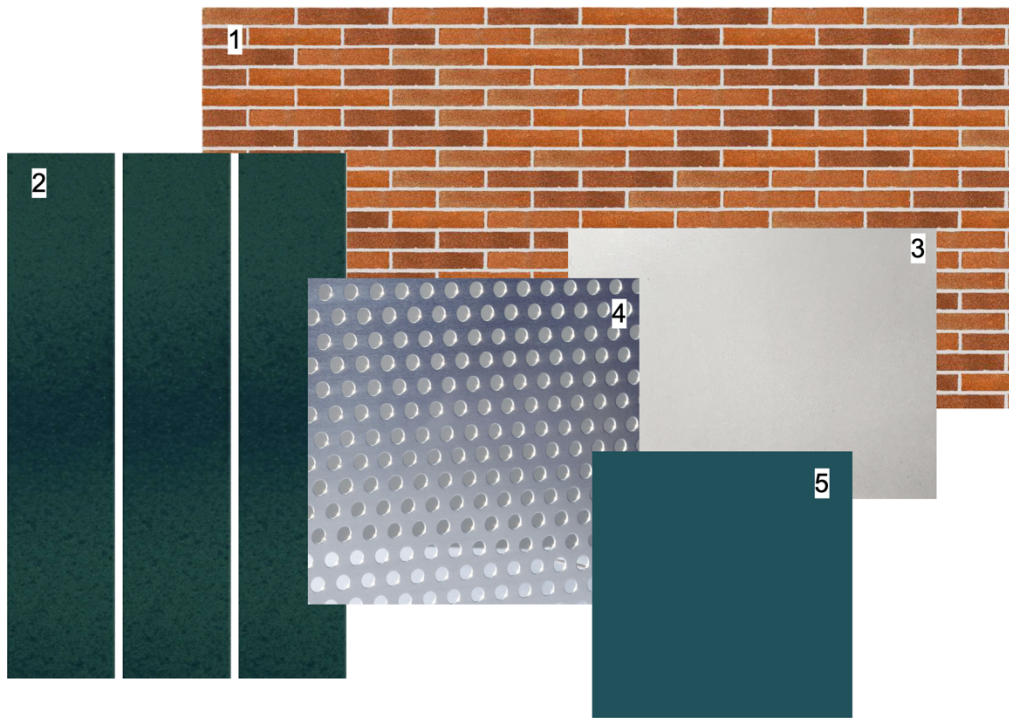
2. Extract from the proposed ground floor plan drawing DRG No. 527-300 Rev B illustrating the proposed internal layout changes.



3. Extract from the current approved South-West Elevation drawing DRG No. 527-305 Rev A



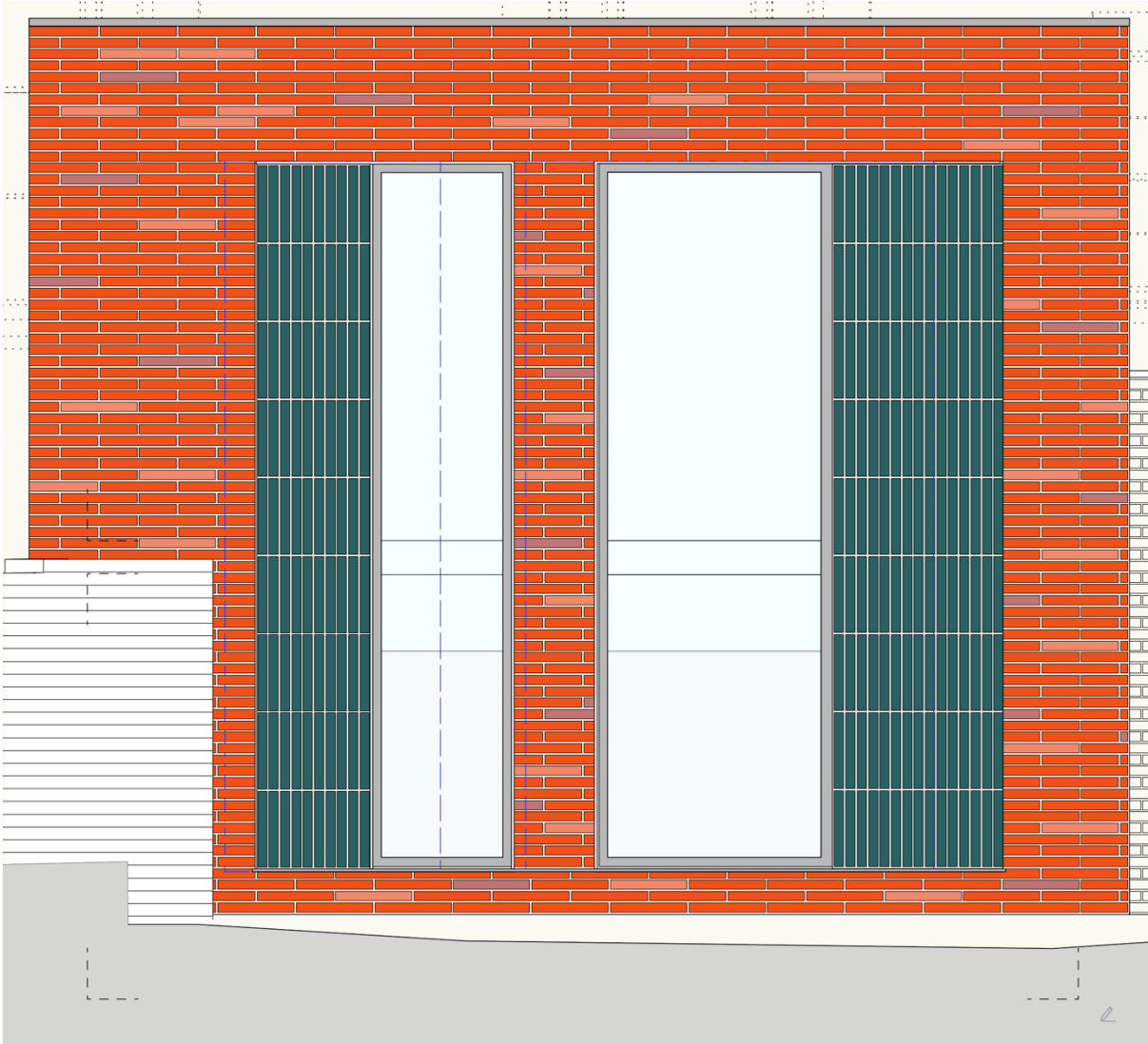
4. Extract from the proposed South-West Elevation drawing DRG No. 527-305 Rev B



**KEY**

- 1 Roman brick
- 2 Ceramic tiles
- 3 Translucent glass sliding screens (internal)
- 4 Perforated metal screens
- 5 Powder coated finishes RAL 5020

5. Extract from the Proposed Material drawing DRG No. 527-309



6. South-West Elevation coloured to demonstrate the proposed materials; Roman brickwork and vertical stack bonded ceramic tiled feature to the windows.