

46.55

ROOF  
39.23

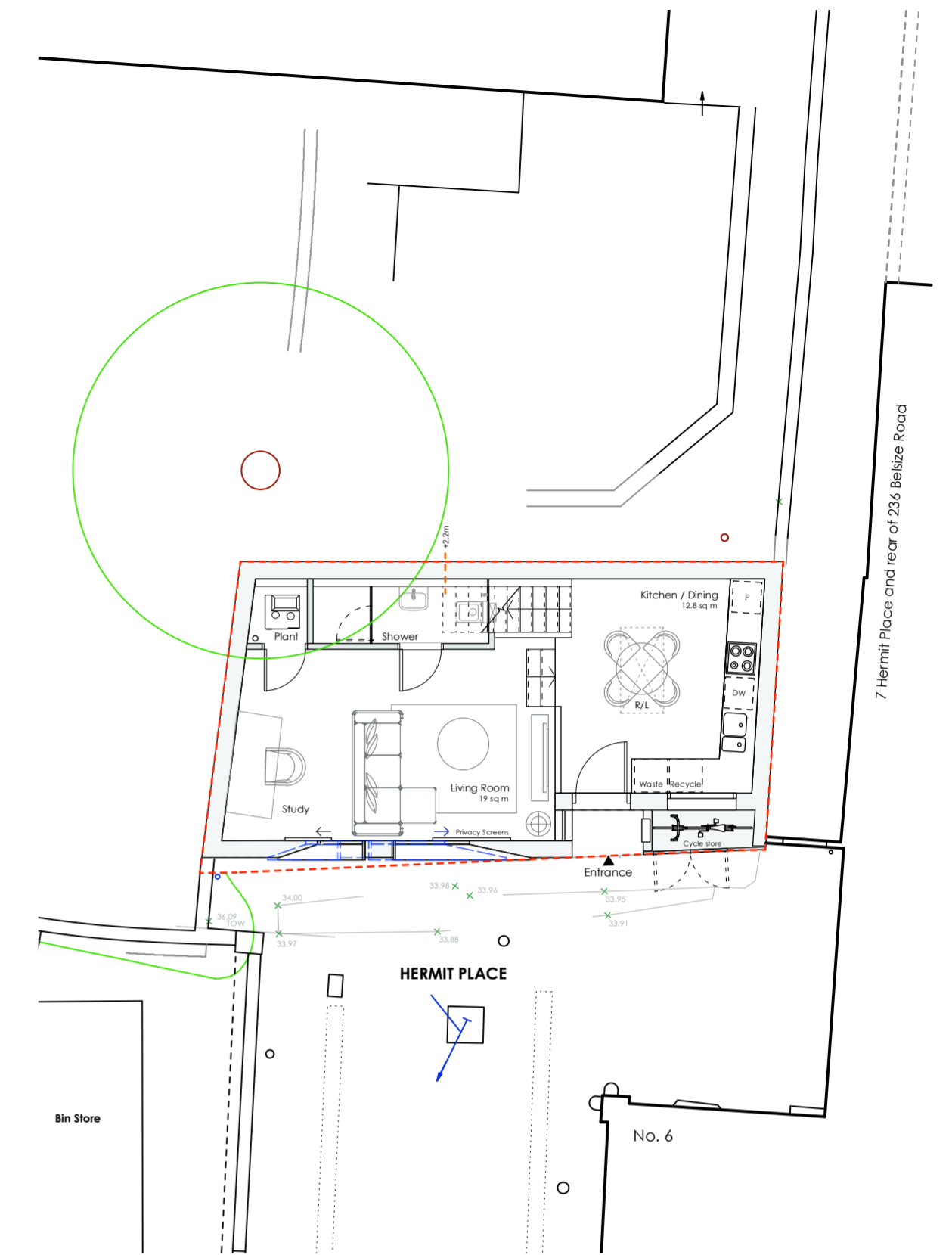
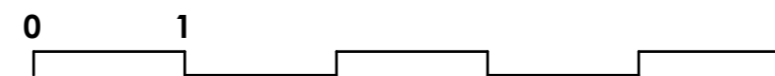
Mezz  
36.20

GF  
33.50



**KEY**

- 1 Roman brick
- 2 Metal window frame
- 3 Ceramic tiles
- 4 Timber door in HW frame
- 5 Translucent glass sliding screens (internal)
- 6 Perforated metal screens



**Key**

----- Line of previously approved window location

Rev B - 4-12-2023 : - Window setting out amended and material key updated.

Rev A - 29-9-2022 : - Metal panels deleted and replaced with stack bonded brickwork  
- Internal sliding panels amended to translucent glass.

**PLANNING ISSUE 2023**

**A2** 1:50 @ A2  
1:100 @ A4

 alan power   (ARCHITECTS.) <small>Alan Power Architects Ltd 13 Needham Road London, W11 2RP Tel. 020 7229 9375 Fax. 020 7221 4172</small>	<b>DRAWING</b> PROPOSED FRONT (SOUTH-WEST) ELEVATION	<b>DRWG. N°.</b> 527/305
	<b>PROJECT</b> 8 HERMIT PLACE LONDON NW6 4BZ	<b>Rev.</b> B
	<b>CLIENT</b> EMPIRE COMMUNICATIONS LTD	<b>Scale</b> 1:50 @ A2 1:100 @ A4
		<b>Date</b> March 2022 <b>Drawn</b>

DO NOT SCALE FROM THIS DRAWING. ALL DIMENSIONS TO BE CHECKED ON SITE AND DISCREPANCIES REPORTED TO ARCHITECT