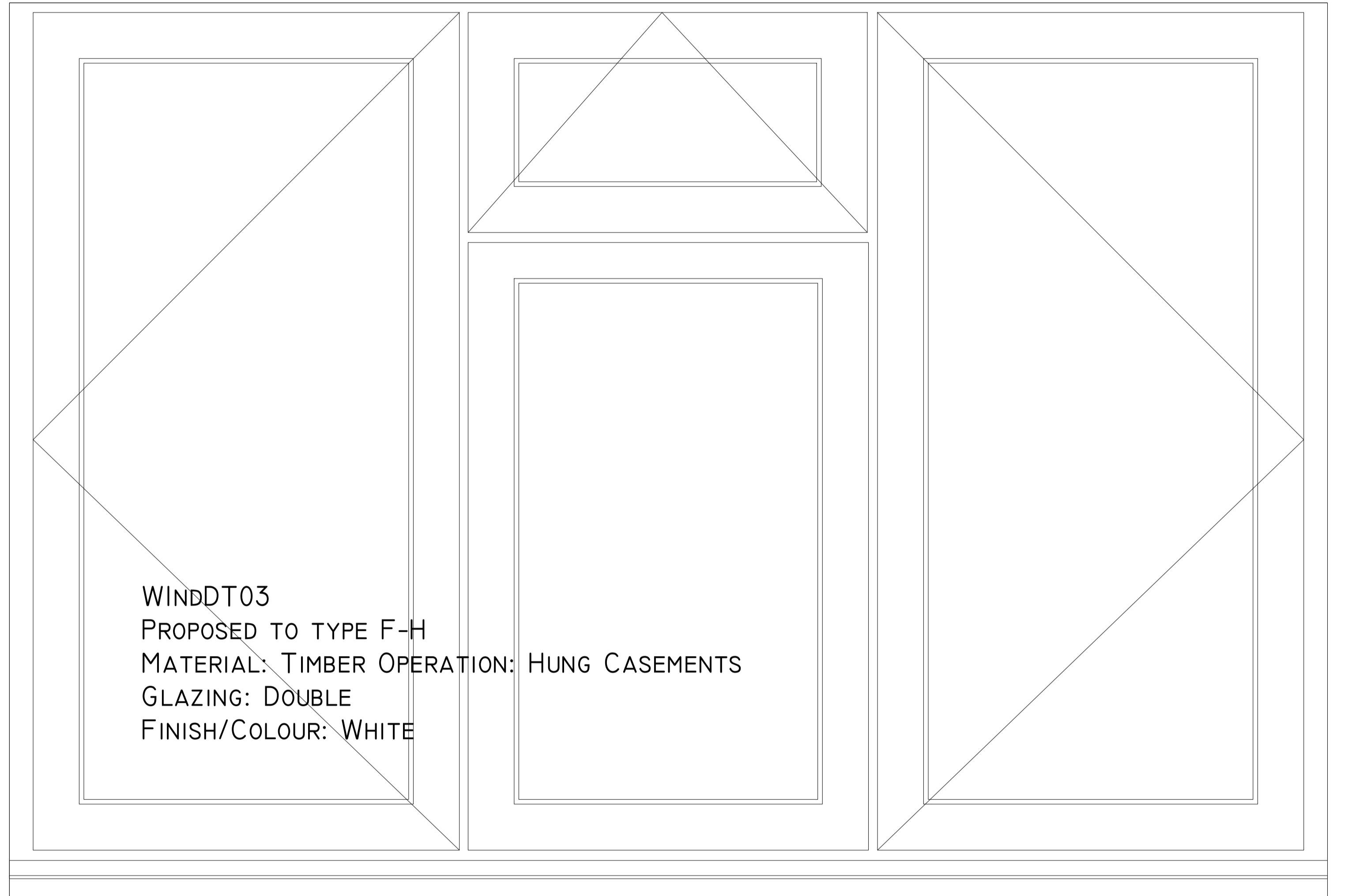
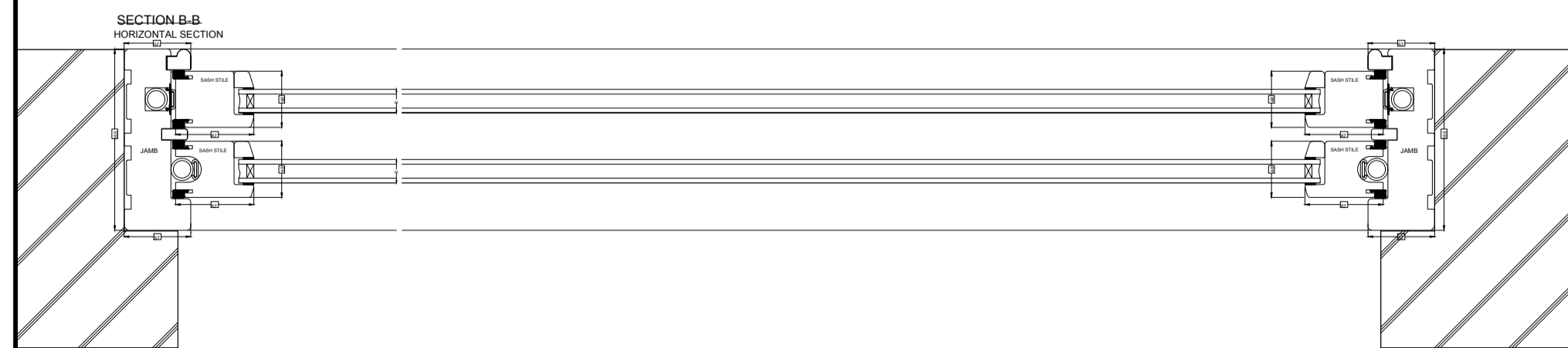
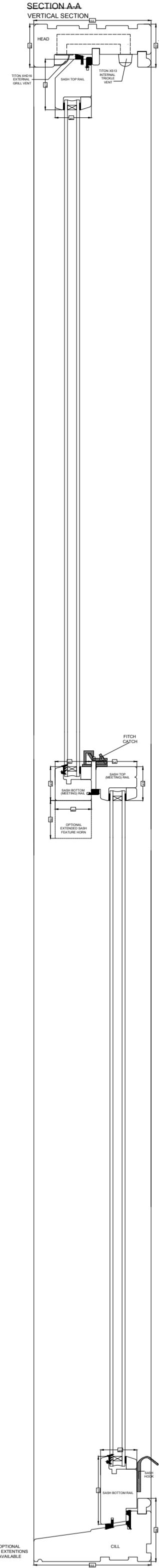
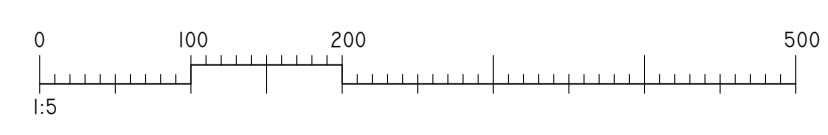
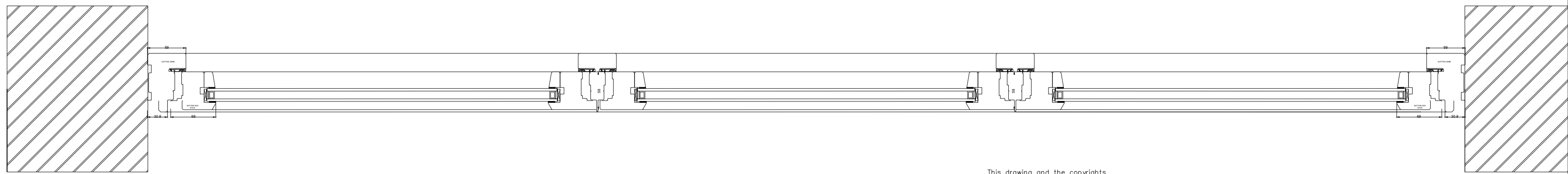
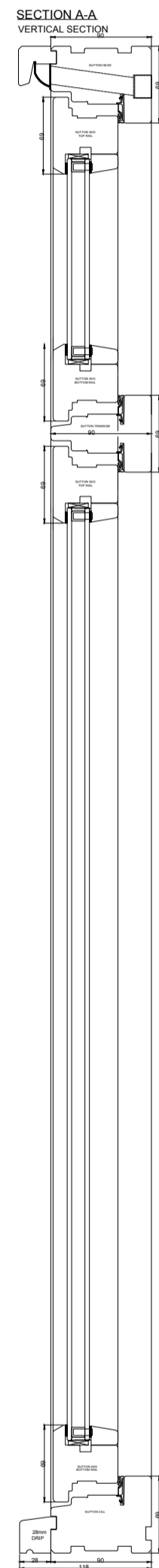


WINDT01 - WITHOUT BAR
 PROPOSED TO WINDOW TYPES A-E
 MATERIAL: TIMBER (WINDT01)
 OPERATION: SLIDING SASH
 GLAZING: DOUBLE (14MM)
 FINISH/COLOUR: WHITE



WINDDT03
 PROPOSED TO TYPE F-H
 MATERIAL: TIMBER OPERATION: HUNG CASEMENTS
 GLAZING: DOUBLE
 FINISH/COLOUR: WHITE



AI
 This drawing and the copyrights and patents therein are the property of JSM and may not be used or reproduced without consent or attribution.
 It is the responsibility to review these drawings to ensure compliance with the latest building regulations and guidance documents as well as ensure the detailed measurements are correct before undertaking works.
 No structural, intrusive or specialist surveys have been undertaken as part of this design.

CLIENT: 45 BROOKSLEIGH ST LONDON NW6 1QG	PROJECT: WINDOW RENEWAL	DRAWING NO: PLANNING	DATE: 09.03.2023
TITLE: PROPOSED FRONT SASH AND CASEMENT WINDOW DETAIL		DRAWN BY: PQL	CHECKED BY: A