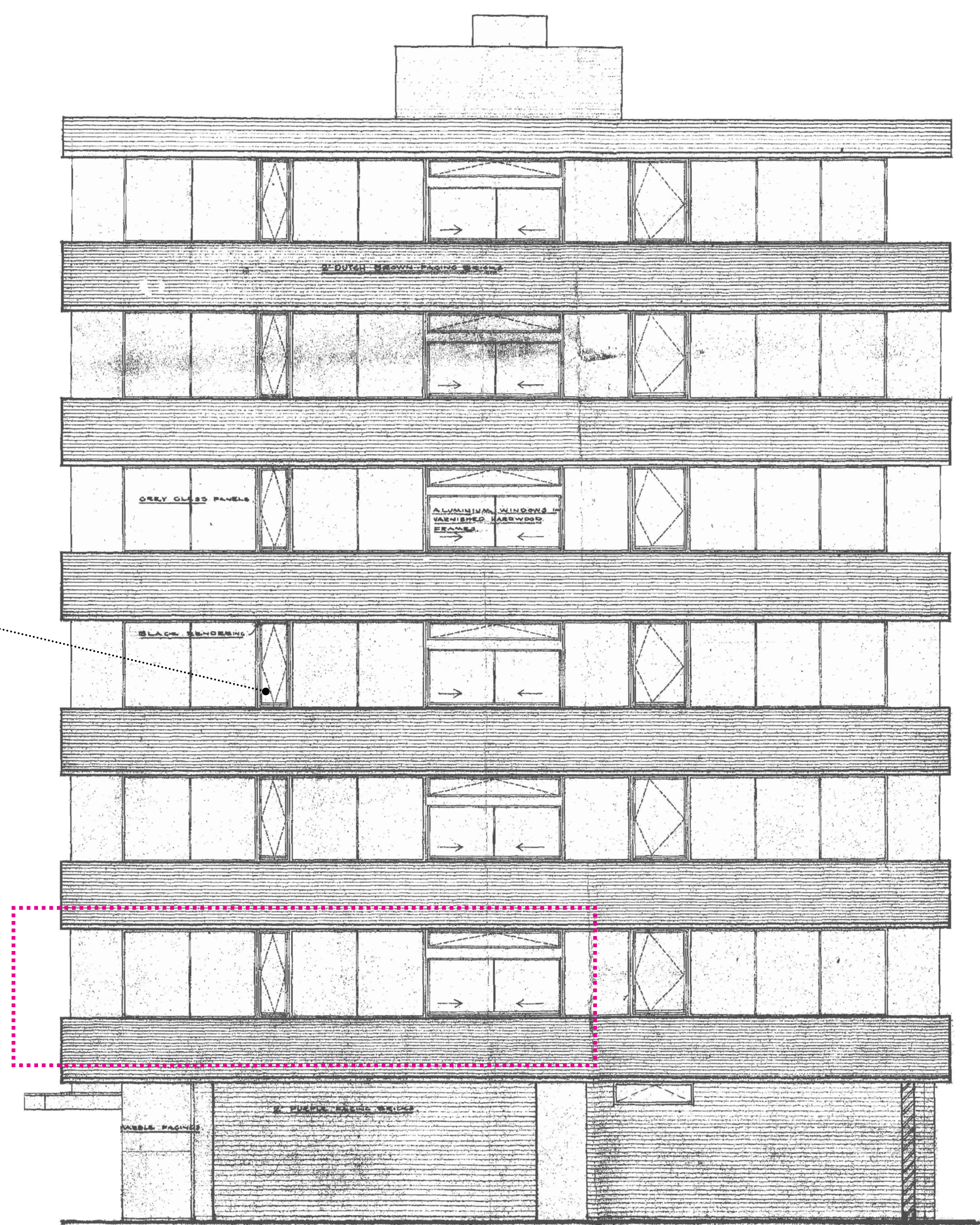




West Elevation

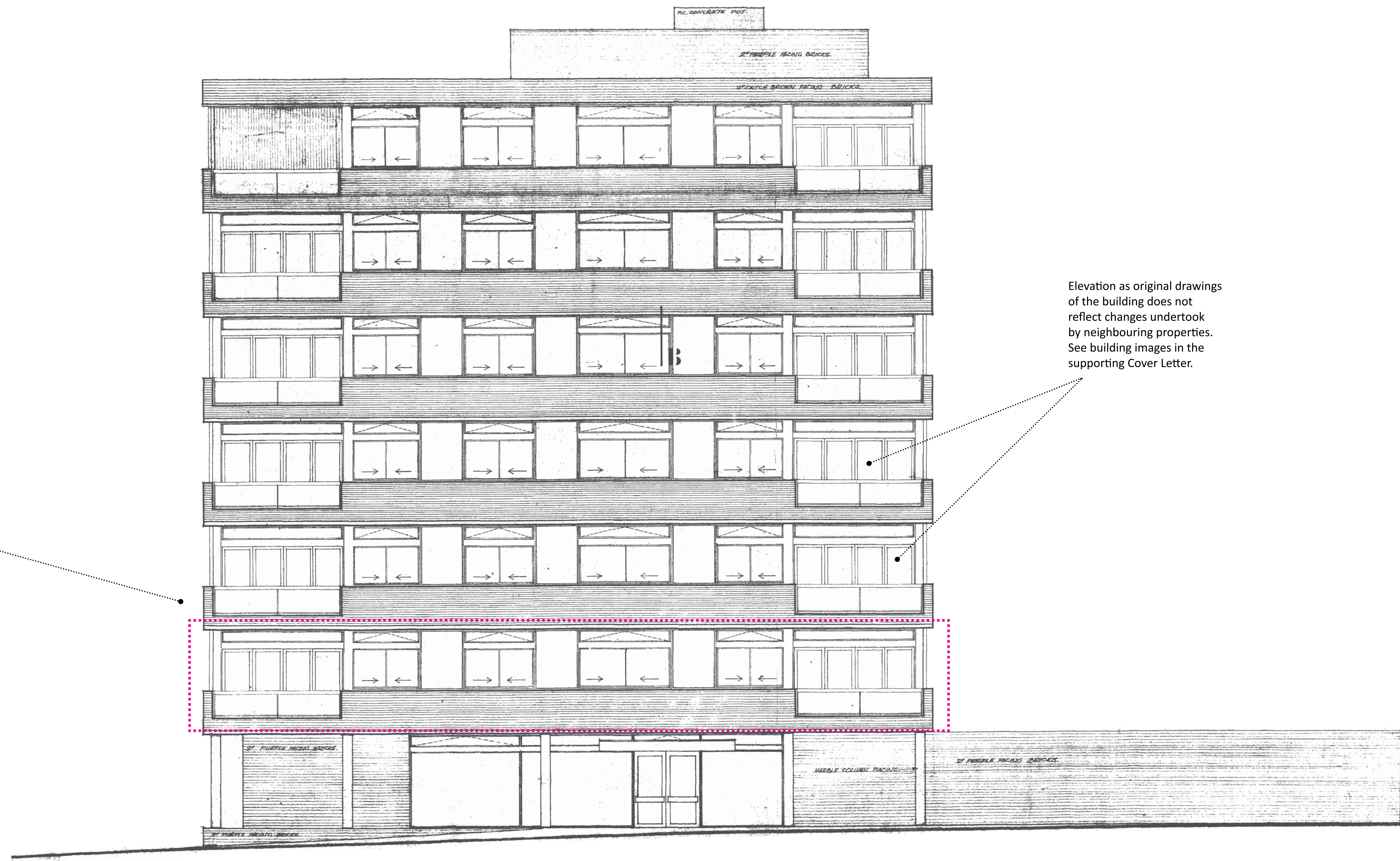
Elevation as original drawings of the building does not reflect changes undertaken by neighbouring properties. See building images in the supporting Cover Letter.

Windows of Flat 11 Oak Hill Lodge affected by application



East Elevation

Project	Job Ref.	23_11 OHL	Drawn by	MP
Flat 11 Oak Hill Lodge	Scale	1:50 @ A0	Checked by	ES
Drawing Title	Drawing no.	D101	Date	09.12.23
West and East Elevations - Existing	Rev.	01		



Windows of Flat 11 Oak Hill Lodge affected by application

Elevation as original drawings of the building does not reflect changes undertaken by neighbouring properties. See building images in the supporting Cover Letter.

South Elevation

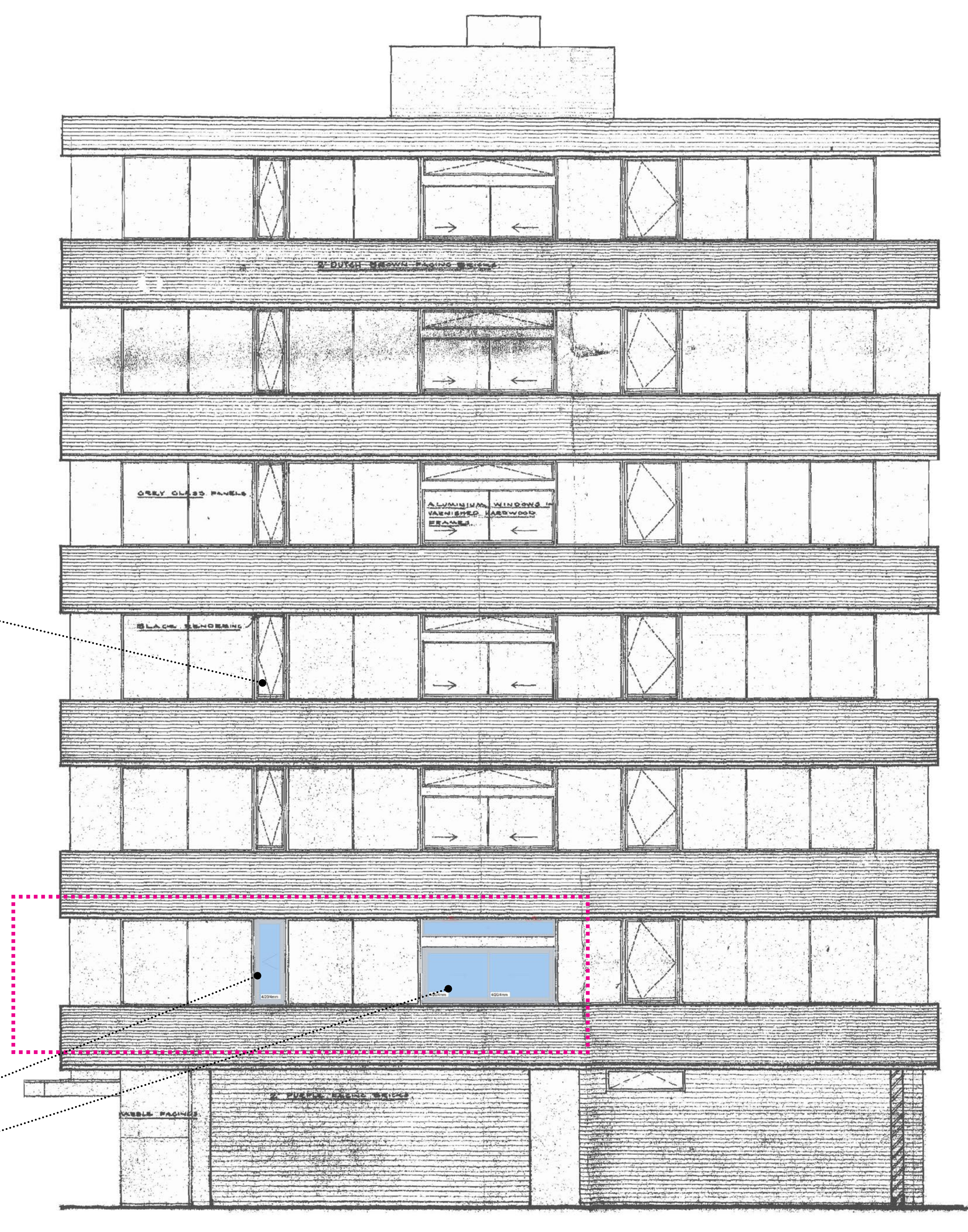
Project	Job Ref.	23_11 OHL	Drawn by	MP
Flat 11 Oak Hill Lodge	Scale	1:50 @ A0	Checked by	ES
Drawing Title	Drawing no.	D102	Date	09.12.23
South Elevation - Existing			Rev.	01



West Elevation

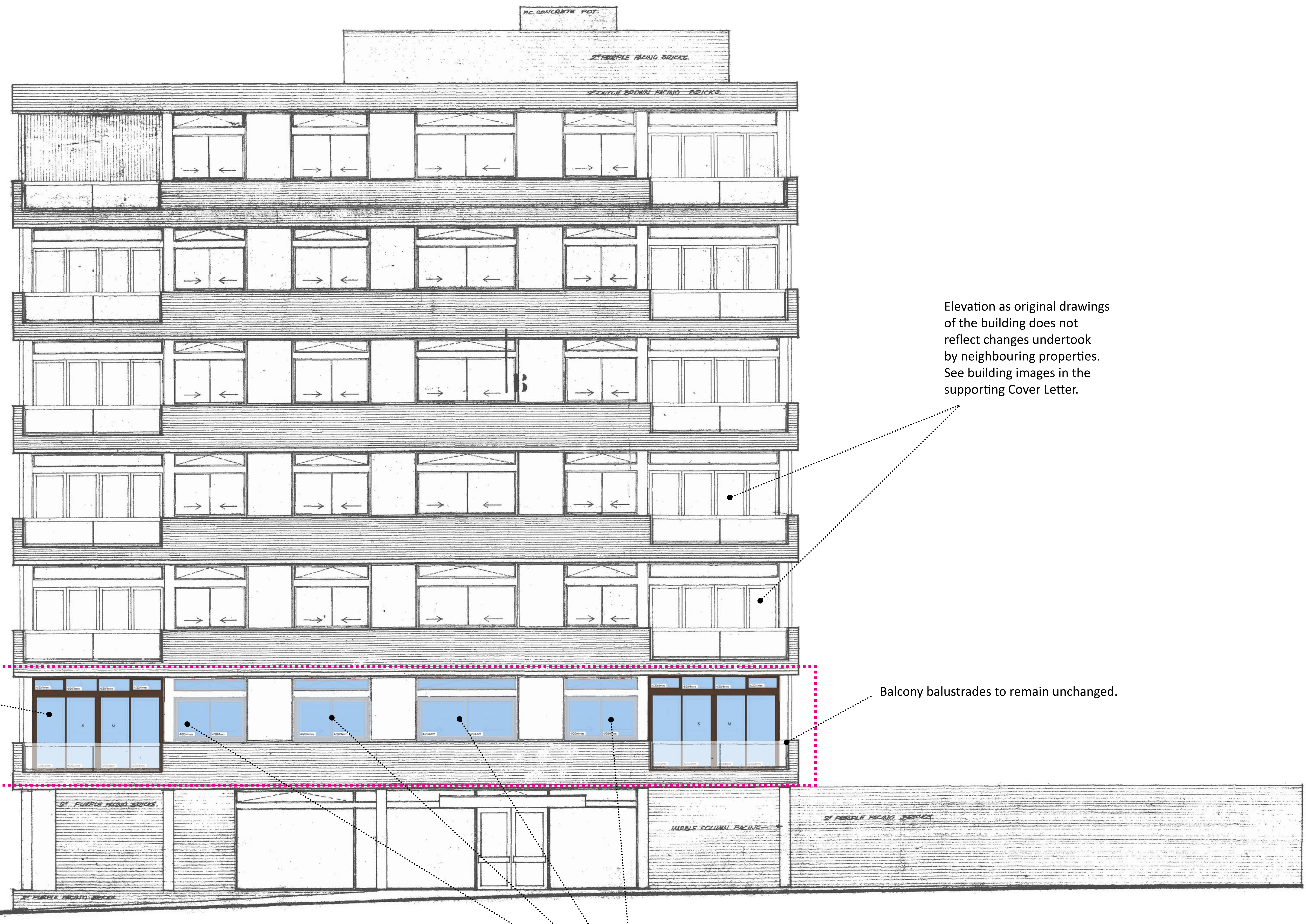
New windows to maintain same design, finish, and colour as original windows. Beam between upper and lower frames to remain in place. Windows profile slightly wider due to availability of suppliers - but in lines with alterations undertaken by neighbouring properties for facade consistency.

Elevation as original drawings of the building does not reflect changes undertaken by neighbouring properties. See building images in the supporting Cover Letter.



East Elevation

Project	Job Ref.	23_11 OHL	Drawn by	MP
Flat 11 Oak Hill Lodge	Scale	1:50 @ A0	Checked by	ES
Drawing Title	Drawing no.	D103	Date	09.12.23
West and East Elevations - Proposed	Rev.			01

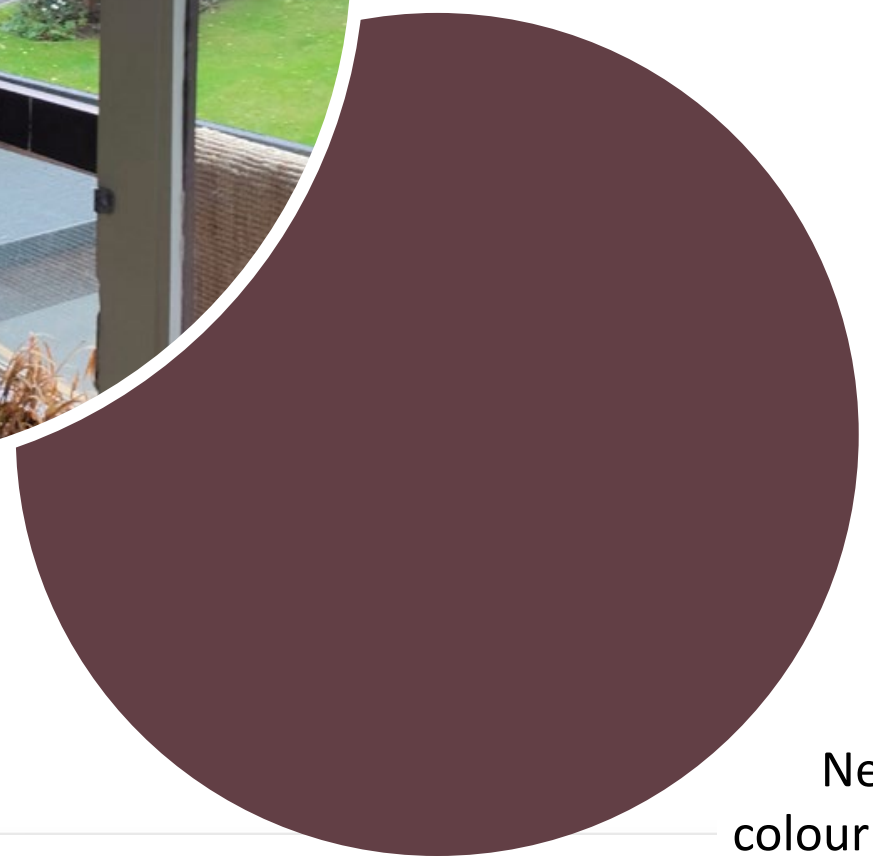
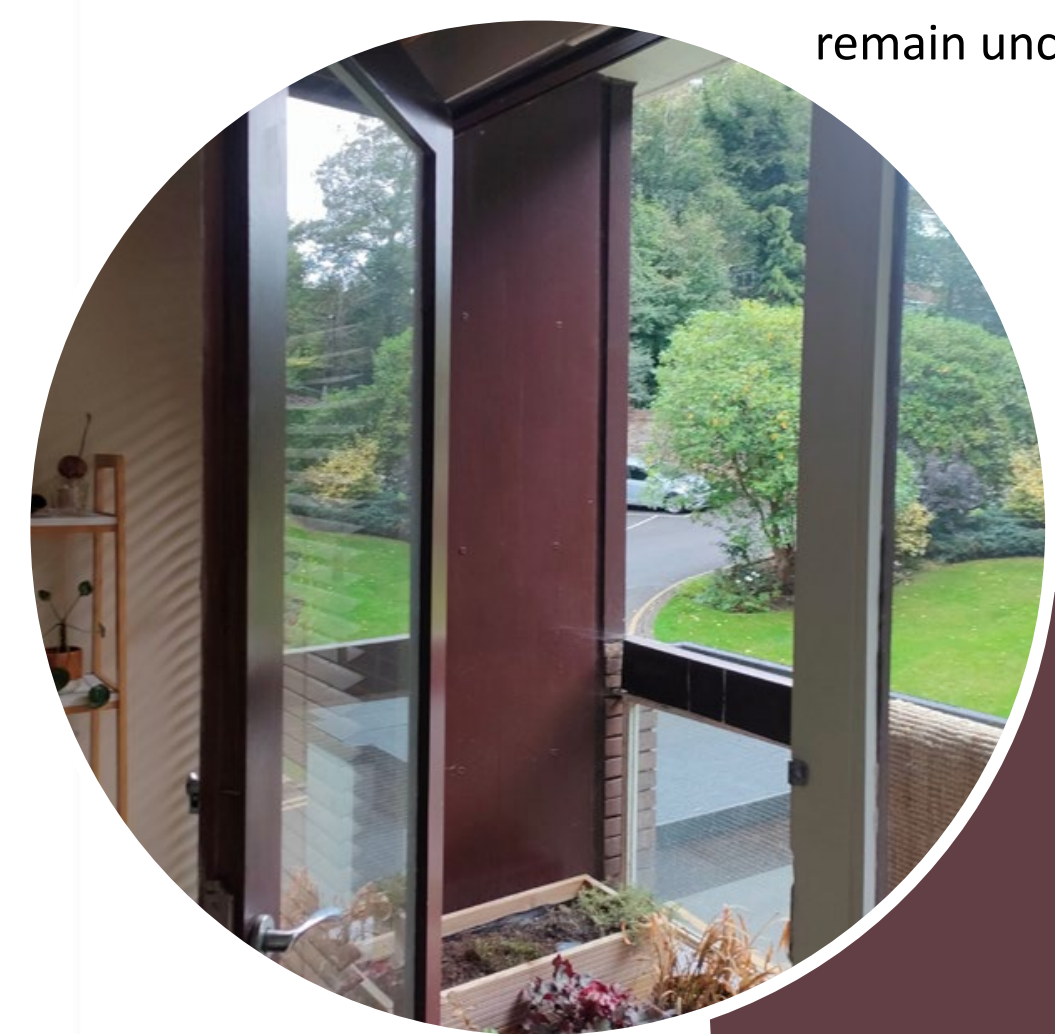


Elevation as original drawings of the building does not reflect changes undertaken by neighbouring properties. See building images in the supporting Cover Letter.

Wooden balcony doors replaced by aluminium frames, consistent with changes undertaken by neighbours (see Cover Letter). Aluminium frames to offer better insulation, acoustic performance and safety. Design to remain the same with division into 4 panels. Colour to remain the same as building elevation (see below). Beam between lower panels and upper window incorporated into window design.

Balcony balustrades to remain unchanged.

Existing colour and finish of building's facade. External panels and balustrade to remain unchanged.



New aluminium doors to match facade colour (RAL 8011 Nut Brown Matt sample)

New windows to maintain same design, finish, and colour as original windows. Beam between upper and lower frames to remain in place. Windows profile slightly wider due to availability of suppliers - but in line with alterations undertaken by neighbouring properties for facade consistency.

South Elevation

Project	Flat 11 Oak Hill Lodge	Job Ref.	23_11 OHL	Drawn by	MP
Drawing Title	South Elevation - Proposed	Scale	1:50 @ A0	Checked by	ES
		Drawing no.	D104	Date	09.12.23
		Rev.			01