

Rev D Modifications:

- A. Deeper planters with climbers along the handrail to increase planting mass and variation.
- B. Note deep planter zones for intensive tall planting updated to reflect landscape design. Planters are raised 750mm from floor deck to increase the coverage of the tall planting. This increases the overall coverage from the as submitted planning with three planter locations with plants of up to 2.5-3 meters in height.

THE COPYRIGHT DESIGN AND PATENTS ACT
THIS DRAWING IS THE COPYRIGHT OF OUPST
AND MUST NOT BE COPIED OR REPRODUCED, IN
WHOLE OR PART, BY ANY METHOD
WHATSOEVER, WITHOUT THE PRIOR WRITTEN
APPROVAL OF OUPST

NOTES

ALL SETTING OUT MUST BE CHECKED ON SITE ALL
LEVELS MUST BE CHECKED ON SITE
ALL DIMENSIONS MUST BE CHECKED ON SITE
DO NOT SCALE FROM THIS DRAWING
THIS DRAWING MUST NOT BE USED ON SITE
UNLESS ISSUED FOR CONSTRUCTION

14.11.2023	C	Revised Planting Update
27.01.2023	B	Adjusted Window Position
14.11.2022	A	Issued To Planning

date rev issue & comments

PLANNING

OUTPOST

studio@outpostlondon.com

020 7928 2481

Purple Studio, Old Paradise Yard
20 Carlisle Lane, London, SE1 7LG

Project Title:

125 Finchley Road
NW3 6HY London

Drawing Title:

As Proposed
West Elevation

Scale: 1:150@A3

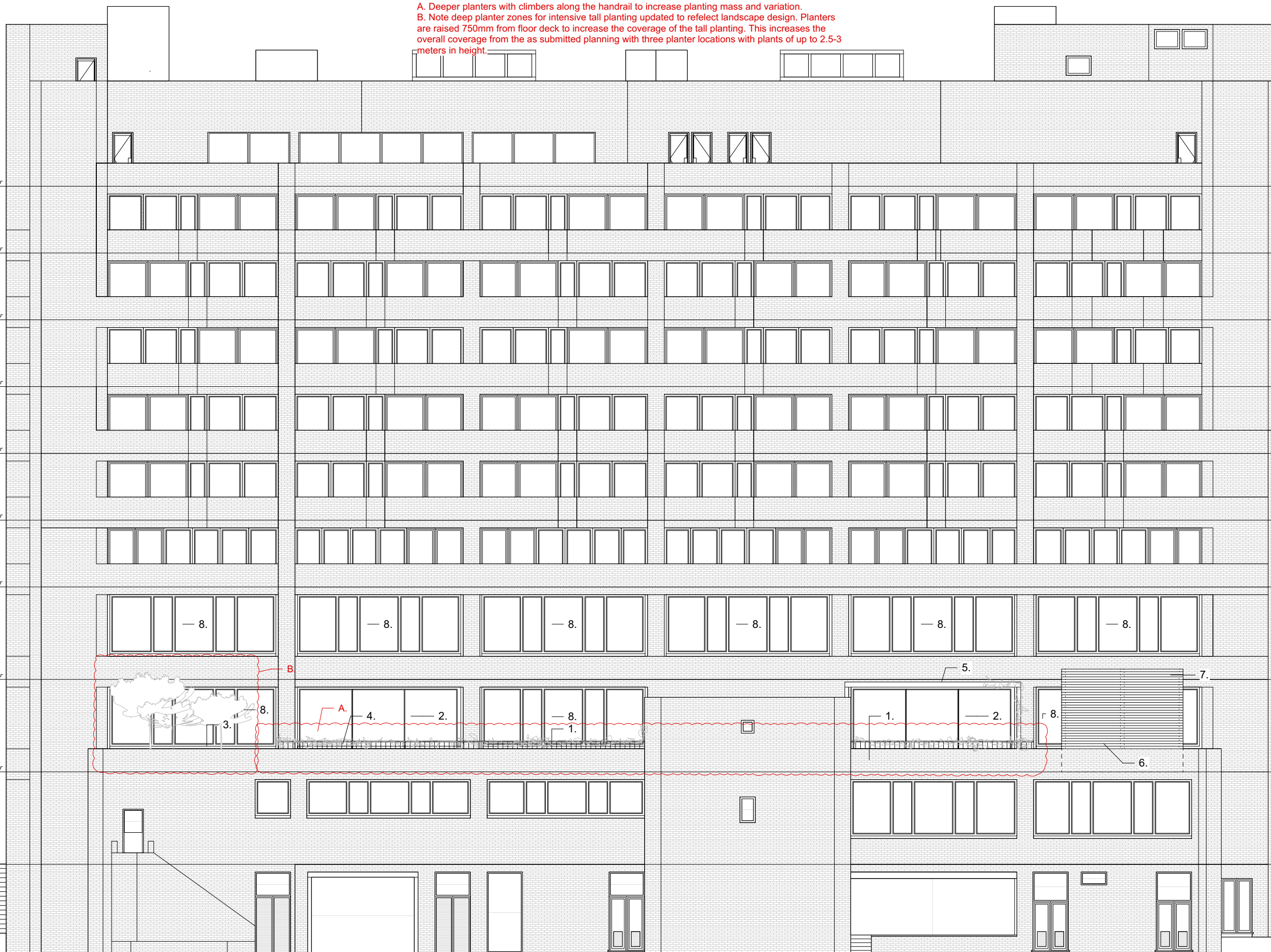
Date: 27.01.23

Revision:

Drawing No.:

C

(GA)_201



1 **As Proposed West Elevation**
Scale: 1:150@A3

- Key:
1. Proposed roof terrace area accessible from the first floor office
 2. Proposed aluminium sliding door system to match existing glazing allowing access to the roof terrace
 3. Proposed area of dedicated landscaping to provide buffer zone to adjacent buildings and landscaping
 4. Proposed planter and handrail set back from the existing brick facade

5. Proposed metal frame pergola over dedicated seating area for shading, visual screening and acoustic attenuation by specialist supplier
6. Proposed new condenser location. See acoustic report.
7. Proposed acoustically attenuated plant enclosure in metal finish. See acoustic report
8. Proposed new windows to match existing pushed out in line with existing corner chamfer.

