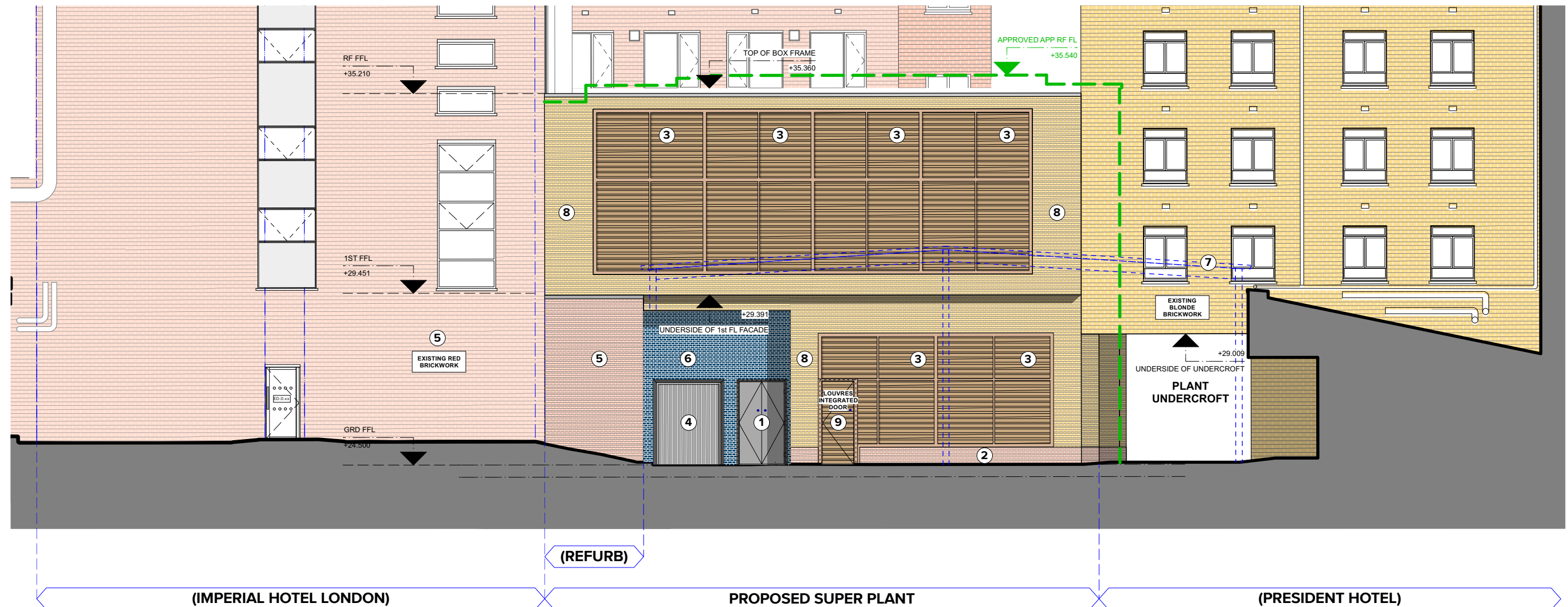
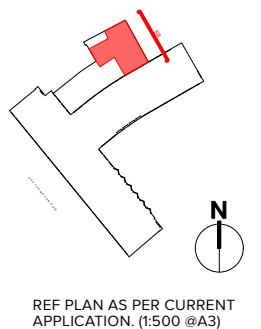


PROPOSED SUPER PLANT - NORTH EAST ELEVATION
AS PER NMA APPLICATIONPLANNING LINE AS APPROVED
APPLICATION REFERENCE: 2019/2766/P

SUPER PLANT AREA MATERIALS KEY

1 EXISTING WINDOWS & DOORS TO BE REPLACED WITH ALUMINIUM DOUBLE GLAZED UNITS WITH POLYESTER POWDER COATED.	6 EXISTING BRICKWORK STRETCHER BOND BLUE-BLACK BRICKWORK TO BE CLEANED & MADE GOOD.
2 PROPOSED BRICKWORK 01 STRETCHER BOND RUSTY-RED ENGINEERING BRICKWORK WITH GREY GROUTING.	7 REMOVAL OF EXISTING CANOPY TO BE ERECTED BACK AFTER PLANT WORKS. SEE PROPOSED CANOPY LAYOUT DRAWINGS.
3 LOUVRES ALUMINIUM PPC GRILLES TO MATCH WINDOW FRAMES. BRONZE FINISH.	8 PROPOSED BRICKWORK 02 STRETCHER BOND GREY-BLONDE ENGINEERING BRICKWORK WITH GREY GROUTING.
4 EXISTING LIFT DOOR TO BE REPLACED WITH POLYESTER POWDER COATED ALUMINIUM FRAME SHUTTER DOOR	9 STEEL DOOR WITH INTEGRATED LOUVRES FREE AIR OF THE LOUVRES TO BE IDENTIFY BY M&E CONSULTANT. BRONZE FINISH.
5 EXISTING FAÇADE WHOLE FAÇADE TO BE CLEANED AND WASHED. TO MAKE GOOD WHERE NECESSARY.	To be read in conjunction with 1417-P113 (A) Proposed Materials Board

SOURCE INFORMATION:
Survey supplied by Maltby Surveys. Original data received on April
2018, with updates in October 2018 and March 2019. Dry Riser
location, position to be confirmed by M&E specialist.

REF PLAN AS PER CURRENT
APPLICATION. (1:500 @A3)

0 1.25 2.5 3.75 5 6.25m