

| | |
|-------------|-------------------------------|
| TOP OF ROOF | +136.200 m AOD: +152.380 m |
| LEVEL 36 | +122.210 m AOD: +148.200 m |
| LEVEL 35 | +118.020 m AOD: +144.450 m |
| LEVEL 34 | +112.440 m AOD: +140.270 m |
| LEVEL 33 | +109.050 m AOD: +136.980 m |
| LEVEL 32 | +105.920 m AOD: +133.690 m |
| LEVEL 31 | +102.600 m AOD: +130.400 m |
| LEVEL 30 | +99.400 m AOD: +127.280 m |
| LEVEL 29 | +96.250 m AOD: +124.080 m |
| LEVEL 28 | +93.050 m AOD: +120.980 m |
| LEVEL 27 | +89.850 m AOD: +117.680 m |
| LEVEL 26 | +86.650 m AOD: +114.480 m |
| LEVEL 25 | +83.450 m AOD: +111.280 m |
| LEVEL 24 | +80.250 m AOD: +108.080 m |
| LEVEL 23 | +77.050 m AOD: +104.880 m |
| LEVEL 22 | +73.850 m AOD: +101.680 m |
| LEVEL 21 | +70.650 m AOD: +98.480 m |
| LEVEL 20 | +67.450 m AOD: +95.280 m |
| LEVEL 19 | +64.250 m AOD: +92.080 m |
| LEVEL 18 | +61.050 m AOD: +88.880 m |
| LEVEL 17 | +57.850 m AOD: +85.680 m |
| LEVEL 16 | +54.650 m AOD: +82.480 m |
| LEVEL 15 | +51.450 m AOD: +79.280 m |
| LEVEL 14 | +48.250 m AOD: +76.080 m |
| LEVEL 13 | +45.050 m AOD: +72.880 m |
| LEVEL 12 | +41.850 m AOD: +69.680 m |
| LEVEL 11 | +38.650 m AOD: +66.480 m |
| LEVEL 10 | +35.450 m AOD: +63.280 m |
| LEVEL 09 | +32.250 m AOD: +60.080 m |
| LEVEL 08 | +29.050 m AOD: +56.880 m |
| LEVEL 07 | +25.850 m AOD: +53.680 m |
| LEVEL 06 | +22.650 m AOD: +50.480 m |
| LEVEL 05 | +19.450 m AOD: +47.280 m |
| LEVEL 04 | +16.250 m AOD: +44.080 m |
| LEVEL 03 | +13.050 m AOD: +40.880 m |
| LEVEL 02 | +9.850 m AOD: +37.680 m |
| LEVEL 01 | +6.650 m AOD: +34.480 m |
| LEVEL 00 | +3.450 m AOD: +31.280 m |
| LEVEL B1 | -0.750 m AOD: +27.080 m |
| LEVEL B2 | -3.950 m AOD: +22.880 m |

Euston Tower

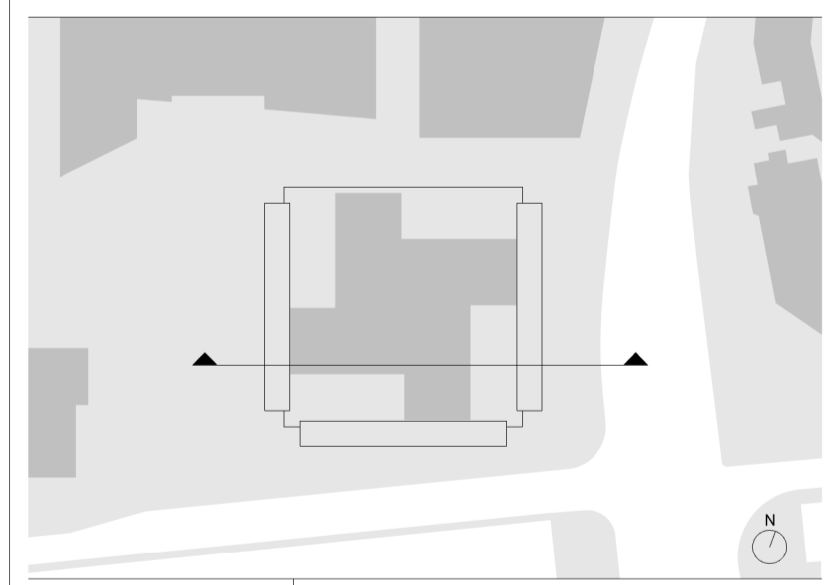
- Notes
1. Do not scale drawings. Dimensions govern.
 2. All dimensions are in millimeters unless noted otherwise.
 3. All dimensions shall be verified on site before proceeding.
 4. The author shall be notified in writing of any discrepancies.
 5. This drawing is protected by copyright.

Revisions:

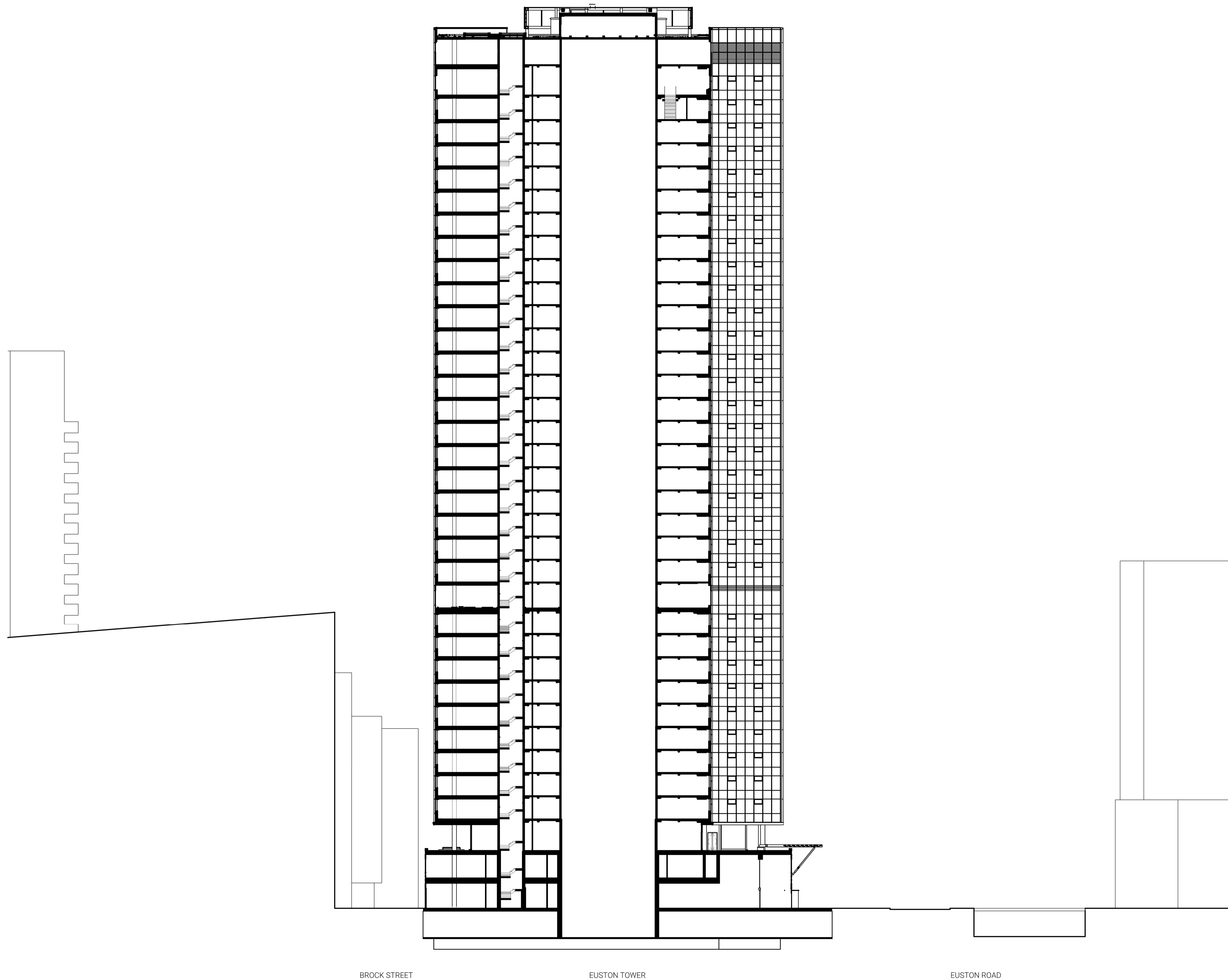
| | |
|-------------------------|--|
| P1: Planning Submission | |
| - | |
| - | |
| - | |
| - | |
| - | |
| - | |
| - | |
| - | |
| - | |
| - | |
| - | |
| - | |
| - | |
| - | |
| - | |
| - | |
| - | |



| | |
|-----------------------|---|
| PROJECT NAME | EUSTON TOWER |
| AUTHOR PROJECT NUMBER | 1312 |
| PROJECT PHASE | PLANNING APPLICATION |
| CLIENT | British Land Property Management Limited York House 45, Seymour Street, London. W1H 7LX info@britishland.com / Tel: +44 20 7486 4466 |



| | |
|----------------|------------------------------|
| GRAPHIC SCALE | 0 2M 4M 10M |
| SCALE | 1 : 300 (A1) |
| AUTHOR | 3XN |
| REVISION | P1 |
| ISSUE DATE | 01/12/2023 |
| DRAWING TITLE | Section AA - Existing |
| DRAWING NUMBER | ET-DR-A-00310 |



| | | |
|-------------|-----------|-----------------|
| TOP OF ROOF | +152.300m | AOD: +152.300 m |
| LEVEL 36 | +152.310m | AOD: +148.200 m |
| LEVEL 35 | +148.200m | AOD: +144.455 m |
| LEVEL 34 | +142.270m | AOD: +140.270 m |
| LEVEL 33 | +136.980m | AOD: +136.980 m |
| LEVEL 32 | +133.685m | AOD: +133.685 m |
| LEVEL 31 | +130.600m | AOD: +130.600 m |
| LEVEL 30 | +127.285m | AOD: +127.285 m |
| LEVEL 29 | +124.085m | AOD: +124.085 m |
| LEVEL 28 | +120.980m | AOD: +120.980 m |
| LEVEL 27 | +117.685m | AOD: +117.685 m |
| LEVEL 26 | +114.485m | AOD: +114.485 m |
| LEVEL 25 | +111.285m | AOD: +111.285 m |
| LEVEL 24 | +108.085m | AOD: +108.085 m |
| LEVEL 23 | +104.885m | AOD: +104.885 m |
| LEVEL 22 | +101.685m | AOD: +101.685 m |
| LEVEL 21 | +98.485m | AOD: +98.485 m |
| LEVEL 20 | +95.285m | AOD: +95.285 m |
| LEVEL 19 | +92.085m | AOD: +92.085 m |
| LEVEL 18 | +88.885m | AOD: +88.885 m |
| LEVEL 17 | +85.685m | AOD: +85.685 m |
| LEVEL 16 | +82.485m | AOD: +82.485 m |
| LEVEL 15 | +79.285m | AOD: +79.285 m |
| LEVEL 14 | +76.085m | AOD: +76.085 m |
| LEVEL 13 | +72.885m | AOD: +72.885 m |
| LEVEL 12 | +69.685m | AOD: +69.685 m |
| LEVEL 11 | +66.485m | AOD: +66.485 m |
| LEVEL 10 | +63.285m | AOD: +63.285 m |
| LEVEL 09 | +60.085m | AOD: +60.085 m |
| LEVEL 08 | +56.885m | AOD: +56.885 m |
| LEVEL 07 | +53.685m | AOD: +53.685 m |
| LEVEL 06 | +50.485m | AOD: +50.485 m |
| LEVEL 05 | +47.285m | AOD: +47.285 m |
| LEVEL 04 | +44.085m | AOD: +44.085 m |
| LEVEL 03 | +40.885m | AOD: +40.885 m |
| LEVEL 02 | +37.685m | AOD: +37.685 m |
| LEVEL 01 | +4.200m | AOD: +39.810 m |
| LEVEL 00 | +0.000m | AOD: +37.600 m |
| LEVEL B1 | -4.000m | AOD: +37.600 m |
| LEVEL B2 | -8.000m | AOD: +19.770 m |

Euston Tower

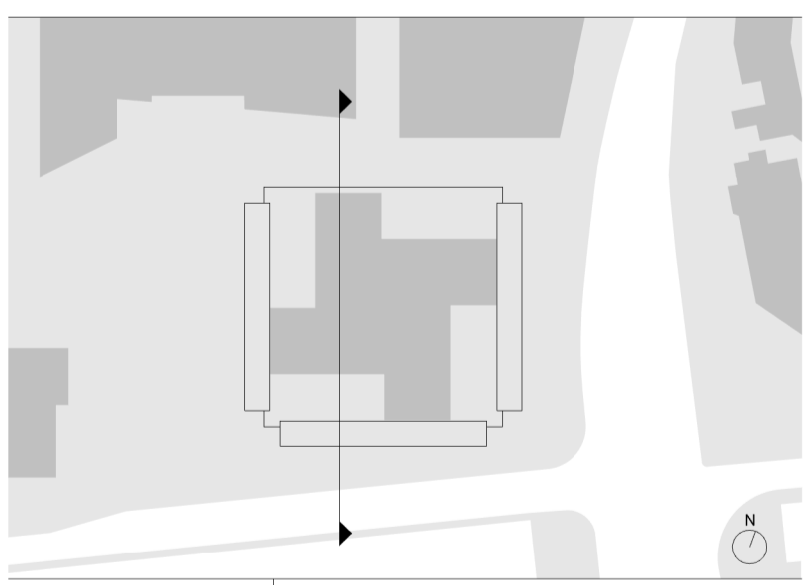
- Notes
1. Do not scale drawings. Dimensions govern.
 2. All dimensions are in millimeters unless noted otherwise.
 3. All dimensions shall be verified on site before proceeding.
 4. The author shall be notified in writing of any discrepancies.
 5. This drawing is protected by copyright.

Revisions:

| |
|-------------------------|
| P1: Planning Submission |
| - |
| - |
| - |
| - |
| - |
| - |
| - |
| - |
| - |
| - |
| - |
| - |
| - |



| | |
|-----------------------|---|
| PROJECT NAME | EUSTON TOWER |
| AUTHOR PROJECT NUMBER | 1312 |
| PROJECT PHASE | PLANNING APPLICATION |
| CLIENT | British Land Property Management Limited York House 45, Seymour Street, London. W1H 7LX info@britishland.com / Tel: +44 20 7486 4466 |



| | |
|----------------|------------------------------|
| GRAPHIC SCALE | 0 3M 6M 15M |
| SCALE | 1 : 300 (A1) |
| AUTHOR | 3XN |
| REVISION | P1 |
| ISSUE DATE | 01/12/2023 |
| DRAWING TITLE | Section BB - Existing |
| DRAWING NUMBER | ET-DR-A-00311 |

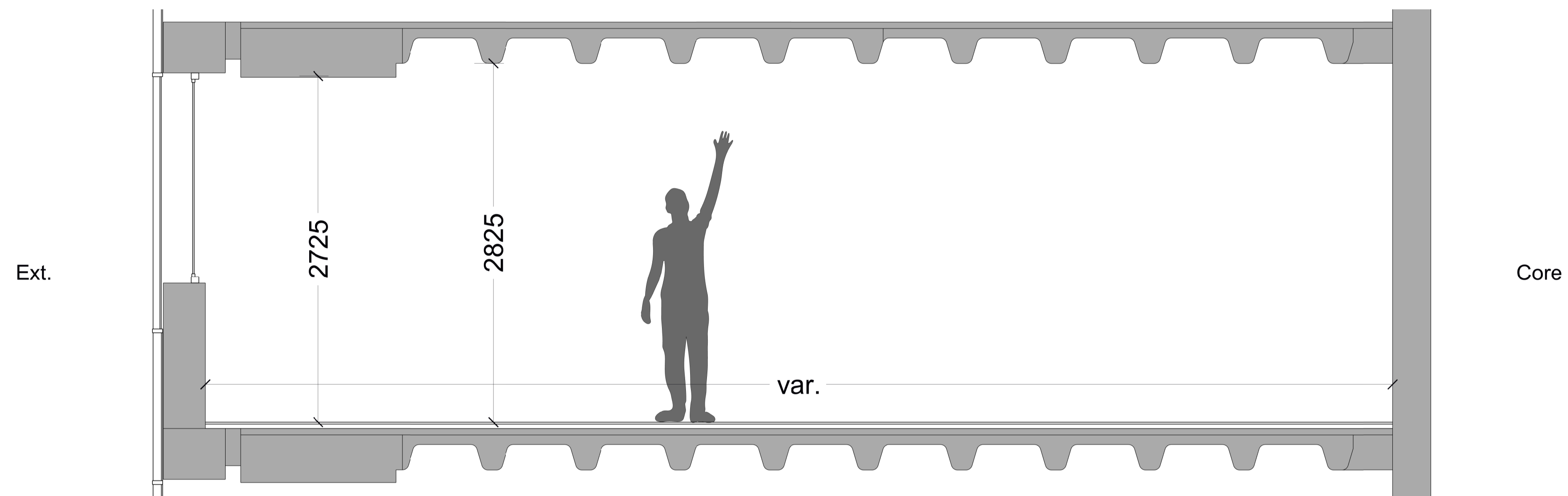
Notes

1. Do not scale drawings. Dimensions govern.
2. All dimensions are in millimeters unless noted otherwise.
3. All dimensions shall be verified on site before proceeding.
4. The author shall be notified in writing of any discrepancies.
5. This drawing is protected by copyright.

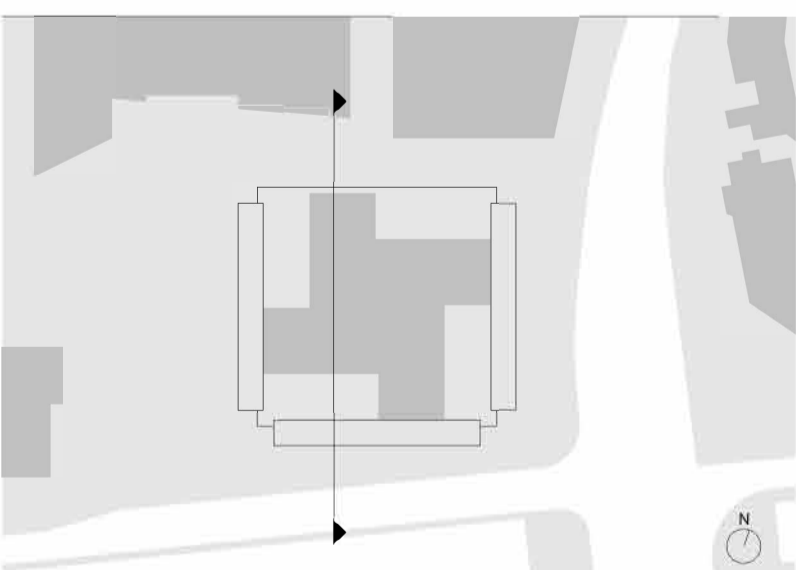
Revisions:

P1: Planning Submission

| |
|---|
| - |
| - |
| - |
| - |
| - |
| - |
| - |
| - |
| - |
| - |
| - |
| - |
| - |
| - |
| - |
| - |
| - |
| - |
| - |



| | |
|-----------------------|--|
| PROJECT NAME | EUSTON TOWER |
| AUTHOR PROJECT NUMBER | 1312 |
| PROJECT PHASE | PLANNING APPLICATION |
| CLIENT | British Land Property Management Limited York House 45, Seymour Street, London. W1H 7LX info@britishland.com / Tel: +44 20 7486 4466 |



| | |
|----------------|--------------------------------|
| GRAPHIC SCALE | 0 3M 6M 15M |
| SCALE | |
| AUTHOR | 3XN |
| REVISION | P1 |
| ISSUE DATE | 01/12/2023 |
| DRAWING TITLE | Room Section - Existing |
| DRAWING NUMBER | |