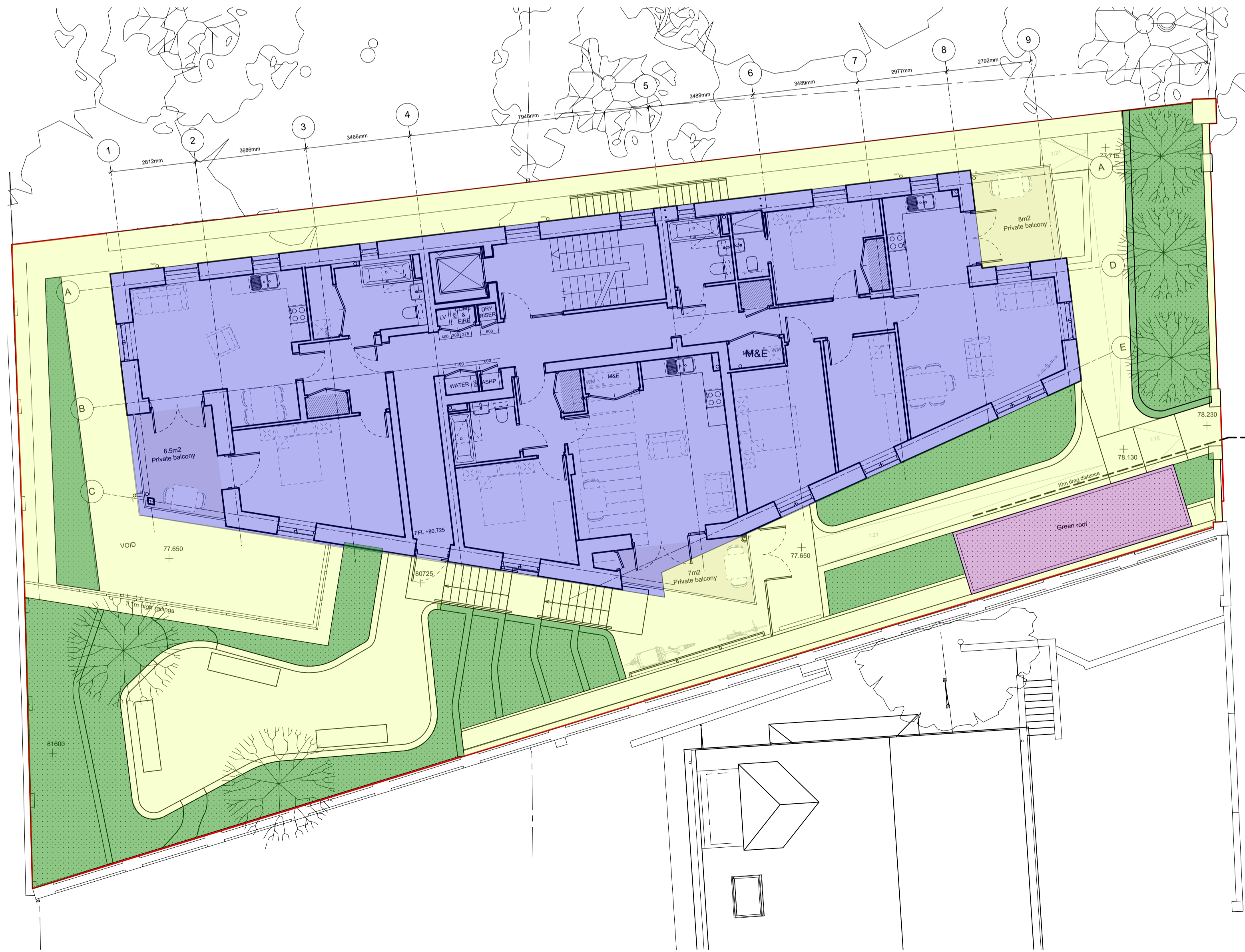
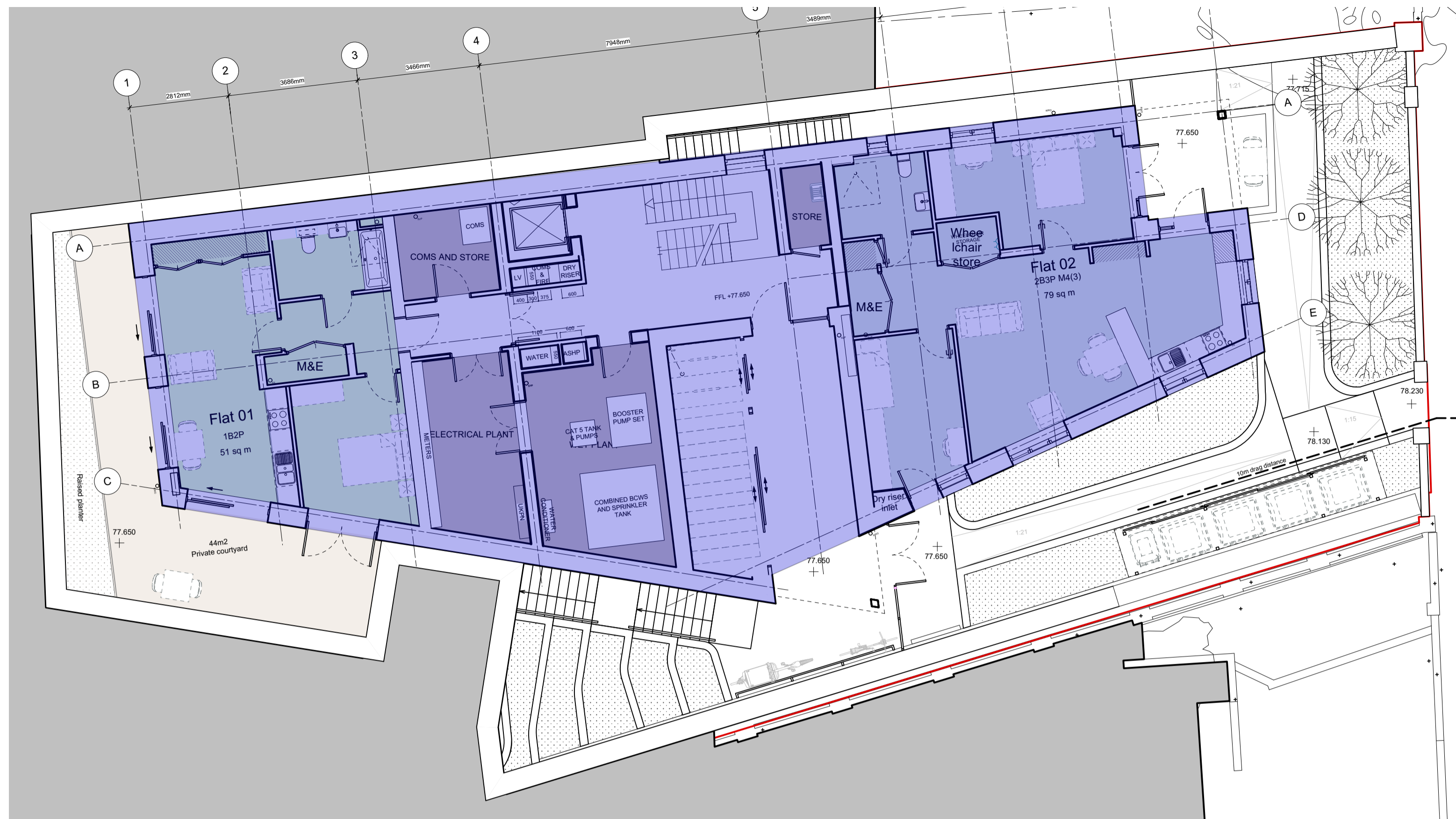


- Building footprint (measured at lower ground level)
308.6m²
- Hard landscaping
248.1m²
- Soft landscaping
129.4m²
- Bin store with green roof
16.4m²

Total site area - 702m²
Planting (including green roof) - 145.8m²
20.7%



Mole
 Mole Architects
 Floor 2, 52 Burleigh Street
 Cambridge
 CB1 1DJ
 Tel: 01223 913012
 www.molearchitects.co.uk

DO NOT SCALE FROM THIS DRAWING. VERIFY ALL DIMENSIONS ON SITE. DRAWING SHOULD BE READ IN CONJUNCTION WITH INFORMATION FROM ALL OTHER DESIGN CONSULTANTS AND CONTRACTORS. ALL DRAWINGS IN DIGITAL FORMAT ARE FOR REFERENCE ONLY.

Daleham Gardens
 Daleham Gardens, London
 W8 7LJ

Job no: 2102
 dwg. No: SK_12
 Title: Site areas

Status: SKETCH	Rev:
Scale: 1:100@ A3	
Date: 15/12/23	