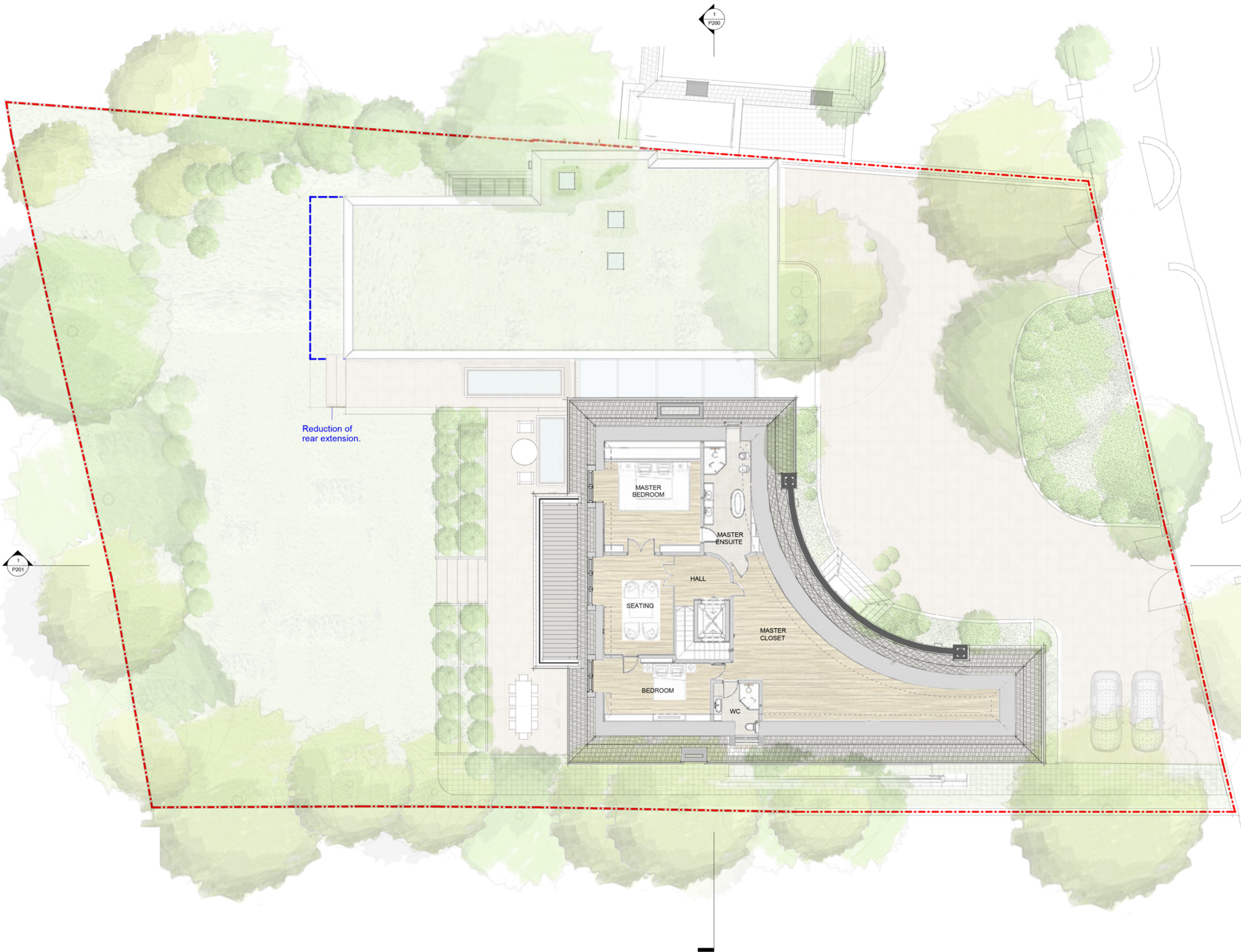


**General Notes**  
 This drawing is copyright of KSR architects. This drawing must be read in conjunction with the Designer's Risk Assessment, specification and all other relevant documentation and drawings.  
 KSR architects accept no liability for any expense, loss or damage of whatsoever nature and however arising from any variation made to this drawing or in the execution of the work to which it relates which has not been referred to them and their approval obtained.  
 Areas are based on un-checked survey and are approximate only. Do not scale from this drawing or the digital data, only figured dimensions are to be used. Refer to laser scale for guidance.  
 Check all dimensions on site prior to carrying out any works and advise any discrepancy.



Reduction of rear extension.

1  
P201

1  
P200

D	NMA	04.12.23	PBR
C	NMA	24.10.23	PBR
B	NMA	18.09.23	PBR
A	NMA	15.06.23	PBR
Rev	Description	Date	By
Status			

**Planning**

Key Plan:



**KSR ARCHITECTS & INTERIOR DESIGNERS**  
 KSR architects LLP  
 14 Greenland Street  
 London NW1 0HQ  
 www.ksrarchitects.com  
 E: +44 (0)20 7682 5000  
 www.ksrarchitects.com

Project:  
**69 Avenue Road**

Drawing Title:  
**Second Floor**

Date of first issue: 31/01/20  
 Scale: 1:100 @A1 / 1:200 @A3

Drawn By: MF  
 Checked By: DC  
 © KSR Architects

Drawing No: **18030-P120**  
 Rev: D

