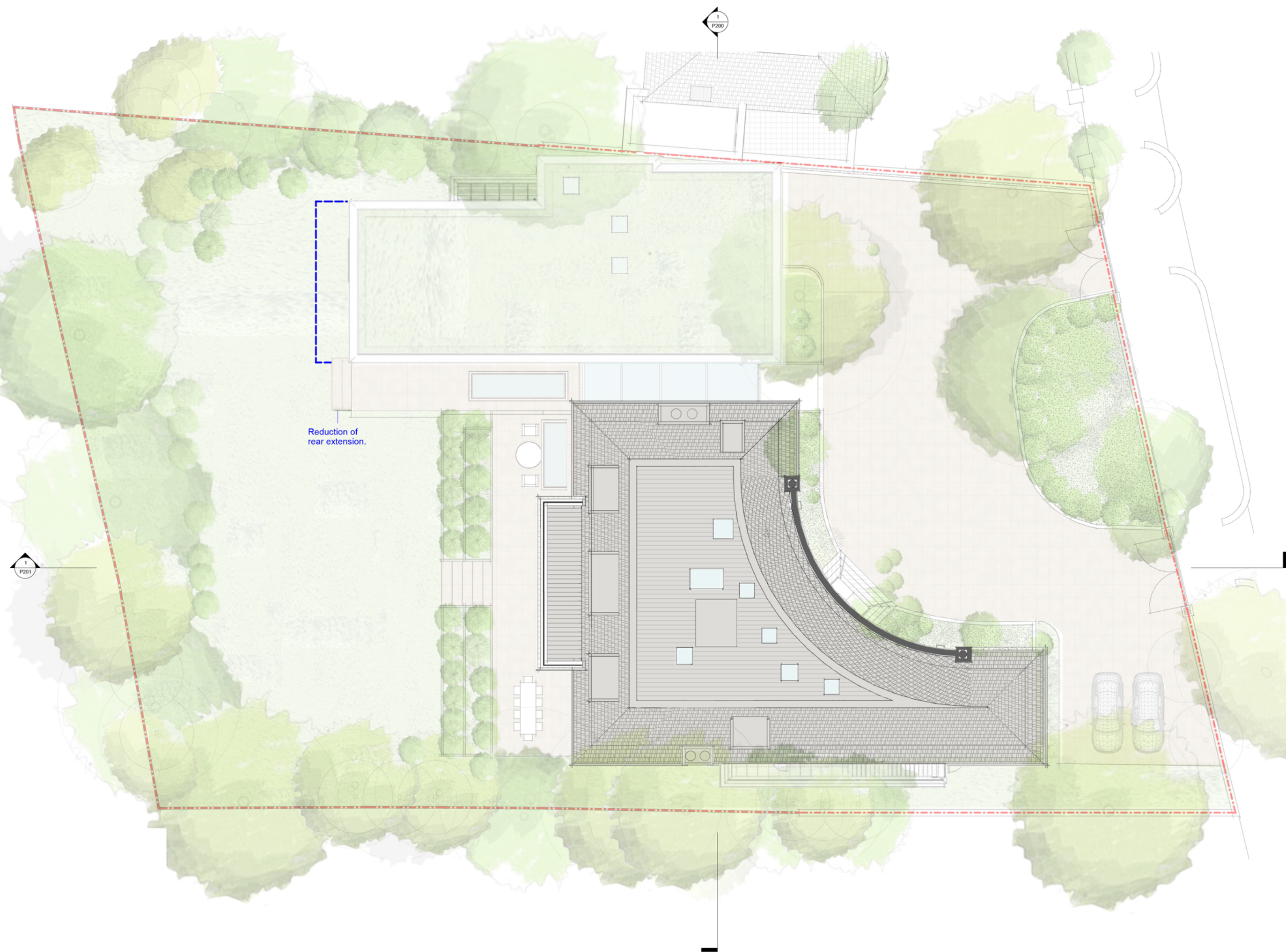


**General Notes**  
 This drawing is copyright of KSR architects. This drawing must be read in conjunction with the Designer's Risk Assessment, Specification and all other relevant documentation and drawings.  
 KSR architects accept no liability for any expense, loss or damage of whatsoever nature and however arising from any variation made to this drawing or in the opinion of the work to which it relates which has not been referred to them and a approval obtained.  
 All are based on uncheckered survey and are approximate only. Do not scale to this drawing or the digital data, only figured dimensions are to be used. Refer to the scale for guidance.  
 All dimensions on site prior to carrying out any works and advise any discrepancy.



Reduction of rear extension.

D	NMA	04.12.23	PBR
C	NMA	24.10.23	PBR
B	NMA	18.09.23	PBR
A	NMA	15.06.23	PBR

Rev: Description Date By:  
 Status: Planning

Key Plan:

**KSR ARCHITECTS & INTERIOR DESIGNERS**  
 KSR Architects LLP  
 14 Greenland Street  
 London NW1 0HQ  
 Tel: +44 (0)20 7682 5000  
 www.ksrarchitects.com

Project:  
**69 Avenue Road**

Drawing Title:  
**Roof Plan**

Date of first issue: 31/01/20  
 Scale: 1:100 @A1 / 1:50 @A3  
 Drawn By: MF  
 Checked By: DC  
 © KSR Architects

Drawing No: **18030-P130**  
 Rev: **D**

Legend:  
 — New façade  
 — Retained façade  
 Scale 1:100 @A1