

General Notes
This drawing is copyright of KSR architects. This drawing must be read in conjunction with the Designer's Risk Assessment, specification and all other relevant documentation and drawings.
KSR architects accept no liability for any expense, loss or damage of whatever nature and however arising from any variation made to this drawing or in the execution of the work to which it relates which has not been referred to them and their approval obtained.
Areas are based on un-checked survey and are approximate only. Do not scale from this drawing or the digital data, only figured dimensions are to be used. Refer to linear scale for guidance.
Check all dimensions on site prior to carrying out any works and advise any discrepancy.

Flood mitigation measures to at least 300mm above the 1 in 1000 year flood water level

Reduction of rear extension.

Flood mitigation measures to at least 300mm above the 1 in 1000 year flood water level

C	NMA	24.10.23	PBR
B	NMA	15.06.23	PBR
A	FRA notes added	30.11.20	DC
Rev	Description	Date	By
Status:			

Planning

Key Plan:

KSR ARCHITECTS & INTERIOR DESIGNERS
KSR Architects LLP
14 Greenland Street
London N16 7DZ
t: +44 (0)20 7682 5000
www.ksararchitects.com

Project:
69 Avenue Road

Drawing Title:

Ground Floor Plan

Date of first issue: 31/01/20 Scale: 1:100 @A1 / 1:200 @A3

Drawn By: MF Checked By: DC © KSR Architects

Drawing No: **18030-P100** Rev: C

— New façade
— Retained façade

0 1 2 4 8m
Scale 1:100 @A1

General Notes
This drawing is copyright of KSR architects. This drawing must be read in conjunction with the Designer's Risk Assessment, specification and all other relevant documentation and drawings.
KSR architects accept no liability for any expense, loss or damage of whatsoever nature and however arising from any variation made to this drawing or in the execution of the work to which it relates which has not been referred to them and their approval obtained.
Areas are based on an unclassified survey and are approximate only. Do not scale from this drawing or the digital data, only figured dimensions are to be used. Refer to linear scale for guidance.
Check all dimensions on site prior to carrying out any works and advise any discrepancy.



C	NMA	24.10.23	PBR
B	NMA	18.09.23	PBR
A	NMA	15.06.23	PBR
Rev	Description	Date	By
Status			

Planning

Key Plan:

KSR ARCHITECTS &
INTERIOR DESIGNERS

KSR architects LLP
14 Greenland Street
London W4H 1SD
t: +44 (0)20 7692 5000
www.ksrarchitects.com

Project:

69 Avenue Road

Drawing Title:

First Floor

Date of first issue:

31/01/20

Scale:

1:100 @A1 / 1:200 @A3

Drawn By:

MF

Checked By:

DC

Drawing No:

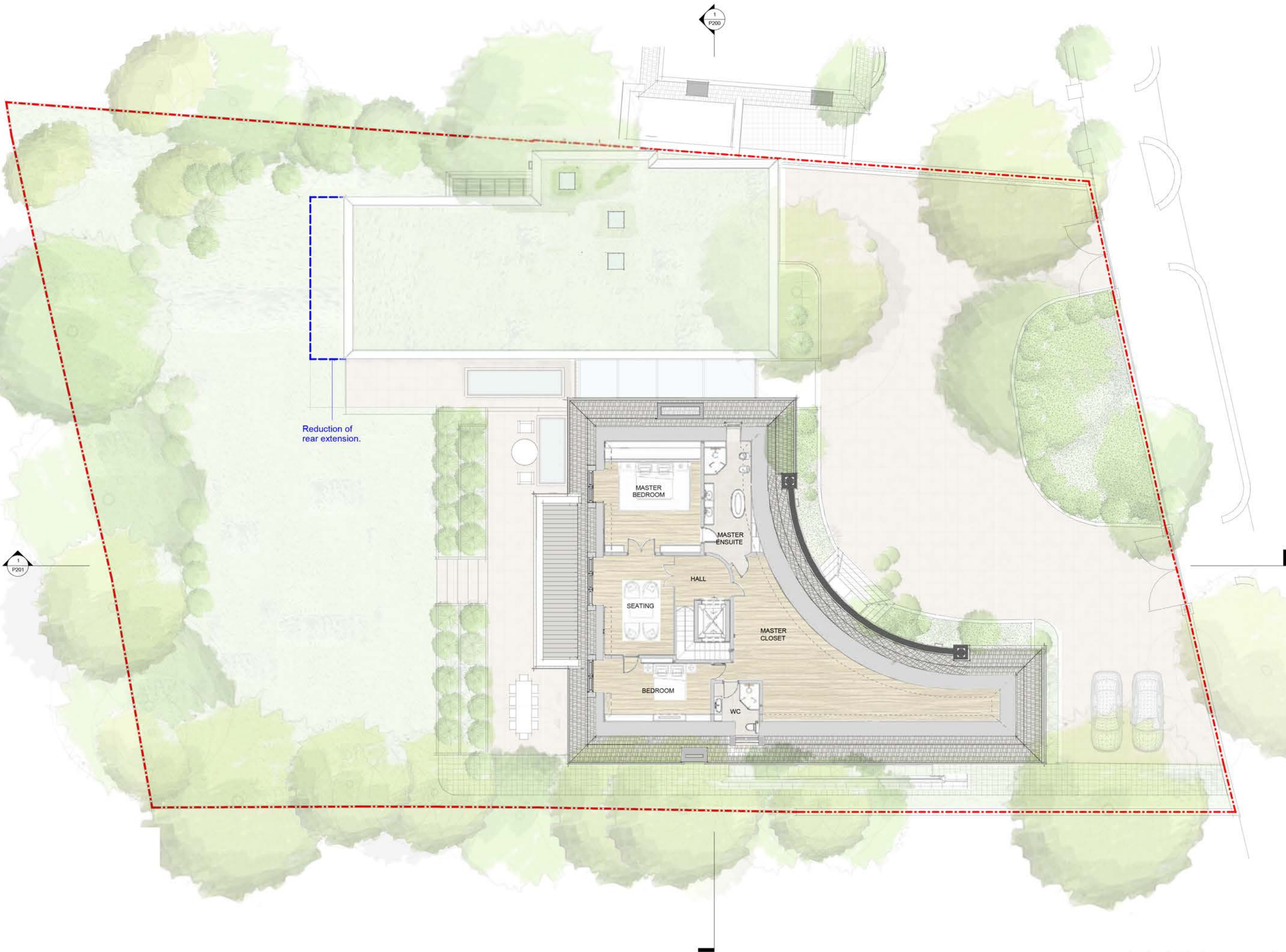
18030-P110

Rev:

C

© KSR Architects

General Notes
This drawing is copyright of KSR architects. This drawing must be read in conjunction with the Designer's Risk Assessment, specification and all other relevant documentation and drawings.
KSR architects accept no liability for any expense, loss or damage of whatsoever nature and however arising from any variation made to this drawing or in the execution of the work to which it relates which has not been referred to them and their approval obtained.
Areas are based on un-checked survey and are approximate only. Do not scale from this drawing or the digital data, only figure dimensions are to be used. Refer to level scale for guidance.
Check all dimensions on site prior to carrying out any works and advise any discrepancy.



Reduction of rear extension.

C	NMA	24.10.23	PBR
B	NMA	18.09.23	PBR
A	NMA	15.06.23	PBR
Rev	Description	Date	By
Status			

Planning

Key Plan:

KSR ARCHITECTS & INTERIOR DESIGNERS
KSR architects LLP
14 Greenland Street
London W41 1SD
t: +44 (0)20 7650 5000
www.ksrarchitects.com

Project:

69 Avenue Road

Drawing Title:

Second Floor

Date of first issue: 31/01/20 Scale: 1:100 @A1 / 1:200 @A3

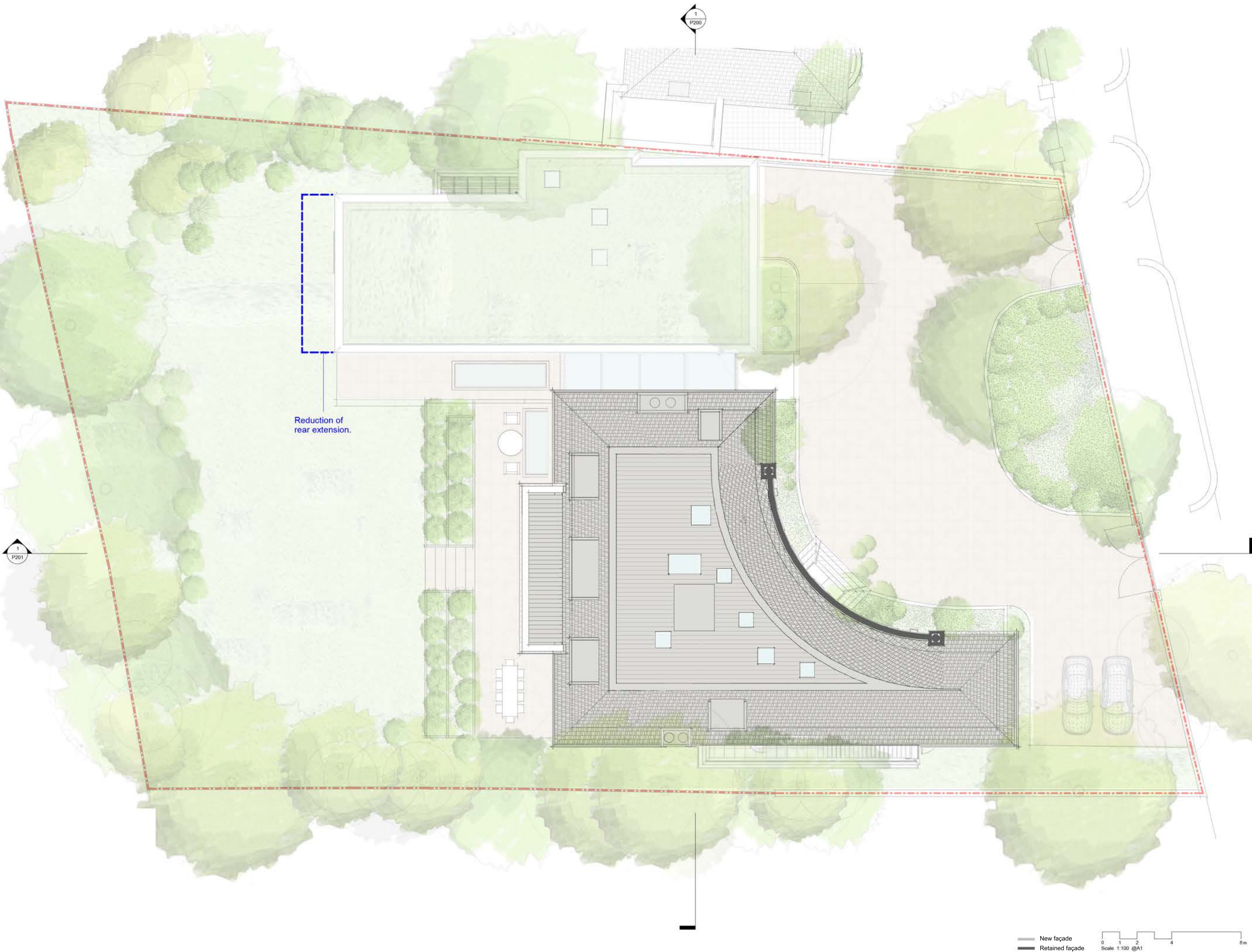
Drawn By: MF Checked By: DC © KSR Architects

Drawing No: 18030-P120 Rev: C

— New façade
— Retained façade

0 1 2 4 6m
Scale 1:100 @A1

Coral Notes
This drawing is copyright of KSR architects. This drawing must be read in conjunction with the Designer's Risk Assessment, specification and all other relevant documentation and drawings.
KSR architects accept no liability for any expense, loss or damage of whatsoever kind and however arising from any variation made to this drawing or in the opinion of the work to which it relates which has not been referred to them and a approval obtained.
We are based on uncalibrated survey and are approximate only. Do not scale. In this drawing or the digital data, only figured dimensions are to be used. Refer to the scale for guidance.
Check all dimensions on site prior to carrying out any works and advise any discrepancy.



C	NMA	24.10.23	PBR
B	NMA	18.09.23	PBR
A	NMA	15.06.23	PBR
Rev	Description	Date	By
Status			

Planning

Key Plan:



KSR ARCHITECTS & INTERIOR DESIGNERS
KSR architects LLP
14 Greenland Street
London W4H 1SD
info@ksrarchitects.com
t: +44 (0)20 7692 5000
www.ksrarchitects.com

Project:

69 Avenue Road

Drawing Title:

Roof Plan

Date of first issue:

Scale:
1:100 @A1 / 1:50 @A3

Drawn By:

Checked By:

© KSR Architects

Drawing No:

18030-P130

Rev:

C

— New façade
— Retained façade

Scale 1:100 @A1
0 1 2 4 6m



GENERAL NOTES:
This drawing is copyright of KSR architects. This drawing must be read in conjunction with the Designer's Risk Assessment, specification and all other relevant documentation and drawings.
KSR architects accept no liability for any expense, loss or damage of whatsoever nature and however arising from any variation made to this drawing or in the execution of the work to which it relates which has not been referred to them and their approval obtained.
Areas are based on uncharted survey and are approximate only. Do not scale from this drawing or the digital data, only figured dimensions are to be used. Refer to block scale for guidance.
Check all dimensions on site prior to carrying out any works and advise any discrepancy.

0 1 2 4m
Scale 1:50 @A1

Rev	Description	Date	By
15.06.23	NMA		PBR

© KSR Architects

Status:
Planning
Scale:
1:50 @A1 1:100 @A3

Project:
69 Avenue Road

Date of first issue:
31/01/20

Drawn By:
MF

Checked By:
DC

KSR ARCHITECTS & INTERIOR DESIGNERS
KSR Architects LLP
14 Gower Street
London WC1E 6BT
t: +44 (0)20 7632 3000
e: info@ksrarchitects.com
www.ksrarchitects.com

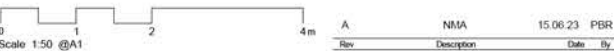
Drawing Title:
Front Elevation

Drawing No:
18030-P300

Rev:
A



GENERAL NOTES:
This drawing is copyright of KSR architects. This drawing must be read in conjunction with the Designer's Risk Assessment, specification and all other relevant documentation and drawings.
KSR architects accept no liability for any expense, loss or damage of whatsoever nature and however arising from any variation made to this drawing or in the execution of the work to which it relates which has not been referred to them and their approval obtained.
Areas are based on uncheckered survey and are approximate only. Do not scale from this drawing or the digital data, only figure dimensions are to be used. Refer to block scale for guidance.
Check all dimensions on site prior to carrying out any works and advise any discrepancy.



Status:
Planning
Scale:
1:50 @A1 1:100 @A3

Project:
69 Avenue Road

Date of first issue:
31/01/20

Drawn By: MF
Checked By: DC

KSR ARCHITECTS & INTERIOR DESIGNERS
KSR Architects LLP
14 Grosvenor Street
London W1K 2ND
t: +44 (0)20 7682 3000
e: info@ksrarchitects.com
www.ksrarchitects.com

Drawing Title:
Rear Elevation

Drawing No:
18030-P301
Rev:
A



GENERAL NOTES:
This drawing is copyright of KSR architects. This drawing must be read in conjunction with the Designer's Risk Assessment, specification and all other relevant documentation and drawings.
KSR architects accept no liability for any expense, loss or damage of whatsoever nature and however arising from any variation made to this drawing or in the execution of the work to which it relates which has not been referred to them and their approval obtained.
Areas are based on uncharted survey and are approximate only. Do not scale from this drawing or the digital data, only figured dimensions are to be used. Refer to block scale for guidance.
Check all dimensions on site prior to carrying out any works and advise any discrepancy.

0 1 2 4m
Scale 1:50 @A1

Rev	Description	Date	By
A	NMA	15.06.23	PBR

© KSR Architects

Status:
Planning
Scale:
1:50 @A1 1:100 @A3

Project:
69 Avenue Road

Date of first issue:
31/01/20

Drawn By:
MF

Checked By:
DC

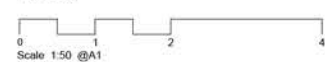
KSR ARCHITECTS &
INTERIOR DESIGNERS
KSR Architects LLP
14 Grosvenor Street
London W1M 0DQ
t: +44 (0)20 7612 3000
e: info@ksrarchitects.com
www.ksrarchitects.com

Drawing Title:
Side Elevation

Drawing No:	Rev:
18030-P302	A



GENERAL NOTES:
This drawing is copyright of KSR architects. This drawing must be read in conjunction with the Designer's Risk Assessment, specification and all other relevant documentation and drawings.
KSR architects accept no liability for any expense, loss or damage of whatsoever nature and however arising from any variation made to this drawing or in the execution of the work to which it relates which has not been referred to them and their approval obtained.
Areas are based on unchecked survey and are approximate only. Do not scale from this drawing or the digital data, only figured dimensions are to be used. Refer to block scale for guidance.
Check all dimensions on site prior to carrying out any works and advise any discrepancy.



Status:
Planning
Scale:
1:50 @A1 1:100 @A3

Project:
69 Avenue Road

Date of first issue:
31/01/20

Drawn By:
MF

Checked By:
DC

KSR ARCHITECTS &
INTERIOR DESIGNERS
KSR Architects LLP
14 Grosvenor Street
London W1M 0DQ
t: +44 (0)20 7682 3000
e: info@ksrarchitects.com
www.ksrarchitects.com

Drawing Title:
Side Elevation

Drawing No:
18030-P303

Rev: