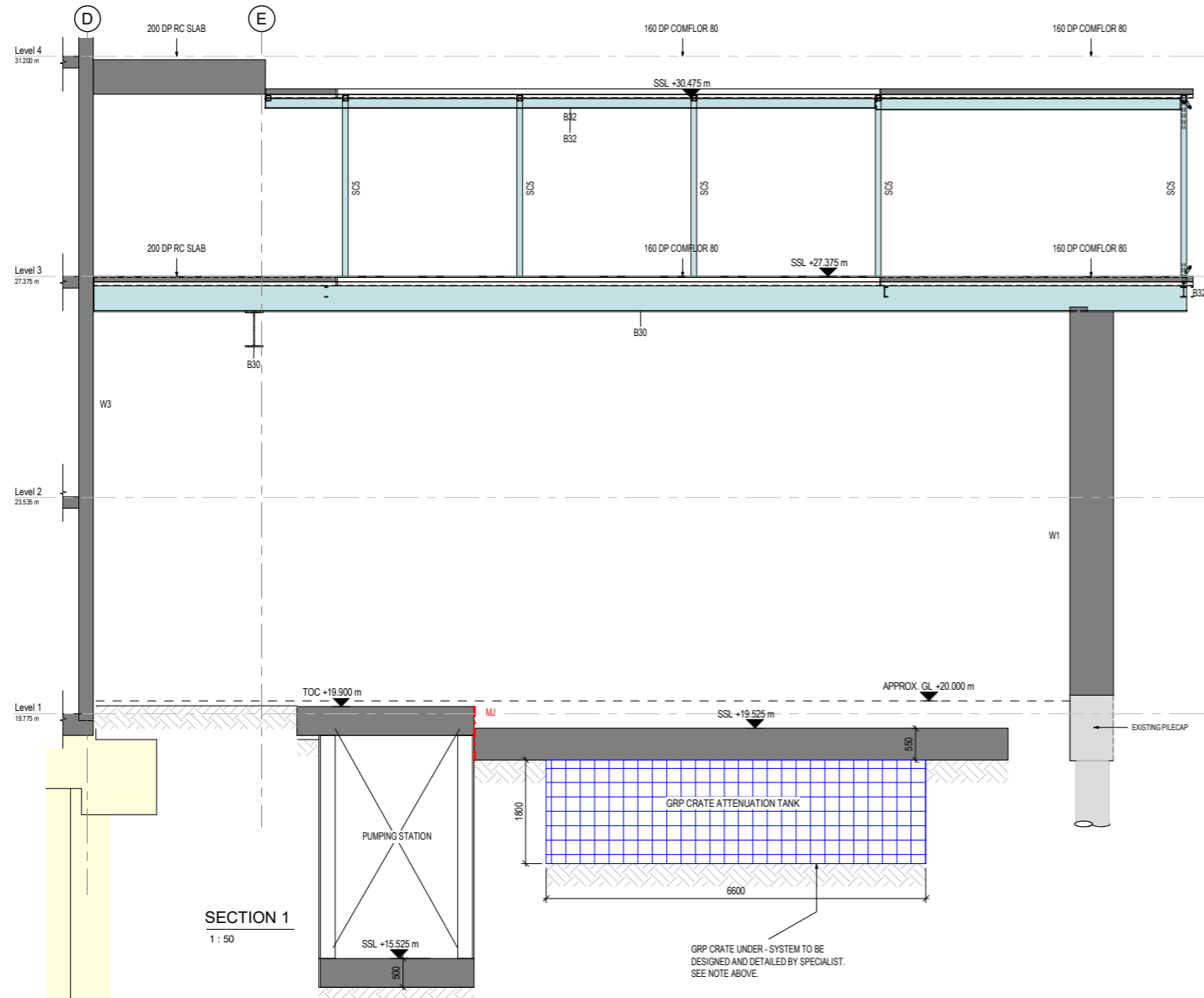


Note:
BDP do not recommend the use of crated attenuation tanks in areas with high groundwater as there is a risk that workmanship issues during installation can lead to defects in the water protection system, which ultimately causes the tank to leak and require replacement. SISK have instructed the use of a crated system due to construction risks associated with other solutions.

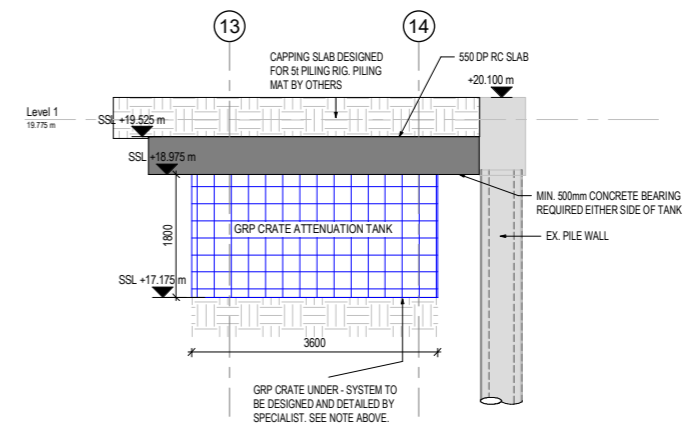
It should be noted that the design responsibility for the crated system sits fully with the crate supplier. BDP will provide actions, loads and design of the concrete cover slab over the attenuation tank, but the supplier will be fully responsible for the review of this information and the validation of the crate design and the design of the membrane around the crates under these actions, and of the effects of the crates on the soil under.



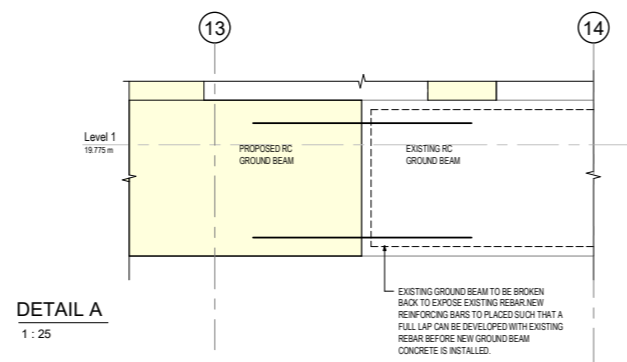
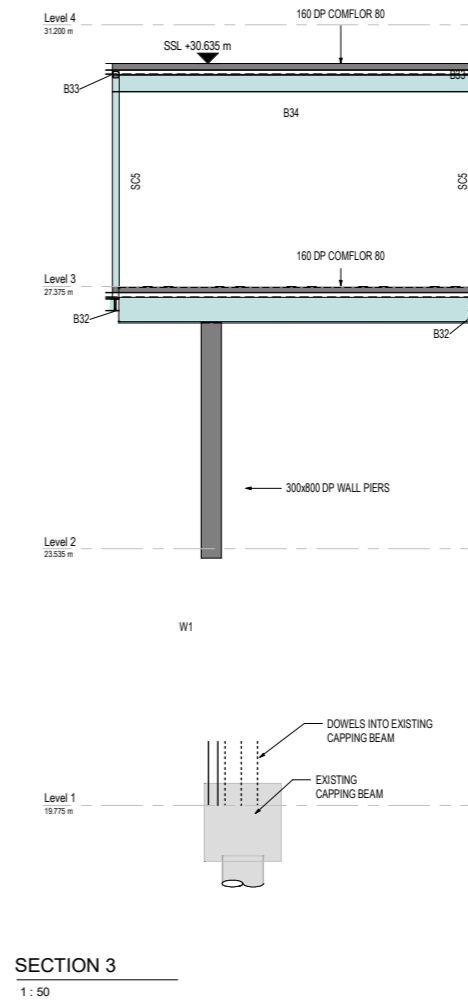
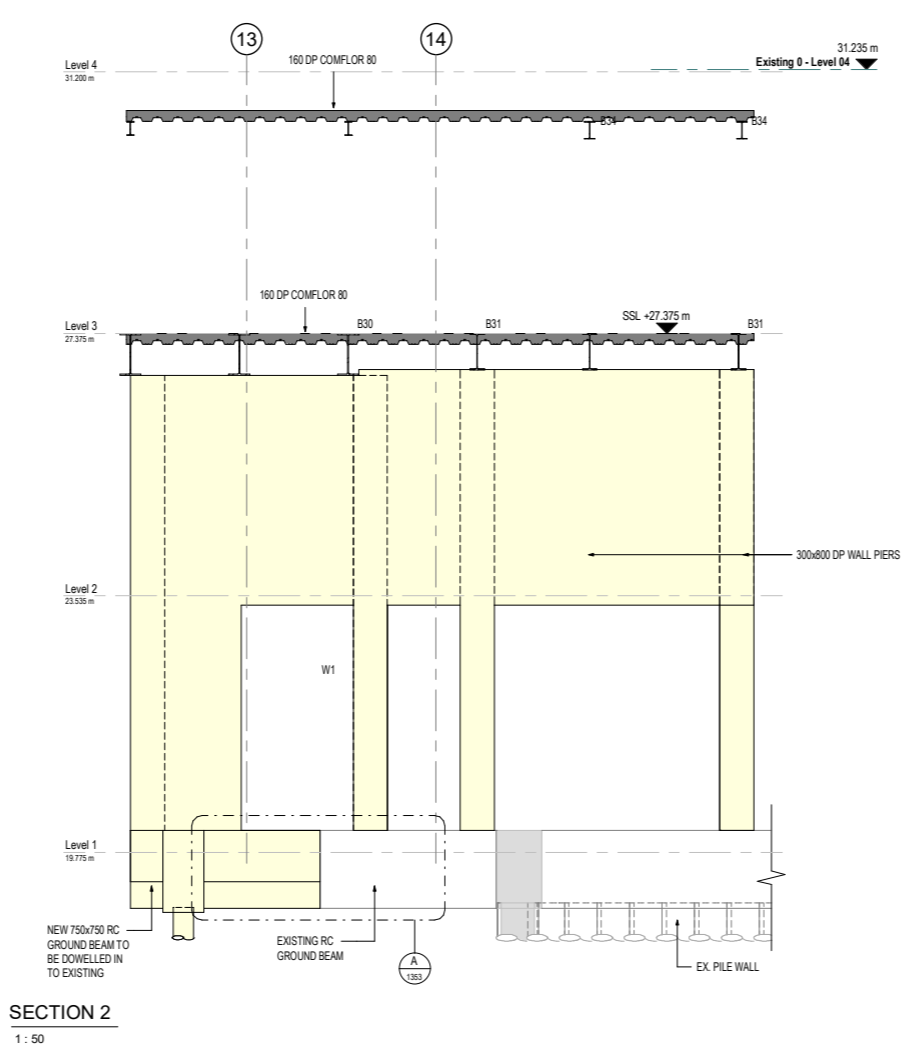
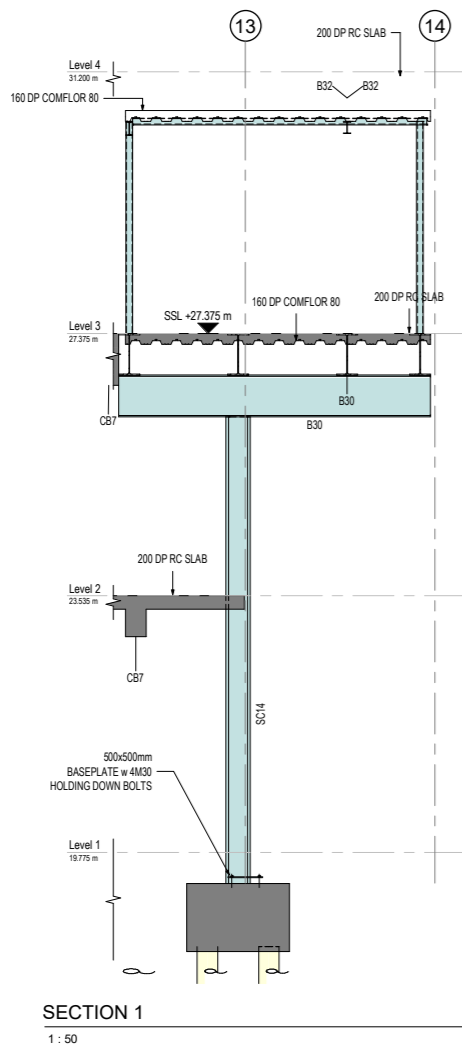
STEEL BEAM SCHEDULE	
MARK	TYPE
B1	UC203x203x46
B2	UKC305x305x198
B3	UKC305x305x137
B5	UKC254x254x89
B6	SHS 80x80x10
B8	UB203x133x25
B9	RHS400x200x10
B10	UKC152x152x23
B11	UKC305x305x240
B12	UKC203x203x100
B13	UC305x305x118
B15	UKC203x203x71
B20	UKC305x305x283
B22	UKC203x203x60
B27	UC305x305x97
B30	UB610x305x149
B31	UB533x210x101
B32	UB178x102x19
B33	SHS100x100x10
B34	UB254x146x37
B35	SHS100x100x8
B36	UB914x419x343
B37	UB914x419x388
B38	UKPFC150x90x24
B39	UC152x152x37
B40	SHS200x200x12.5
B41	SHS300x300x12.5

LEGEND	
	IN SITU CONCRETE IN SECTION
	IN SITU CONCRETE SURFACE
	STEEL SURFACE

STEEL COLUMN SCHEDULE	
MARK	TYPE
SC1	UKC152x152x23
SC3	UC152x152x37
SC4	UKC203x203x60
SC5	SHS 100x100x10
SC9	UKC254x254x132
SC13	SHS100x100x8
SC14	UC305x305x240
SC15	CHS457x10
SC16	RHS200x100x12.5
SC17	SHS200x200x12.5
SC18	SHS300x300x12.5



SECTION 2
1 : 50



STEEL BEAM SCHEDULE	
MARK	TYPE
B1	UC203x203x46
B2	UKC305x305x198
B3	UKC305x305x137
B5	UKC254x254x89
B6	SHS 80x80x10
B8	UB203x133x25
B9	RHS400x200x10
B10	UKC152x152x23
B11	UKC305x305x240
B12	UKC203x203x100
B13	UC305x305x116
B15	UKC203x203x71
B20	UKC305x305x283
B22	UKC203x203x60
B27	UC305x305x97
B30	UB610x305x149
B31	UBS33x210x101
B32	UB178x102x19
B33	SHS100x100x10
B34	UB254x146x37
B35	SHS100x100x8
B36	UB914x419x343
B37	UB914x419x388
B38	UKPFC150x90x24
B39	UC152x152x37
B40	SHS200x200x12.5
B41	SHS300x300x12.5

LEGEND	
	IN SITU CONCRETE IN SECTION
	IN SITU CONCRETE SURFACE
	STEEL SURFACE

STEEL COLUMN SCHEDULE	
MARK	TYPE
SC1	UKC152x152x23
SC3	UC152x152x37
SC4	UKC203x203x60
SC5	SHS 100x100x10
SC9	UKC254x254x132
SC13	SHS100x100x8
SC14	UC305x305x240
SC15	CHS457x10
SC16	RHS200x100x12.5
SC17	SHS200x200x12.5
SC18	SHS300x300x12.5



NHS

Great Ormond Street
Hospital for Children
NHS Foundation Trust



BDP.