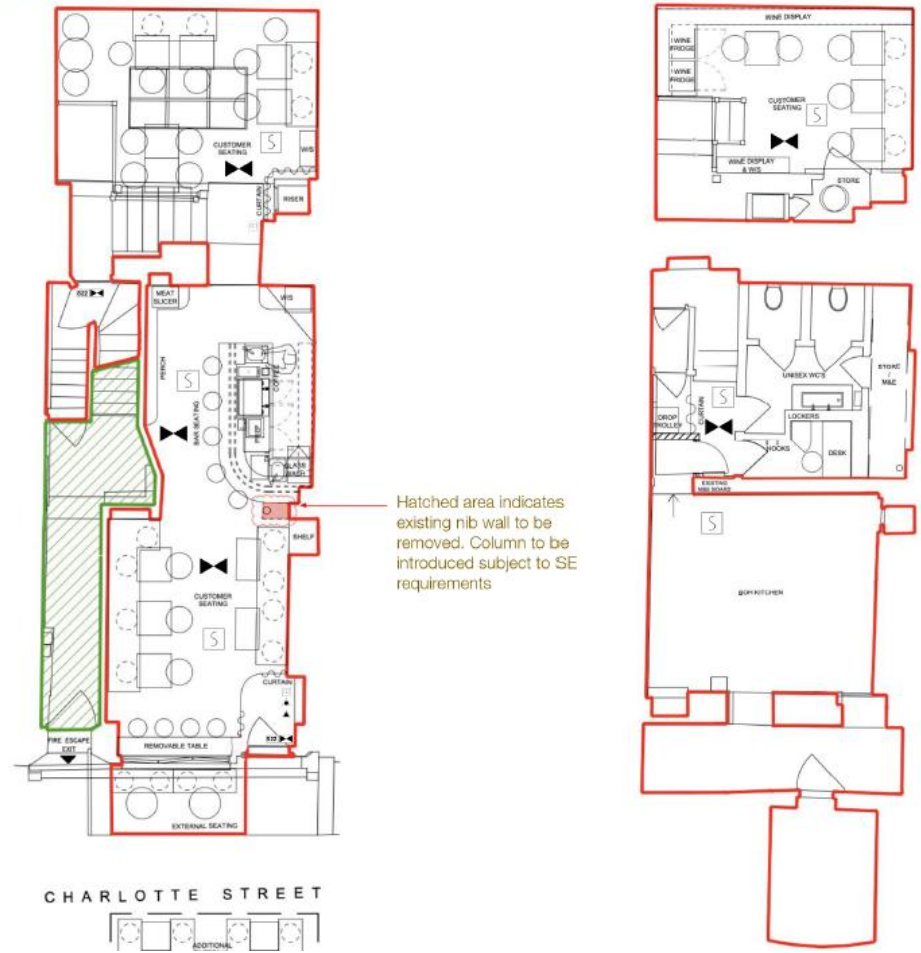


GENERAL ARRANGEMENT



LEGEND	
	Fire Alarm Call Point with Fire Action Sign adjacent
	Carbon Dioxide Fire Extinguisher
	Carbon Dioxide Fire Extinguisher
	Area covered with a system of Escape Lighting that will illuminate the area upon failure of the normal lighting power supply, to a sufficient standard to enable persons to leave the area safely.
	Area covered by Automatic Smoke Detectors
	Internally luminated fire exit notice
	Area for licensable activities