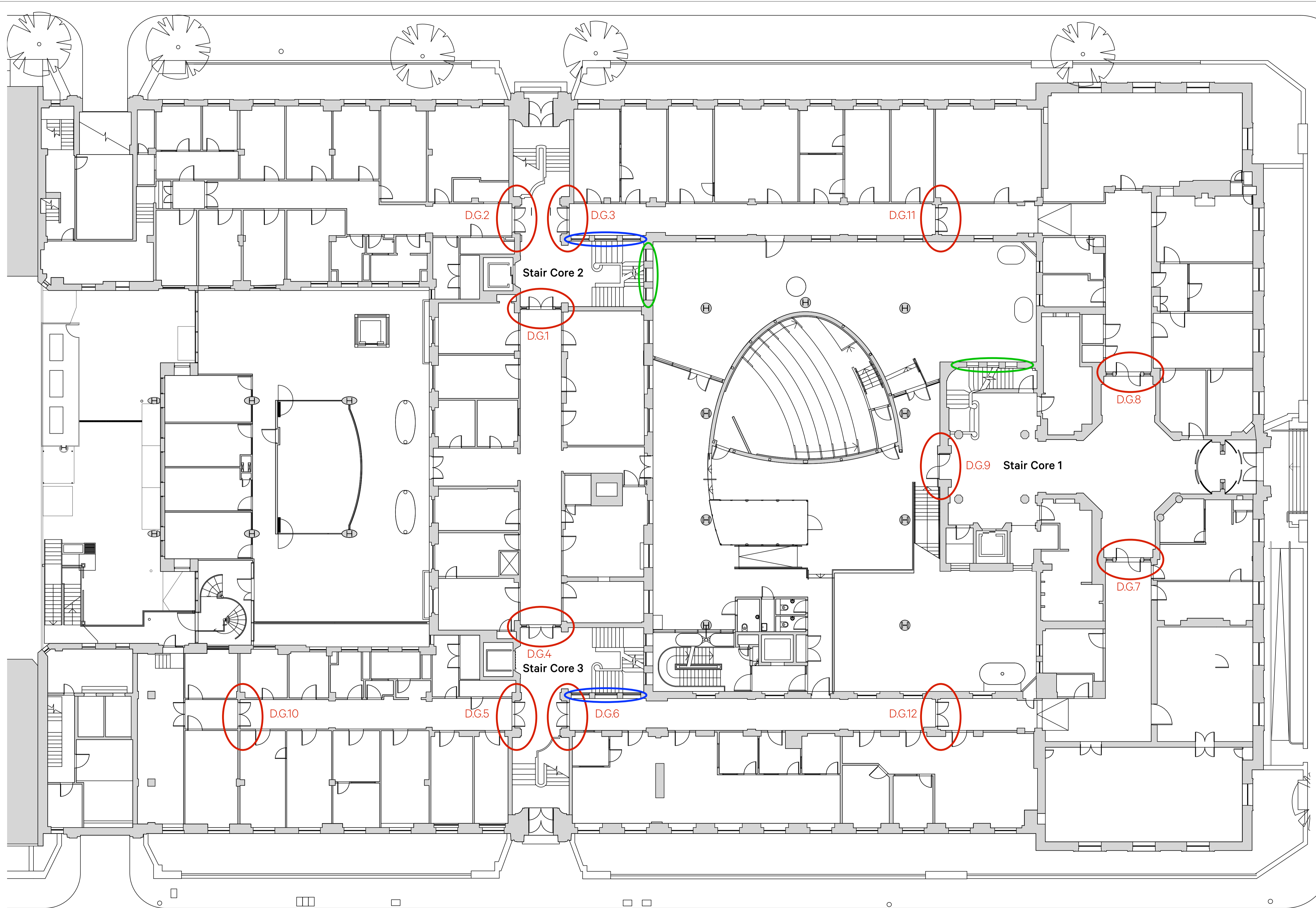


GROUND FLOOR

KEY

Doors and windows identified for refurbishment:

- Windows: Type 1
- Windows: Type 2
- Doors



1 KEY PLAN: Ground Floor
1:250 @ A3

Revision	Date	Amendment	Notes	Client	Project	Drawing	Scale	Date	Drawn	CR	Project N°	Drawing N°	Revision
B	11/10/23	Planning Issue		London School of Hygiene & Tropical Medicine	Phase 3 Internal Fire Strategy	Key Plan: Ground Floor	1:125 @ A1 / 1:250 @ A3	October 2023		CR	951	951/PL/111	B

Burwell Architects
 info@burwellarchitects.com
 www.burwellarchitects.com
 Unit 001 California Building
 Deans Gateway
 London SE13 7SB
 020 8305 6010

NO DIMENSIONS ARE TO BE SCALED FROM THIS DRAWING. THE CONTRACTOR/MANUFACTURER IS RESPONSIBLE FOR CHECKING ALL DIMENSIONS AND QUERING ANY DISCREPANCIES. THIS DRAWING IS THE PROPERTY OF BURWELL ARCHITECTS LTD. COPYRIGHT IS RESERVED BY THEM AND THE DRAWING IS ISSUED ON CONDITION THAT IT IS NOT COPIED, REPRODUCED, RETAINED OR DISCLOSED TO ANY UNAUTHORISED PERSON, EITHER WHOLLY OR IN PART, WITHOUT WRITTEN CONSENT.