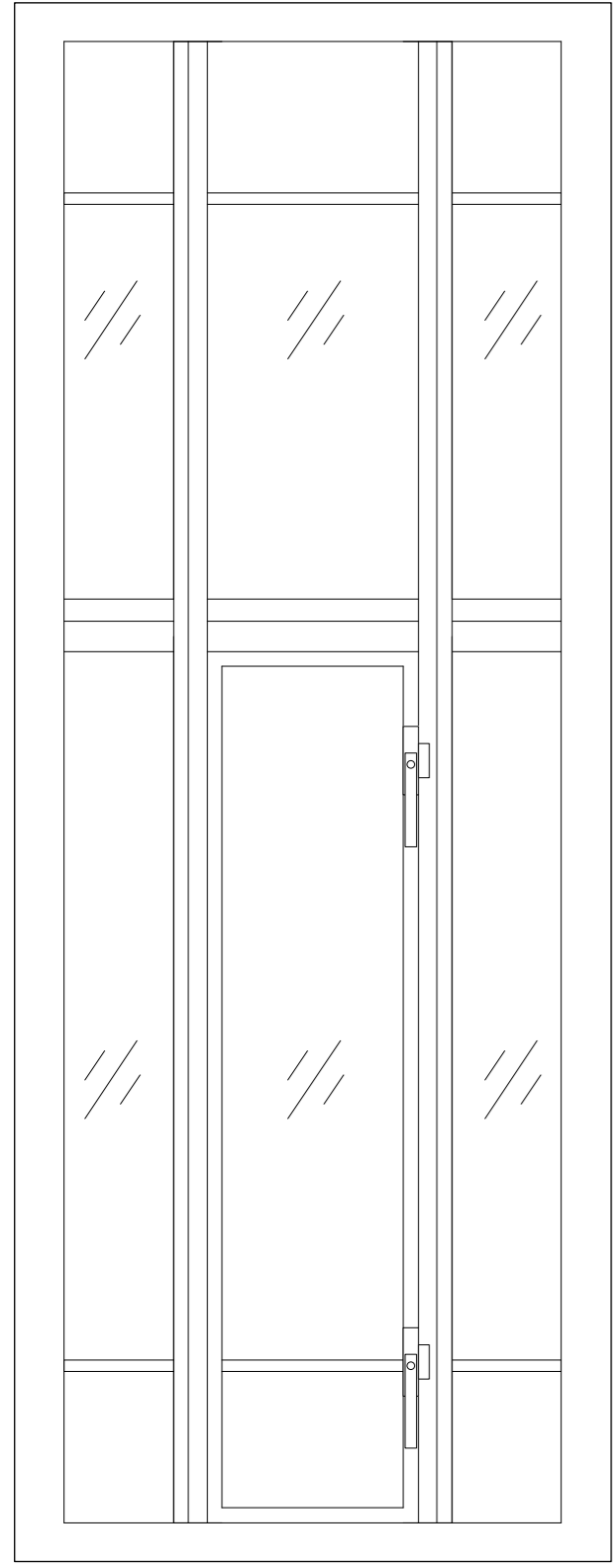
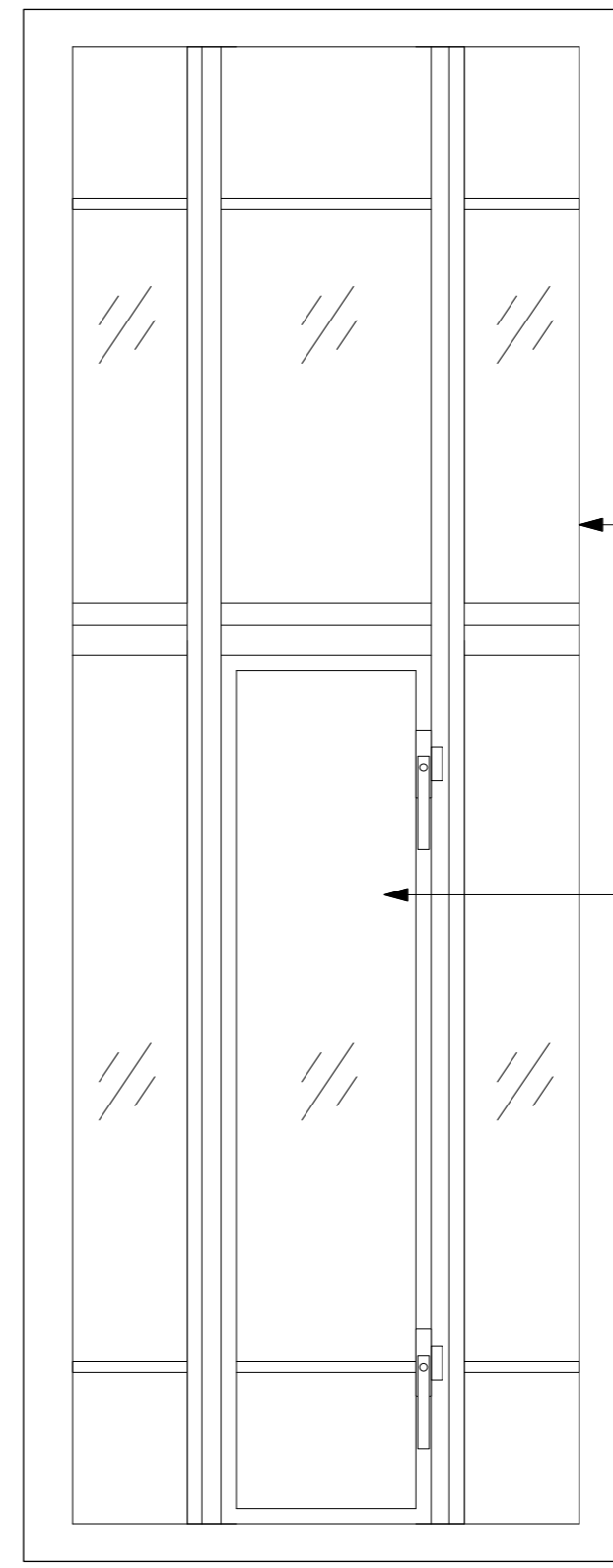


EXISTING

For window locations refer to location key plans (drawing 951/PL/110 - 951/PL/114)



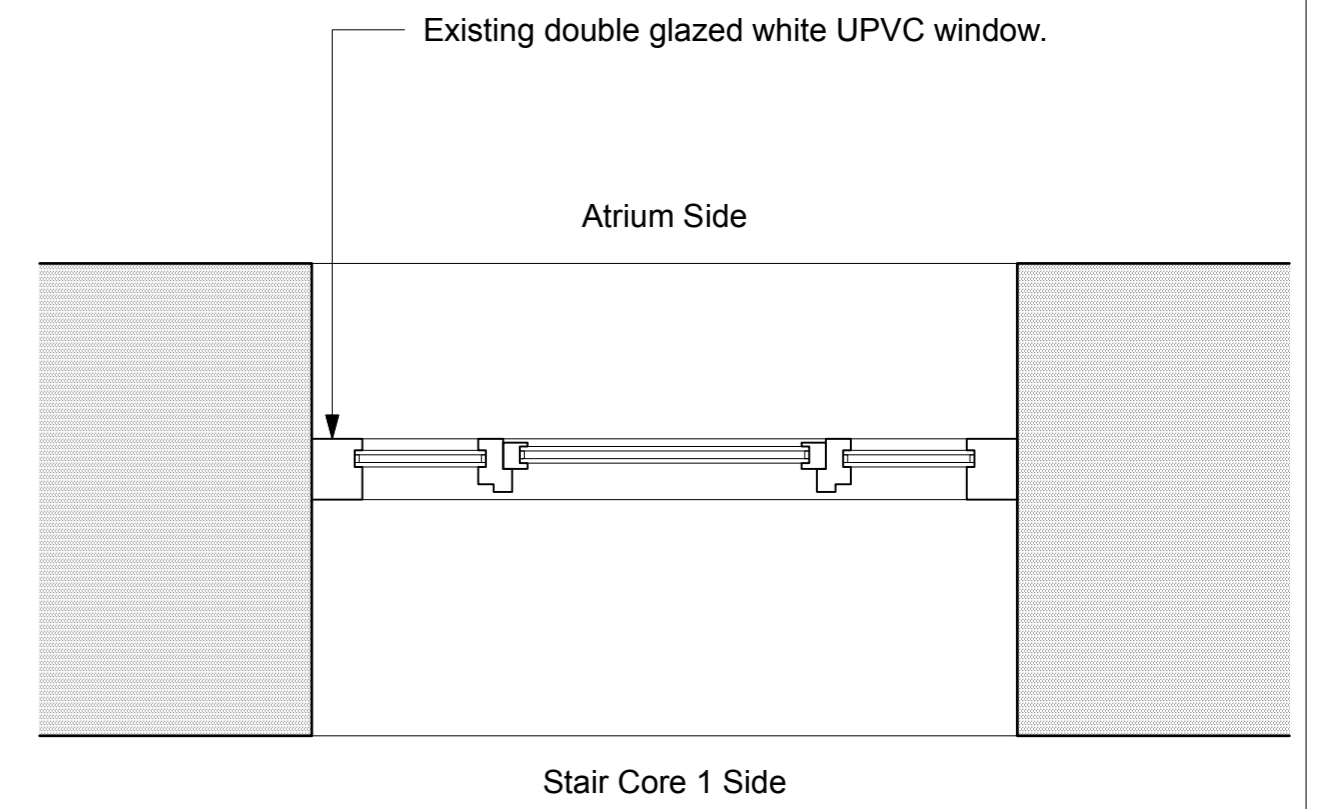
1 Typical Window Elevation: Existing
Scale: 1:20@A3



Existing double glazed white UPVC window.

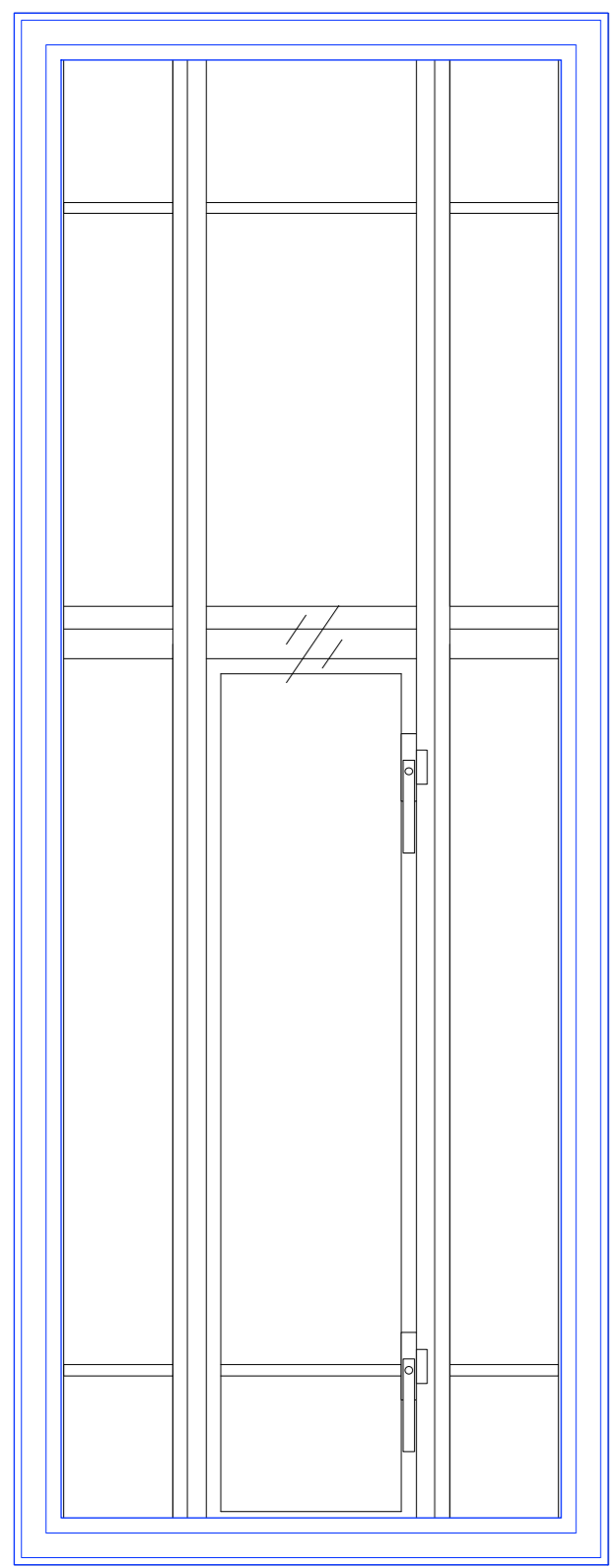
Outward opening window.

WINDOW TYPE 1 Stair Core 2 South-East Windows: Existing and Proposed Details

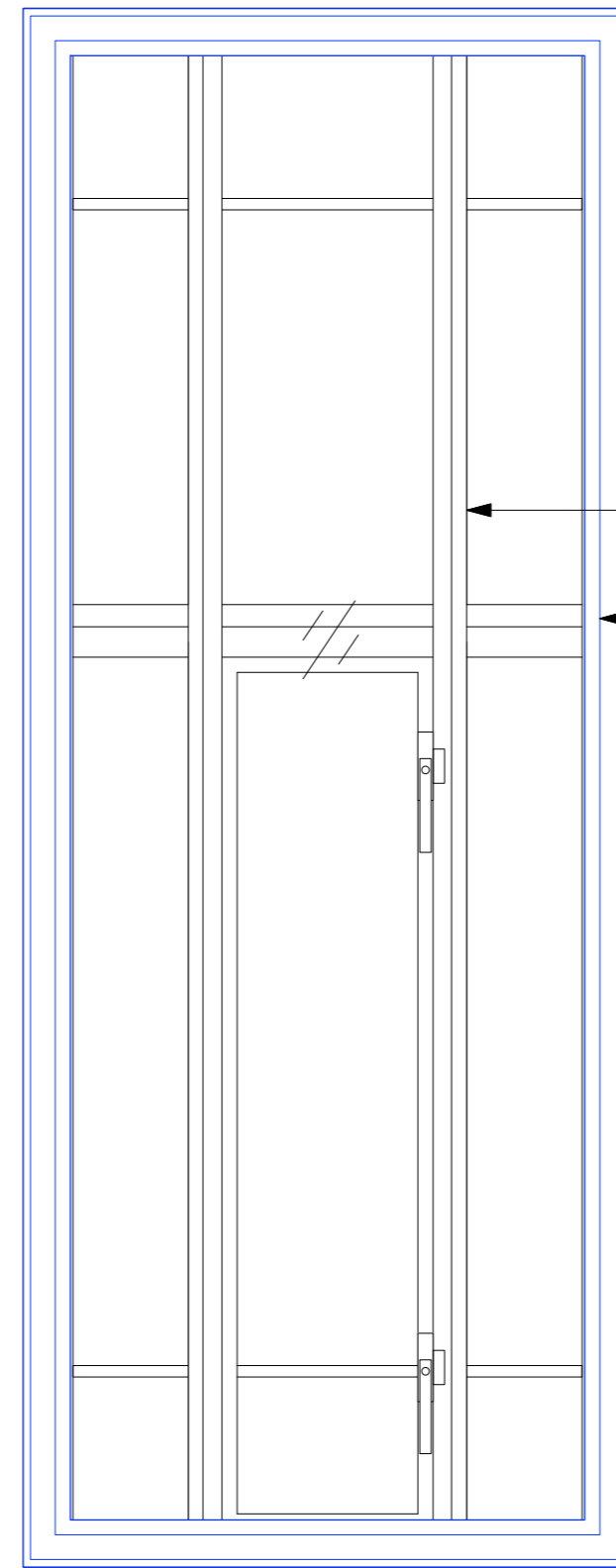
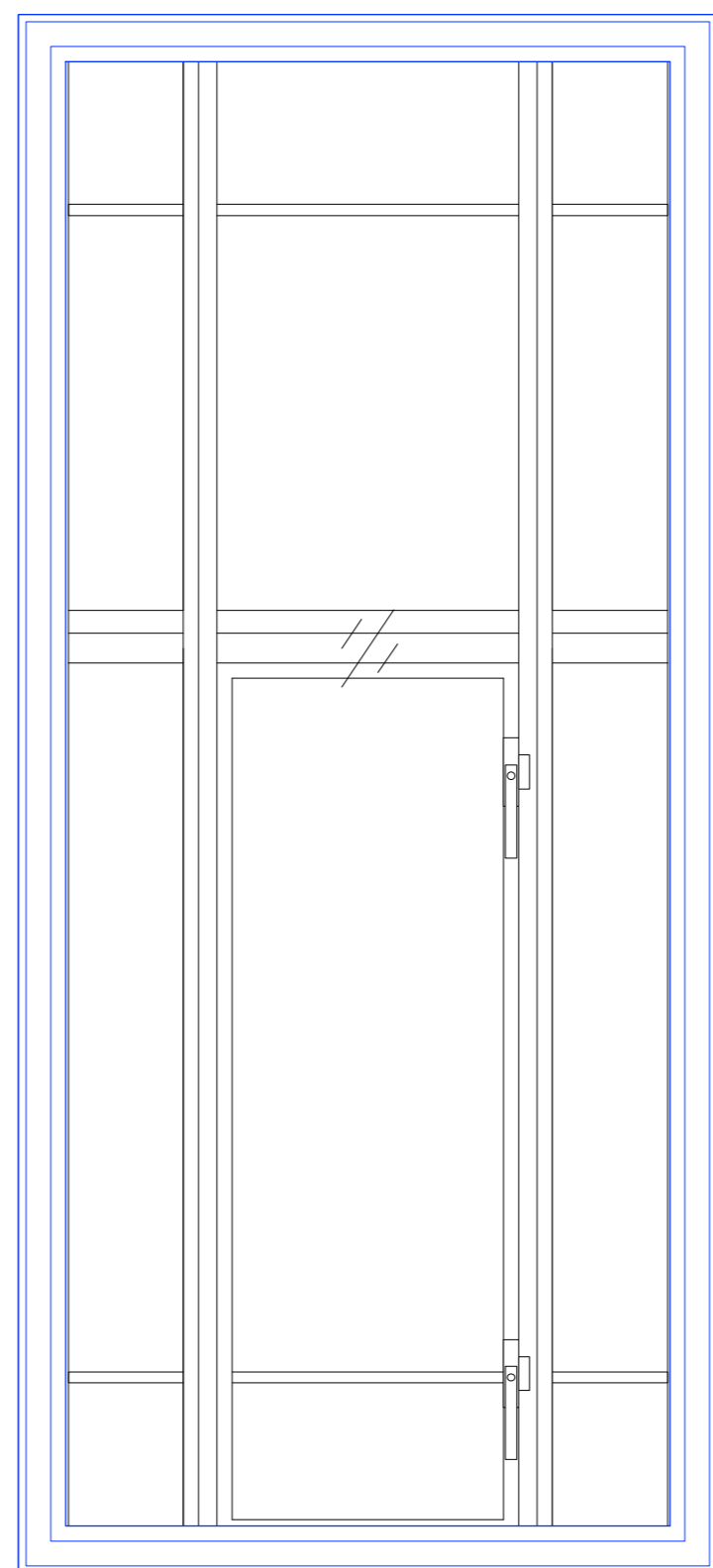


2 Typical Window Plan: Existing
Scale: 1:20@A3

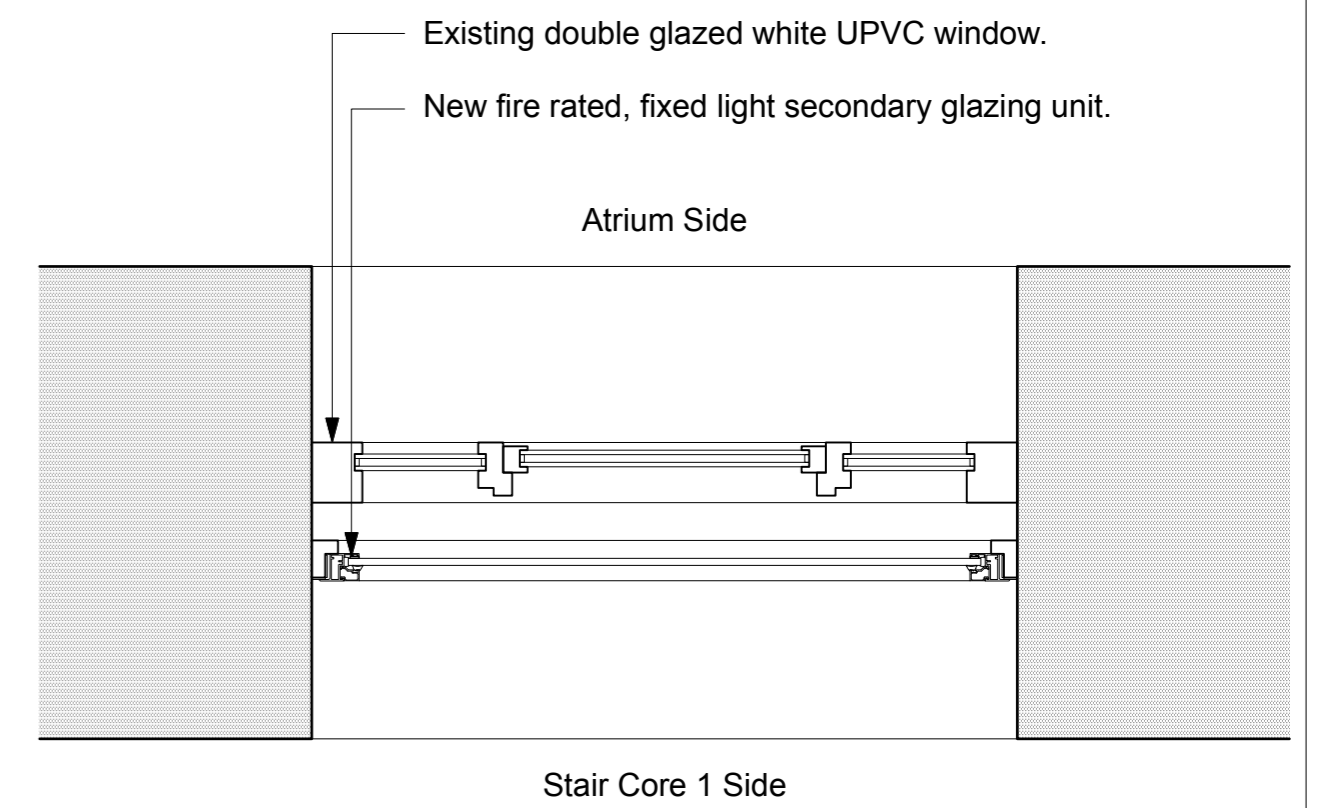
PROPOSED



3 Typical Window Elevation: Proposed
Scale: 1:20@A3



- A) Existing double glazed white UPVC window to be retained and protected throughout proposed works.
- B) New fire rated, fixed light secondary glazing unit. 30 minute fire integrity. Powder coated metal frame, colour to match existing windows.



4 Typical Window Plan: Proposed
Scale: 1:20@A3

Revision	Date	Amendment	Notes	Client	Project	Drawing	Scale	Date	Drawn	Revision
A	11.10.23	Planning Issue	<p>NO DIMENSIONS ARE TO BE SCALED FROM THIS DRAWING. THE CONTRACTOR/MANUFACTURER IS RESPONSIBLE FOR CHECKING ALL DIMENSIONS AND QUERING ANY DISCREPANCIES. THIS DRAWING IS THE PROPERTY OF BURWELL ARCHITECTS LTD. COPYRIGHT IS RESERVED BY THEM AND THE DRAWING IS ISSUED ON CONDITION THAT IT IS NOT COPIED, REPRODUCED, RETAINED OR DISCLOSED TO ANY UNAUTHORISED PERSON, EITHER WHOLLY OR IN PART, WITHOUT WRITTEN CONSENT.</p>	London School of Hygiene and Tropical Medicine	Phase 3 Internal Fire Strategy	Internal Windows Type 1: Sheet 3 of 3	1:20 @ A3	October 2023	TW	A
								info@burwellarchitects.com Unit 001 California Building Davis Gateway London SE13 7SB 020 8305 6010		
				Project N°	Drawing N°	Revision				
				951	951_PL_157	A				