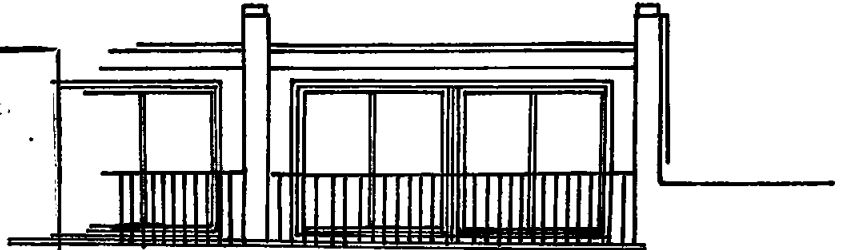
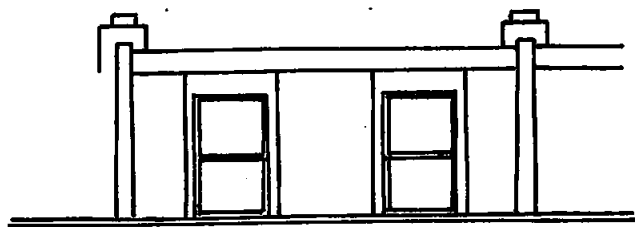


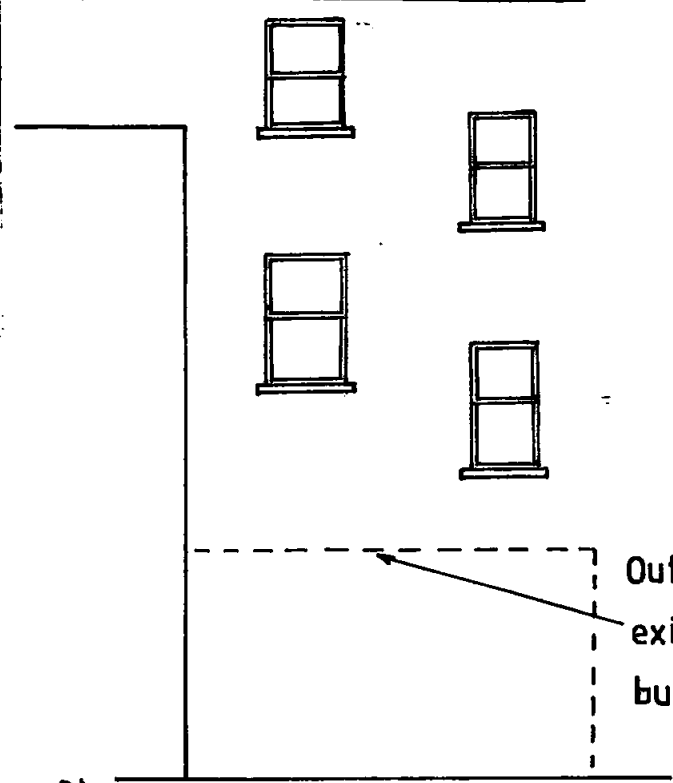
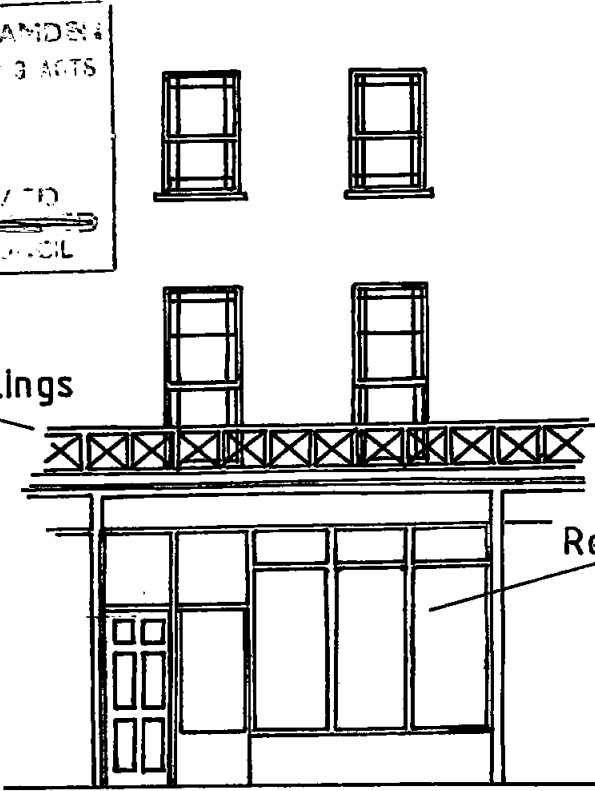
3 MURRAY STREET N.W.1

ELEVATIONS



LONDON BOROUGH OF CAMDEN
PLANNING AND TRANSPORT
DEPARTMENT
10 OCT 1988
RECEIVED

LONDON BOROUGH OF CAMDEN
TOWN & COUNTRY PLANNING ACTS
09 MAY 1989
PLANS
ON BEHALF OF THE COUNCIL



Restored railings

Revised shop front

Outline of existing rear building

Front

Rear

T 8002542

GRAFTON DEVELOPMENTS LTD.

DRG. NO.: 3MSPA3

SCALE: 1/100

DATE: SEPT. 88