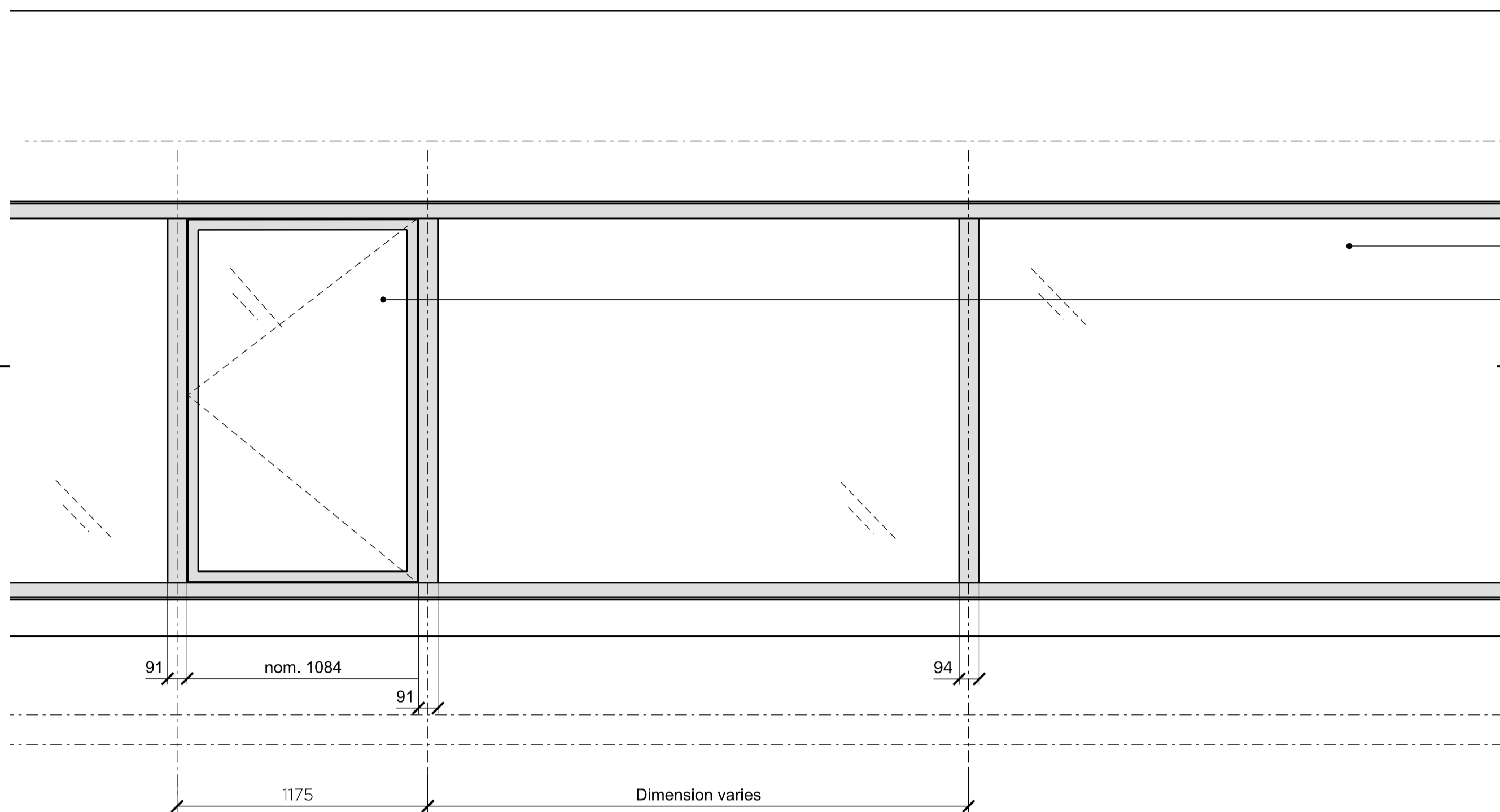


AA [21]
302.01



02 - Proposed West Elevation

U/S Slab +35.310

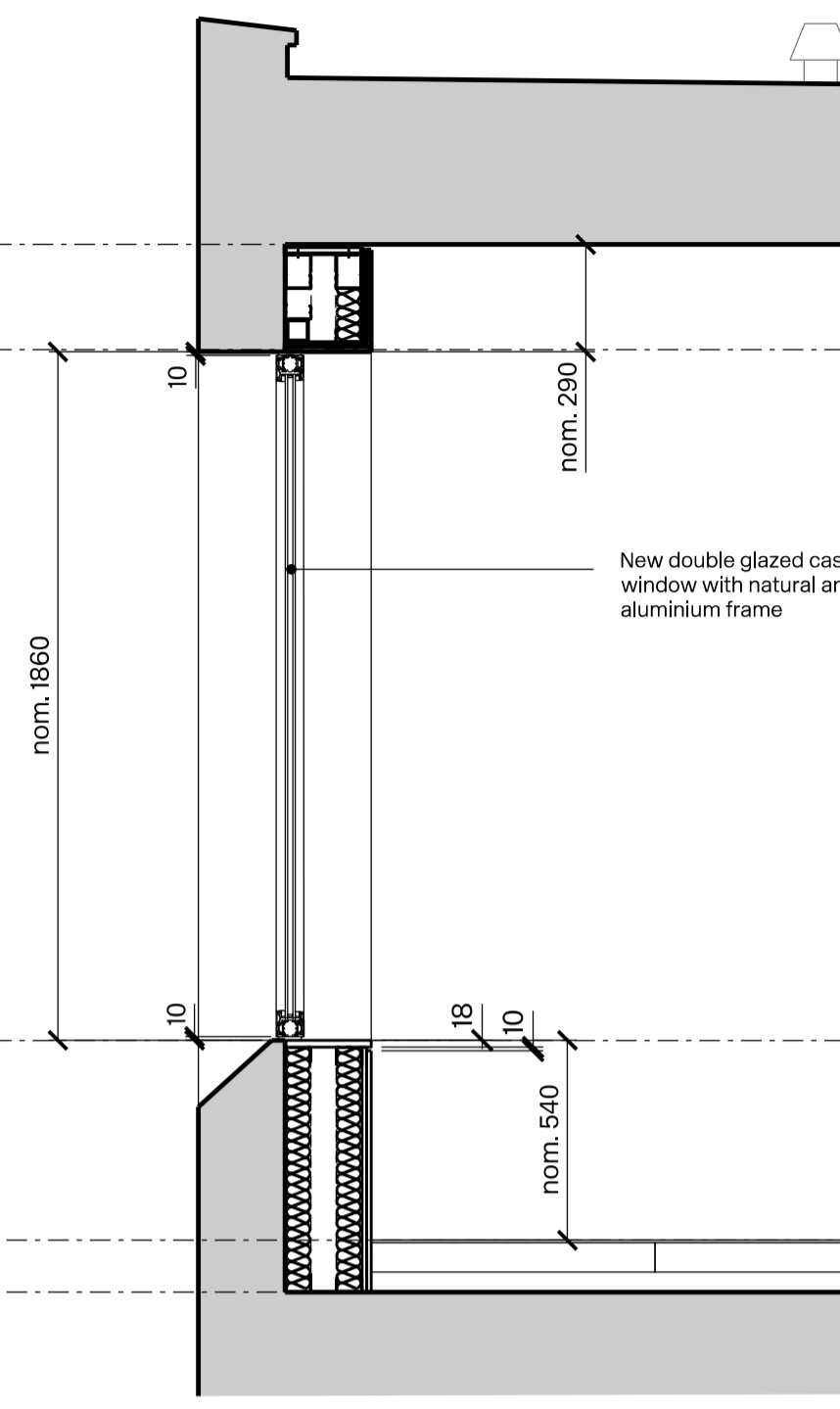
+35.025

New double glazed fixed window with natural anodised aluminium frame
New double glazed casement window with natural anodised aluminium frame

AA [21]
302.01

+36.320

L02 FFL +35.780
L02 SSL +35.640



03 - Typical section through casement window

U/S Slab +35.310

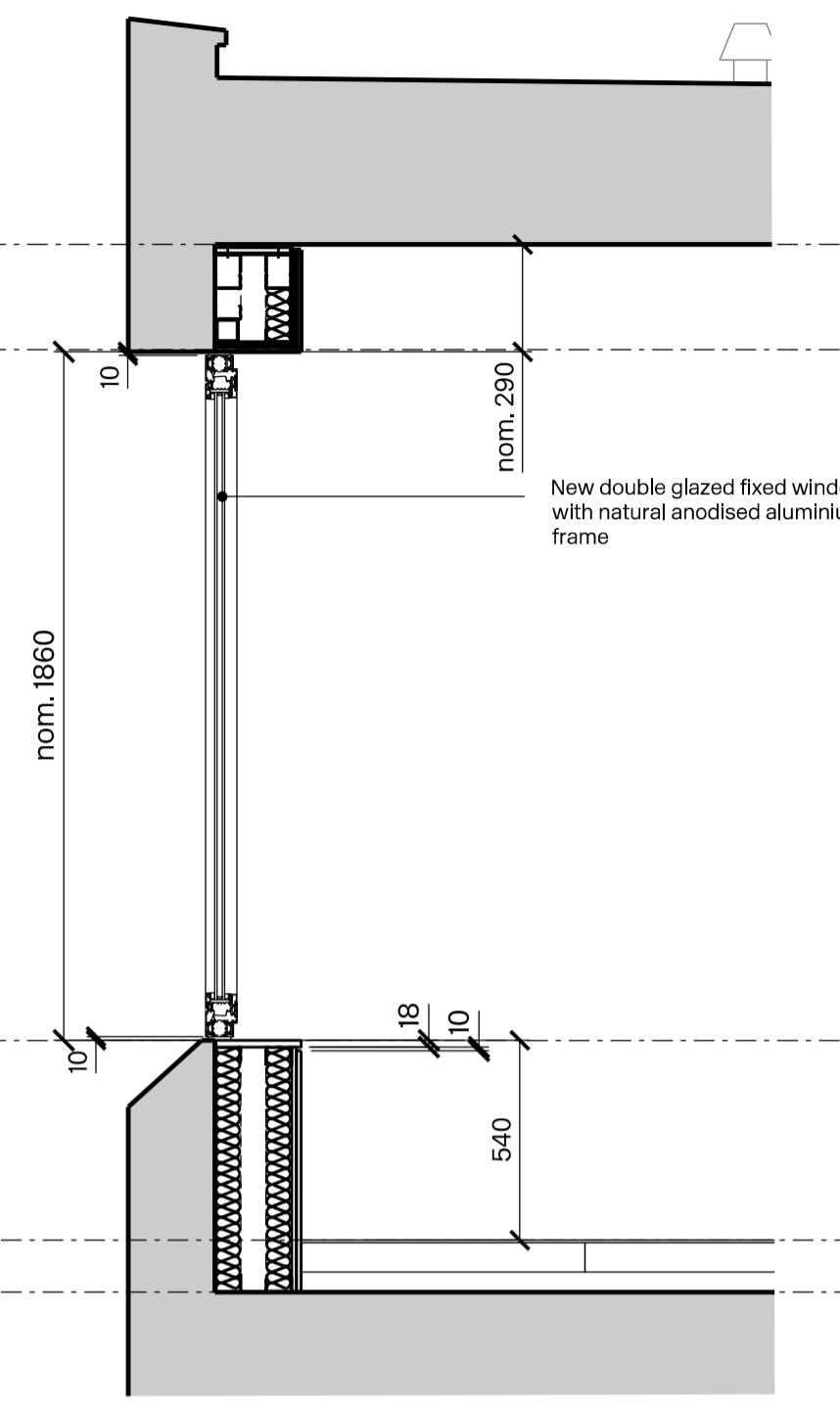
+35.025

New double glazed casement window with natural anodised aluminium frame

AA [21]
302.01

+36.320

L02 FFL +35.780
L02 SSL +35.640



04 - Typical section through fixed glazing

U/S Slab +35.310

+35.025

New double glazed fixed window with natural anodised aluminium frame

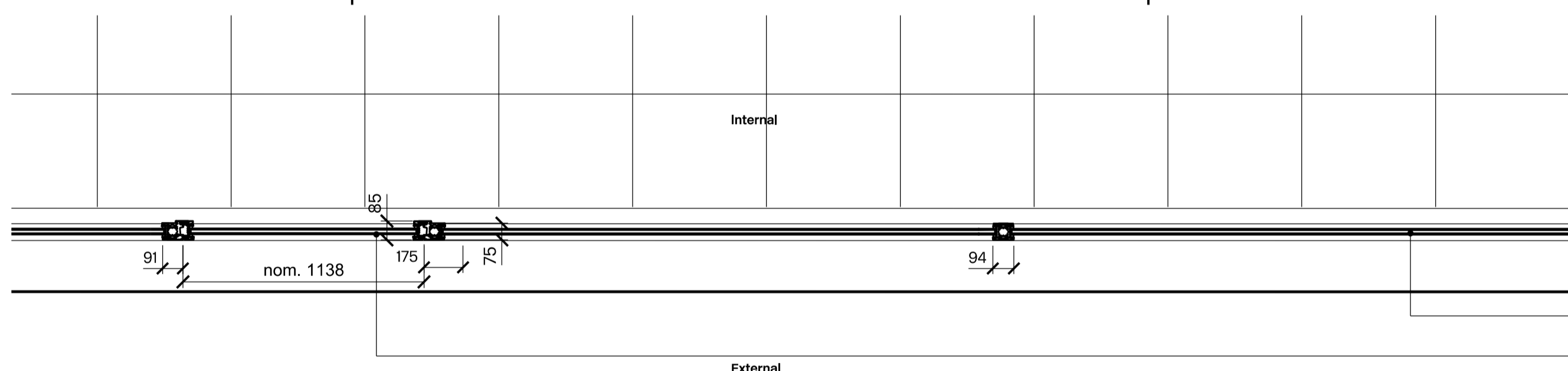
AA [21]
302.01

+36.320

L02 FFL +35.780
L02 SSL +35.640

AA [21]
302.03

AA [21]
302.04



01 - L02 Proposed Plan

New double glazed fixed window with natural anodised aluminium frame
New double glazed casement window with natural anodised aluminium frame



Drawing Notes

Rev	Date	Status	Note
01	27.11.2023	Planning	Drawing Issue

Team

Client: Lazari Investments Ltd
 Architect: Gibson Thornley Architects
 Landscape Architect: Studio ONB
 Graphic Designer: BOB Design
 Structural Engineer: Quadrant Harmon
 Civil Engineer: GLP
 MEP Engineer: GLP
 Fire Consultant: Janson Hughes
 Sustainability Consultant: GLP
 Cost Consultant: C N Associates
 Lighting Consultant: Pritchard Themis
 Planning Consultant: CBRE
 Approved Inspector: Salus
 Project Manager: Cushman & Wakefield

- General Notes**
- Do not scale from this drawing.
 - All dimensions to be checked on site by the contractor and such dimensions to be his responsibility.
 - Report all drawing errors, omissions and discrepancies to the architect.
 - This document may be used in an uncontrolled CAD format to enable others to use it as background information to make alterations and/or additions. In that instance the file will be accompanied by a PDF version. It is for those making such alterations and additions to ensure that they make use of current background information.
 - Gibson Thornley Architects accepts no liability for any such alterations or additions to the background information or arising out of changes to background information which occur prior to alterations or additions being made.

Location



Gibson Thornley

Architects

Job Title: Maple House
 Drawing Title: Proposed L02 Block B Glazing Details
 Drawn by: SB
 Checked by: BG
 Scale: 1:20 @ A1 / 1:40 @ A3
 Status: Planning

Gibson Thornley Architects Limited
 No. 4 The Hangar, Perseverance Works
 25-27 Hackney Road
 London E2 7NX

Project Zone Type Classification Drawing No Revision
 20024B - AA [21] 302 01

+44 (0)20 7729 7064
 www.gibsonthornley.com