



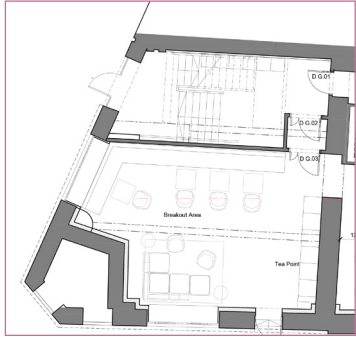
CAST INTERIORS

65 Clerkenwell Road - Exterior Proposal
Legal & General

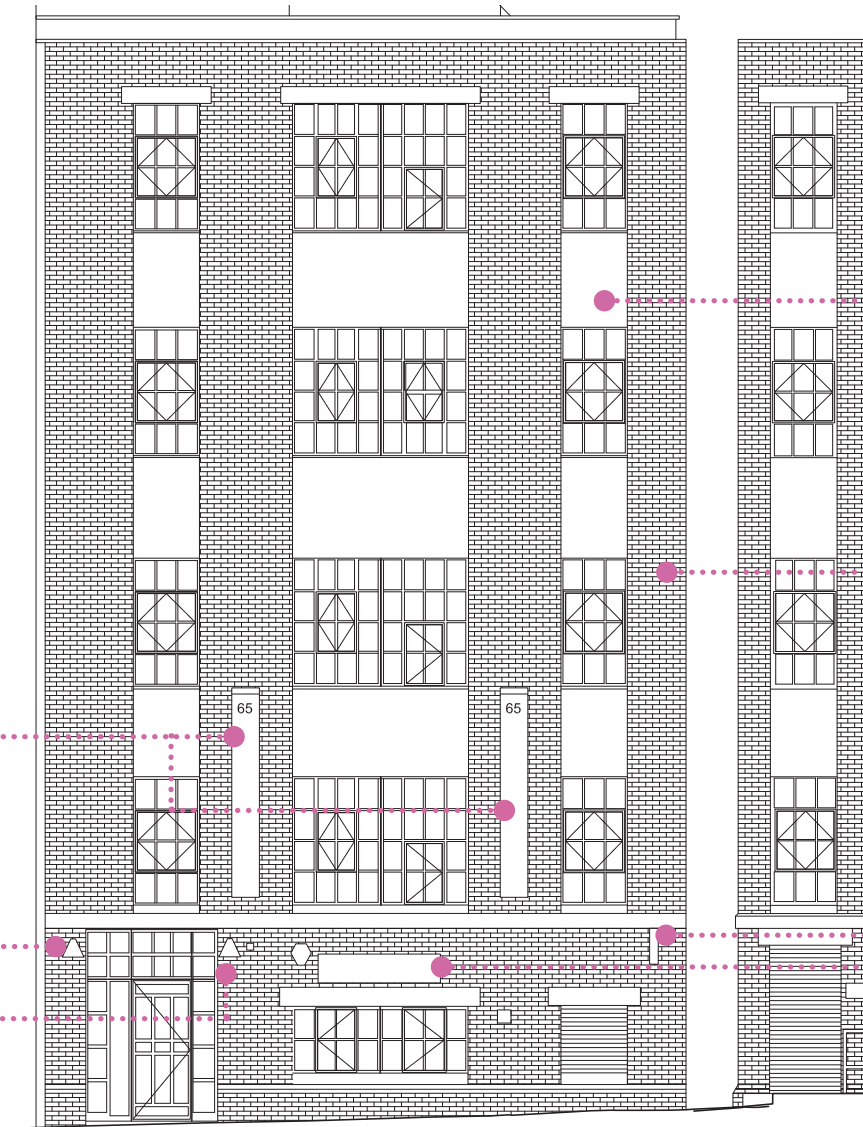
DESIGN

EXTERIOR DESIGN

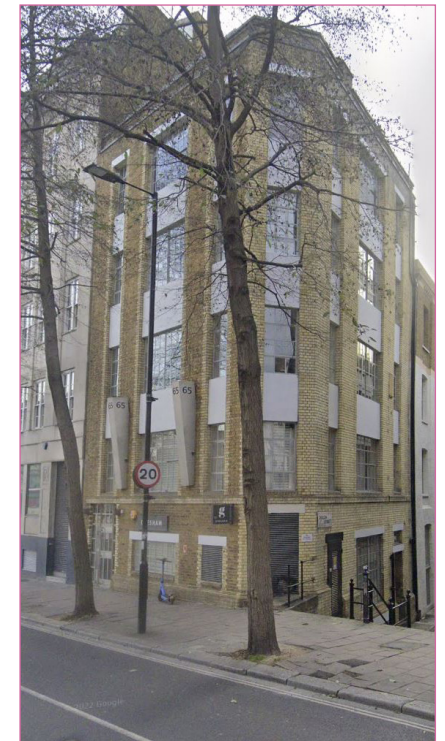
The Façade of 65 Clerkenwell Road is currently dated, and not net zero friendly and does not have a visual impact when walking past. To create an impact from street view the below identifies the areas that need to be demolished.



Plan Location



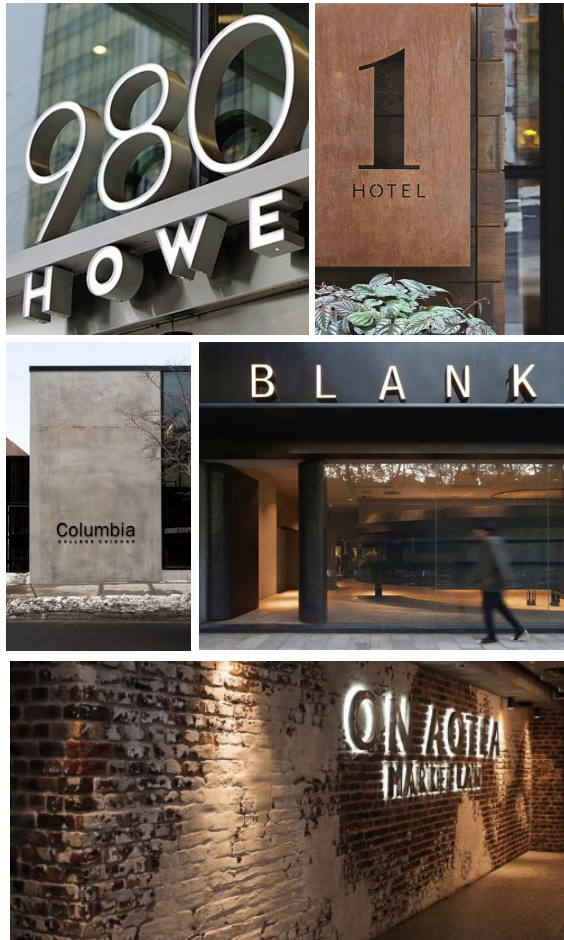
Existing Front & Front Corner Elevation



Existing Façade

LOOK & FEEL CONCEPT IMAGES

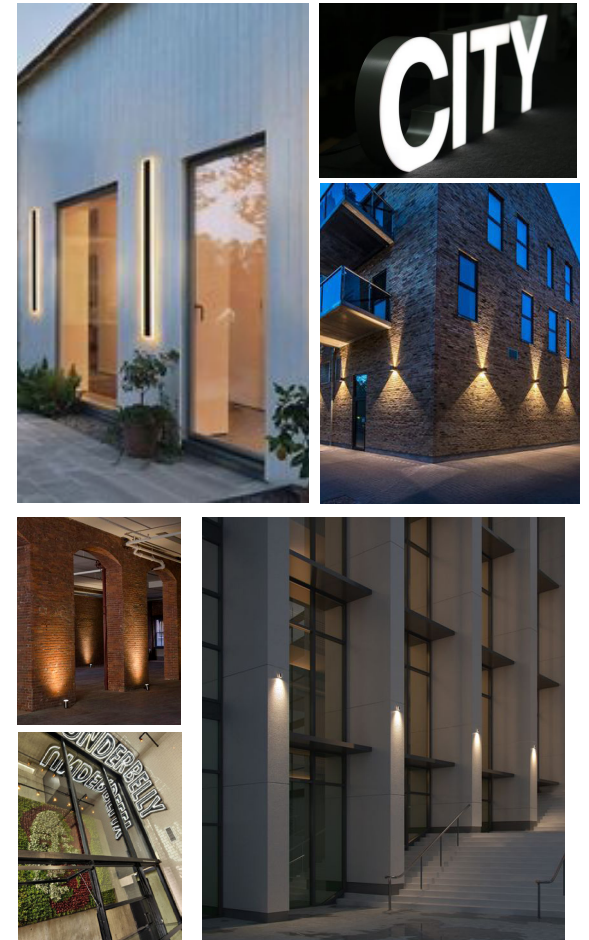
EXTERNAL SIGNAGE



PROJECTING SIGN



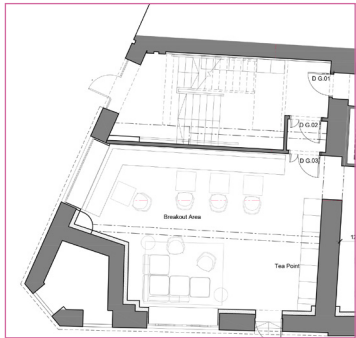
EXTERIOR LIGHTS



DESIGN

EXTERIOR SIGNAGE

Using the industrial features and bring them to the façade of the building makes the street view the start of at the journey into the 65 Clerkenwell road. Honing in on the copper finishes along with the use of multi directional lighting and feature linear lights to create an effective visual from street view and making the building noticeable.



Plan Location

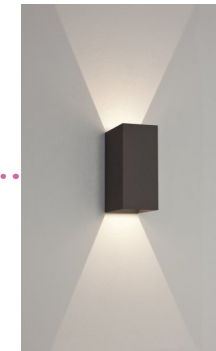
All existing bricks to be cleaned and re-pointed if required



Painted Exterior Panels In Ral 9004



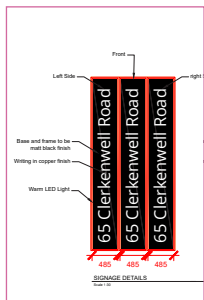
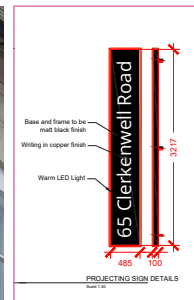
Proposed Front Elevation Sketch



Black linear Lights with Warm Led Lighting



Projecting Sign, Matt Black with Copper Writing



Black linear Lights with Warm Led Lighting



Copper Plaque Matt black with tenant details

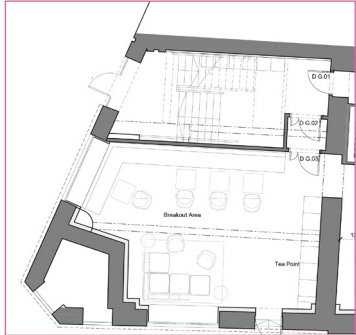


Copper Number



Black linear Lights with Warm Led Lighting

DESIGN TECHNICAL DRAWING



Plan Location



Copper Finish for Writing and Signage



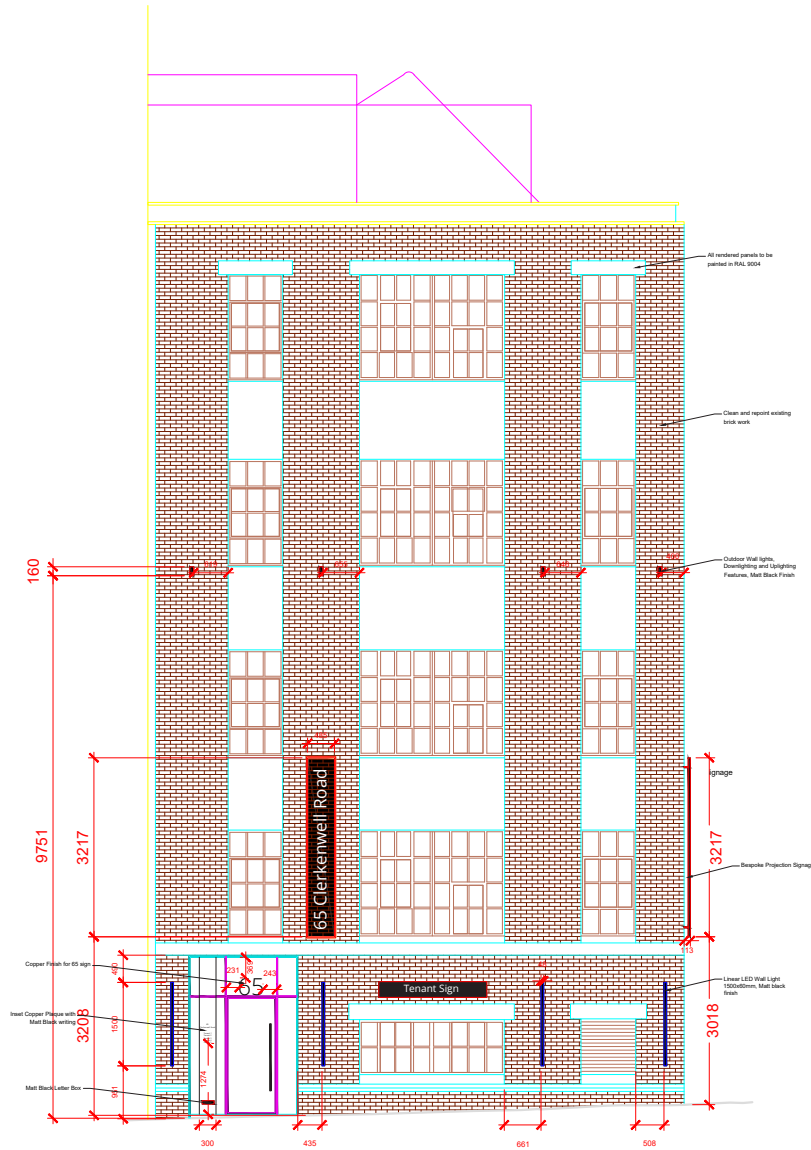
Astro Oslo LED Outdoor Wall Light, Matt Black Finish, warm white light



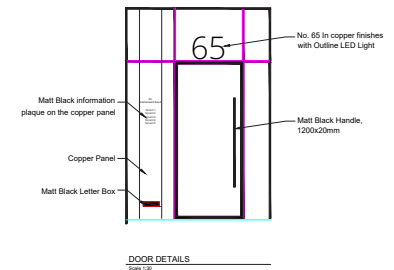
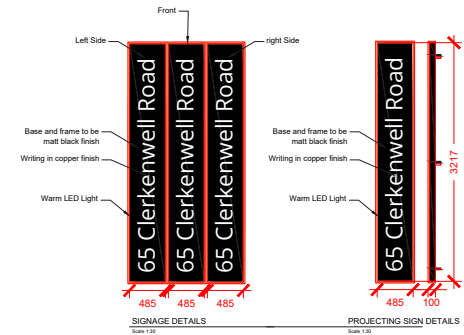
Linear Lights 1500x60, Edge outdoor waterproof wall lamp, warm white light, Matt Black finish



Exterior Panels painted RAL 9004



Elevation Front Facade
Scale 1:40



DOOR DETAILS
Scale 1:30

Contact Us

Email. hello@castinteriors.uk
Call. 020 3877 0956

Zoe Moss | Managing Director

zoe@castinteriors.uk
07786 520306

Étáin Neary | Design Director

etain@castinteriors.uk
07500 136848



Follow Us

Insta. [@castinteriorsuk](https://www.instagram.com/castinteriorsuk)
LinkedIn. [castinteriorsuk](https://www.linkedin.com/company/castinteriorsuk)

Find Us

6-8 Bonhill Street
London
EC2A 4BX

