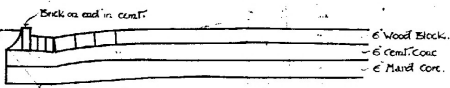
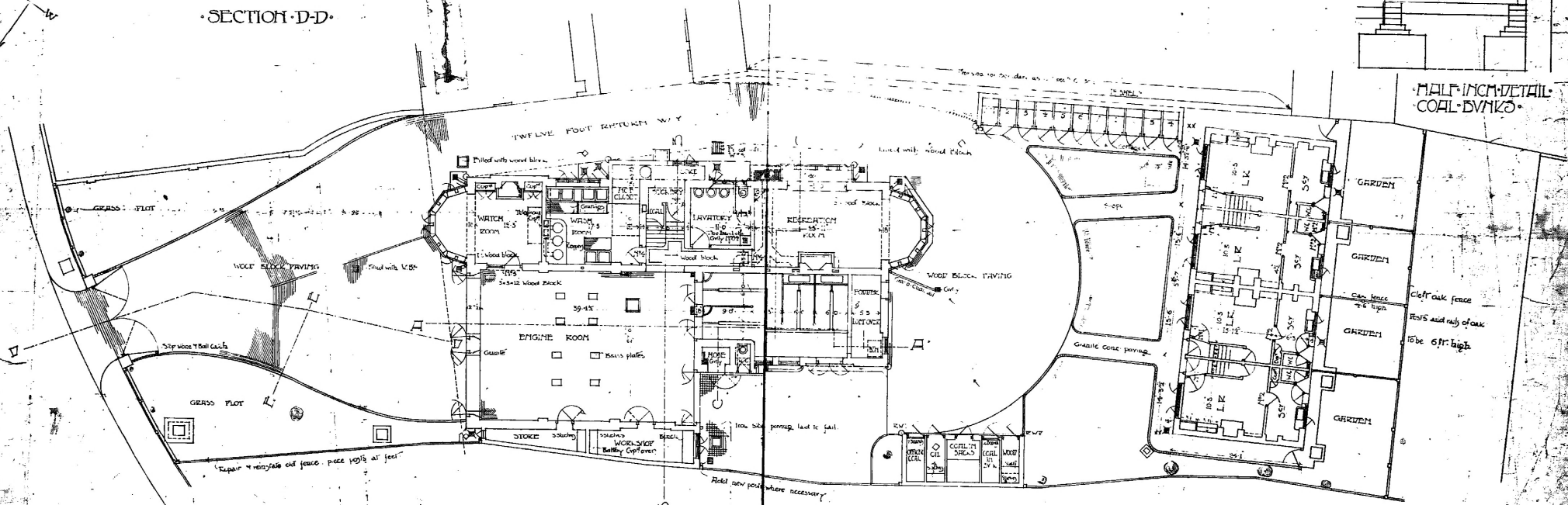
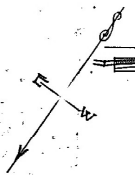
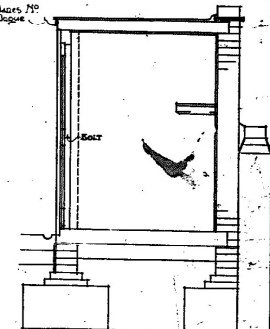
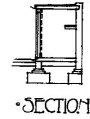
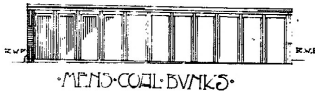


LONDON COUNTY COUNCIL FIRE BRIGADE STATION
 WEST HAMPTON N.W.

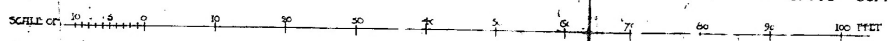
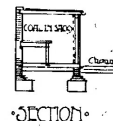
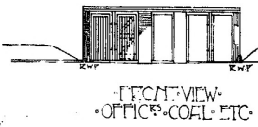
ACCOMMODATION
 12 MEN
 20 CARRIAGES
 9 HORSES
 4 HORSES
 1 HORSE
 1 HORSE
 1 HORSE
 1 HORSE

No. 7

SECTION D-D



GROUND AND SITE PLAN



LONDON COUNTY COUNCIL
 ARCHITECTS
 1905

ARCHITECT'S RECORDS
 RETURNED
 RECORDS (PLAN
 COUNTY HALL S.E.1