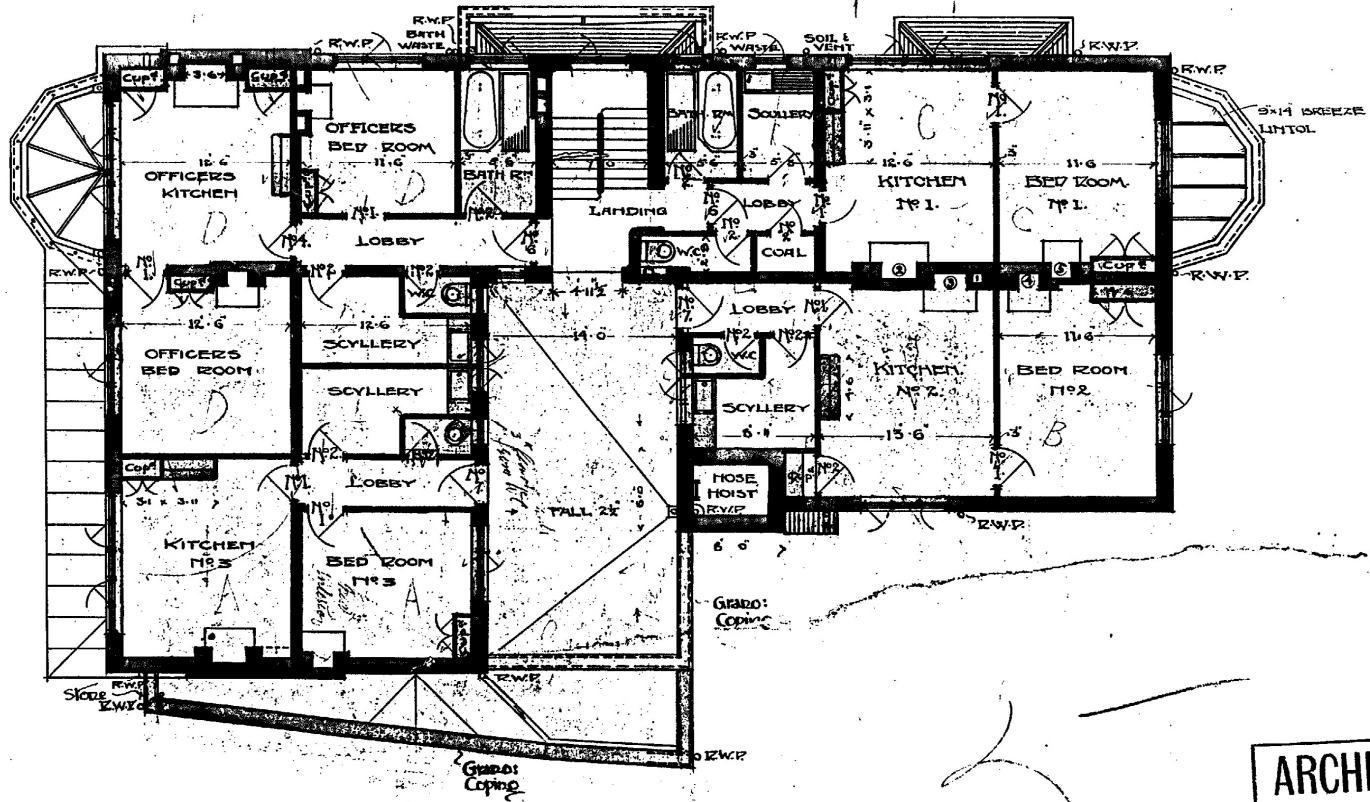


WEST:HAMPSTEAD:F.B.S.:

ARCHITECT'S PLAN ROOM,
COUNTY HALL, S.E.1.

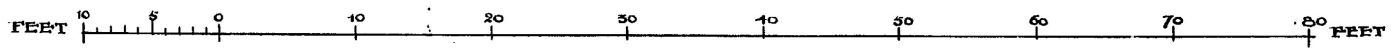
Nº 9



FIRST FLOOR PLAN

ARCHITECT'S RECORDS
 THIS DRAWING MUST BE RETURNED
 TO THE ARCHITECT'S PLAN ROOM,
 COUNTY HALL, S.E.1.

Original in S.L.R.C.



July 900.
72 764.

LONDON COUNTY COUNCIL
 ARCHITECT'S RECORDS
 & PLAN ROOM
 27 APR 1953
 S.B.B. COUNTY HALL, S.E.1.
 C1 702

Super

4889