

File Note

Project	KX Bridge
Subject	Refuse & Recycling Storage
Date	27 january 2017
File ref	1209/7.1/170127/

- Reference made to Camden Waste Storage Requirements (downloaded from the website).

- Areas:

Ground floor	=	3,390 ft² approx (A1/ A3 use)
First floor	=	4,425 ft² approx (B1 use)
Second floor	=	4,425 ft² approx (B1 use)
Total	=	12,240ft² approx

- Roughly 1m3 (1000 litres) of storage for every 3000 to 5000ft2 of floor area.
Therefore 3m3 is sufficient = 3 x 1100 litre Eurobins (1260mm wide x 990mm deep) to be provided.

- Consideration to be given to separate storage for recyclable materials

2 x 660 litre Eurobins (1260mm wide x 730mm deep) to be provided.

- The 1st and 2nd floors offices are linked with an accommodation stair through a void in the 2nd floor slab so can be considered as one space. An alternate arrangement would be to provide:

2 x 1100 litre and 1 x 660 litre bins for refuse
1 x 1100 litre and 1 x 660 litre bins for recycling

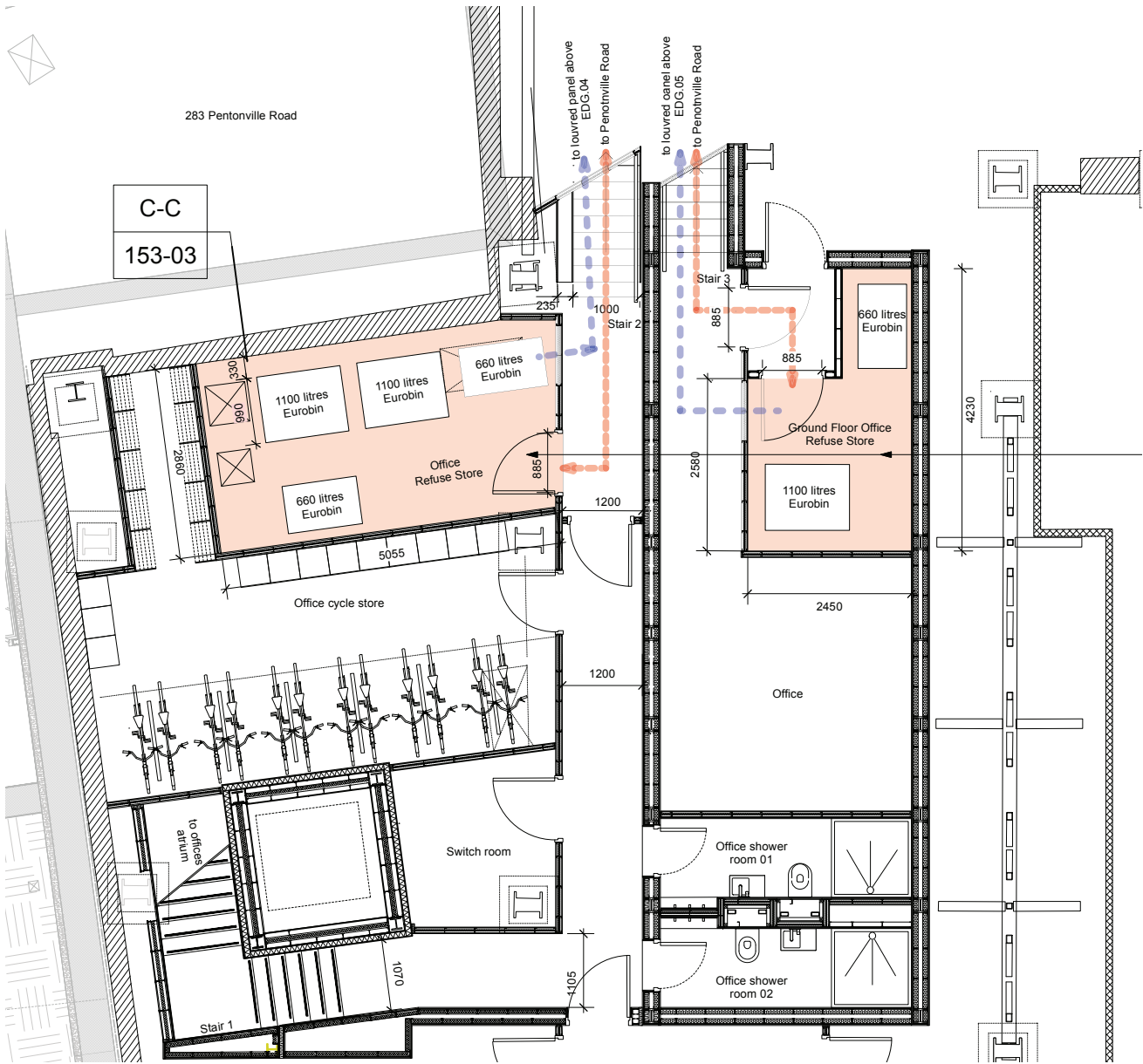
- Note: allow 150mm between the bins and around the bins (away from the walls).

KEY

- Bin store ventilation extract
- Exit route from bin store

NOTES:

Waste + recycling stored in bin bags in basement within bins.
Bin bags carried out on collection day and deposited on Pentonville road.



Refuse Storage Layout With
Office Use on Ground floor

File Note

Project	KX Bridge
Subject	Refuse & Recycling Storage
Date	
File ref	1209/7.1

- Reference made to Camden Waste Storage Requirements (downloaded from the website).

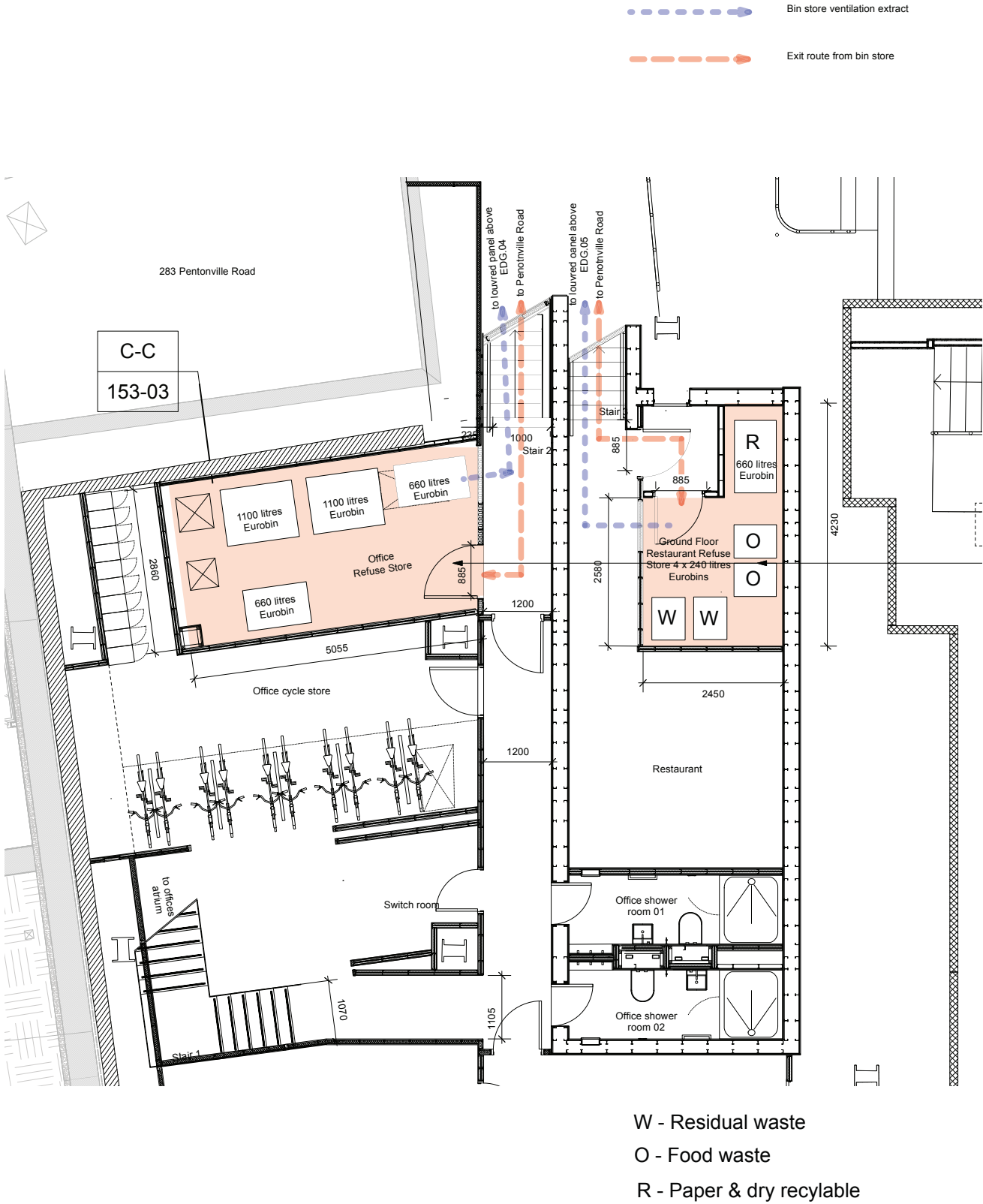
- Areas:

Ground floor	= 3,390 ft ² approx (A1/ A3 use)
First floor	= 4,425 ft ² approx (B1 use)
Second floor	= 4,425 ft ² approx (B1 use)

Total = 12,240ft² approx

General storage requirement - 1m³ (1000 litres) of storage for every 3000 to 5000ft² of floor area.

- 1st & 2nd fl Office use: 2 x 1100 litre Eurobins (1260mm wide x 990mm deep)
2 x 660 litre Eurobin (1260mm wide x 730mm deep) for recycling
- Ground floor Restaurant use: 2 x 240 litre Eurobins (580mm wide x 740mm deep) for residual waste
2 x 240 litre Eurobins for food waste
1 x 660 litre Eurobin for dry recyclable



Refuse Storage Layout With
Restaurant Use on Ground floor