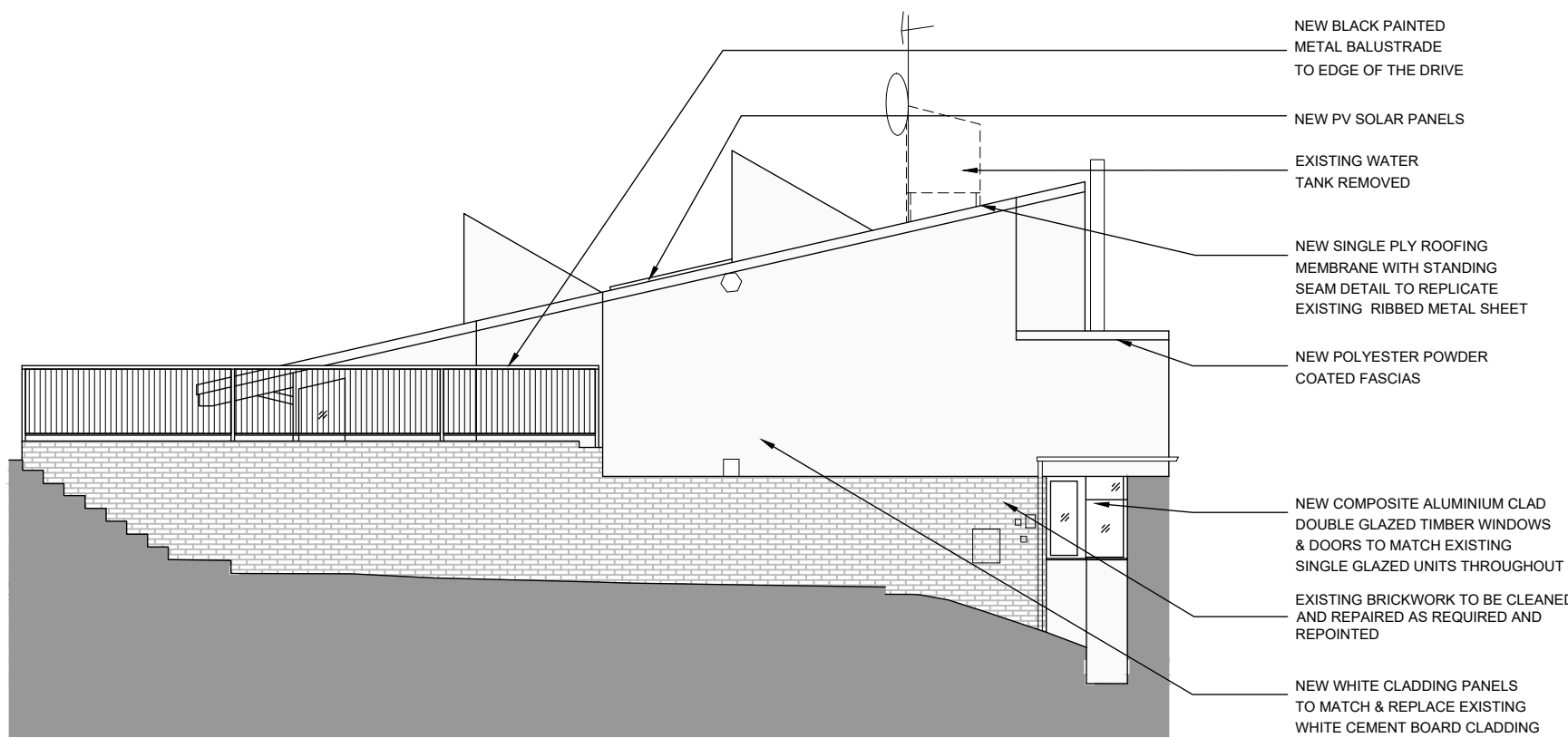
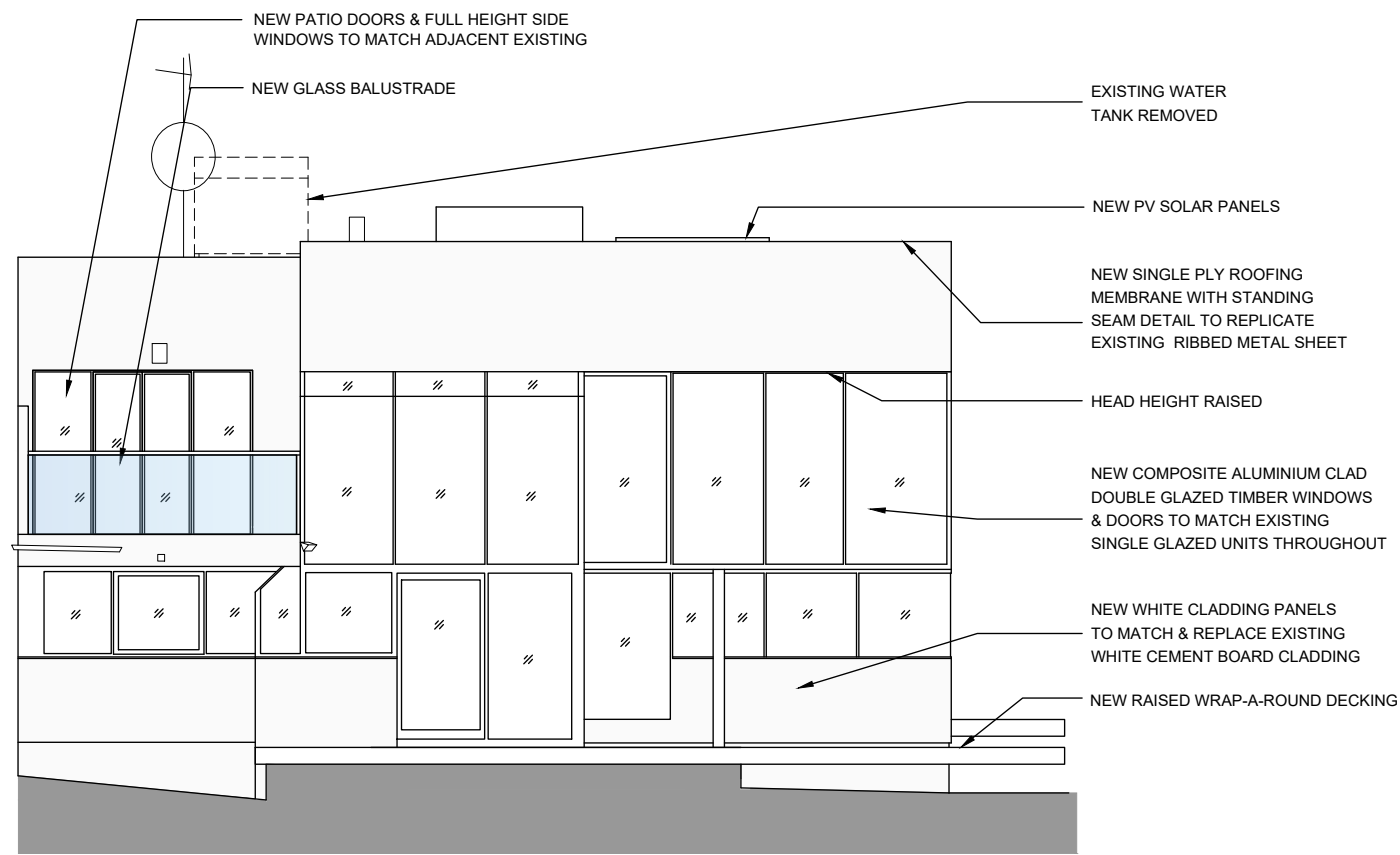


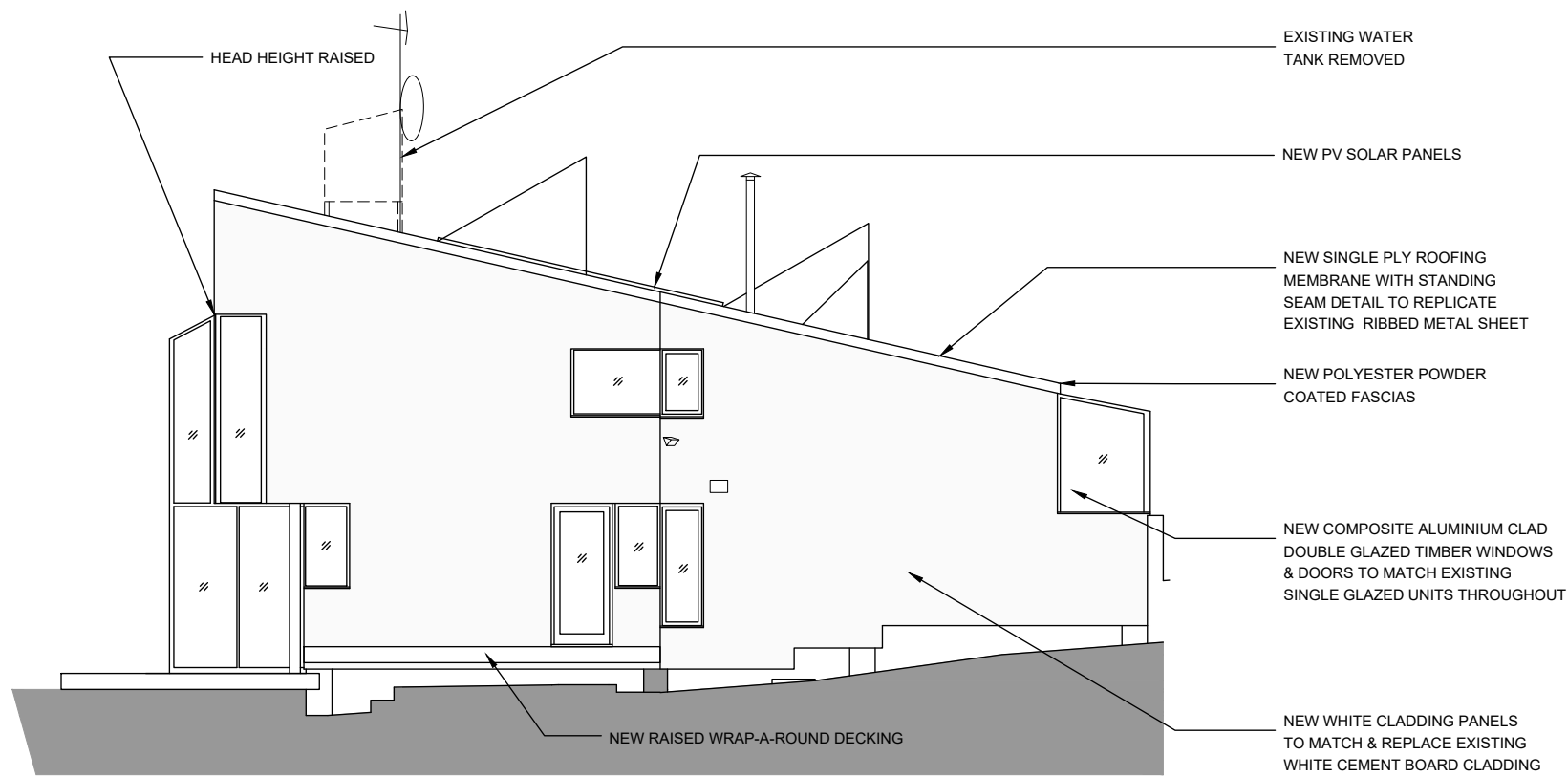
PROPOSED ELEVATION 1



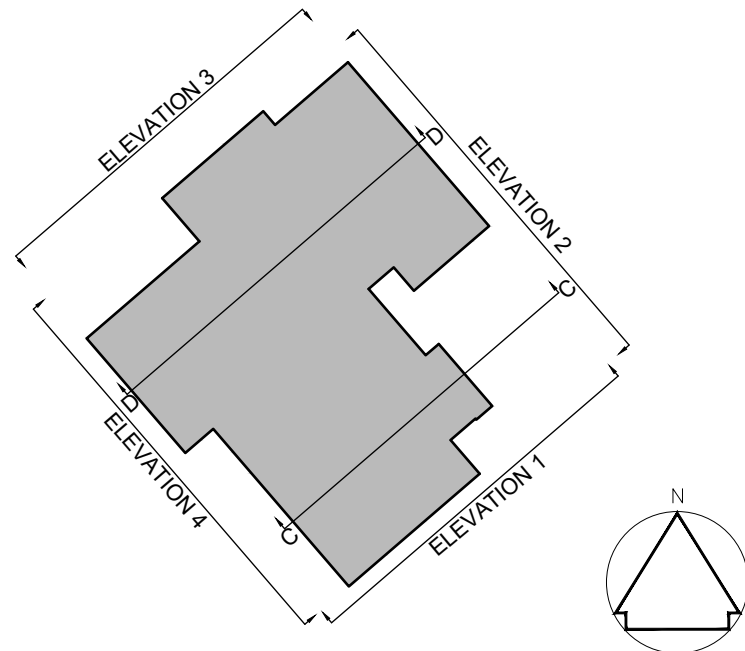
PROPOSED ELEVATION 2



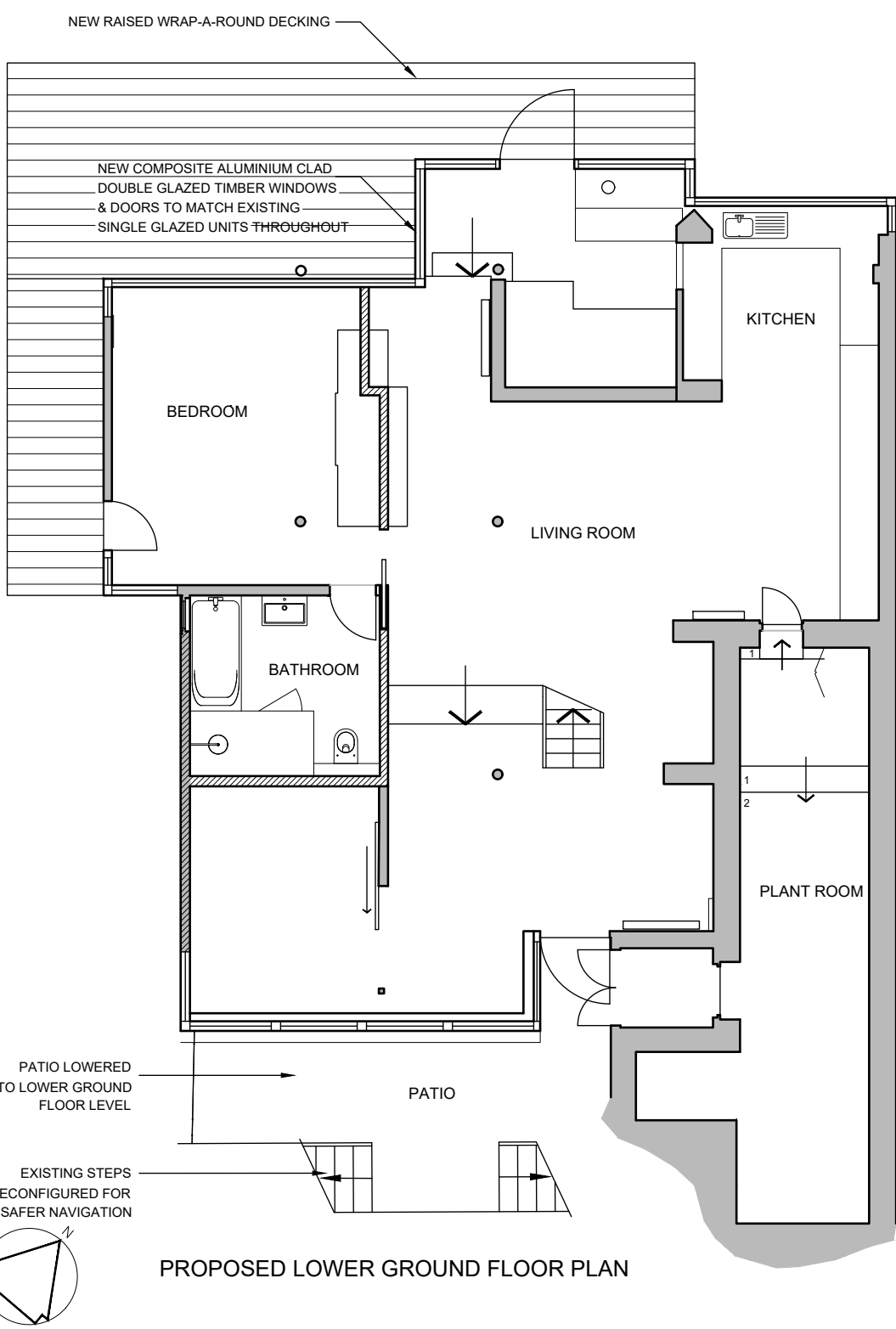
PROPOSED ELEVATION 3 - approach b



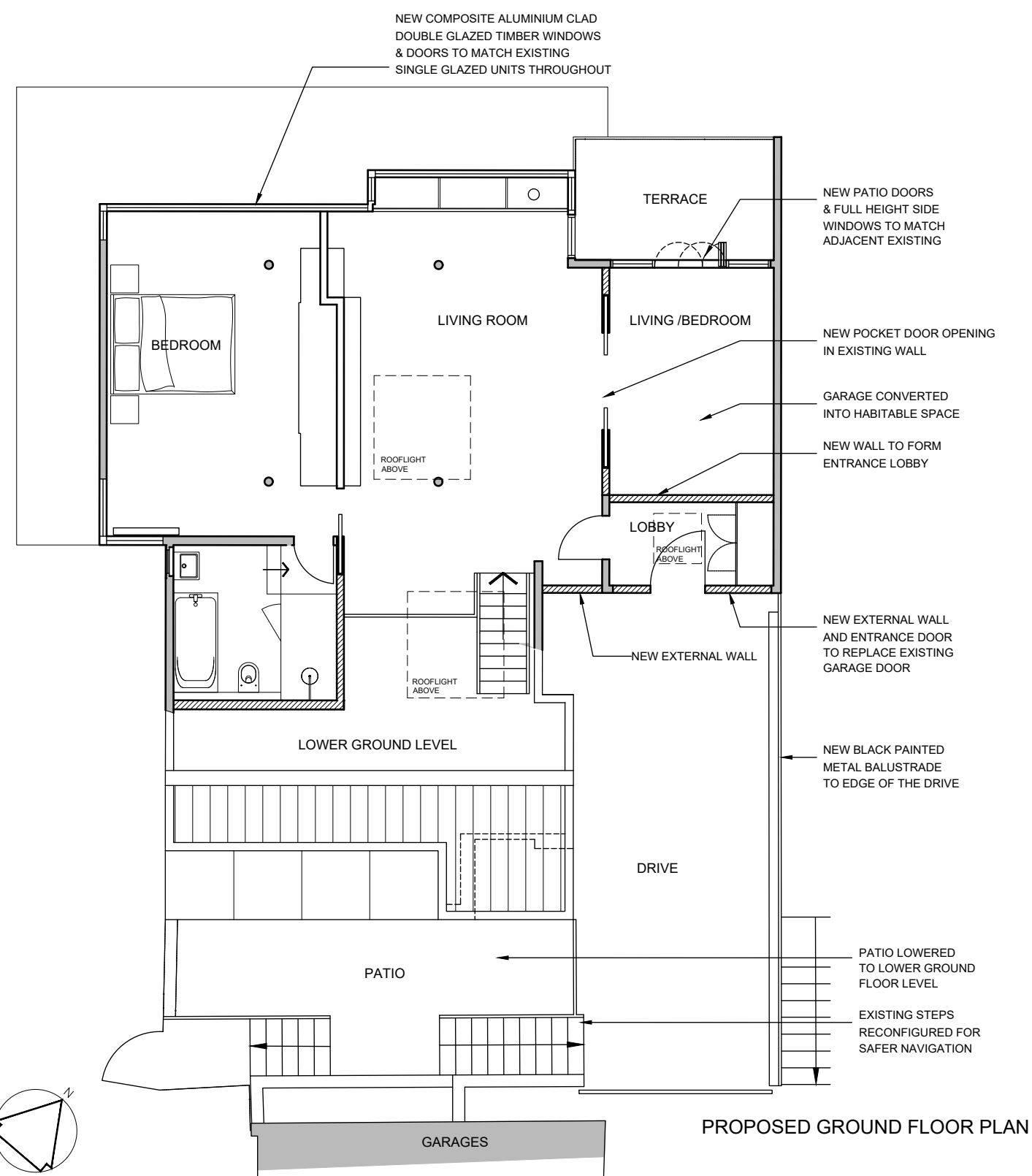
PROPOSED ELEVATION 4



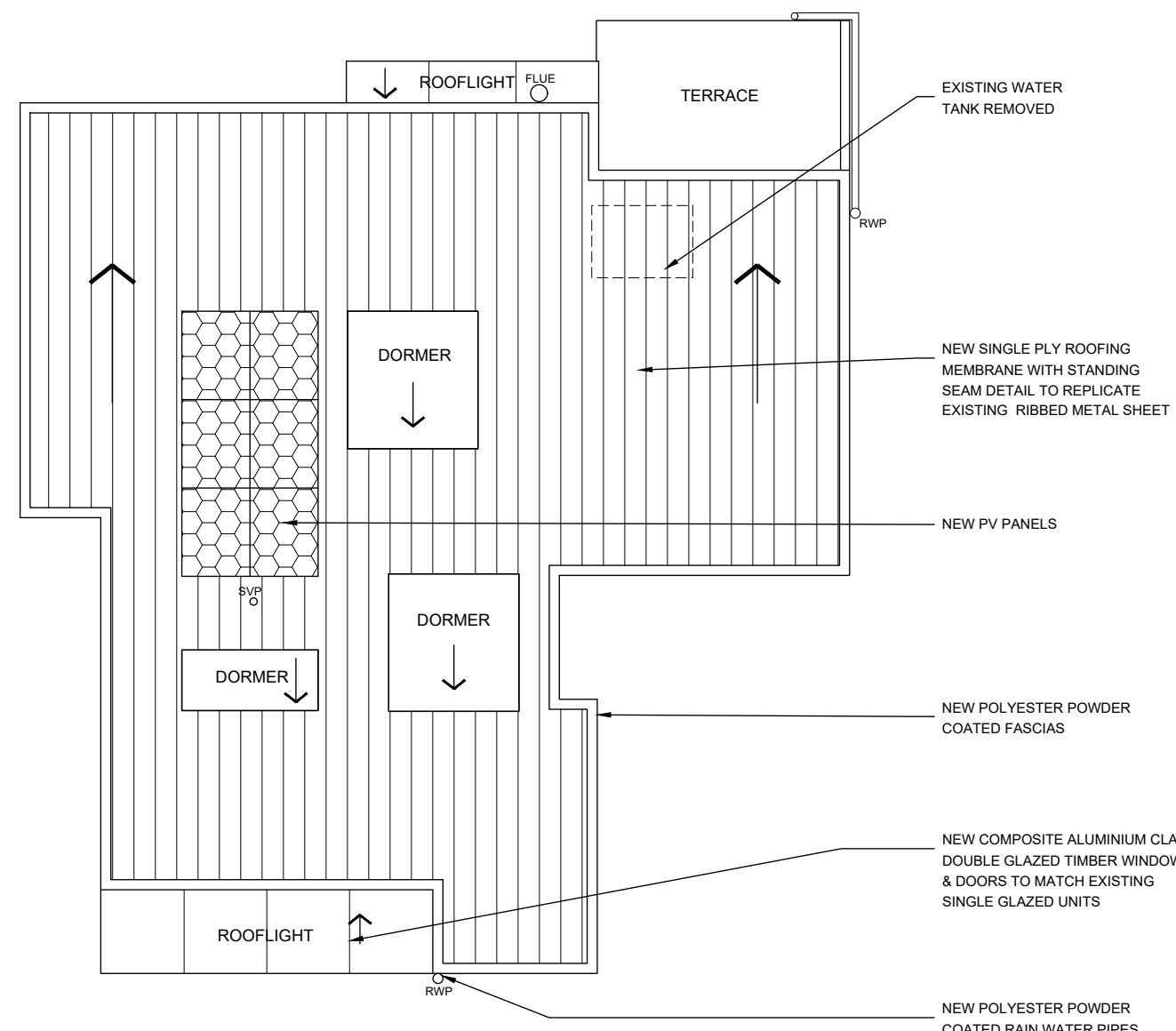
KEY PLAN



PROPOSED LOWER GROUND FLOOR PLAN



PROPOSED GROUND FLOOR PLAN



PROPOSED ROOF PLAN



Rev	Notes	Date	By
PLANNING			
			
BB PARTNERSHIP CHARTERED ARCHITECTS			
Studios 33-34, 10 Hornsey St, London. N7 8EL Tel 020 7336 8555 - e-mail - architect@bbpartnership.co.uk			
Client			
Project Weeping Ash, Oak Hill Park London NW3 7LP			
Drawing Proposed Plans & Elevations			
Date Oct 23	Scale 1:100@A1	Drawn by LA	
drg.no. GIC - 412		Revision	
© 2022 BB PARTNERSHIP LIMITED - ALL RIGHTS RESERVED			