

DO NOT SCALE

THE CONTRACTOR IS TO CHECK AND VERIFY ALL BUILDING AND SITE DIMENSIONS, LEVELS AND SEWER INVERT LEVELS AT CONNECTION POINTS BEFORE WORK STARTS.

THIS DRAWING IS TO BE READ AND CHECKED IN CONJUNCTION WITH ENGINEERS AND OTHER SPECIALIST DRAWINGS & SPECIFICATIONS.

THE DRAWING AND THE WORKS DEPICTED ARE THE COPYRIGHT OF PAWLK+WIEDMER LTD AND MAY NOT BE REPRODUCED EXCEPT BY WRITTEN PERMISSION.

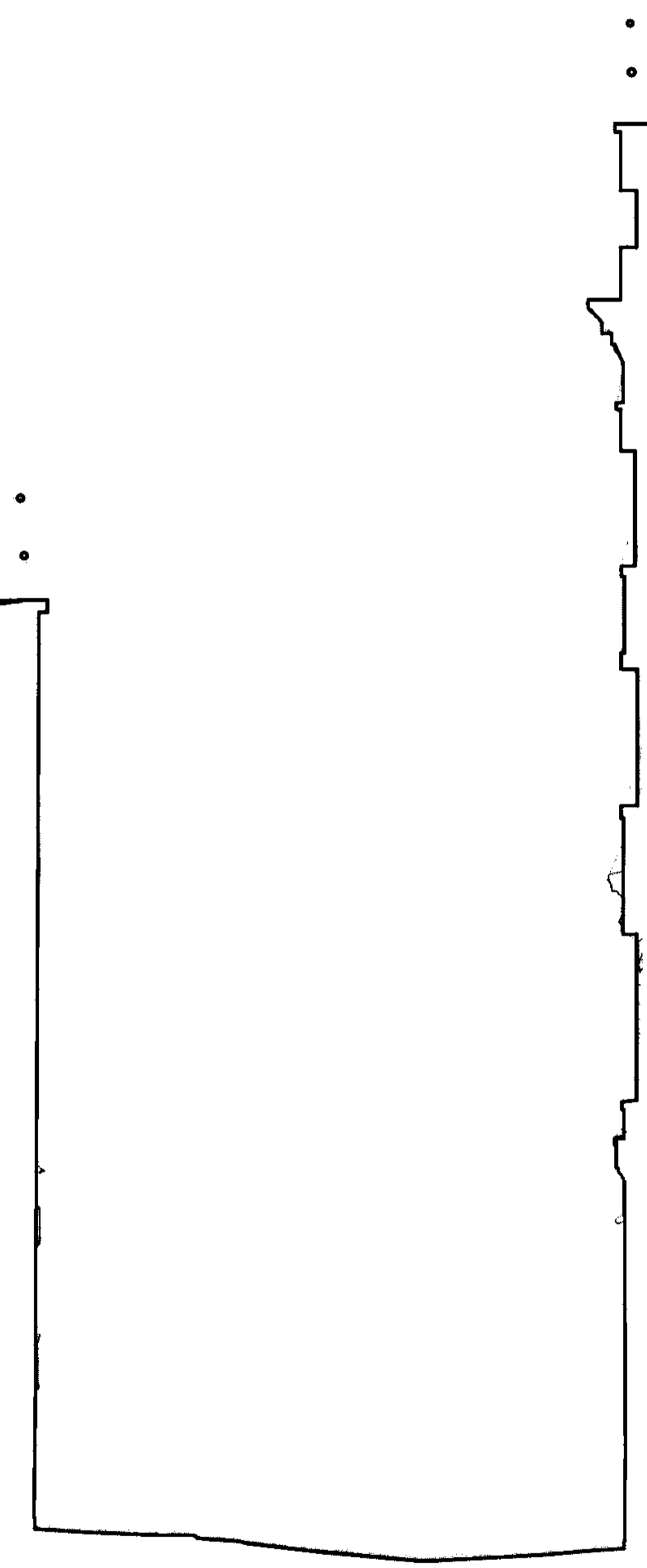
NOTES

TO BE READ IN CONJUNCTION WITH DEMOLITION GA PLANS, SECTIONS, ELEVATIONS, FINISHES PLANS AND HERITAGE STATEMENT. REFER ALSO TO MEP ENGINEERS' STRIP OUT AND BUILDERSWORK INFORMATION AND LIGHTING LAYOUTS.



Ambassadors Theatre

St Martins Theatre



##	dd/mm/yy	Issue Reason	??
Rev	Date	Reason For Issue	CHK

Key Plan

pawlik + wiedmer
 6-12 Creekside
 London
 SE8 3DX
 london@pawlikwiedmer.com
 Registered in England & Wales No: 3155454
 Registered Office: 27 Mariner Street, W1T 3BL, UK

Client
Ambassadors Theatre & St Martins Theatre
 West Street
 WC2H 9ND

Project
Tower Court
 Festoon Lighting

Title
Section AA
 Thru Tower Court
 Existing

Stage
PLANNING

Project Number 564	Date October 2023	Checked By AVF
Revision -	Scale @ ISO A1 1:50	Approved By NP

Drawing Number
564-PWL-ZZ-ZZ-DR-A-EX-0200

1 VIEW
 Tower Court View - Existing NTS

2 SECTION
 AA Through Tower Court - Existing 1:50

