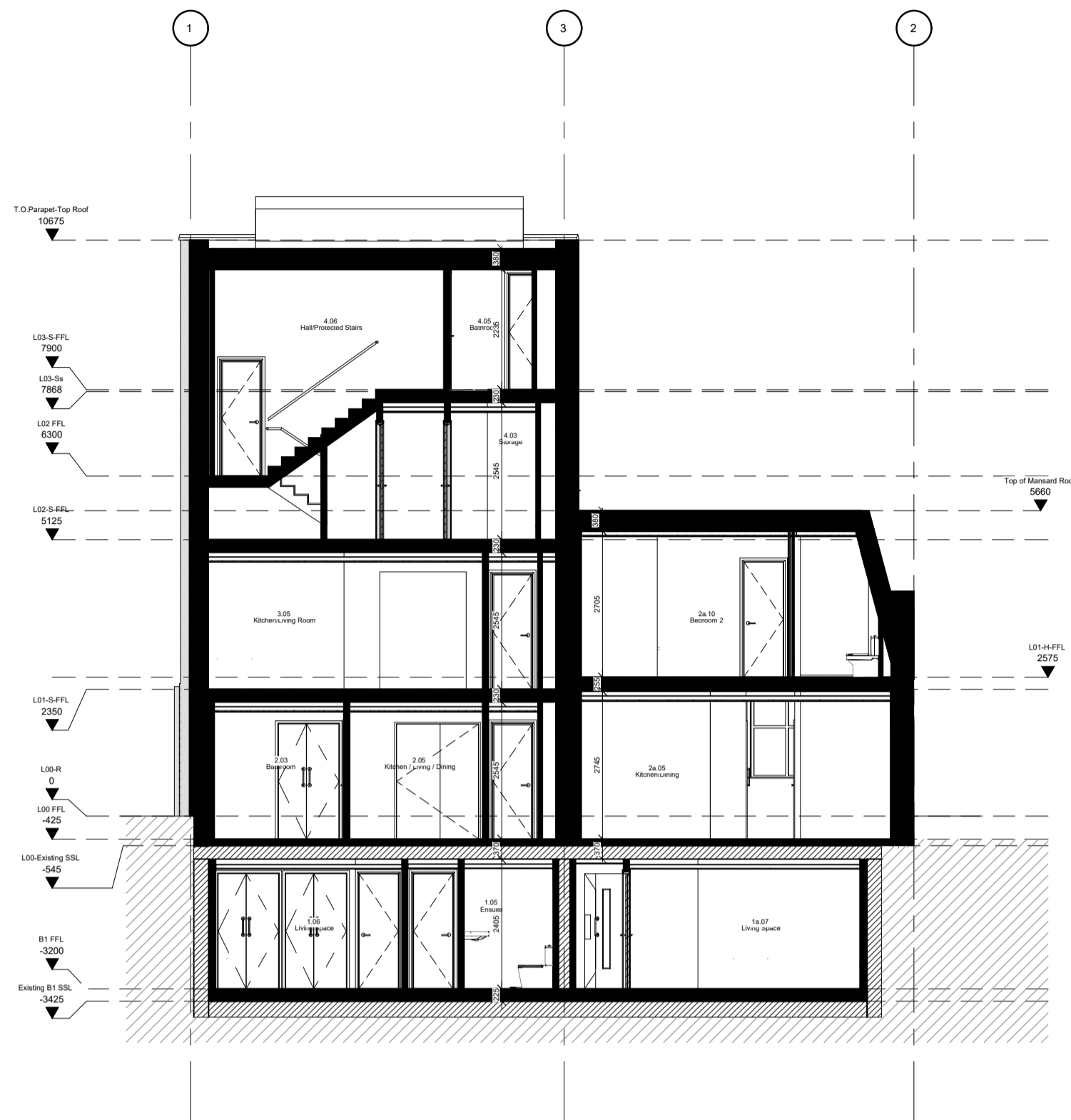
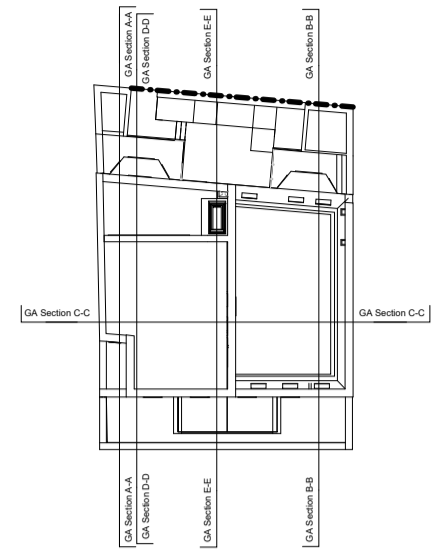
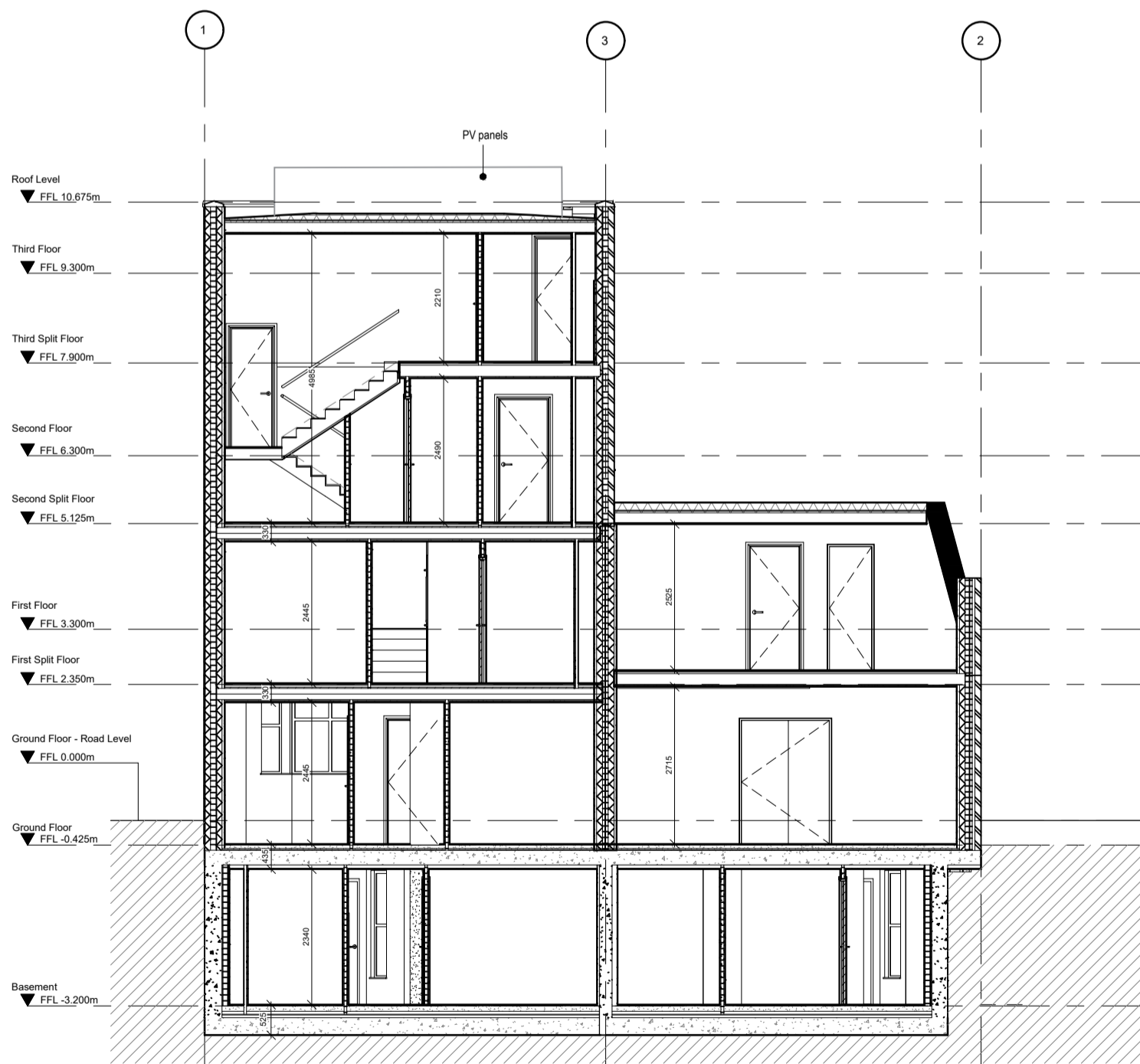


KEY PLAN



1 Section C-C
As Proposed



2 Section C-C
As Approved (2022/1406/P)

PO4	04.03.23	CD	Issued for Planning	AO
PO3	05.05.22	YW	Add Comments	AO
PO2	30.03.22	MP	Issued for Planning	GP
PO1	11.03.22	YW	First Issue	MP
rev	date	by	description	chkd

J:\9013 Falkland Road\0-00 BIM\0-03 AutoCAD\Sheets\A-P-Plans\A-G2-P-GAs\9013-NMA_ComparisonDrawings.dwg

drawing status
PLANNING SUBMISSION

Copyright of CPMG Architects Limited 2023. All rights reserved. No part of this publication may be reproduced, stored in any retrieval system or transmitted in any form or by any means without prior permission of CPMG Architects Limited. Do not scale from drawing, use figured dimensions only. All dimensions to be checked on site.
ISO 9001: 2015 Quality Management
BS EN 18002:2018 Information Management

job title
FALKLAND ROAD

drawing title
SECTION 73 DRAWINGS
SECTION C-C

		CPMG Architects Ltd People Purpose Place	
Nottingham 13 St. Peter's Gate, Nottingham, NG1 3PF London 31/35 Killy Street, London, EC2N 8TE Birmingham Spence, The Malbox, Level 1, 3 Whitehall St, B1 1HD enquiries@cpmg-architects.com www.cpmg-architects.com		0115 958 9600 0207 492 1800 0121 267 4188	
drawn by	date	checked by	scale
MP	28.02.22	GP	1:100
job no.	drawing no.	revision	media
9013	CPM-01-ZZ-DR-A-7012	P04	A2

DWG To PD