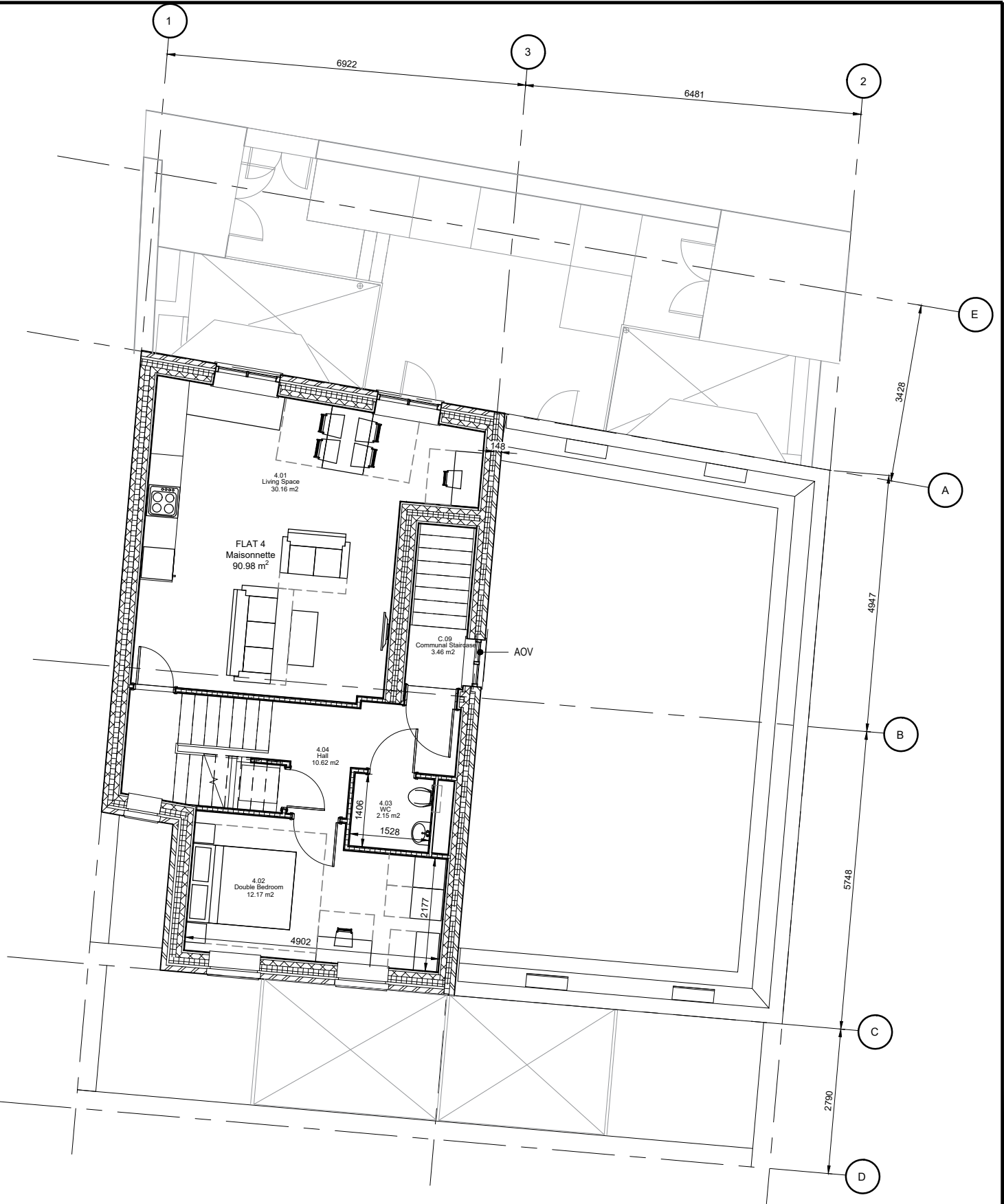


**1 Second Floor Plan**  
As Proposed



**2 Second Floor Plan**  
As Approved (2022/1406/P)

**Comments:**  
 1. Door position changed  
 2. Stair width narrowed due to construction constraints

rev	date	by	description	chkd
P05	24.03.23	CD	Dormer windows position amended	AO
P04	06.03.23	CD	Issued for Planning	AO
P03	05.05.22	YW	Add Comments	AO
P02	30.03.22	MP	Issued for Planning	GP
P01	11.03.22	YW	First Issue	MP

drawing status	PLANNING SUBMISSION
Copyright of CPMG Architects Limited 2023. All rights reserved. No part of this publication may be reproduced, stored in any retrieval system or transmitted in any form or by any means without prior Permission of CPMG Architects Limited. Do not scale from drawing, use figured dimensions only. All dimensions to be checked on site.	
ISO 9001: 2015 Quality Management BS EN 19650:2018 Information Management	ISO 14001: 2015 Environmental Management

job title	FALKLAND ROAD
drawing title	SECTION 73 DRAWINGS SECOND FLOOR PLAN

<b>CPMG Architects Ltd</b> People.Purpose.Place Nottingham 13 St. Peter's Gate, Nottingham, NG1 2JF 0115 958 9500 London 31 / 35 Kirby Street, London, EC1N 8TE 0207 492 1805 Birmingham Spaces, The Mailbox, Level 1, 3 Wharfedale St. B1 1RD 0121 387 4188 enquiries@cpmg-architects.com www.cpmg-architects.com			
drawn by	date	checked by	scale
MP	28.02.22	GP	1:100
job no.	drawing no.	revision	media
9013	CPM-01-02-DR-A-7004	P04	A3