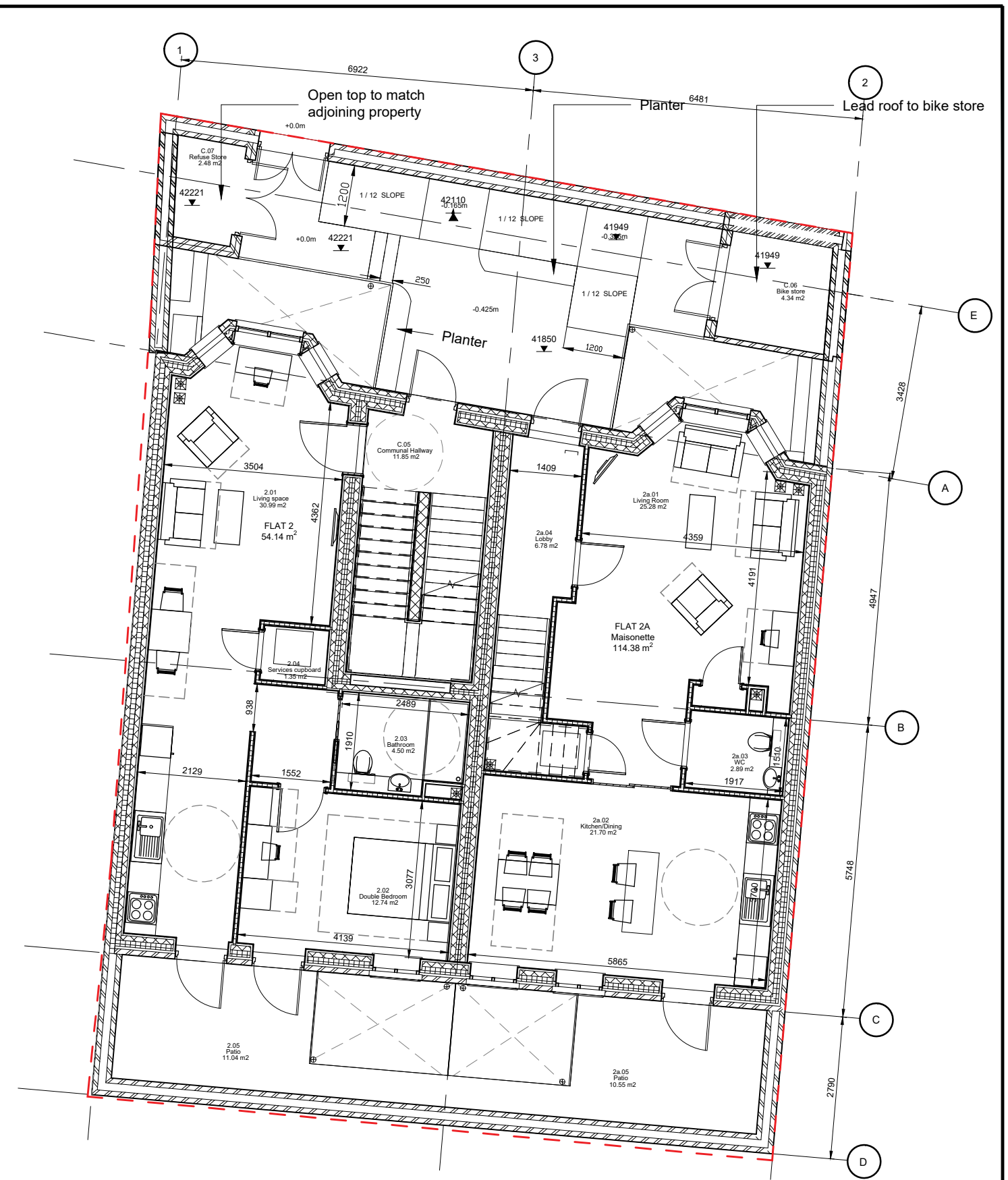




1 Ground Floor Plan  
As Proposed



2 Ground Floor Plan  
As Approved (2022/1406/P)

rev	date	by	description	chkd
P05	06.03.23	CD	Issued for Planning	AO
P04	04.08.22	YW	Minor changes to LPA comments	GP
P03	05.05.22	YW	Add Comments	AO
P02	30.03.22	MP	Issued for Planning	GP
P01	11.03.22	YW	First Issue	MP

**Comments:**

- FLAT 2a staircase moved to allow communal hallway.
- Entrance to FLAT 2 changed.
- FLAT 2 new arrangement.

drawing status	PLANNING SUBMISSION
job title	FALKLAND ROAD
drawing title	SECTION 73 DRAWINGS GROUND FLOOR PLAN
Copyright of CPMG Architects Limited 2023. All rights reserved. No part of this publication may be reproduced, stored in any retrieval system or transmitted in any form or by any means without prior Permission of CPMG Architects Limited. Do not scale from drawing, use figured dimensions only. All dimensions to be checked on site.	
ISO 9001: 2015 Quality Management BS EN 19650:2018 Information Management	ISO 14001: 2015 Environmental Management

drawn by	date	checked by	scale
MP	28.02.22	GP	1:100
job no.	drawing no.	revision	media
9013	CPM-01-00-DR-A-7002	P05	A3

**CPMG Architects Ltd**  
People.Purpose.Place

Nottingham 13 St. Peter's Gate, Nottingham, NG1 2JF  
London 31 / 35 Kirby Street, London, EC1N 8TE  
Birmingham Spaces, The Mailbox, Level 1, 3 Wharfedale St. B1 1RD

0115 958 9500  
0207 492 1805  
0121 387 4188

enquiries@cpmg-architects.com www.cpmg-architects.com