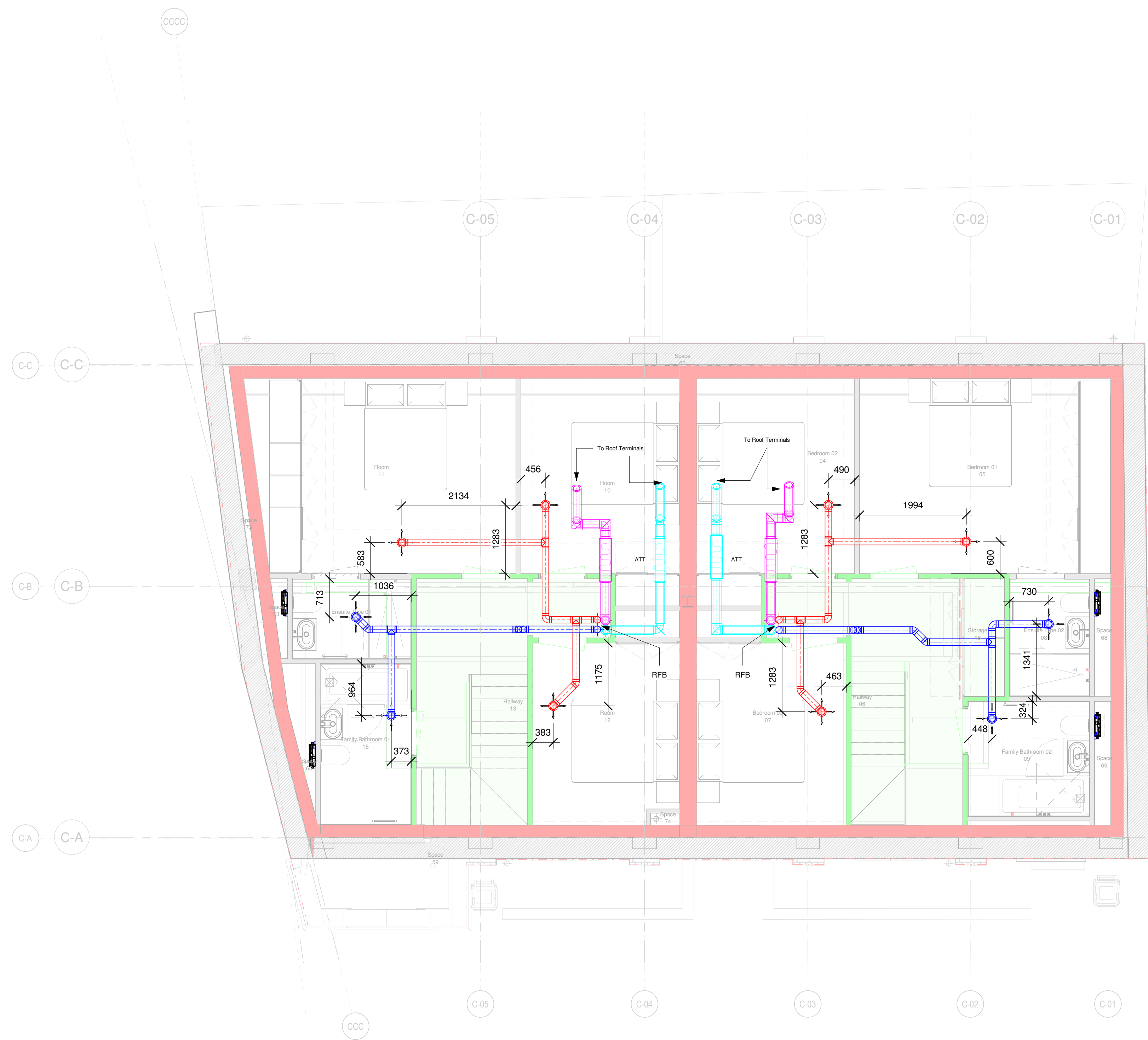


54-Ventilation Ground Floor  
1 : 50



54-Ventilation First Floor  
1 : 50

## UB41 Hooded Tile Terminal Universal



- Product features and benefits**
- 20,000mm<sup>2</sup> large free vent area
  - Large diameter spigot c/w Adapter to accept ducting of 100/110/125/150/160mm

- Application**
- Mechanical extraction
  - Minimum pitch of 22.5°

- Material**
- PVC-U and Uniflex

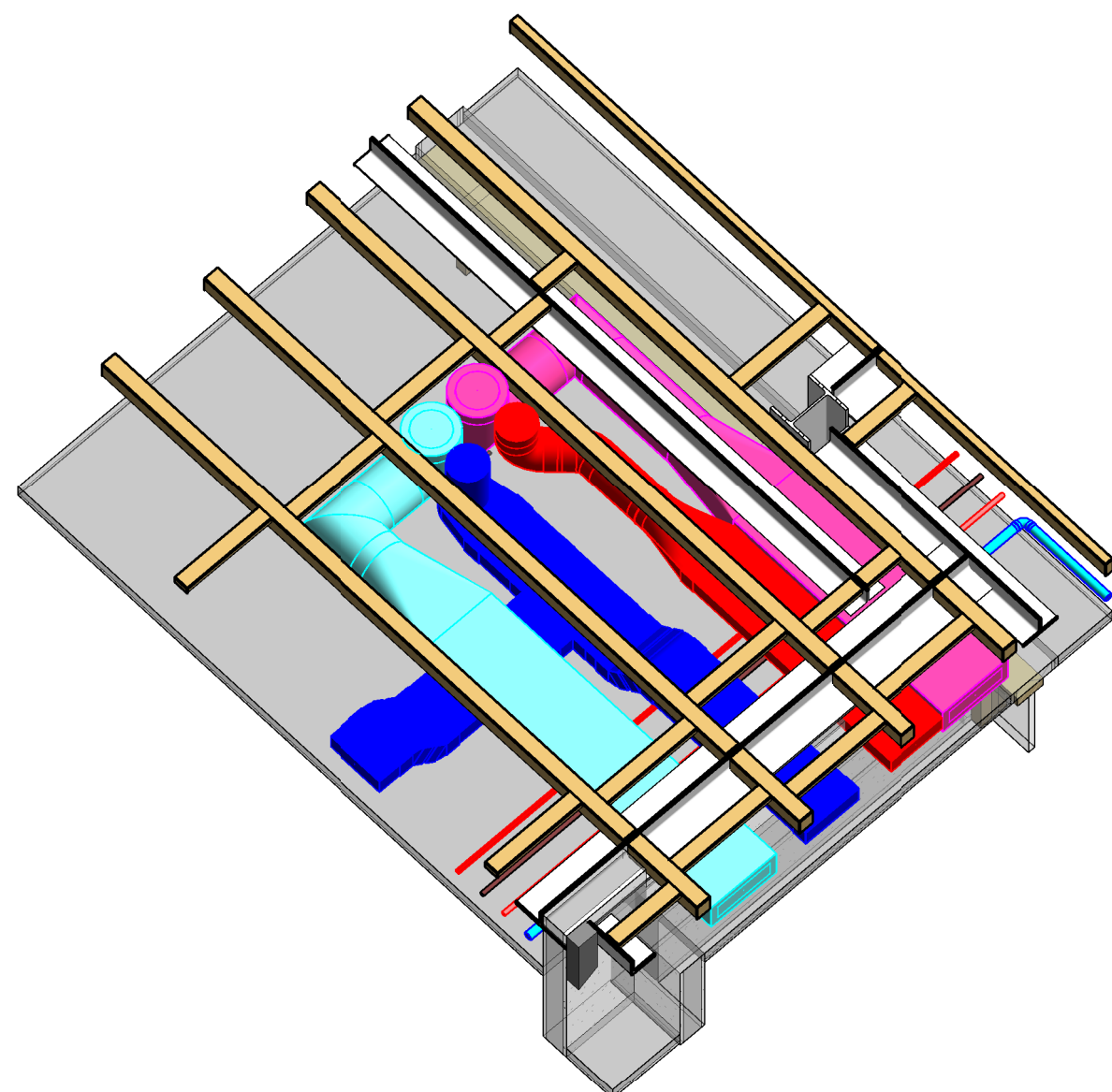
- Dimensions**
- 500mm x 500mm skirt
  - Stepped Adaptor - H: 215mm

- Weight**
- 1.53kg per unit

- Packaging**
- 1 per box

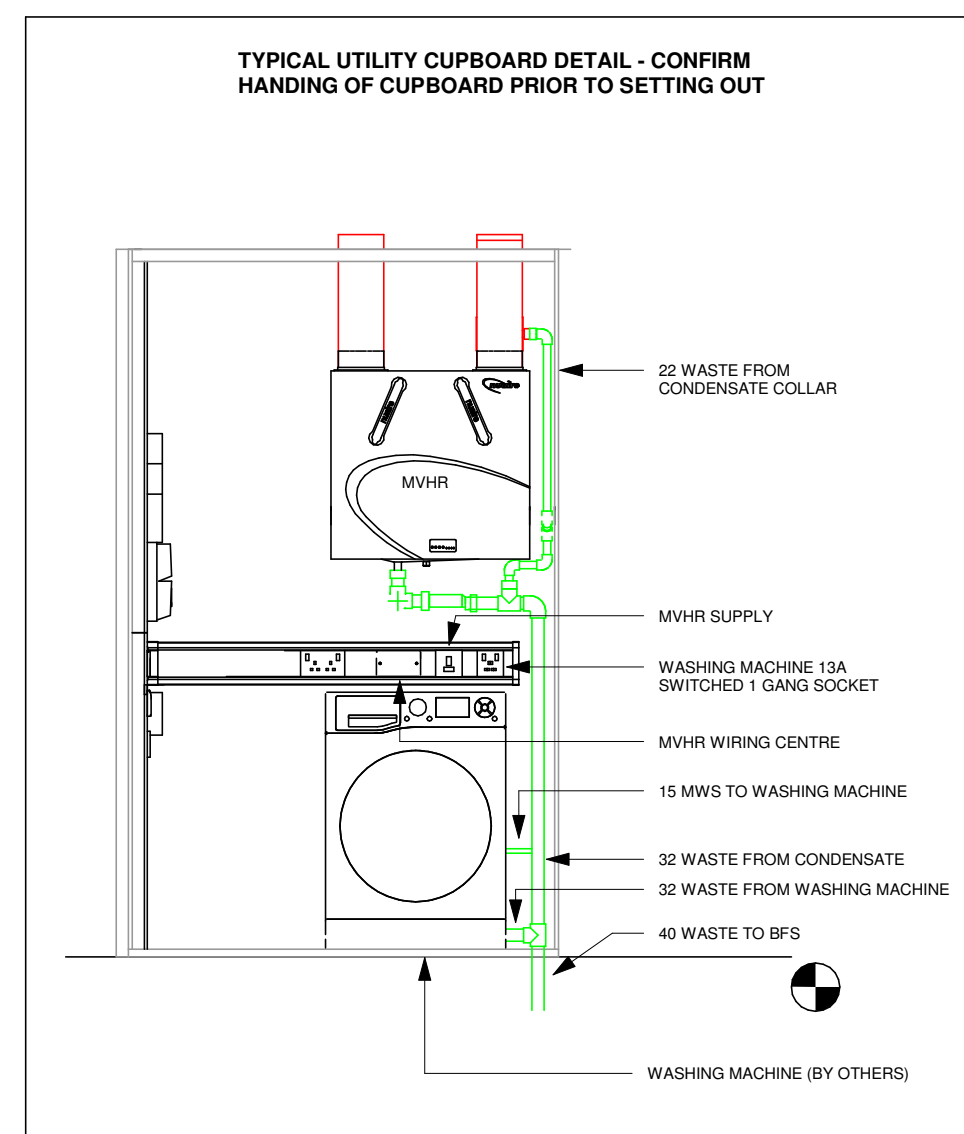
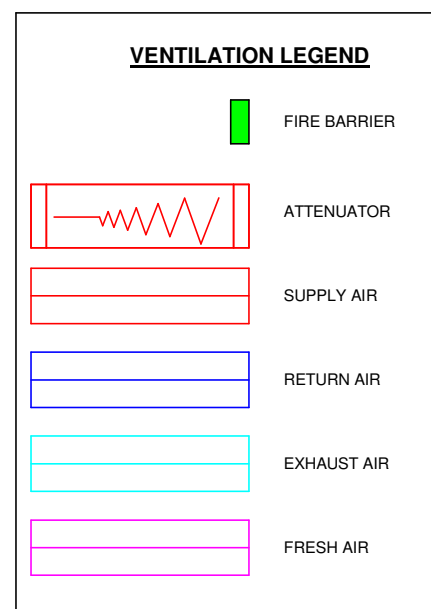
- Colours**
- Red/terracotta skirt
  - Terracotta/terracotta skirt
  - Anthracite black skirt
  - Sepia/black skirt

- Product Code**
- Red 100130172069
  - Terracotta 100130172067
  - Anthracite 100130172063
  - Sepia 100130172066



3D View - Vent Riser

Free Vent Data		Pressure (Airflow Resistance) (Pa/m²)	
Ømm	Area	1000Pa	225Pa
100	7,850	3.0	7.3
125	12,266	4.3	10.6
150	17,671	6.3	15.8
160	18,779	6.5	16.0



**PLUMBERS ATTENDANCE:**  
A condensate is to be run from the HRV unit to a waste pipe with a 1° degree drop. The condensate should be large enough to accommodate a 32mm diameter tube. The condensate drain should be insulated where it runs in cold areas of the property.

**BUILDERS ATTENDANCE:**  
All holes in masonry, steel, studwork & floors must be cut prior to first fix date. If roof vents are to be used for the inlet & exhaust ducts these must be correctly sized & fitted prior to first fix installation. Ensure there is a clear pathway for the duct runs as per the drawing.

Exterior terminals should be at the equivalent of at least 90% of the free area of the duct to atmosphere.

Any walk way in loft spaces must be raised 150mm to allow for ducting to cross under it.

To ensure good transfer of air throughout the dwelling, there should be an undercut of minimum area 760mm<sup>2</sup> in all internal doors above the floor finish. This is equivalent to an undercut of 10mm for a standard 760mm width door or 9mm for a standard 635mm door. Ensure the air transfer provision is unrestricted after floor finishes have been laid.

There must be a MINIMUM distance of 600mm from Air valves & cookers' hobs.

There must be a MINIMUM of 1000mm distance from Air valves to smoke/hear/ carbon monoxide detectors.

All duct work running in a cold attic must be insulated. Exhaust & inlet duct must ALWAYS be insulated.

Open fired combustion appliances are not recommended in dwellings fitted with Mechanical Ventilation with Heat Recovery where the system might interfere with the operation of the appliance and combustion. Where open fires or other combustion appliances are installed, the client must comply with the regulations outlined in Technical Booklet L/ Approved Document J. This includes but is not limited to, the provision of an independent air supply for combustion appliances, a flame spillage test for any sealed fuel burning stoves (due to risk of CO spillage) and the confirmation that the fire/appliances can operate safely irrespective of whether the ventilation system is working correctly or not. The MVHR system must not be relied upon as make up air for open fires or other combustion appliances.

**ELECTRICIANS ATTENDANCES:**  
Please refer to the Manufacturer's O&M manual for the correct wiring of the MVHR and any associated components.

MVHR is mechanical plant and as such it is the builders responsibility to ensure sufficient measures are taken in regard to soundproofing to mitigate breakout noise from the unit.

C01 CONSTRUCTION ISSUE		CH	JT	28.03.2023
REV	DESCRIPTION	DRN	CHKD	DATE
FOR CONSTRUCTION		STATUS		A4

# Harvey

**FIRST CLASS SERVICES**

**semple mckillop**

NATURALLY INNOVATIVE CONSULTING ENGINEERS

ISO 9001  
ISO 14001  
OHSAS 18001  
Registered

Belfast  
Castlediyney  
+44 (0)28 90331700  
+353 (0)42 9748570  
www.semplemckillop.com  
admin@semplemckillop.com

**PROJECT TITLE**  
HIGHGATE NEWTOWN COMMUNITY CENTRE - BLOCK C

**DRAWING TITLE**  
Block C Ventilation

<b>DRAWING REFERENCE</b> HNC-HAR-C-ZZ-DR-M-5401	<b>DRN</b> CH	<b>SCALE</b> A0 As indicated
--	------------------	---------------------------------