

Glazing to Bedroom

Double glazed, polyester powder coated. Slimline profile with thermal breaks. Glazing sections as shown on elevations.
Colour: RAL7048 Pearl Mouse Grey
Manufacturer: Crittall / Salisbury Glass / ALUK / or similar.



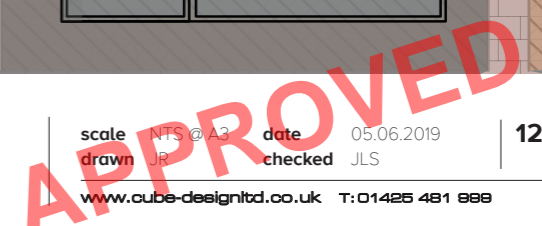
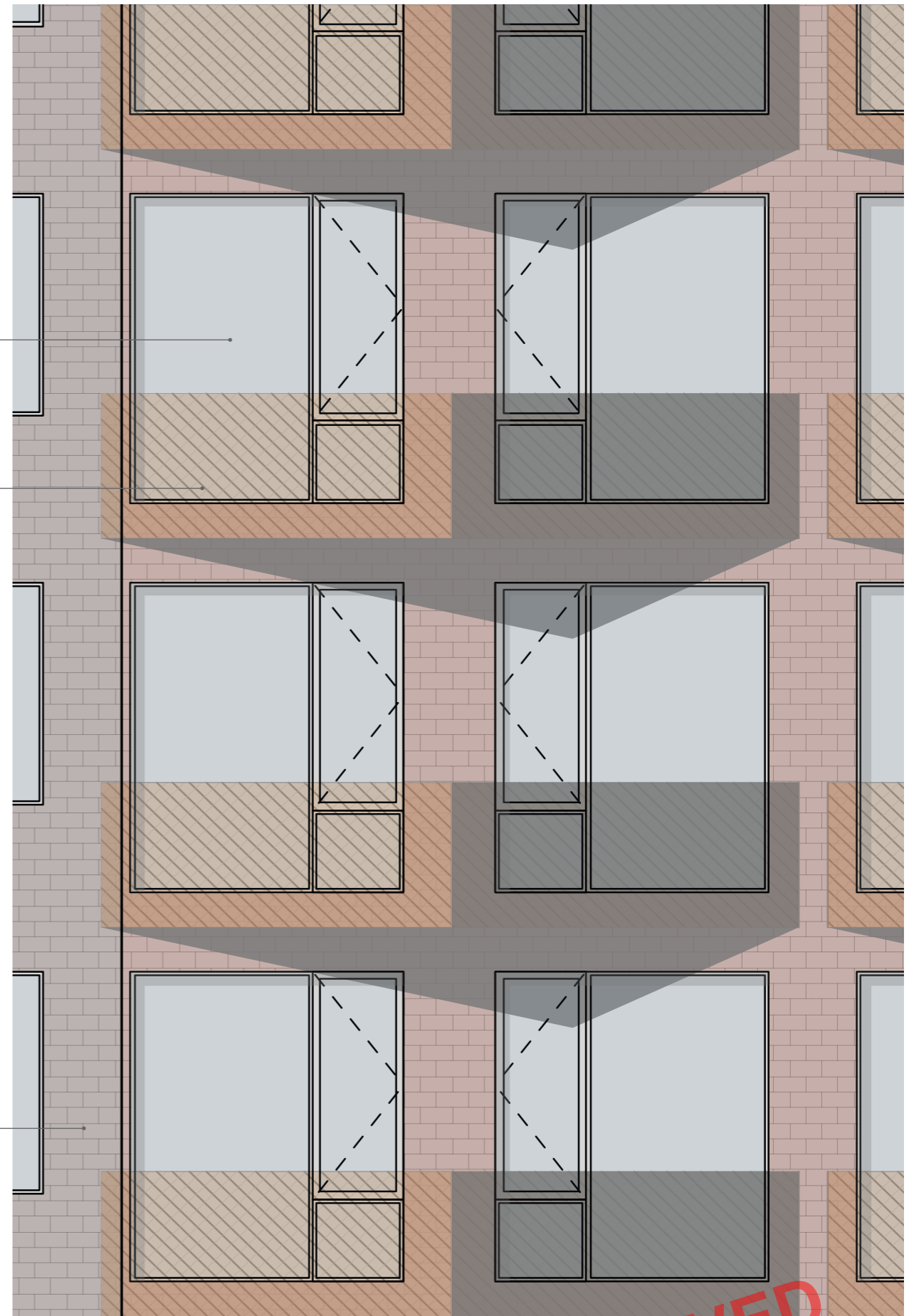
Feature Screen

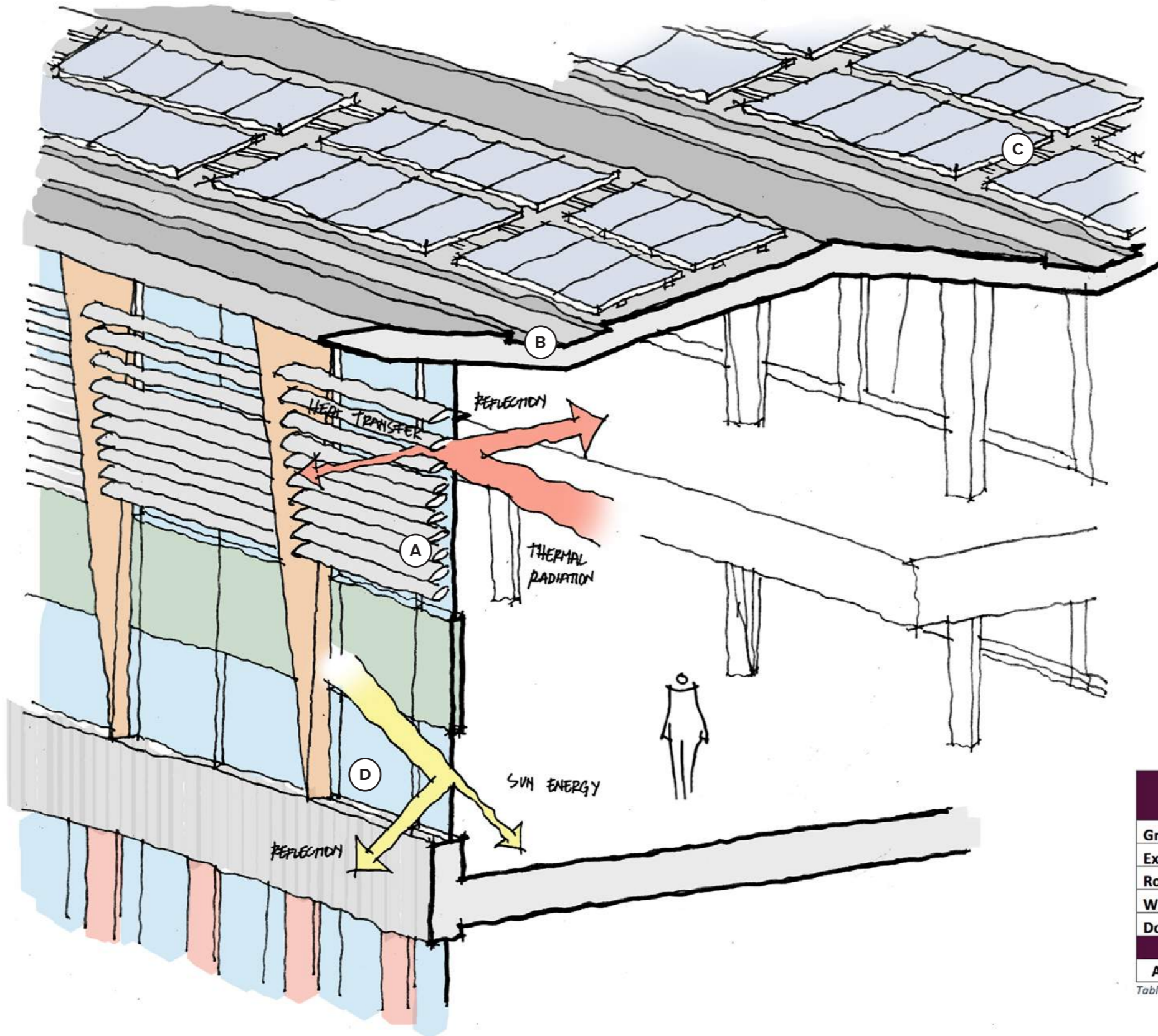
Copper coloured perforated sheet to provide facade detail. Shape to reflect existing facade detailing.



Existing Brickwork

Brick as existing.





KEY	
(A)	BRISE SOLEIL PROVIDES SUN SHADING TO SOUTH-FACING DINING AREA
(B)	WATER DRAINAGE SYSTEM AS PART OF COMPREHENSIVE RAINWATER MANAGEMENT SYSTEM TO CONTROL SURFACE WATER FLOW.
(C)	PHOTOVOLTAIC PANELS RENEWABLE ENERGY SOURCE FOR HOTEL (TOTAL SURFACE 150 SQM).
(D)	DOUBLE GLAZED TO CONTROL RADIANT HEAT TRANSFER INTO GLAZED AREAS; INCREASED THERMAL PERFORMANCE
U VALUE = 1.2 W/M ² K (TOTAL UNIT) G VALUE = 0.3	

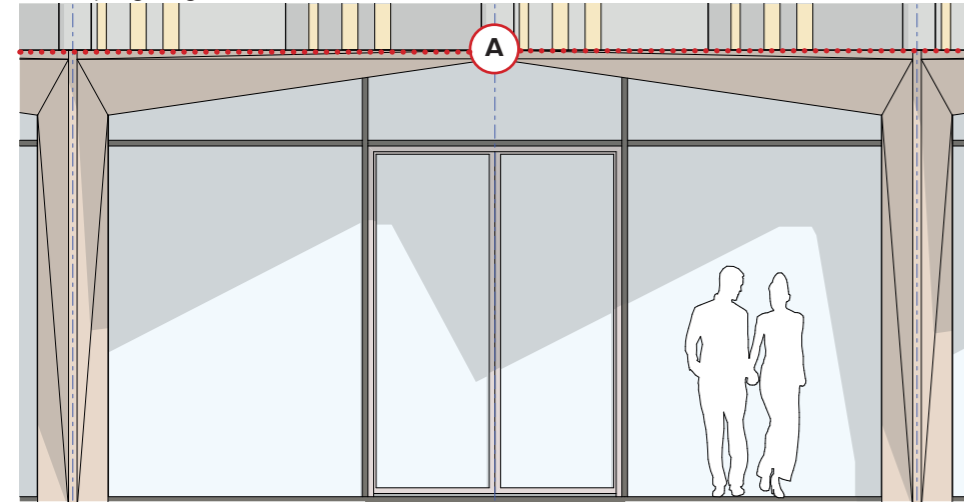
Element	Limiting 2013 U-value (W/m ² /K)	Notional 2013 U-value (W/m ² /K)	Targeted U-value (W/m ² /K)
Ground Floor	0.25	0.22	0.22
External Walls	0.35	0.26	0.18
Roof	0.25	0.18	0.15
Windows	2.2	1.6	1.2
Doors	2.2	2.18	-
	Limiting m ³ /h/m ²	Notional m ³ /h/m ²	Target m ³ /h/m ²
Air Permeability	10	3/5	5

Table 1: Proposed U-values and Air Permeability Targets

Dining Space Section

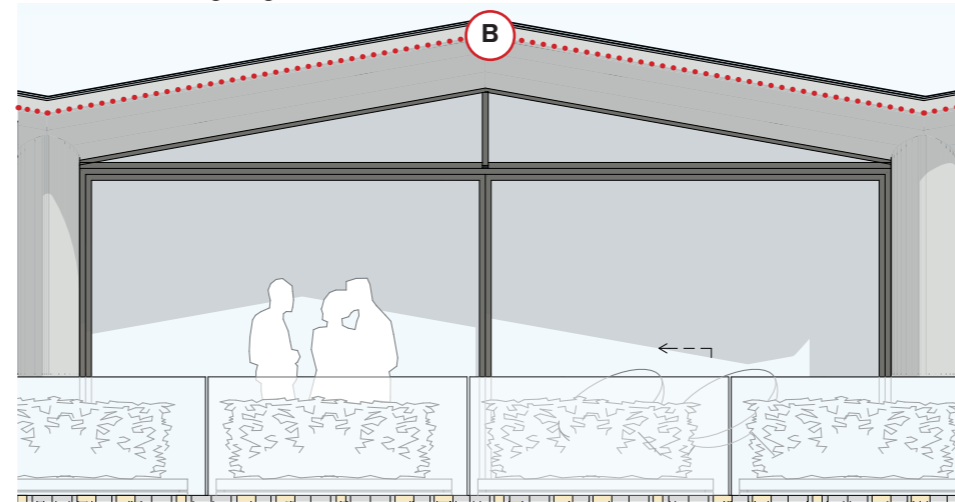
External Lighting to the Facade

- LED Strip Lighting in Soffits
- Soft-up Lighting



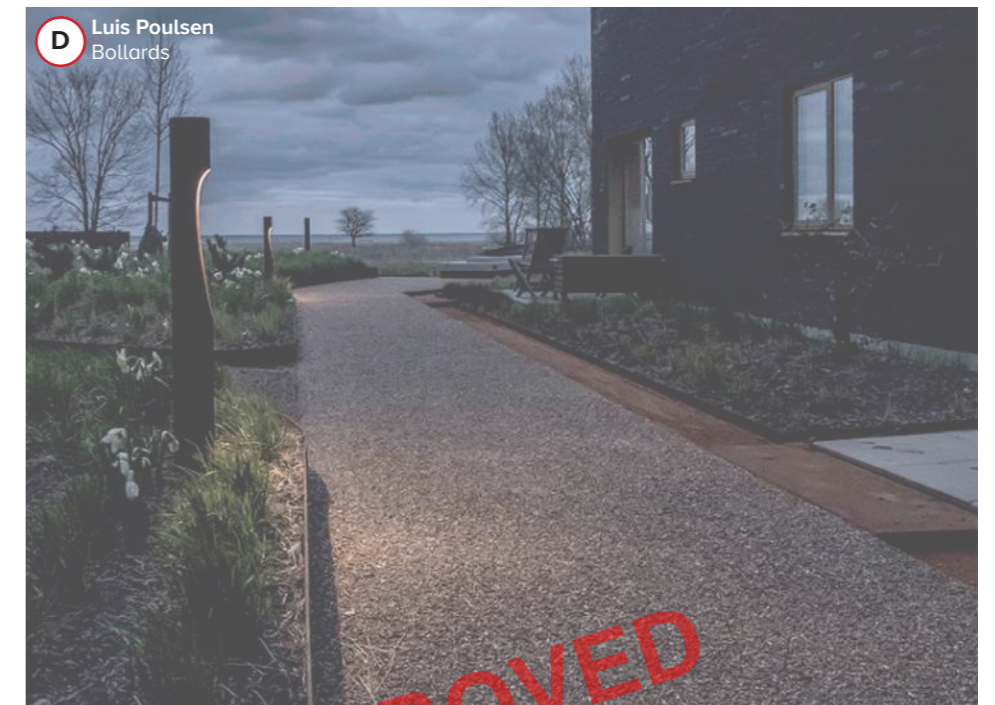
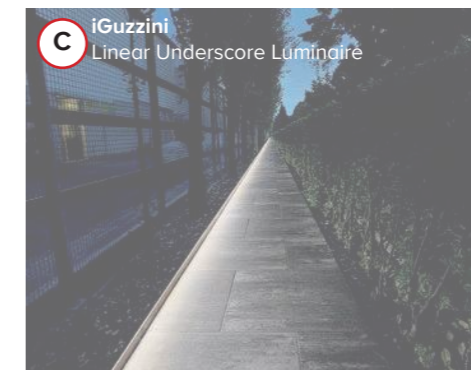
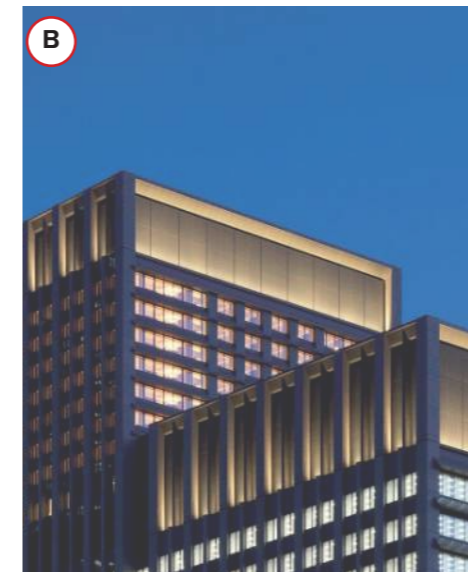
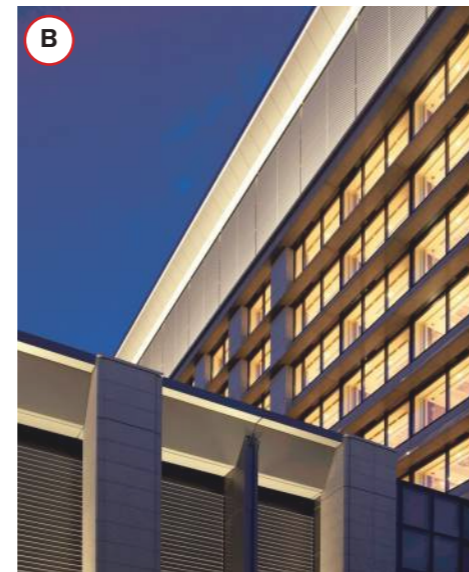
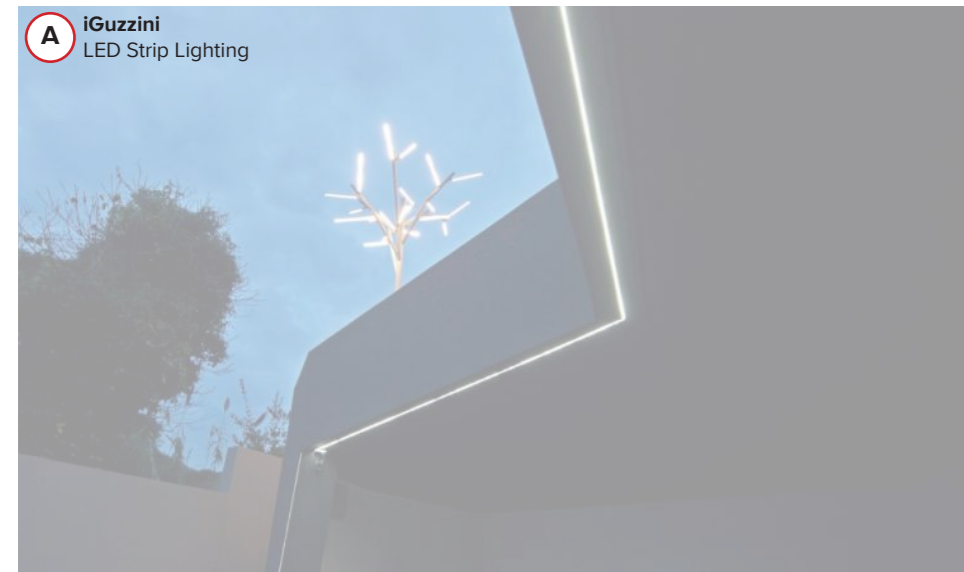
External Lighting to the Roof Facade & Terrace

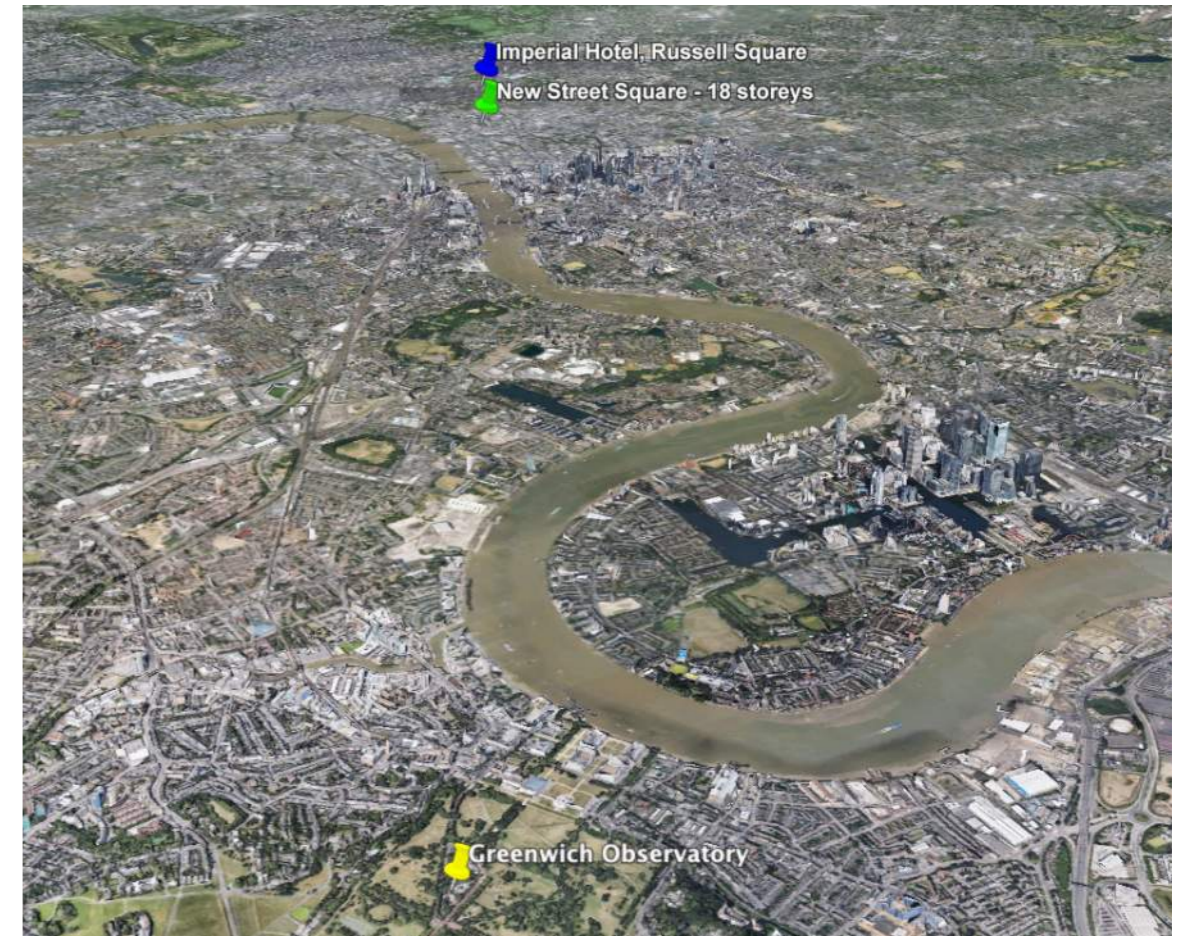
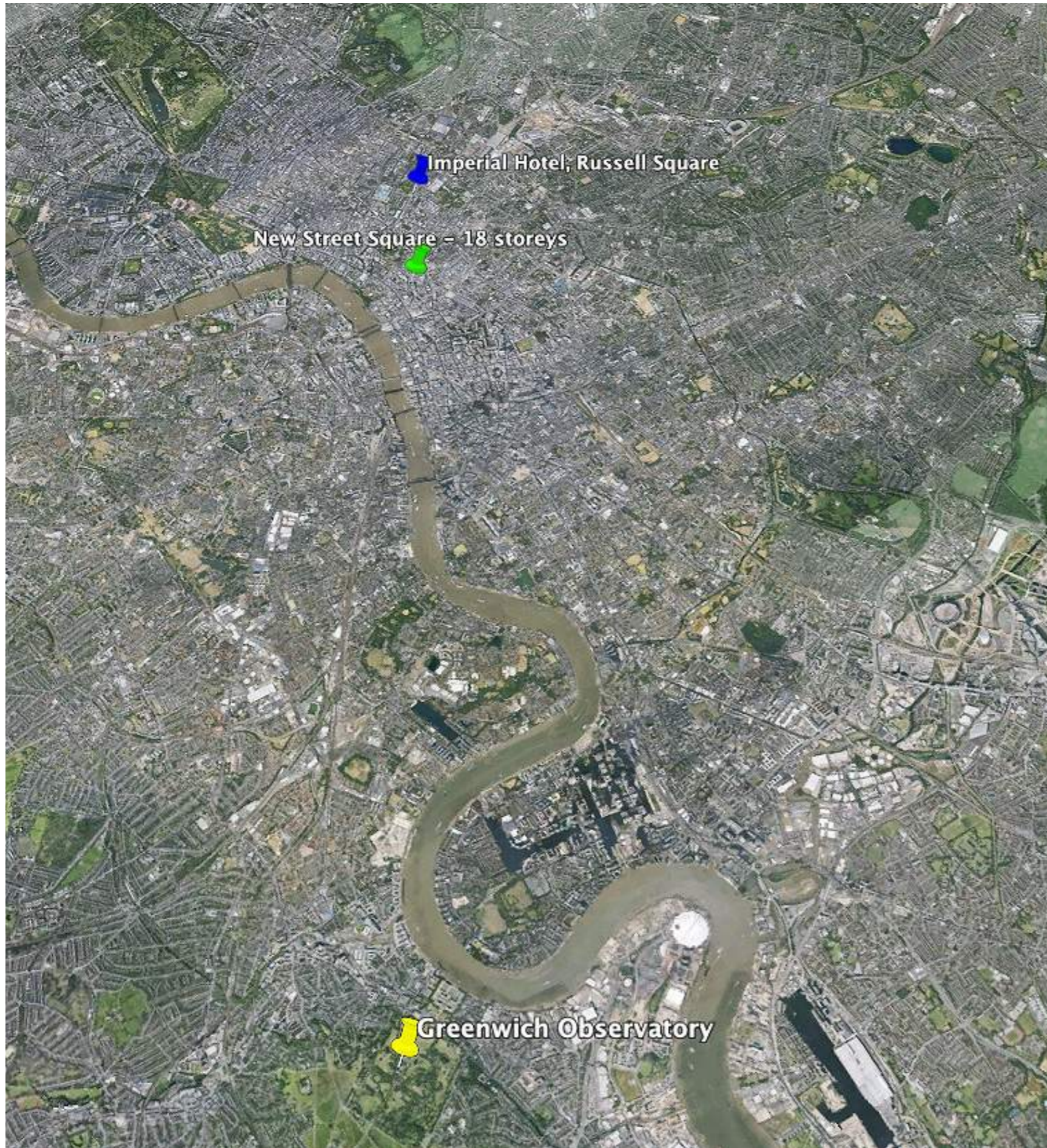
- LED Strip Lighting in Soffits
- Soft Low Level Lighting

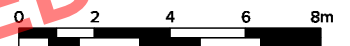
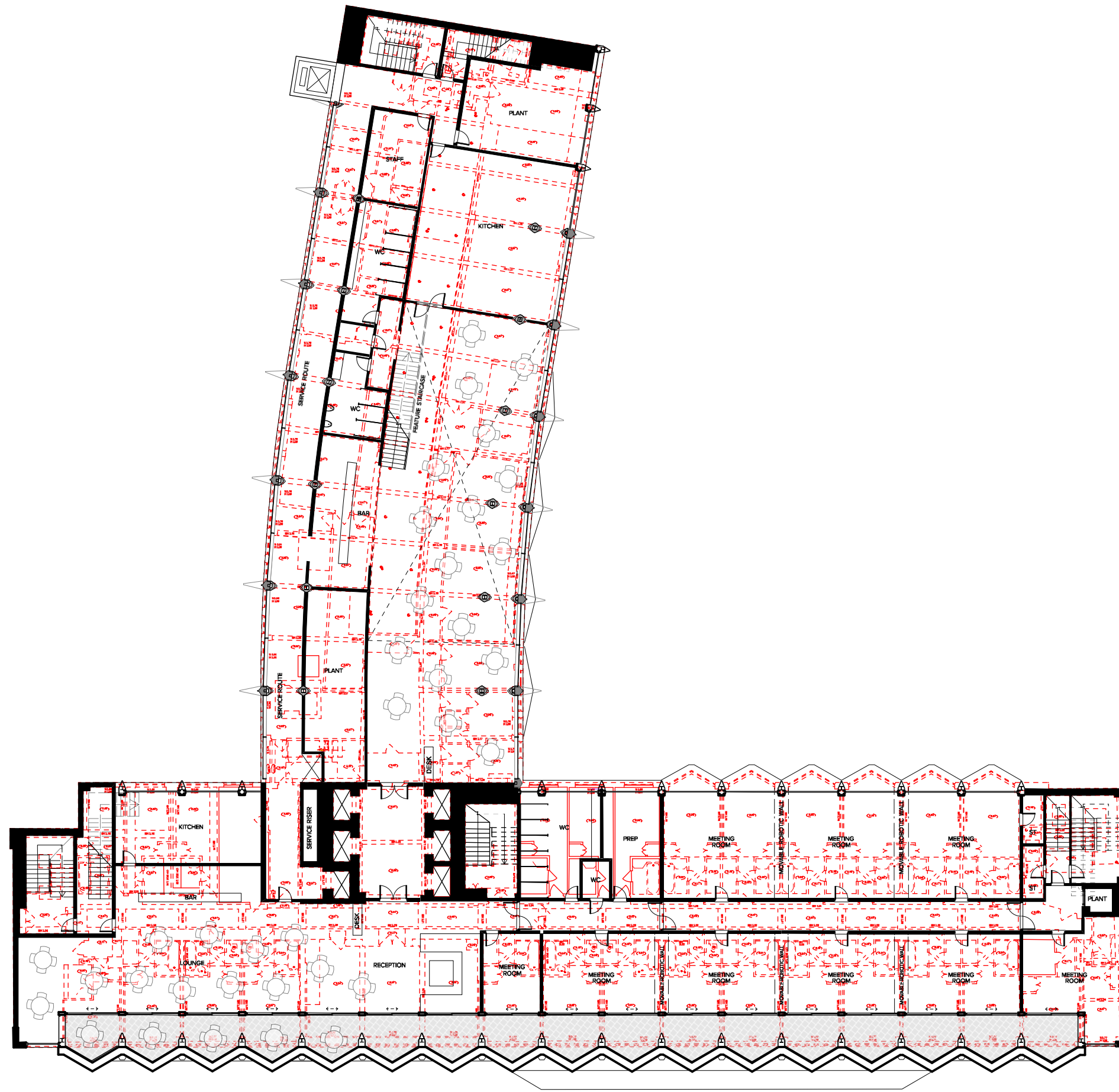


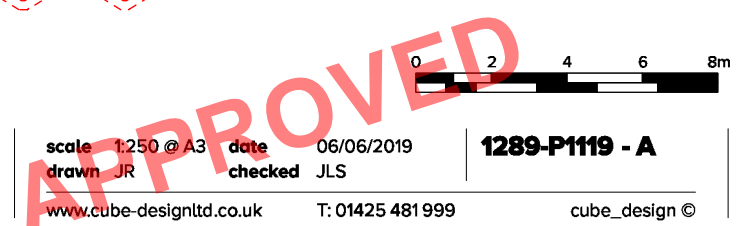
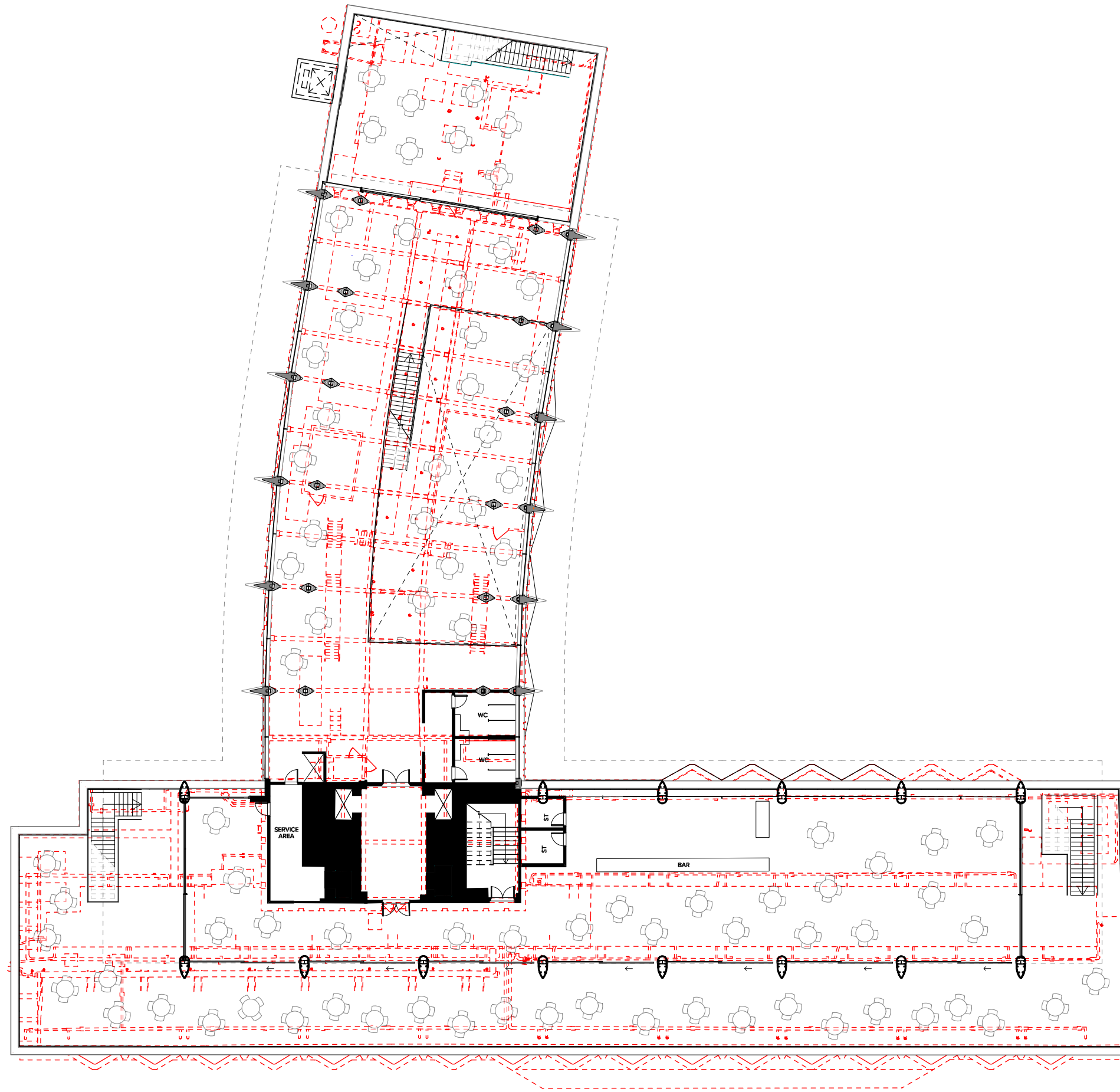
External Lighting to Paved Areas

- LED Strip Light inlays for Wayfinding
- Soft Low Level Lighting











APPROVED