



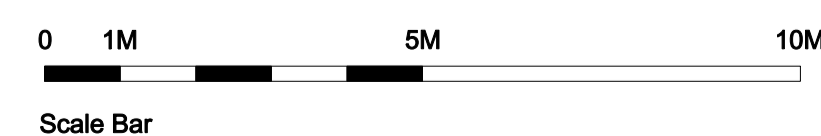
THE ONE TUN

SAFFRON HOUSE

116-117 SAFFRON HILL

- NOTES:**
1. ALL DIMENSIONS IN MM UNLESS OTHERWISE STATED
 2. THIS DRAWING IS TO BE READ IN CONJUNCTION WITH ALL RELEVANT CONTRACT DOCUMENTS
 3. THIS DRAWING IS TO BE READ IN CONJUNCTION WITH ALL ENGINEERS DRAWINGS
 4. DO NOT SCALE FROM THIS DRAWING
 5. REPORT ANY ERRORS, CONTRADICTIONS, & OMISSIONS TO THE ARCHITECT AS SOON AS POSSIBLE
 6. WHEN THIS DRAWINGS IS ISSUED IN DWG FORMAT IT IS AN UNCONTROLLED VERSION ISSUED TO ENABLE THE RECIPIENT TO PREPARE THEIR OWN DRAWINGS FOR WHICH THEY ARE SOLELY RESPONSIBLE. IT IS BASED ON BACKGROUND INFORMATION CURRENT AT TIME OF ISSUE. BEN ADAMS ARCHITECTS ACCEPTS NO LIABILITY FOR ANY SUCH ALTERATIONS OR ADDITIONS TO OR DISCREPANCIES ARISING OUT OF CHANGES TO SUCH BACKGROUND INFORMATION WHICH OCCUR AFTER IT IS ISSUED BY BEN ADAMS ARCHITECTS.

REV.	DATE	DESCRIPTION
-	19.10.2023	ISSUED FOR PLANNING



JOB NO: 22-005
SCALE: 1:200 @ A3 1:100 @ A1
STAGE: PLANNING

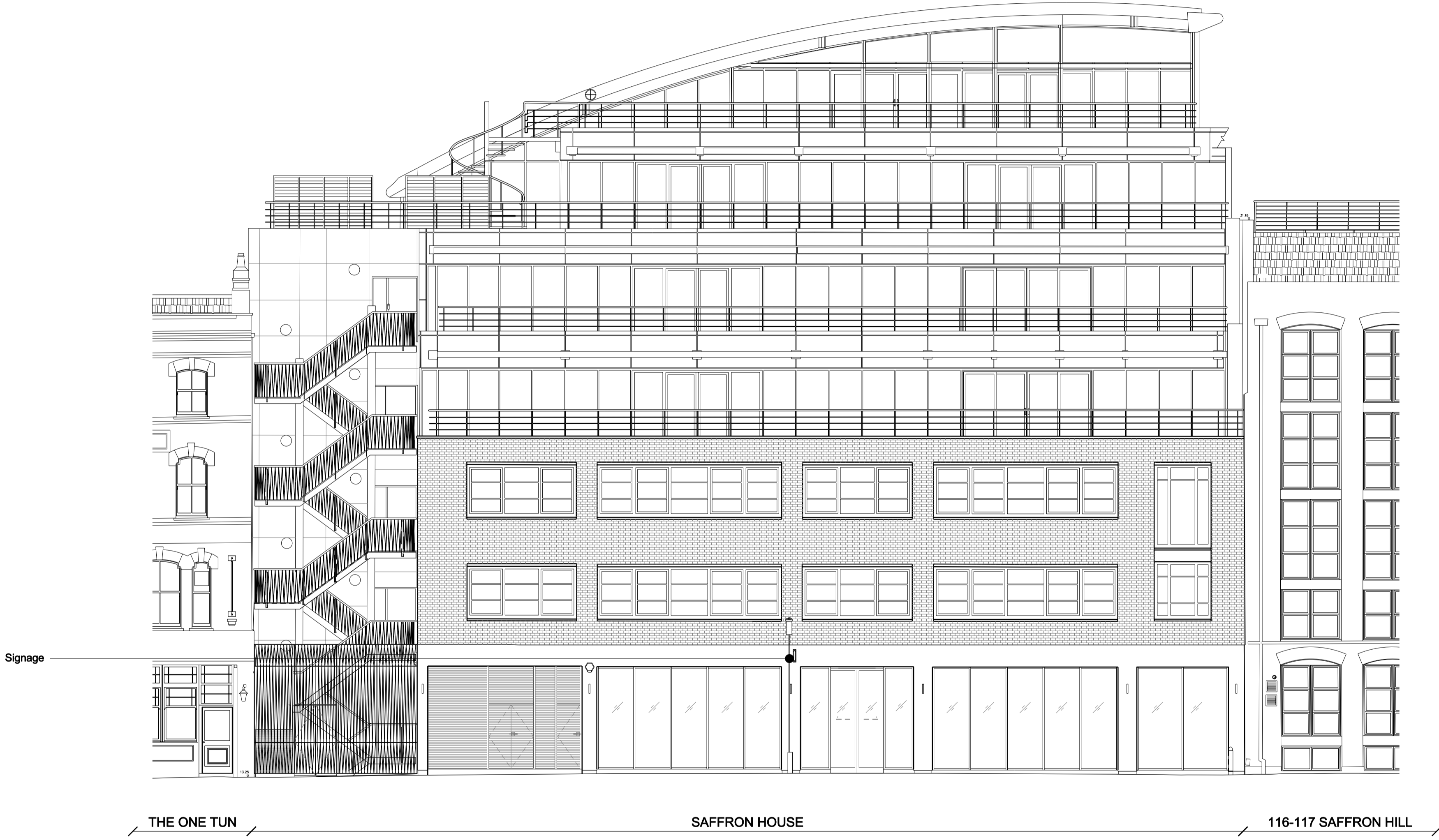
DRAWING NAME: EXISTING EAST ELEVATION

PROJECT NAME: SAFFRON HOUSE

DRAWING NO: P125/-

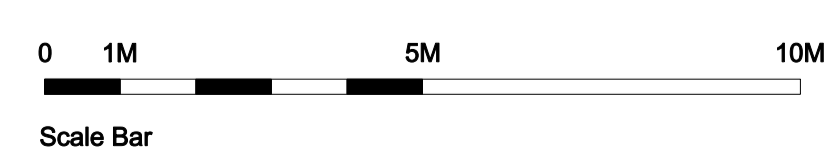
NOTES:

1. ALL DIMENSIONS IN MM UNLESS OTHERWISE STATED
2. THIS DRAWING IS TO BE READ IN CONJUNCTION WITH ALL RELEVANT CONTRACT DOCUMENTS
3. THIS DRAWING IS TO BE READ IN CONJUNCTION WITH ALL ENGINEERS DRAWINGS
4. DO NOT SCALE FROM THIS DRAWING
5. REPORT ANY ERRORS, CONTRADICTIONS, & OMISSIONS TO THE ARCHITECT AS SOON AS POSSIBLE
6. WHEN THIS DRAWING IS ISSUED IN DWG FORMAT IT IS AN UNCONTROLLED VERSION ISSUED TO ENABLE THE RECIPIENT TO PREPARE THEIR OWN DRAWINGS FOR WHICH THEY ARE SOLELY RESPONSIBLE. IT IS BASED ON BACKGROUND INFORMATION CURRENT AT TIME OF ISSUE. BEN ADAMS ARCHITECTS ACCEPTS NO LIABILITY FOR ANY SUCH ALTERATIONS OR ADDITIONS TO OR DISCREPANCIES ARISING OUT OF CHANGES TO SUCH BACKGROUND INFORMATION WHICH OCCUR AFTER IT IS ISSUED BY BEN ADAMS ARCHITECTS.

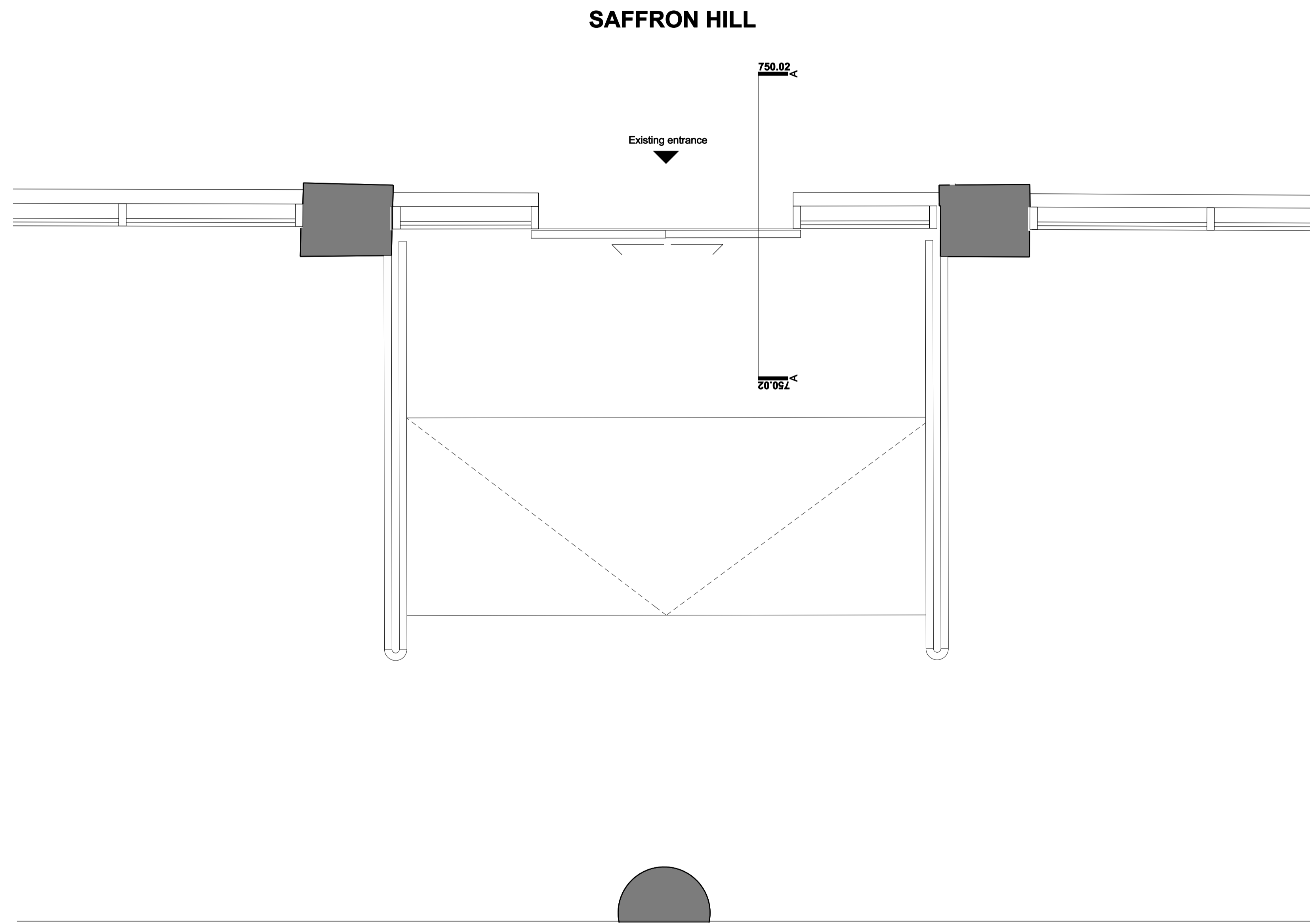


REV.	DATE	DESCRIPTION
-	19.10.2023	ISSUED FOR PLANNING

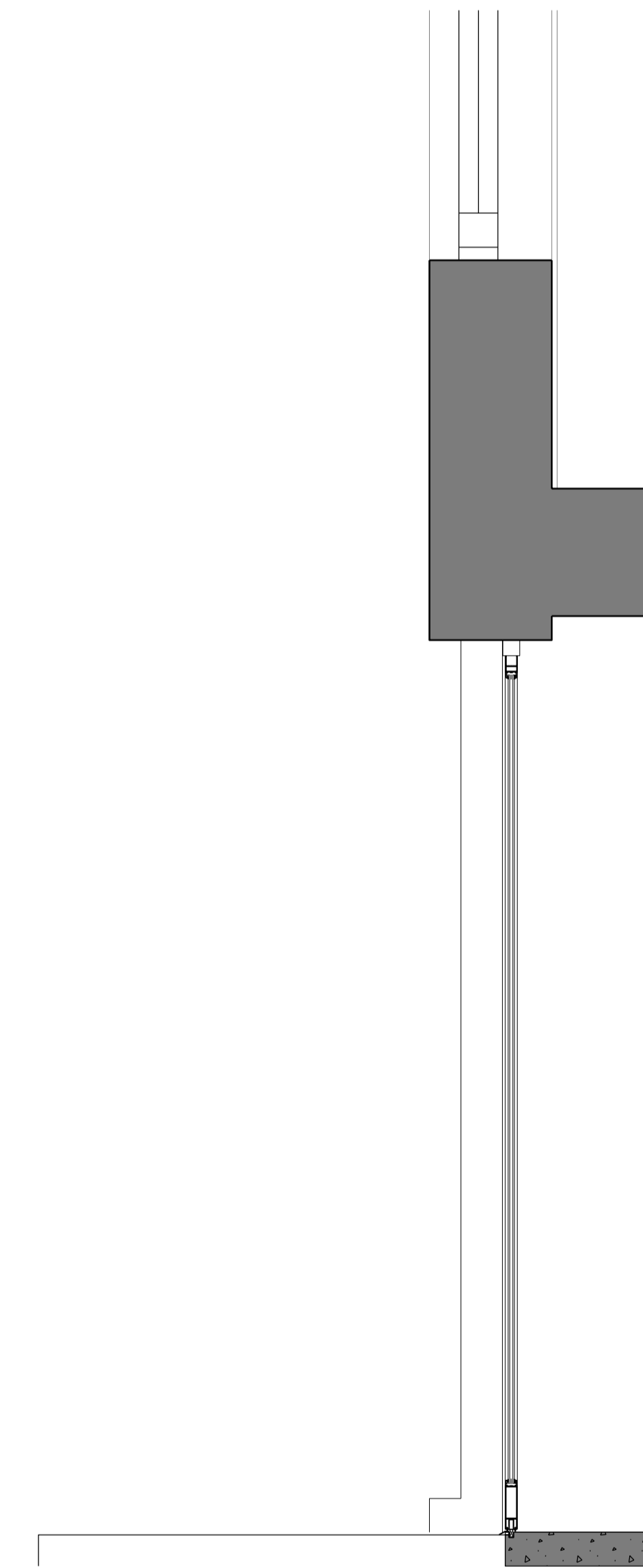
JOB NO: 22-005
 SCALE: 1:200 @ A3 1:100 @ A1
 STAGE: PLANNING
 DRAWING NAME: PROPOSED EAST ELEVATION
 PROJECT NAME: SAFFRON HOUSE
 DRAWING NO: **P405/-**



- NOTES:
1. ALL DIMENSIONS IN MM UNLESS OTHERWISE STATED
 2. THIS DRAWING IS TO BE READ IN CONJUNCTION WITH ALL RELEVANT CONTRACT DOCUMENTS
 3. THIS DRAWING IS TO BE READ IN CONJUNCTION WITH ALL ENGINEER'S DRAWINGS
 4. DO NOT SCALE FROM THIS DRAWING
 5. REPORT ANY ERRORS, CONTRADICTIONS, & OMISSIONS TO THE ARCHITECT AS SOON AS POSSIBLE
 6. WHEN THIS DRAWING IS ISSUED IN DWG FORMAT IT IS AN UNCONTROLLED VERSION ISSUED TO ENABLE THE RECIPIENT TO PREPARE THEIR OWN DRAWINGS FOR WHICH THEY ARE SOLELY RESPONSIBLE. IT IS BASED ON BACKGROUND INFORMATION CURRENT AT TIME OF ISSUE. BEN ADAMS ARCHITECTS ACCEPTS NO LIABILITY FOR ANY SUCH ALTERATIONS OR ADDITIONS TO OR DISCREPANCIES ARISING OUT OF CHANGES TO SUCH BACKGROUND INFORMATION WHICH OCCUR AFTER IT IS ISSUED BY BEN ADAMS ARCHITECTS.

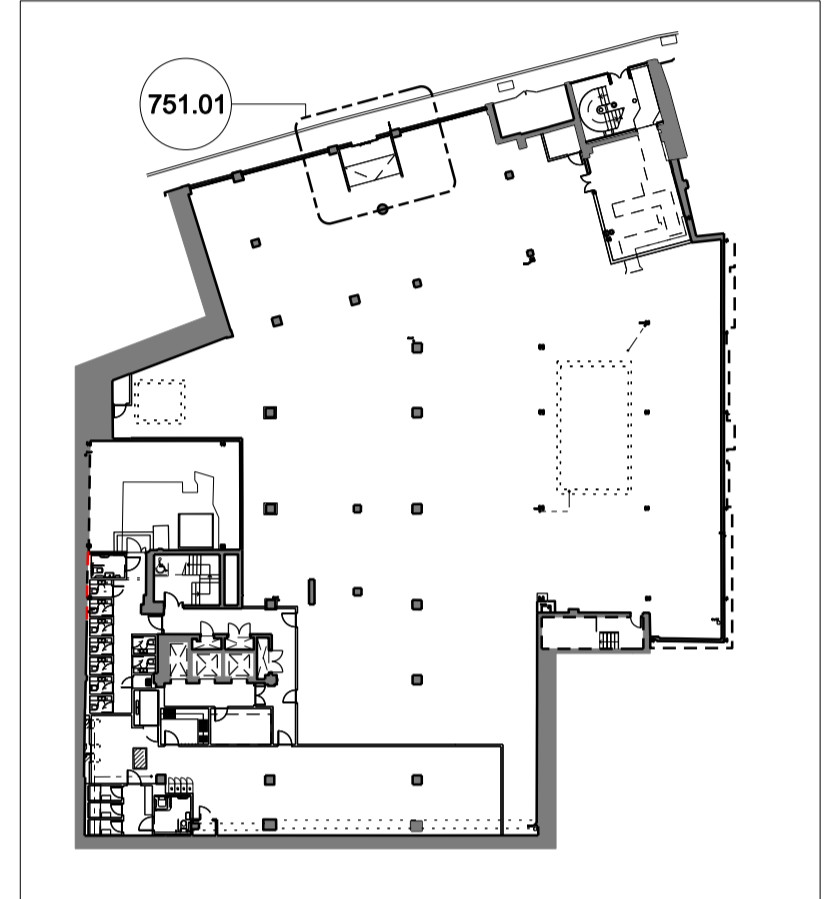


01. EXISTING LOWER GROUND FLOOR



02. EXISTING SAFFRON HILL ENTRANCE SECTION 1:20

KEY PLAN - LOWER GROUND FLOOR



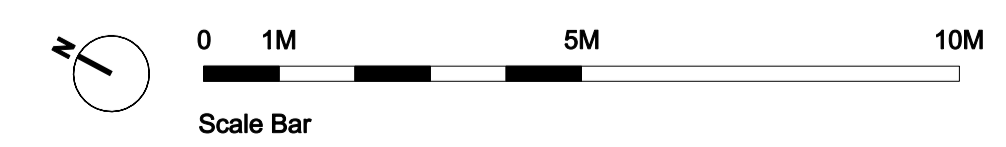
REV.	DATE	DESCRIPTION
-	19.10.2023	ISSUED FOR PLANNING

JOB NO: 22-005
 SCALE: 1:40 @ A3 1:20 @ A1
 STAGE: PLANNING

DRAWING NAME: EXISTING LOWER GROUND FLOOR AND SAFFRON HILL ENTRANCE SECTION

PROJECT NAME: SAFFRON HOUSE

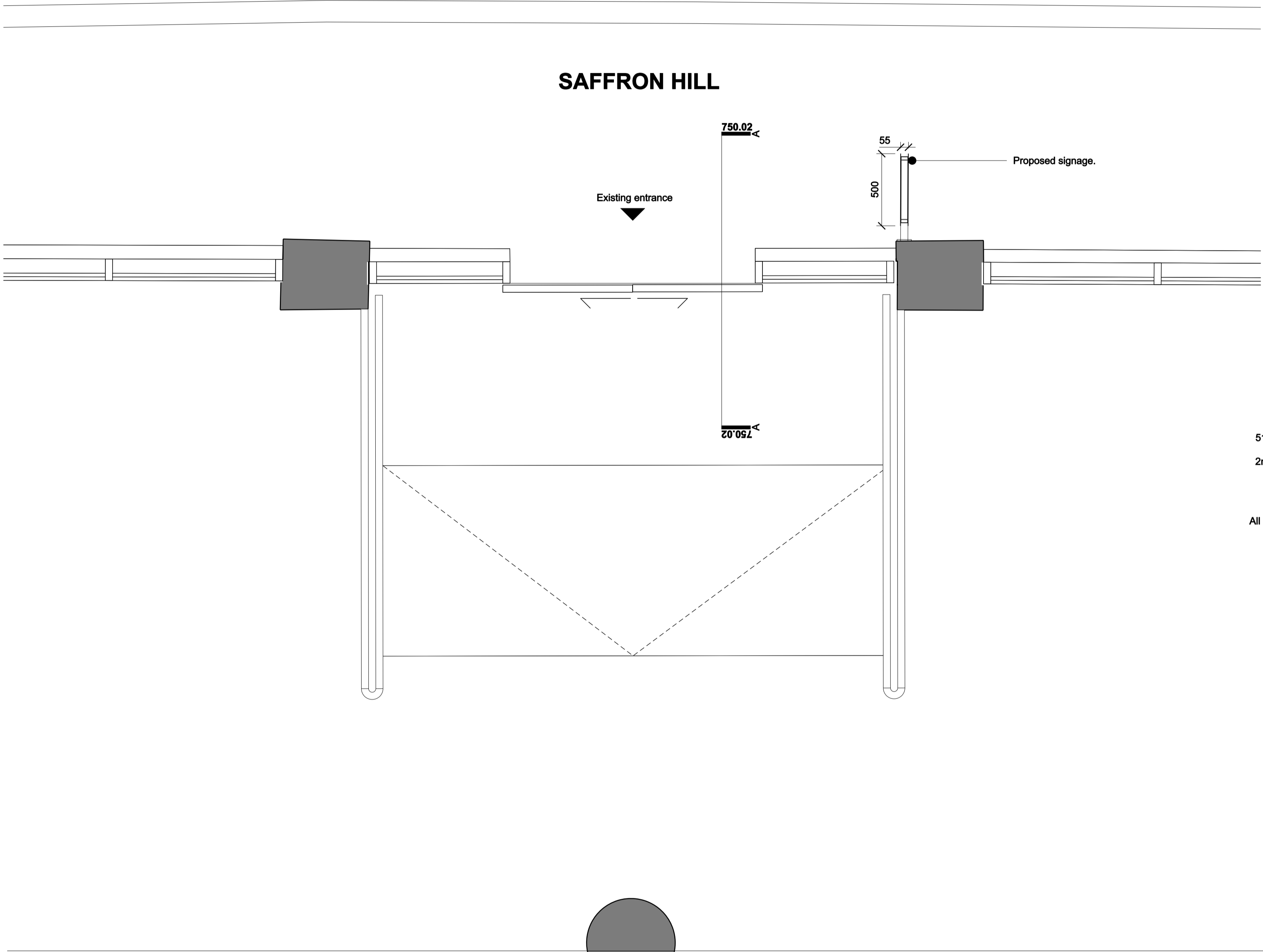
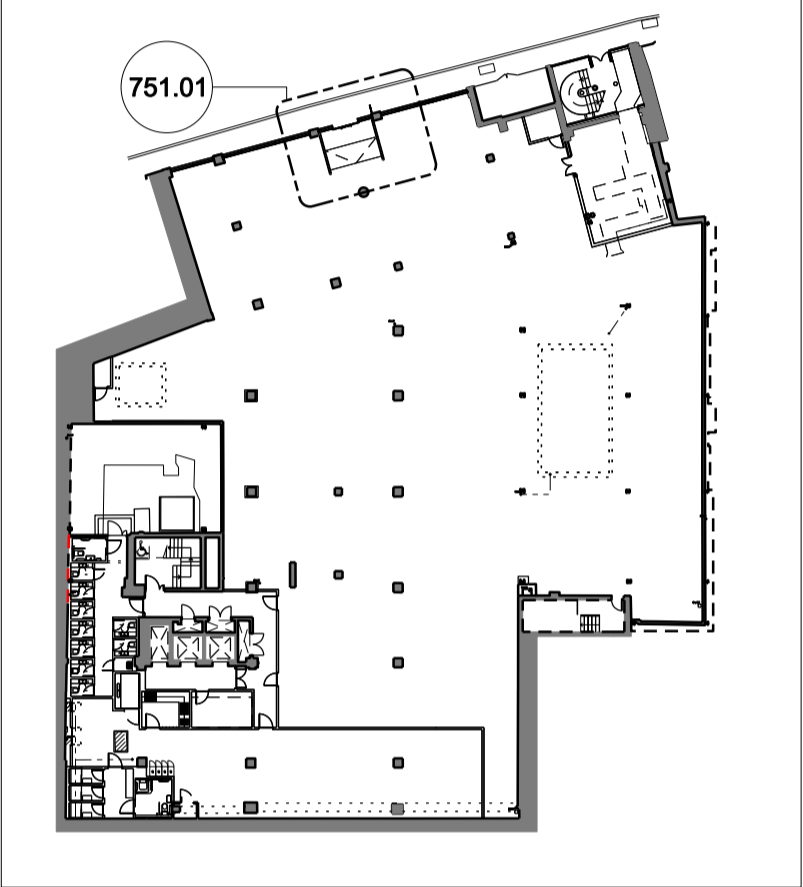
DRAWING NO: P750/-



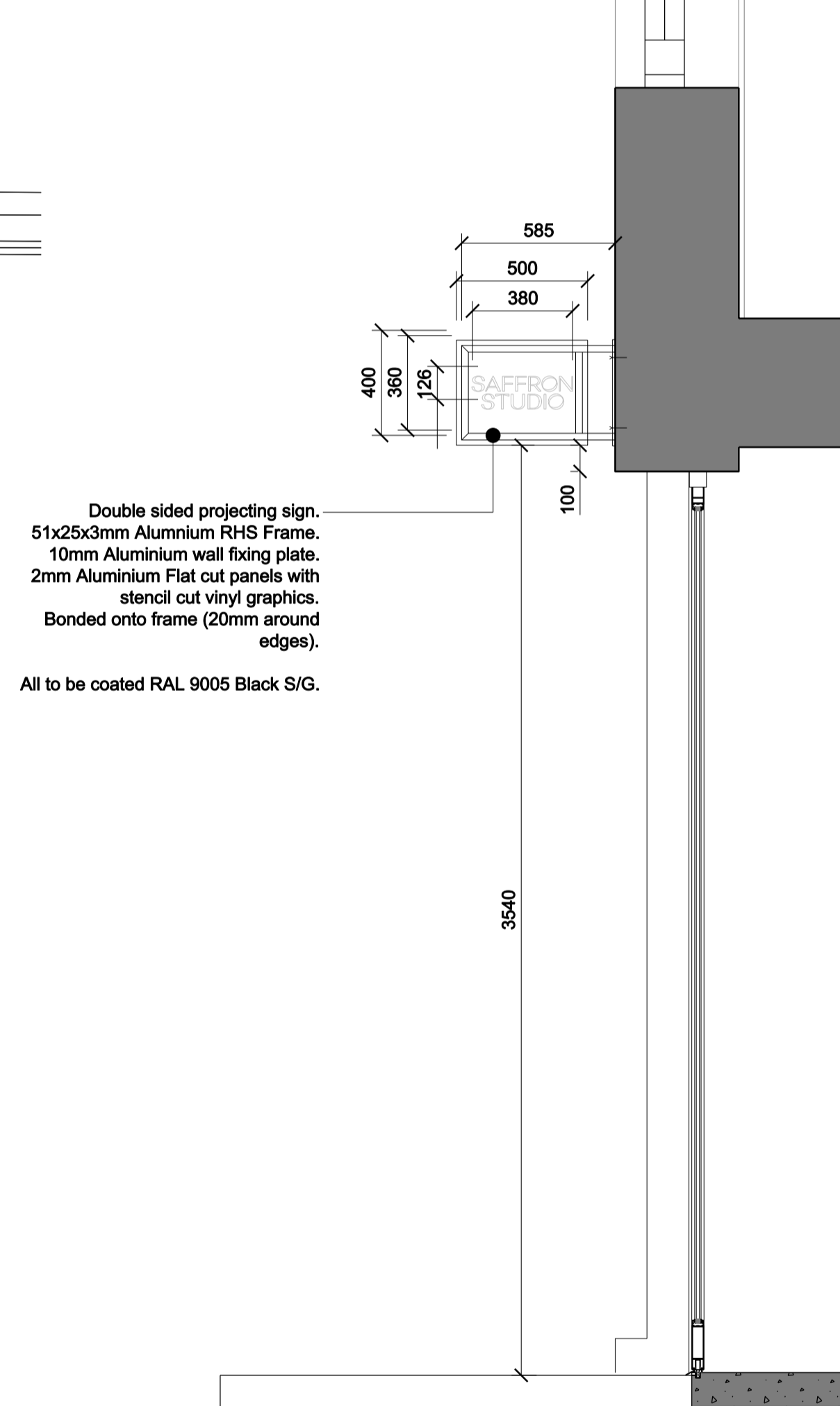
- NOTES:
1. ALL DIMENSIONS IN MM UNLESS OTHERWISE STATED
 2. THIS DRAWING IS TO BE READ IN CONJUNCTION WITH ALL RELEVANT CONTRACT DOCUMENTS
 3. THIS DRAWING IS TO BE READ IN CONJUNCTION WITH ALL ENGINEER'S DRAWINGS
 4. DO NOT SCALE FROM THIS DRAWING
 5. REPORT ANY ERRORS, CONTRADICTIONS, & OMISSIONS TO THE ARCHITECT AS SOON AS POSSIBLE
 6. WHEN THIS DRAWING IS ISSUED IN DWG FORMAT IT IS AN UNCONTROLLED VERSION ISSUED TO ENABLE THE RECIPIENT TO PREPARE THEIR OWN DRAWINGS FOR WHICH THEY ARE SOLELY RESPONSIBLE. IT IS BASED ON BACKGROUND INFORMATION CURRENT AT TIME OF ISSUE. BEN ADAMS ARCHITECTS ACCEPTS NO LIABILITY FOR ANY SUCH ALTERATIONS OR ADDITIONS TO OR DISCREPANCIES ARISING OUT OF CHANGES TO SUCH BACKGROUND INFORMATION WHICH OCCUR AFTER IT IS ISSUED BY BEN ADAMS ARCHITECTS.

KEY DIMENSIONS:
 Height (mm): 400
 Width (mm): 500
 Depth (mm): 55
 Height from the ground to the base of the advertisement (mm) 3540

KEY PLAN - LOWER GROUND FLOOR

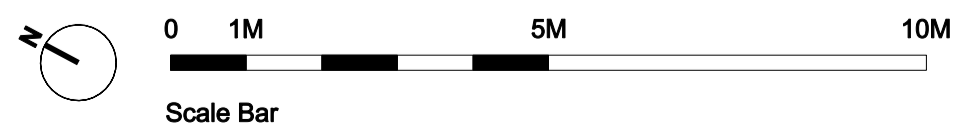


01. EXISTING LOWER GROUND FLOOR



Double sided projecting sign.
 51x25x3mm Aluminium RHS Frame.
 10mm Aluminium wall fixing plate.
 2mm Aluminium Flat cut panels with stencil cut vinyl graphics.
 Bonded onto frame (20mm around edges).
 All to be coated RAL 9005 Black S/G.

02. EXISTING SAFFRON HILL ENTRANCE SECTION 1:20



REV.	DATE	DESCRIPTION
-	19.10.2023	ISSUED FOR PLANNING

JOB NO: 22-005
 SCALE: 1:40 @ A3 1:20 @ A1
 STAGE: PLANNING
 DRAWING NAME: PROPOSED LOWER GROUND FLOOR AND SAFFRON HILL ENTRANCE SECTION
 PROJECT NAME: SAFFRON HOUSE
 DRAWING NO: P751/-



- NOTES:
1. ALL DIMENSIONS IN MM UNLESS OTHERWISE STATED
 2. THIS DRAWING IS TO BE READ IN CONJUNCTION WITH ALL RELEVANT CONTRACT DOCUMENTS
 3. THIS DRAWING IS TO BE READ IN CONJUNCTION WITH ALL ENGINEER'S DRAWINGS
 4. DO NOT SCALE FROM THIS DRAWING
 5. REPORT ANY ERRORS, CONTRADICTIONS, & OMISSIONS TO THE ARCHITECT AS SOON AS POSSIBLE
 6. WHEN THIS DRAWINGS IS ISSUED IN DWG FORMAT IT IS AN UNCONTROLLED VERSION ISSUED TO ENABLE THE RECIPIENT TO PREPARE THEIR OWN DRAWINGS FOR WHICH THEY ARE SOLELY RESPONSIBLE. IT IS BASED ON BACKGROUND INFORMATION CURRENT AT TIME OF ISSUE. BEN ADAMS ARCHITECTS ACCEPTS NO LIABILITY FOR ANY SUCH ALTERATIONS OR ADDITIONS TO OR DISCREPANCIES ARISING OUT OF CHANGES TO SUCH BACKGROUND INFORMATION WHICH OCCUR AFTER IT IS ISSUED BY BEN ADAMS ARCHITECTS.

REV.	DATE	DESCRIPTION
-	19.10.2023	ISSUED FOR PLANNING

JOB NO:	22-005
SCALE:	
STAGE:	PLANNING
DRAWING NAME:	PROPOSED SIGN VISUAL
PROJECT NAME:	SAFFRON HOUSE
DRAWING NO:	P752/-