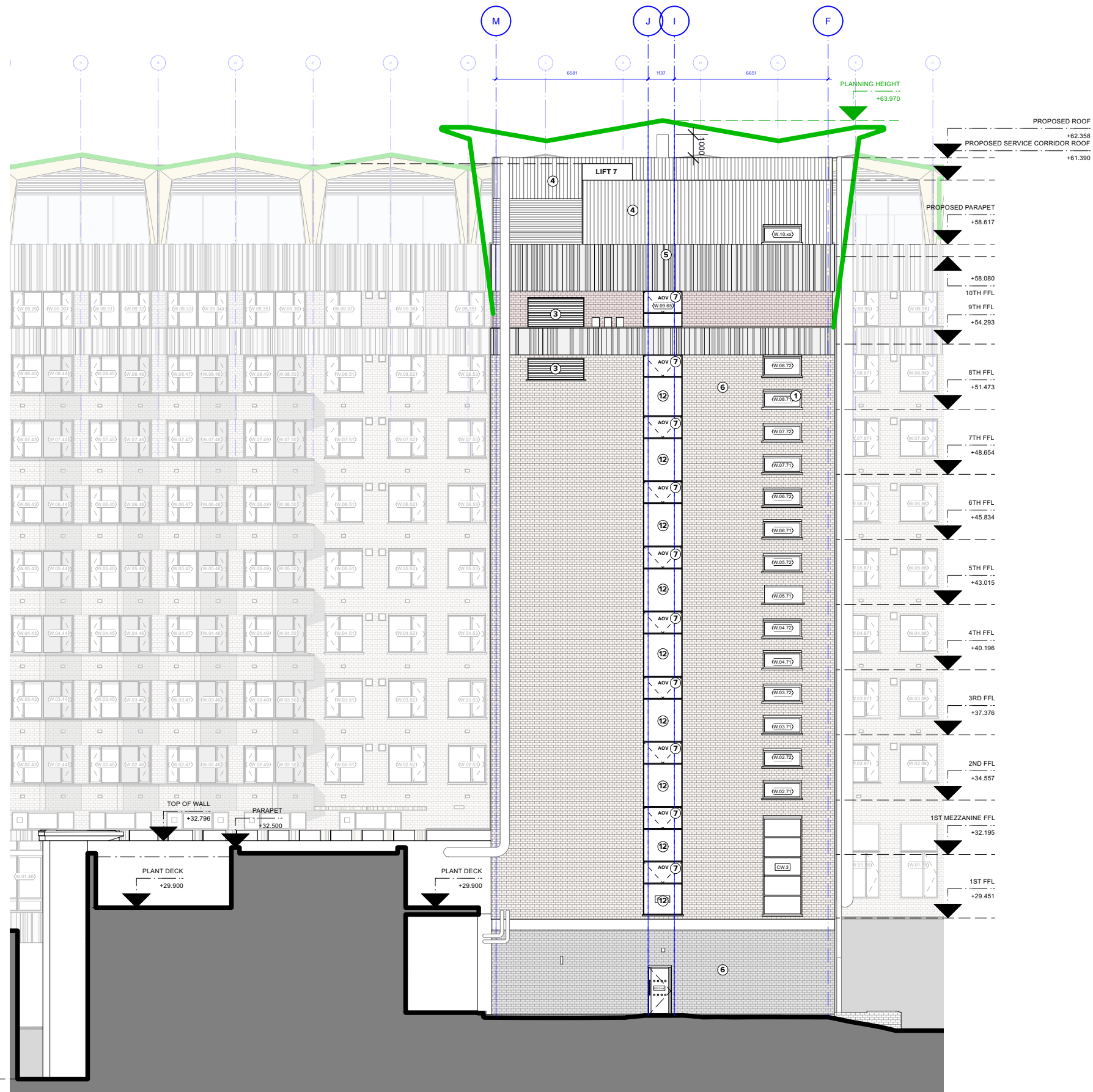


KEY

PLANNING LINE AS APPROVED
APPLICATION REFERENCE: 2019/2985/P

SOURCES:

Survey supplied by Maltby Surves. Original data received April 2018, with updates October 2018 and March 2019.



MATERIALS KEY	
1	WINDOWS TO BE REPLACED WITH ALUMINIUM DOUBLE GLAZED UNITS WITH POLYESTER POWDER COATED.
2	GLAZING NEW DOUBLE GLAZED ALUMINIUM UNITS WITH PPC. SEAMLESS GLAZING DOORS.
3	LOUVRES ALUMINIUM PPC GRILLES TO MATCH THE WINDOWS FRAME.
4	CLADDING SEAMLESS ZINC SYSTEM. FLASHING TO BE PROVIDED TO THE EDGE OF THE ROOF AND PARAPETS.
5	CONCRETE BAND NEW CONCRETE BAND TO BE PROVIDED AT 10TH LEVEL. TO MATCH THE EXISTING APPEARANCE.
6	EXISTING FACADE WHOLE FACADE TO BE CLEANED AND WASHED. TO MAKE GOOD WHERE NECESSARY.
7	AUTOMATIC OPENING VENTS CLEAR 15.50M SMOKE VENTILATION AS PER FIRE CONSULTANT REPORT.
8	GREEN WALL PLANTING WALL TO BE SUITABLE FOR SEMI-SHADED AREAS.
9	REMOVAL OF EXISTING CANOPY TO BE ERECTED BACK AFTER PLANT WORKS.
10	FRANCHISE DUCT 3000X1600MM DUCT AS PER M&E PACK OF INFORMATION.
11	BRICK NEW BRICK WALL TO MATCH THE MAIN HOTEL PATTERN AND COLOUR.
12	OPAQUE GLAZING COLOUR TBC.
13	STEEL DOOR WITH INTEGRATED LOUVRES FREE AIR OF THE LOUVRES TO BE IDENTIFY BY M&E CONSULTANT.
14	'BRONZE' CLADDING FEATURE BRONZE COLOUR CLADDING. PRINCIPLES OF CLADDING AS PLANNING APPROVED DRAWING 1289-FR005 A.
15	TIMBER CLADDING FEATURE TIMBER CLADDING, VERTICAL STRIPS.
16	ROOF FEATURE RHEINZINK SKY BAR, LEAD COLOUR.
17	FRAMELESS BALUSTRADE AS IDENTIFIED ON APPROVED DRAWING 1289-FR043 A.
18	GLAZED ENCLOSURE TO STAIRCASE GLASS ENCLOSURE TO BE DOUBLE GLAZED UNITS TO FOLLOW THE PROFILE OF THE STAIRCASE FITCH.

