

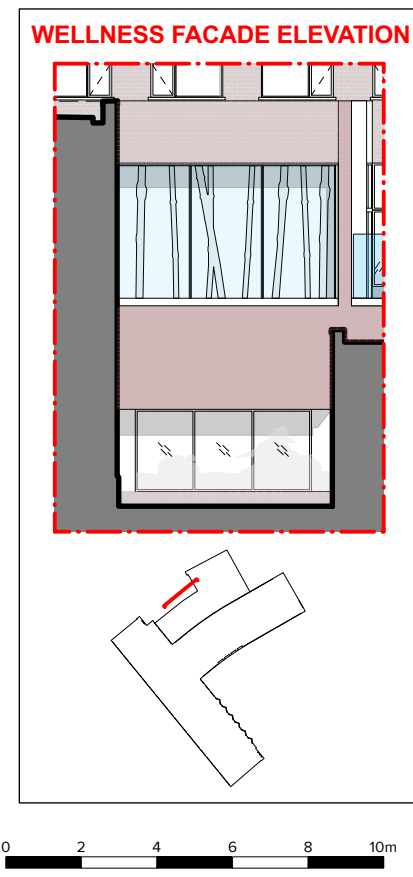
KEY

PLANNING LINE AS APPROVED
APPLICATION REFERENCE: 2019/2985/P

SOURCES:
Survey supplied by Malby Surves. Original data received April 2018, with updates October 2018 and March 2019.

MATERIALS KEY

- WINDOWS TO BE REPLACED WITH ALUMINIUM DOUBLE GLAZED UNITS WITH POLYESTER POWDER COATED.
- GLAZING NEW DOUBLE GLAZED ALUMINIUM UNITS WITH PPC SEAMLESS GLAZING DOORS.
- LOUVRES ALUMINIUM PPC GRILLES TO MATCH THE WINDOWS FRAME.
- CLADDING SEAMLESS ZINC SYSTEM. FLASHING TO BE PROVIDED TO THE EDGE OF THE ROOF AND PARAPETS.
- CONCRETE BAND NEW CONCRETE BAND TO BE PROVIDED AT 10TH LEVEL TO MATCH THE EXISTING APPEARANCE.
- EXISTING FACADE WHOLE FACADE TO BE CLEANED AND WASHED TO MAKE GOOD WHERE NECESSARY.
- AUTOMATIC OPENING VENTS CLEAR 15 SQM SMOKE VENTILATION AS PER FIRE CONSULTANT REPORT.
- GREEN WALL PLANTING WALL TO BE SUITABLE FOR SEMI-SHADED AREAS.
- REMOVAL OF EXISTING CANOPY TO BE ERECTED BACK AFTER PLANT WORKS.
- FRANCHISE DUCT 300X1600MM DUCT AS PER M&E PACK OF INFORMATION.
- BRICK NEW BRICK WALL TO MATCH THE MAIN HOTEL PATTERN AND COLOUR
- OPAQUE GLAZING COLOUR TBC
- STEEL DOOR WITH INTEGRATED LOUVRES FREE AIR OF THE LOUVRES TO BE IDENTIFY BY M&E CONSULTANT.
- 'BRONZE' CLADDING FEATURE BRONZE COLOUR CLADDING. PRINCIPLES OF CLADDING AS PLANNING APPROVED DRAWING 1289-P1005 A.
- TIMBER CLADDING FEATURE TIMBER CLADDING, VERTICAL STRIPS
- ROOF FEATURE RHEINZINK SKY BAR. LEAD COLOUR.
- FRAMELESS BALUSTRADE AS IDENTIFIED ON APPROVED DRAWING 1289-P1043 A.
- GLAZED ENCLOSURE TO STAIRCASE GLASS ENCLOSURE TO BE DOUBLE GLAZED UNITS TO FOLLOW THE PROFILE OF THE STAIRCASE PITCH.



Revisions: A VL JLS 20/10/2023 Initial Issue
B VL JLS 25/10/2023 Stair 2 and 4 added.