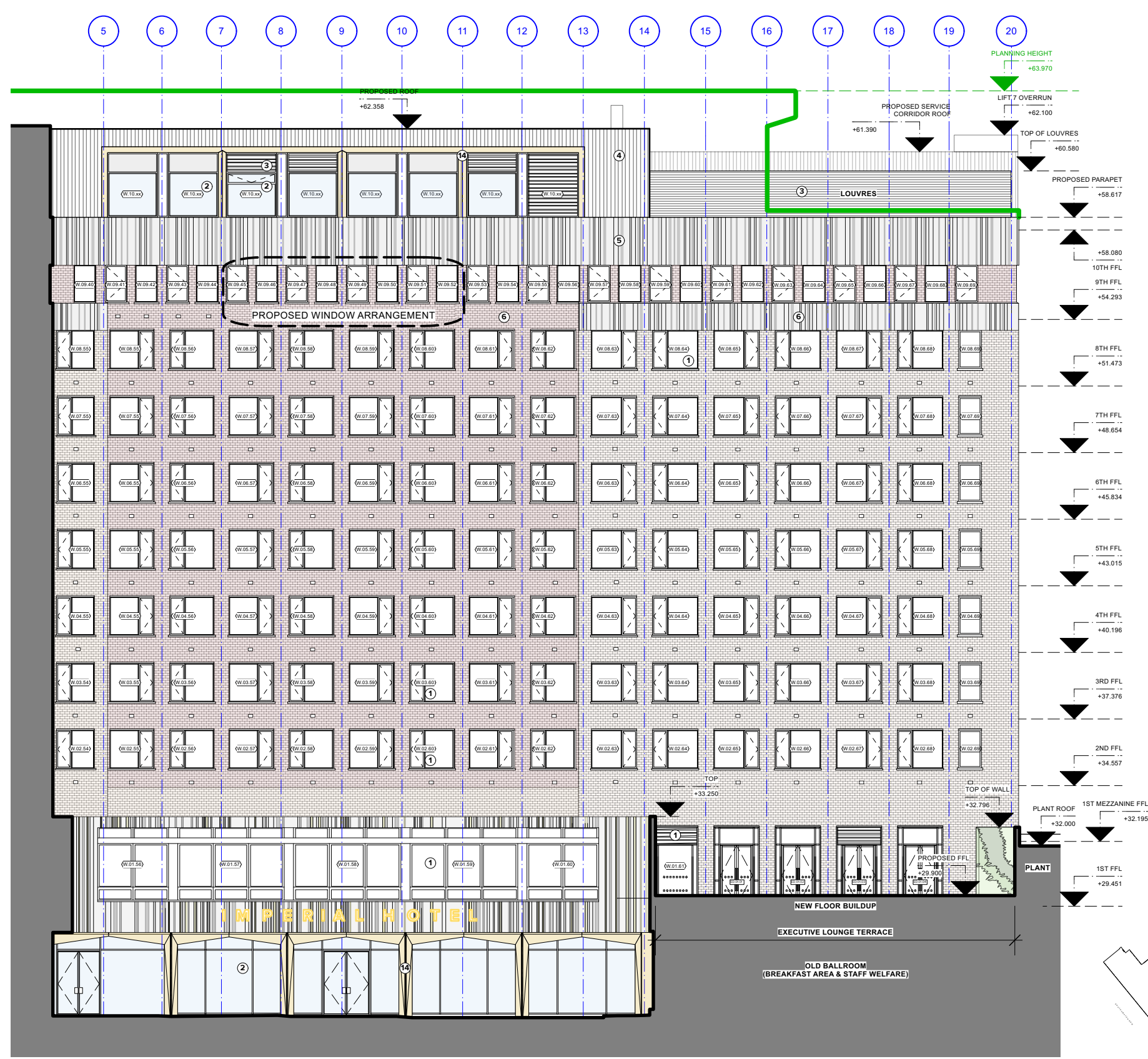
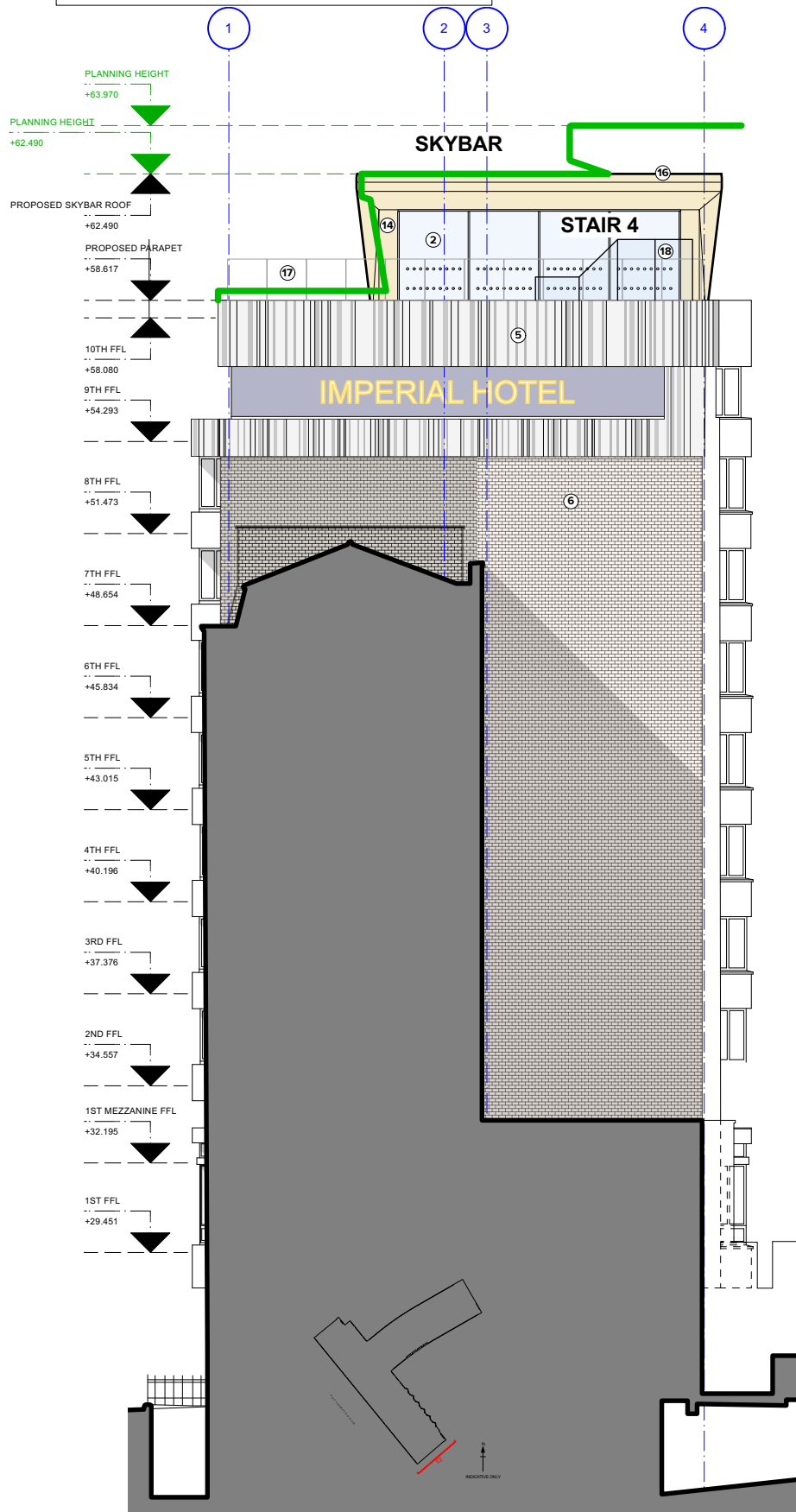


KEY

PLANNING LINE AS APPROVED
APPLICATION REFERENCE: 2019/2985/P



MATERIALS KEY

- 1 WINDOWS TO BE REPLACED WITH ALUMINIUM DOUBLE GLAZED UNITS WITH POLYESTER POWDER COATED.
- 2 GLAZING NEW DOUBLE GLAZED ALUMINIUM UNITS WITH PPC SEAMLESS GLAZING DOORS.
- 3 LOUVRES ALUMINIUM PPC GRILLES TO MATCH THE WINDOWS FRAME.
- 4 CLADDING SEAMLESS ZINC SYSTEM, FLASHING TO BE PROVIDED TO THE EDGE OF THE ROOF AND PARAPETS.
- 5 CONCRETE BAND NEW CONCRETE BAND TO BE PROVIDED AT 10TH LEVEL TO MATCH THE EXISTING APPEARANCE.
- 6 EXISTING FACADE WHOLE FACADE TO BE CLEANED AND WASHED, TO MAKE GOOD WHERE NECESSARY.
- 7 AUTOMATIC OPENING VENTS CLEAR 1.5 SQM SMOKE VENTILATION AS PER FIRE CONSULTANT REPORT.
- 8 GREEN WALL PLANTING WALL TO BE SUITABLE FOR SEMI-SHADED AREAS.
- 9 REMOVAL OF EXISTING CANOPY TO BE ERRECTED BACK AFTER PLANT WORKS.
- 10 FRANCHISE DUCT 300X1600MM DUCT AS PER M&E PACK OF INFORMATION.
- 11 BRICK NEW BRICK WALL TO MATCH THE MAIN HOTEL PATTERN AND COLOUR.
- 12 OPAQUE GLAZING COLOUR TBC.
- 13 STEEL DOOR WITH INTEGRATED LOUVRES FREE AIR OF THE LOUVRES TO BE IDENTIFY BY M&E CONSULTANT.
- 14 'BRONZE' CLADDING FEATURE BRONZE COLOUR CLADDING. PRINCIPLES OF CLADDING AS PLANNING APPROVED DRAWING 1289-P1005 A.
- 15 TIMBER CLADDING FEATURE TIMBER CLADDING, VERTICAL STRIPS.
- 16 ROOF FEATURE RHEINZINK SKY BAR, LEAD COLOUR.
- 17 FRAMELESS BALUSTRADE AS IDENTIFIED ON APPROVED DRAWING 1289-P1043 A.
- 18 GLAZED ENCLOSURE TO STAIRCASE GLASS ENCLOSURE TO BE DOUBLE GLAZED UNITS TO FOLLOW THE PROFILE OF THE STAIRCASE PITCH.

SOURCES:
Survey supplied by Matby Surves. Original data received April 2018, with updates October 2018 and March 2019.