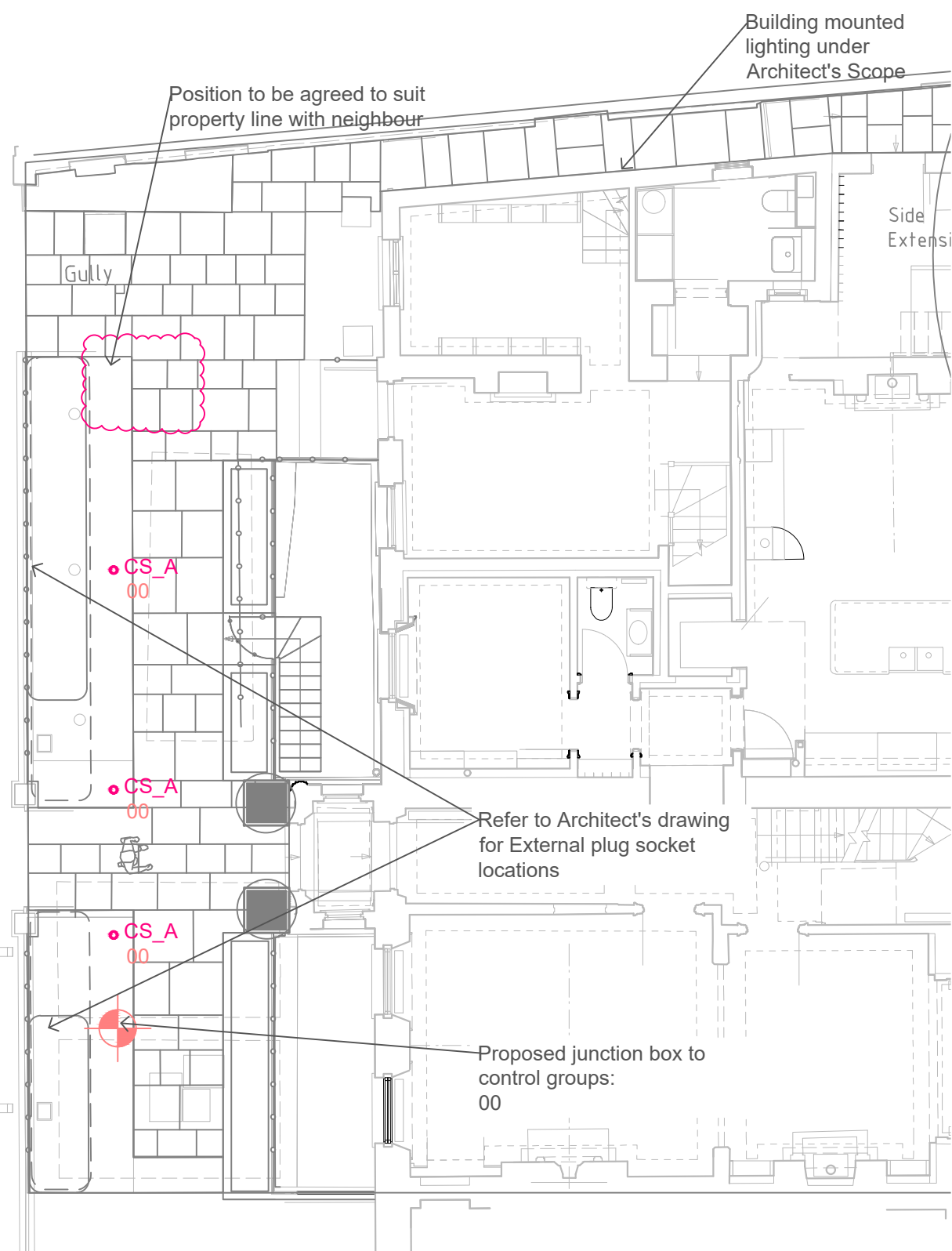


01 Rear Garden Lighting Plan



02 Rear Garden Lighting Plan

**KEY**

- CS\_A Client Supply - Path light
- CS\_C1 Client Supply - Uplight - 10W wide
- CS\_C2 Client Supply - Uplight - 10W diffuse
- CS\_C3 Client Supply - Uplight - 3W
- CS\_D Client Supply - Wall/Building mounted light
- CS\_E Client Supply - Building internal light

Exterior enclosure/Junction box to house LED drivers and Casambi units. For exact locations refer to Landscape Architect layout drawing.

External plug sockets. Exact locations refer to Landscape Architect layout drawing.

\*\*Refer to Lighting Equipment Specification for luminaire equipment details (2224-SP-001)

Indicative Quantities and Loading						
Control Group	Proposed Scene Name (tbc)	Luminaire Reference	Quantity in Group	Wattage/unit	Total Wattage	Driver Quantity and Max Wattage
00	Front Garden	CS_A (Platek Dot)	3 (max 4)	2.5	7.5W(10W max)	1no - 12W max (NO CASAMBI)
01	Upper Terrace	CS_A (Platek Dot)	8	2.5W	20W	1no - 24W max
02	Dining Terrace (Hornbeam Tree)	CS_C1 (L&L Ginko 3.0 Wide)	1	10W	10W	1no - 12W max
04	Dining Terrace	CS_A (Platek Dot)	5	3.5W	17.5W	1no - 24W max
05	Dining Terrace (Shed Storage)	CS_D (tbc by architect)	1	10W (max)	10W (max)	n/a assumed 1no replaceable lamp with 1no. Casambi unit - tbc
07	Dining Terrace (Path to Poolhouse)	CS_A (Platek Dot)	6	2.5W	15W	1no - 24W max
08	Dining Terrace (Magnolia Tree)	CS_C2 (L&L Ginko 3.0 Diffuse)	2	10W	20W	1no - 24W max
09	Dining Terrace (Arched Wall Magnolia Side)	CS_C3 (L&L Ginko 1.0)	5	3.5W	17.5W	1no - 24W max
10	Pool (Arched Wall Pool Side)	CS_C3 (L&L Ginko 1.0)	5	3.5W	17.5W	1no - 24W max
11	Dining Terrace (Pool Equip Storage Shed)	CS_D (tbc by architect)	1	10W (max)	10W (max)	n/a assumed 1no replaceable lamp with 1no. Casambi unit - tbc
12	Pool (Perimeter Lighting)	CS_A (Platek Dot)	3	3.5W	10.5W	1no - 12W max
13	Pool (Hazel Tree)	CS_C3 (L&L Ginko 1.0)	2	3.5W	7W	1no - 12W max
14	Pool (Lilac Tree)	CS_C3 (L&L Ginko 1.0)	2	3.5W	7W	1no - 12W max
15	Woodland	CS_D (tbc by architect)	1	10W (max)	10W (max)	n/a assumed 1no replaceable lamp with 1no. Casambi unit - tbc
16	Woodland	CS_D (tbc by architect)	1	10W (max)	10W (max)	n/a assumed 1no replaceable lamp with 1no. Casambi unit - tbc

Note:  
Lighting equipment quantities and exact locations to be confirmed during detail design.  
Indicative quantities and locations to be confirmed on site. Driver allowances have been factored in.

**Not** included in table above - to be confirmed by architect/landscape architect:  
Lighting mounted onto main house  
Lighting installed onto pool house  
External power sockets  
Internal power sockets to interior of sheds/structures

Disclaimer:  
1. For complete luminaire breakdown refer to Light Follows Behaviour luminaire schedule.  
2. Where dimensions are not given drawings must not be scaled.  
3. Contractors must check all dimensions on site.  
4. Any discrepancies must be reported to the lighting consultant & architect before proceeding.  
5. In event of conflict between drawings refer to the lighting consultant & architect before proceeding.  
6. All copyright to this drawing is retained by Light Follows Behaviour Ltd.

REV.	DESCRIPTION	BY	DATE
A	First issue of information	LM	12.07.2023
B	DRAFT issue for costing	LM	28.07.2023
C	Connection pillars removed	LM	01.08.2023
D	Stage 4 Updates	LM	04.10.2023
E	Background update / Ginko 1.0 wattage	LM	08.11.2023

**LIGHT FOLLOWS BEHAVIOUR**  
411-413 Liverpool Road  
London, N7 8PT  
Email: info@lightfollowsbehaviour.com

Project Description:  
7 The Grove  
Drawing Title:  
Lighting Layout - Landscape Lighting

Stage:  
04  
Purpose of Issue:  
For Information

Drawn by:  
LM

Original Sheet Size: A1	Layout scale: 1:100@A1
Job number: 2224	Drawing number: 2224-LA-001
	Rev: E

Copyright and design rights in this drawing are owned by Light Follows Behaviour. It is issued on condition that prior written permission be obtained for any copying thereof, and for any use beyond the previously agreed purpose or by other than the intended recipient. This drawing incorporates confidential information and is issued on condition that the recipient does not make it available, or disclose any information it contains, to any other party without prior written permission. Light Follows Behaviour has exercised reasonable skill and care in preparing this drawing, which is for the sole use and benefit of the intended recipient. No responsibility to any other party is accepted.