

KEY:

- SITE BOUNDARY
- EXISTING WALL
- PROPOSED WALL

MATERIALS LEGEND:

- EXISTING**
- 1 EXPOSED RED MULTI BRICK
  - 2 CLAY ROOF TILES
  - 3 RENDER FINISH
  - 4 TIMBER FRAME SASH WINDOWS
- PROPOSED**
- 5 EXPOSED RED MULTI BRICK
  - 6 DARK GREY METAL FRAMED WINDOWS
  - 7 DARK GREY METAL COPING
  - 8 ROOF WINDOW

Notes

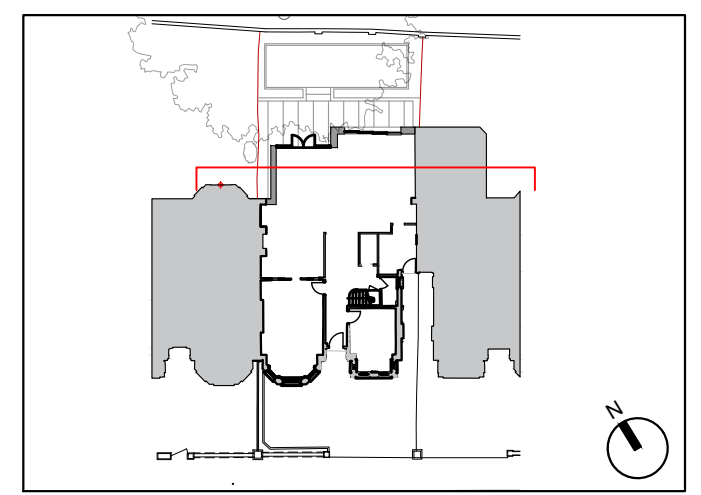
1. To be read in conjunction with:
  - a. MoreySmith information including, but not limited to, Specifications, Schedules, Design Reports, and Access strategy.
  - b. Design team information including, but not limited to, that produced by the: Structural Engineer, MEP Engineer, Fire Engineer (including fire strategy), Approved Inspector/Building Control Officer, Acoustic Engineer.
2. For scope of services and responsibilities please refer to project Roles and Responsibilities Matrix and Contractor Design Schedule.
3. Do not scale from drawing. Any discrepancy between this drawing, other drawings forming part of this contract, or the specification / bills of quantities must be clarified before commencement of any work or ordering of any materials. All dimensions, levels, and clearances to be checked on site prior to works commencing.
4. Any areas shown are for design purposes only and may vary as the design develops. For a definitive area measurement, please consult a RICS chartered surveyor.



PO2	06.11.23	UPDATED REAR EXTENSION FOR PLANNING	MK	PJ
PO1	07.07.23	FIRST ISSUE FOR PLANNING	MN	
Rev.	Date	Comment	By	Chkd

Revisions

Key Plan



Work Stage: FOR PLANNING

Status:

Project Title:  
 36 LAMBOLLE ROAD  
 BELSIZE PARK, LONDON  
 NW3 4HR

Drawing Title:  
 PROPOSED SECTION B

First Issued: 07.07.23 Scale: 1:50@A1

Drawing Number:  
 LR626-PL-10015

Drawn by:	Checked by:	Revision:
SF	PJ	PO2

**MoreySmith**  
 24 Marshalsea Road  
 London SE1 1HF  
 020 7089 1470  
 info@moreysmith.com  
 www.moreysmith.com

Do not scale from this drawing (except for planning purposes) All dimensions to be checked on site, any discrepancies must be reported to the Architect immediately.  
 © MoreySmith Ltd

